

Capitola Branch Library Character Rendering

Meeting Context

- The City, with Anderson Brulé Architects, held a Community Workshop on October 28, 2015.
- Workshop solicited input on desired character & experience of the future Capitola Branch Library.
- Key learning from workshop has been used to develop conceptual inspirational graphics.
- Graphics will communicate the Library's potential character and experience as next steps toward creating the new library are considered.

Meeting **Agenda**

- Summary of the Community Workshop
- Translation of Key Learning into Design Character
- Character Drawings for the Future Capitola Library

Example Road Map - Library Character

EXAMPLE
WORKSHOP
OUTCOME

1B

2

EXAMPLE
CHARACTER
SKETCHES



Architectural Character



EXAMPLE CHARACTER DRAWINGS

3



1A

EXAMPLE
COMMUNITY
WORKSHOP





Summary of the Community Workshop

Character

- Capitola Character
- Library Site Character

Building Design Elements

- Form
- Materials
- Scale/Massing

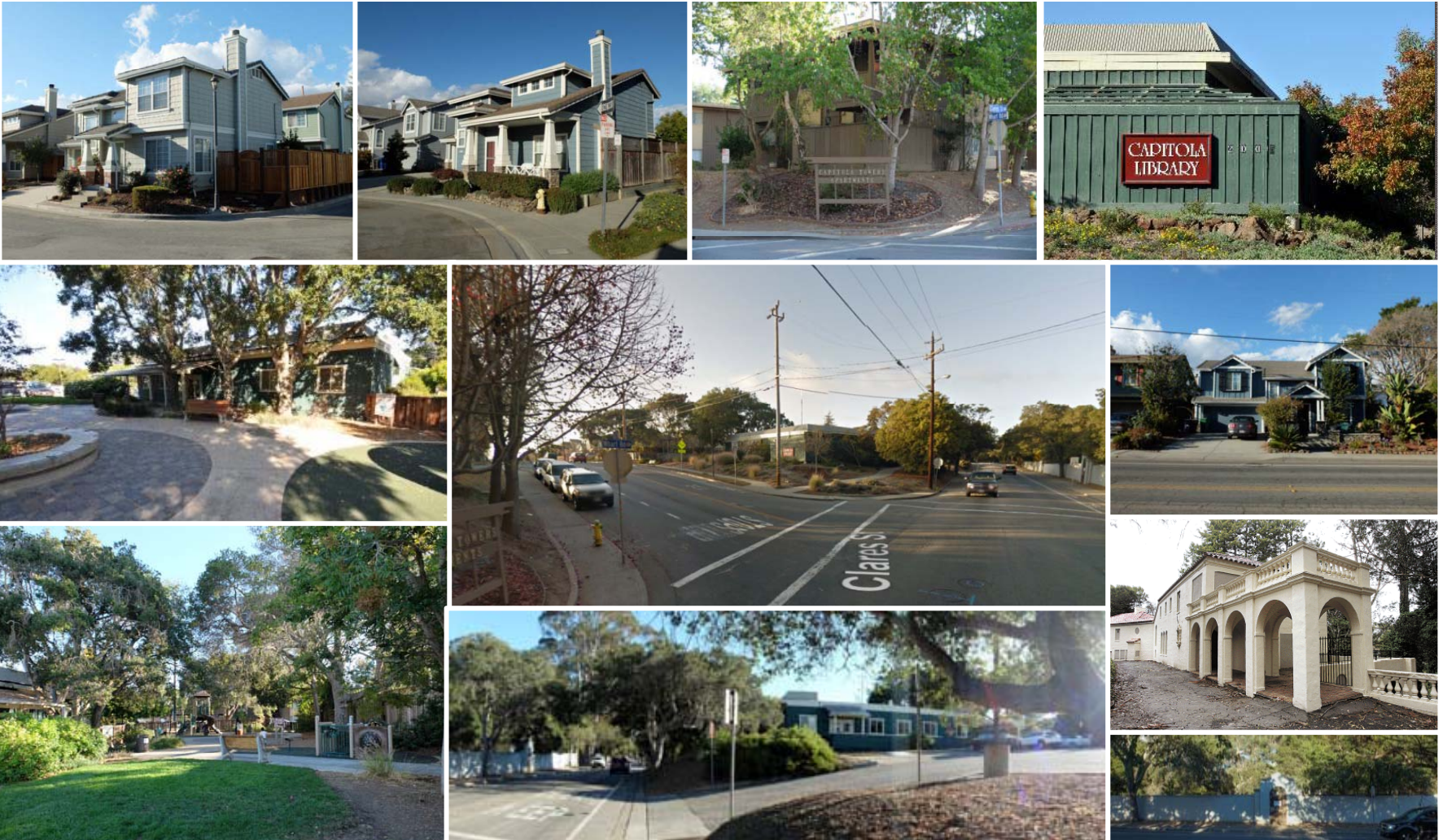
Character - Capitola

- What comes to mind when you think about the character of Capitola?



Character – Library Site

- What comes to mind when you think about the character of the site?



Character - Capitola & Library Site

- *What comes to mind when you think about the **character** of Capitola?*

- Gardens / Greenspace
- Unique, quaint/small, seaside City
- Stucco
- Outdoor Living
- Active people – connection
- Natural beauty
- Community Minded
- Unique Neighborhoods
- Busy/Tourist focus
- Human Scale – not out of scale with people and the community
- Eclectic Architecture

- *What comes to mind when you think about the **character** of the Library Site?*

- Oasis – quieter refuge
- Oak Trees
- Natural Woods
- Shady and rustic
- Creekside
- Natural flow from Soquel into Capitola – backdoor (family door) to Capitola
- Take cues from Rispin Mansion
- Take cues from Tot Lot park
- Potential Gateway into Capitola
- Multi Level terrain and open space
- Butterfly Habitat/Riparian Corridor

Building Design Elements

Defining Form



Building Design Elements

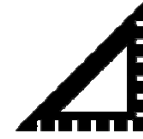


Defining Materials



Building Design Elements

Defining Scale/Massing



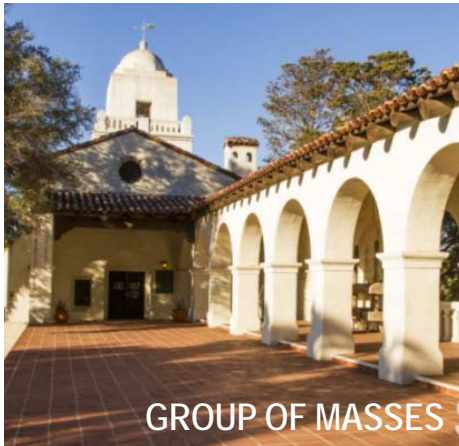
SINGLE MASS



SHORTER SCALE



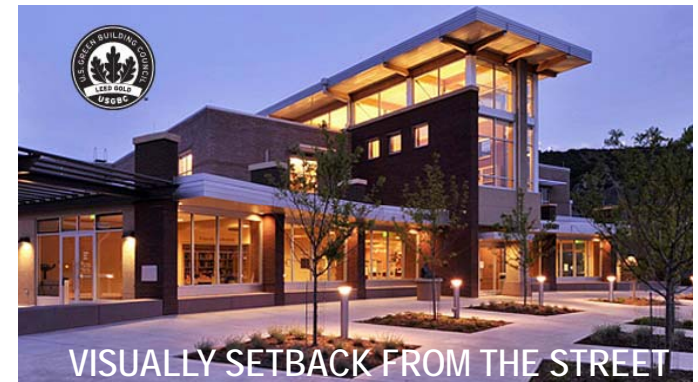
VISUALLY CLOSE TO THE STREET



GROUP OF MASSES



TALLER SCALE



VISUALLY SETBACK FROM THE STREET

Building Design Elements

Image Dot Exercise

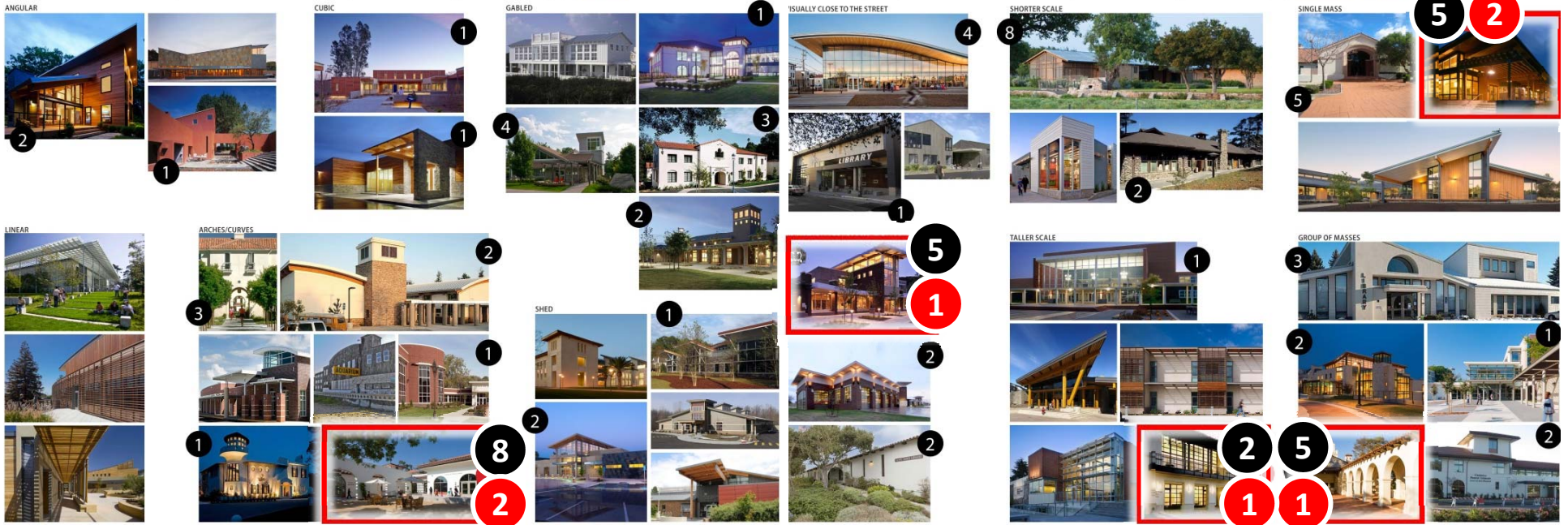
EXHIBIT C

Capitola Branch Library Community Workshop | MATERIALS



EXHIBIT C

Capitola Branch Library Community Workshop | FORM



Building Design Elements

Team Discussions

TEAM 1

- Glass in combination with stone or wood
 - Pure glass is too sterile
 - Glass invites in - visual connection of indoor/ outdoor
- Wood: connection to oaks/creek - natural & warm
- Longevity of metal is liked, not necessarily the aesthetic
- Mixed Materials - stucco (tie to Rispin)/ wood (natural connection to site)/ glass
- Rustic wood - warmer wood is preferred
- Don't like the single box
 - Low and broken up masses
- Warmth of wood and glass
- Stone relates to Rispin & natural materials of site
- Different elements that blend into outdoor space
- Lot requires visual closeness to street
- No big mass - shorter scale / broken up masses*
 - But still have a strong visual
- Transitional Style
- Desire views and connection to outdoors, possibly through a second floor community room with roof patio.
 - Santa Cruz Community Foundation building in Aptos was mentioned as an example

TEAM 2

- Like the stone – fits into nature, compliments the site
- Two-story, lots of glass, stucco, outdoor balcony, like that it ties into Rispin
- Attracted to Spanish style, arched windows,
 - Plaza, group of masses
 - Shade
- Generally chose images with lots of glass
- Shed roof, glass – drama of it
- Single story with a grouping of mass
- Consider pedestrian bridge over Wharf Road to Rispin Park
- Beachy weather look – but concerned about maintenance
- Enclosed corner w/glass reading room
 - Quaint
- Two-story, see Rispin & Mountains visual, connection to outdoors

TEAM 3

- Wood
 - Weathered wood-like color
- Lot of greenery
- 1-1.5-story structure
- Clerestory windows
 - (high) lots of light
- Stucco
 - Economics: will last longer
 - Articulating Rispin
 - Looks more like a civic building
 - More permanence
- General
 - Lower profile and height adjacent to residences
 - Transition single story
 - Closer to street
 - Transition up to back (higher)
 - Mixture of materials
 - Bring scale down
 - Interior patio
 - Sidewalks
 - Safe passenger lanes
 - Could be closer to street depending on size and height
 - Consider shading of oaks
 - Lots of natural light
 - Carefully used, no direct sunlight

TEAM 4

- Single Mass
 - Wide open, easy to access, welcoming
 - Good outdoor space
 - Convenient for shelving
- Group of masses
 - Really good outside space, contemplative
 - Reminiscent of the Missions
- Tall/Short Scale
 - Medium scale preferred
- Visually setback
 - Space for small community garden
- Visually close to street
 - Curving, flowing roof, easy access
- Arches/curves
 - Curves, stucco, intimate, arches
 - Fun, futuristic, "Rispin-like"
- Angular
 - Freeform, strong, clean, contemporary
- Gabled
 - Welcoming, light, Rispin-like
- Wood
 - Family-friendly, benches
 - Appeal to different ages, rustic
- Glass
 - Natural light
- Stucco
 - Welcoming, tile, seems to fit Capitola door/ profile
- Stone
 - Looks natural
 - "I like that feel"

Building Design

Emerging Thoughts

1 RISPIN LIKE



2 RECALL NATURAL SITE ELEMENTS



Character and Building Design

Key Insights

- Connected to site and history (draw from natural elements of the site)
- Interested in connecting it to the Rispin Mansion in someway– possibly through use of stucco and stone
- Open plan, with broken up exterior masses
- Multiple materials
- Indoor outdoor connection, reading alcoves
- Natural Light – careful use
- Light within the Library to be carefully managed to not spill out and disturb surrounding neighbors
- Shorter scale/broken up masses but still a strong visual

Building Design Elements

Summary of Key Learning

- Form

- Simple forms broken down
- Timeless and contextual
- Articulates Library use and invites people in
- Responsive to site context/environment
 - Riparian corridor, butterfly habitat, playground, existing trees (oaks/redwoods)

- Materiality

- Natural materials (stone, wood, glass)
- Stucco as a contextual material that relates to the Rispin
- Durability and sustainability

- Scale/Massing

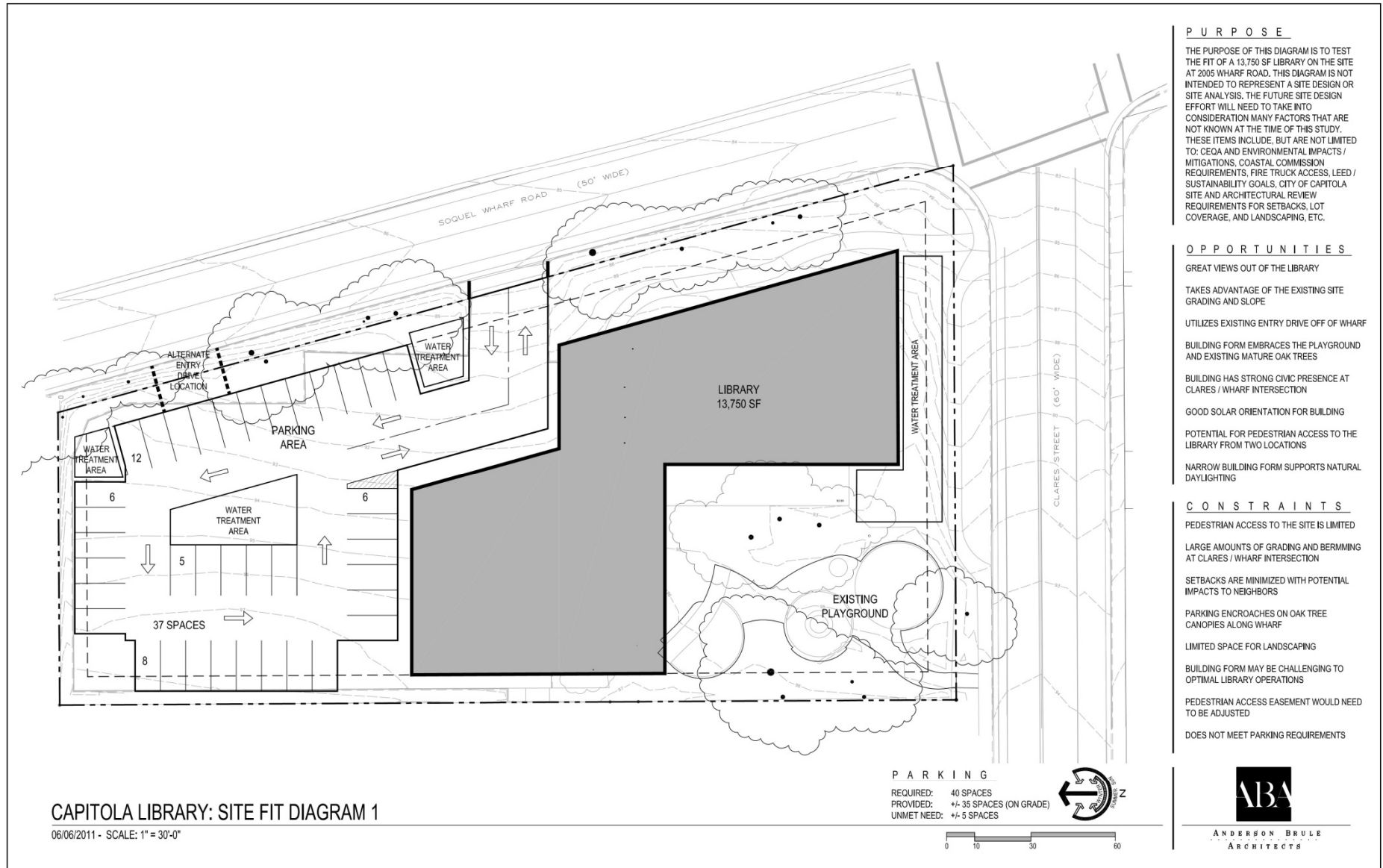
- Medium scale with some prominence/presence
- Grouping and breaking down of masses
- Indoor/outdoor connections
- Taller element that provides visual connection to surroundings



Translation of Learning into Design Character

- Character
- Form
- Materials
- Scale/Massing

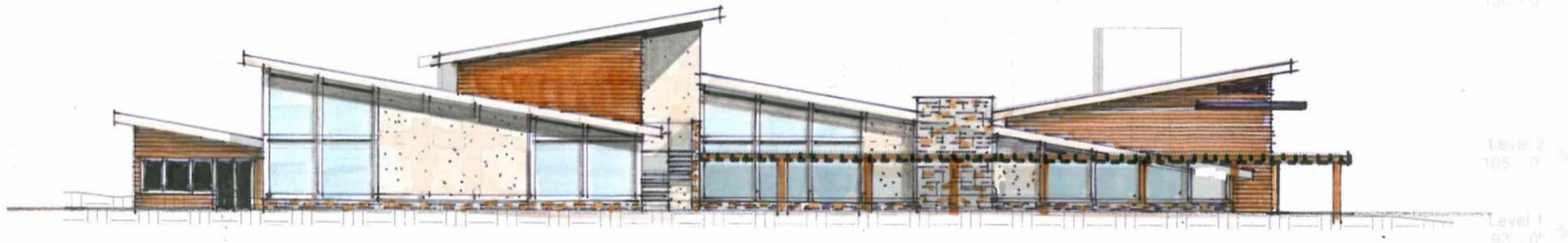
Character - Exploration



Character - Exploration



Character - Exploration



CONCEPTUAL WEST ELEVATION

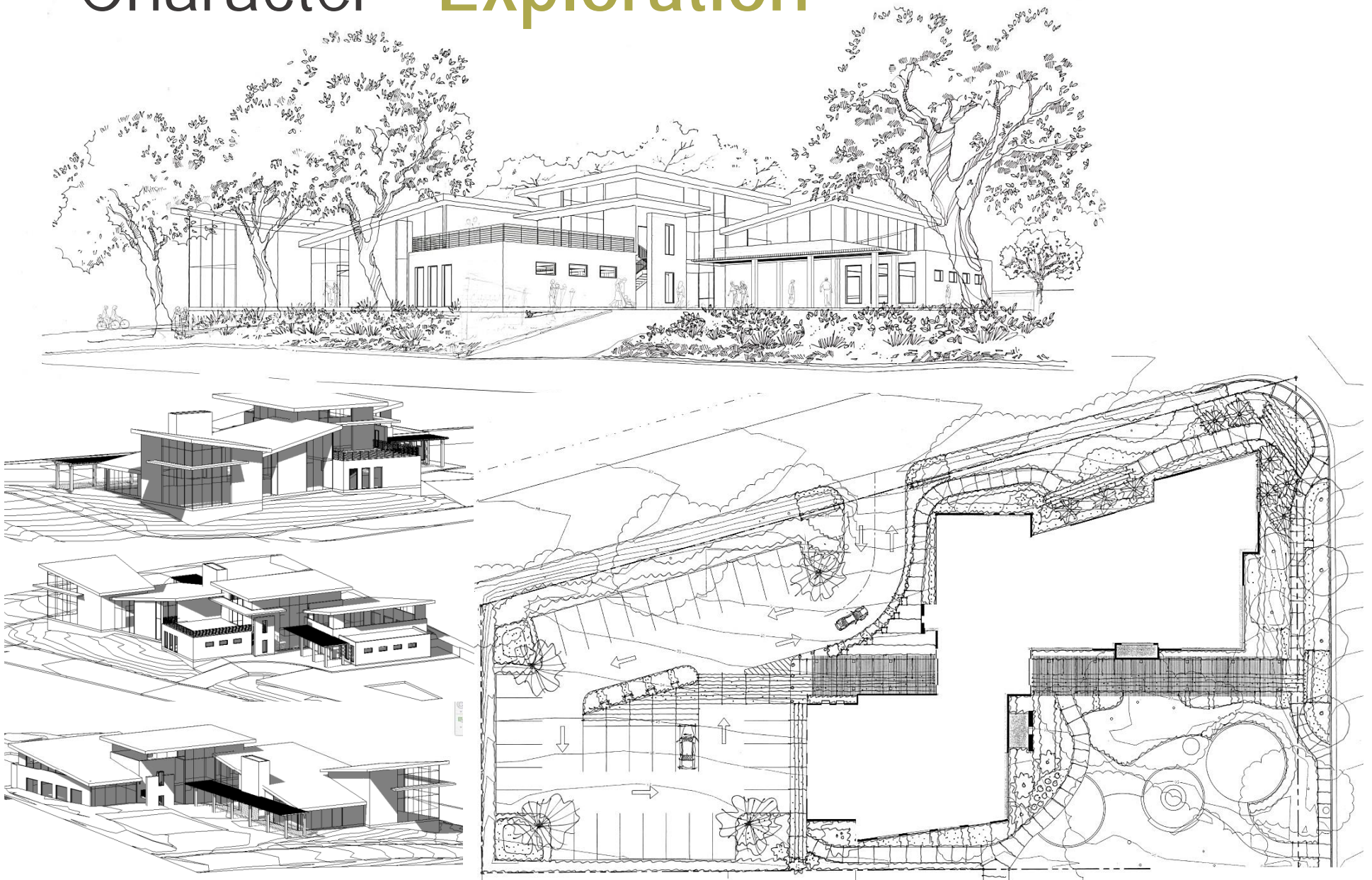


CONCEPTUAL VIEW FROM WHARF ROAD



CONCEPTUAL VIEW FROM CLARES STREET

Character - Exploration





Character Drawings – Future Capitola Library

Conceptual Site Plan

Conceptual Perspective View





Thank You