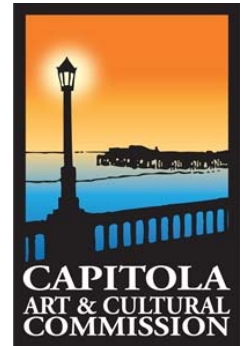


City of Capitola

Art & Cultural Commission

Tuesday, November 18, 2025 – 6:30 PM

Community Room
420 Capitola Avenue, Capitola CA 95010



Chair: Mary Beth Cahalen

Vice Chair: Roy Johnson

Commissioners: Karin Anderson, Courtney Christiansen, Joe Clarke, Enrique Dolmo Jr., Roy Holmberg, Jill Lengre, Esther Sylvan.

Staff Representatives: Nikki Bryant

-
1. **Call to Order**
 2. **Additional Materials**
 3. **Public Oral Communication:** *Public Oral Communication allows members of the public to address the Commission on any Program Report or topics within the purview of the Commission not on the General Business agenda.*
 4. **Commissioner Comments**
 5. **Staff Comments**
 6. **Approval of Minutes- Regular Meeting October 14, 2025.**
 7. **Program/Committee Reports:** *All items in program and committee reports are staff or committee updates. Public Communication for these items is to be addressed during Public Oral Communication.*
 8. **General Business:** *All items listed in General Business are intended to provide an opportunity for public discussion. The following procedure pertains to each General Business item 1) Staff explanation; 2) Commission Questions; 3) Public Comment; 4) Commission deliberation; 5) Decision.*
 - a. **Monterey Ave Railing Project Feedback:** *Receive staff report and provide feedback to the artist for completion of installation.*
 - b. **City Special Event Feedback:** *Provide feedback to the Chief of Police regarding the reoccurring Special Event held in the City of Capitola.*
 - c. **Rispin Reflecting Pool Public Art Project:** *Review and provide final feedback for the Rispin Reflecting Pool Public Art Call to Artist.*
 9. **Adjournment:** *to the next regular Art & Cultural Commission meeting on December 9, 2025*

Agenda and agenda Packet Materials: The Art and Cultural Commission Agenda is available on the City's website: www.cityofcapitola.org on Friday prior to the Tuesday meeting. If you need additional information, please contact the City Hall Department at (831) 475-7300

American with Disabilities Act: Disability-related aids or services are available to enable persons with a disability to participate in this meeting consistent with the Federal Americans with Disabilities Act of 1990. Assisted listening devices are available for individual with hearing impairments at the meeting in the City Council Chambers. Should you require special accommodation to participate in the meeting due to a disability, please contact the City Clerk's office at least 24-hours in advance of the meeting at (831) 475-7300. In an effort to accommodate individuals with environmental sensitivities, attendees are requested to refrain from wearing perfumes and other scented products.

Appeals: Any person who believes that a final action of this advisory body has been taken in error may appeal that decision to the City Council. Appeals must be in writing and delivered to the City Clerk's Office within ten (10) working days from the time of the board's decision. The notice of appeal shall set forth appellant's name, phone number, address to which notices may be sent to the appellant, and the grounds upon which the appeal is made.

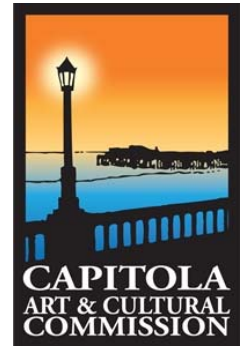
City of Capitola

Art & Cultural Commission: Draft Minutes

Tuesday, October 14, 2025 – 6:30 PM

Council Chambers

420 Capitola Avenue, Capitola CA 95010



Chair: Mary Beth Cahalen

Vice Chair: Roy Johnson

Commissioners: Karin Anderson, Courtney Christiansen, Mayor Joe Clarke, Enrique Dolmo Jr., Roy Holmberg, Jill Lengre, Esther Sylvan

Staff Representatives: Nikki Bryant

1. **Call to Order:**

The meeting was called to order at 6:31 PM. In attendance: Anderson, Christinsen (6:35), Clarke, Dolmo (6:34), Holmberg, Johnson, Lengre, Sylvan. Absent: Cahalen

2. **Additional Materials**

None

3. **Public Oral Communication**

Goren Klovich

4. **Commissioner Comments**

Joe comment on event of season

5. **Staff Comments**

Procedure for staff to respond to emails from the public related to Public Art

6. **Approval of Minutes- September 9, 2025**

Motion to approve the Minutes: Vice Chair Johnson

Second: Commissioner Holmberg

Voting Yea: Commissioner Anderson, Commissioner Christinsen, Mayor Clarke, Commissioner Dolmo, Commissioner Holmberg, Vice Chair Johnson, Vice Chair Johnson, Commissioner Lengre, Commissioner Sylvan

7. **Program/Committee Reports**

Commissioner Anderson and Commissioner Lengre met with staff for event preparation. There will be recognition of previous event planners at the Shadowbrook for the 10th anniversary.

General Business

a. Begonia Festival Commemorative Public Art Project

Report given by Staff. Commissioner Holmberg commented on UV coating. Vice Chair Johnson commented on conversations he had with the artist. Commissioner Lengre commented on the timing. Mayor Clarke commented on better communication with the artist. Commissioner Dolmo commented on the maintenance process for Public Art.

Public Comment: None

Motion to approve the artist process to correct the color fade and staff reach out and request better communication regarding the sculpture: Mayor Clarke

Second: Commissioner Christinsen

Voting Yea: Commissioner Anderson, Commissioner Christinsen, Mayor Clarke, Commissioner Dolmo, Commissioner Holmberg, Vice Chair Johnson, Commissioner Lengre, Commissioner Sylvan.

b. Park at Rispin Mansion Public Art

Report given by Staff. Mayor Clarke commented the reflecting pool as priority and consider the retaining wall later. Commissioner Sylvan commented on grant and suggested transparency in the Call to Artist regarding the budget recommendation. Commissioner Lengre commented on placing a sign in the reflecting pool noticing it as a future public art project. The Commission agreed to continue the mural discussion to a later meeting.

Public Comment: None

Motion to approve the development of a Call to Artist for the reflecting pool with mosaic concept and recommend City Council approve a \$50,000 artist contract budget from the Public Art Fund: Commissioner Lengre

Second: Commissioner Anderson

Voting Yea: Commissioner Anderson, Commissioner Christinsen, Mayor Clarke, Commissioner Dolmo, Commissioner Holmberg, Vice Chair Johnson, Commissioner Lengre, Commissioner Sylvan.

c. November Art & Cultural Commission Meeting

Report given by Staff.

Public Comment: None

Motion to approve adjusting the Art & Cultural regular November meeting to November 18, 2025: Vice Chair Johnson

Second: Mayor Clarke

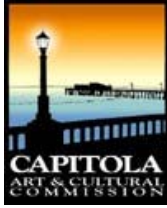
Voting Yea: Commissioner Anderson, Commissioner Christinsen, Mayor Clarke, Commissioner Dolmo, Commissioner Holmberg, Vice Chair Johnson, Commissioner Lengre, Commissioner Sylvan.

8. Adjournment

The meeting was adjourned at 7:38 PM to the next regular Art & Cultural Commission meeting on November 18, 2025.

ATTEST:

Nikki Bryant



Item #: 8.a

ART & CULTURAL COMMISSION AGENDA REPORT

MEETING OF November 18, 2025

FROM: Staff
DATE: November 10, 2025
SUBJECT: Monterey Ave Railing Project Feedback

Recommended Action:

Receive staff report and provide feedback to the artist for completion of installation.

BACKGROUND

The Monterey Avenue Railing Public Art Project was approved by the Art & Cultural Commission prior to March 2020 and delayed due to the COVID-19 pandemic. Following a competitive Call to Artists and a multi-phase review process, Bruce Harman was selected as the project artist. His proposal features hand-painted marine life silhouettes made from aluminum, mounted onto the railing using custom brackets with tamper-proof bolts, without altering the railing itself.

On October 24, 2024, the Capitola City Council approved the project with direction to begin installation with elements focused on birds and to conduct additional public outreach and review before proceeding with full implementation.

DISCUSSION

Bruce Harman began installation of the first phase of the public art project prior to the June 10, 2025, Commission meeting. The first phase includes a representative sample of the proposed marine and bird-themed artwork to demonstrate scale, placement, color palette, and mounting technique.

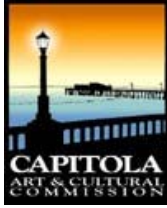
The artist presented on August 12, 2025, and received feedback on the pelican portion of the project insulation. The artist was directed to continue with the installation and begin to add the aquatic life portion of the proposal. The installation will be available for in-person viewing by Commissioners and the public along the west side of Monterey Avenue. Feedback given during this meeting will be incorporated in the final installation phase.

FISCAL IMPACT

No additional fiscal impact. The project remains within the approved \$50,000 budget from the Public Art Fund.

ATTACHMENT

Report Prepared By: Nikki Bryant
Community Services and Recreation Director



ART & CULTURAL COMMISSION AGENDA REPORT

MEETING OF November 18, 2025

FROM: Staff
DATE: October 1, 2025
SUBJECT: 2025 Special Event Recap

Recommended Action Provide feedback to the Chief Police regarding the reoccurring Special Events held in the City of Capitola.

BACKGROUND

Special events are divided into two categories: major special events and minor special events. Major special events are those with more than 200 attendees or notable impacts on City services or a neighborhood. Minor special events are activities with fewer than 200 people and limited impacts. Minor special events can be approved by the City Manager, while all applications for new major special events must be presented to the City Council for review and consideration.

If there are no significant modifications and there are no major problems with the event, recurring special events may be approved by the City Manager for the upcoming calendar year. The City Council has the discretion to request a review of a recurring special event if there is an identifiable concern related to past events.

The purpose of this report is to review the 2025 special events, identify any issues, and determine if any additional review should be required for recurring events in 2026. If no issues are identified for an event, and the event organizer proposes no significant changes, staff will issue permits for the recurring special events in 2026.

DISCUSSION

Provide productive feedback from your perspective that can be used to improve our engagement with special events in 2026.

Planned Public 2026 Major Special Events

- Surfer's Path 5K/10K
- Surfer's Path Half Marathon
- Capitola Custom Classic Car Show
- Wharf to Wharf Race
- Capitola 5K/10K
- Capitola Art & Wine Festival
- Capitola Beach Festival
- Mermaid Triathlon & Duathlon
- Monte Fireworks Extravaganza
- Women on Waves Surf Contest

Planned Public 2026 Minor Special Events

- Operation Surf
- Good Friday Paddle Out
- Veteran Surf Alliance Learn to Surf (5)
- Village Sip & Stroll #2
- 5K Walk for Angelman's Syndrome
- Fill the Boot for MDA
- Village Sip & Stroll #1
- Strawberry Fields Forever Ride
- Veteran Surf Alliance Paddle Out
- AIDS/Lifecyle Bicycle Ride
- California Coast Classic
- Halloween Parade
- Village Sip & Stroll #3
- Surfing Santa
- Open Water Swim Festival

City Organized Special Events

- Twilight Concerts (12)
- Food Truck Fridays (4)
- Makers Market (4)
- Plein Air
- First Responder's Surf Contest
- Movies at the Beach (2)
- Boogie on the Wharf (3)
- New Music Sundays (2)
- Dueling Pianos (2)
- National Night Out

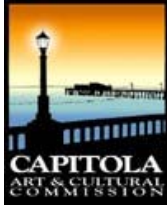
FISCAL IMPACT

None

ATTACHMENT

None

Report Prepared By: Sarah A. Ryan
Chief of Police



ART & CULTURAL COMMISSION AGENDA REPORT

MEETING OF November 18, 2025

FROM: Staff
DATE: November 10, 2025
SUBJECT: Rispin Reflecting Pool Public Art

RECCOMENDED ACTION Review and provide feedback on the Rispin Reflecting Pool Public Art Call to Artist.

BACKGROUND

The City of Capitola initiated plans for a park at the historic Rispin Mansion site in 2014. Extensive community outreach and collaboration helped shape the project vision. A public bid opening held on February 22, 2023, resulted in no bids, as contractors indicated that the project's budget was insufficient for the proposed scope. In response, and in accordance with public contract code, staff worked with local contractor Betz Works to revise the scope to fit the available budget.

One element of the original design that remained unfunded was the Mosaic Reflecting Pool, on the site's historic fountain. To support this component, the Public Works Director applied to the National Endowment for the Arts (NEA) FY26 Grants for Arts Projects (GAP) program. The NEA grant requires a 1:1 match, and the Art & Cultural Commission initially recommended allocating \$25,000 from the Public Art Fund toward this match.

On November 13, 2025, the City Council approved an additional \$25,000 allocation from the Public Art Fund, bringing the total City commitment to \$50,000 for the project. The project budget could increase to \$125,000 if the City is awarded the NEA grant. Staff anticipate receiving the grant results in December 2025. In the meantime, the reflecting pool remains temporarily filled for public safety.

DISCUSSION

With City Council approval of the budget, the next step is to advance the Call to Artist for the Rispin Reflecting Pool Project. The project will transform the 800-square-foot historic fountain into an artist-designed mosaic that reflects Capitola's heritage, natural environment, and community identity. The Call to Artist outlines funding at two levels; \$50,000 and \$125,000, depending on the outcome of the NEA grant award. Artists are encouraged to submit two proposals allowing flexibility in design and material selection.

FISCAL IMPACT The Public Art Fund has a current balance of \$125,200 with an estimated \$85,000 committed to current projects, which includes \$50,000 reserved for this project.

ATTACHMENT

1. Draft Call to Artist

Report Prepared By: Nikki Bryant
Director of Community Services & Recreation

CITY OF CAPITOLA – CALL TO ARTIST

Rispin Mansion Reflecting Pool Mosaic Project

Issued by: City of Capitola, Community Services & Recreation Department

Deadline: *To be determined upon Council approval*

PROJECT OVERVIEW

On behalf of the City of Capitola, the Art & Cultural Commission, invites professional artists or artist teams to submit qualifications for the design, fabrication, and installation of a mosaic artwork within the historic reflecting pool at Rispin Mansion Park.

This public art project will transform the existing 800-square-foot fountain basin into a permanent, artist-designed mosaic that reflects Capitola's cultural heritage, natural beauty, and sense of community. The project seeks to honor the site's historic significance while creating an engaging visual centerpiece for visitors.

The City will award one contract for design, fabrication, and installation services.

BACKGROUND

The Rispin Mansion is one of Capitola's most significant historical landmarks. Constructed in 1922 by San Francisco businessman Henry Allen Rispin, the Mediterranean-style estate originally served as a private residence overlooking Soquel Creek and the Village below. Over the decades, the property transitioned through multiple owners and fell into disrepair before the City of Capitola purchased it in 1986. The surrounding site has since been restored through a multi-year effort to create The Park at Rispin Mansion, envisioned as a public gathering space that celebrates Capitola's history, environment, and community spirit.

In 2022, the City Council approved plans and specifications for park improvements, including pathways, native landscaping, and event areas. A key feature of the original design, a Public Art Mosaic Reflecting Pool within the mansion's historic fountain. The proposed project will transform the existing 800-square-foot fountain into a vibrant mosaic centerpiece that reflects the natural beauty and cultural heritage of Capitola.

The City has applied for grant funding and if awarded, additional funding will expand the scope of the project, including community workshops, interpretive signage, and accessibility improvements. The Call to Artist reflects this potential range in funding, and artists are encouraged to submit two (2) proposals that can be scaled appropriately depending on the final project budget.

PROJECT GOALS

The selected artist or artist team will design, fabricate, and oversee the installation of a durable, site-specific mosaic within the historic Rispin Mansion reflecting pool. The artwork should honor the site's history, its natural setting along Soquel Creek, and Capitola's cultural identity as a coastal community. The City seeks a mosaic artwork that:

- Enhances the historic fountain structure and complements its architectural features.
- Reflects Capitola's cultural and environmental identity.
- Incorporates high-quality, durable materials suitable for long-term outdoor installation in a coastal environment.
- Invites community pride and participation in the creative process.
- Meets all structural, maintenance, and safety standards established by the City.

SITE DESCRIPTION

The Rispin Mansion property is located at 2200 Wharf Road, Capitola, CA. The reflecting pool is situated near the upper terrace of the park, visible from multiple vantage points. The existing concrete basin measures approximately 800 square feet and approximately 3 feet deep.

The reflecting pool is intended to be dry element in the park and with installation of the public art mosaic will be brought to a depth of eighteen (18) inches. Proposals for the Expanded Budget could include a central raised element that may be integrated into the design that should be under four (4) feet in height and under four hundred (400) pounds.

BUDGET

The total available budget for the project will either be \$50,000 or \$125,000, depending on the outcome of the NEA grant application.

- Base Budget: \$50,000 (funded through the Public Art Fund)
- Expanded Budget (if NEA grant awarded): \$125,000 total

The total budget must cover all costs associated with the project, including but not limited to: artist design fees, materials, fabrication, transportation, insurance, installation, documentation, and travel. The City will provide project management support and coordinate installation logistics with Public Works staff.

ELIGIBILITY

This opportunity is open to professional artists and artist teams residing in the United States. Artists must demonstrate experience designing, fabricating, and installing exterior public art works of comparable scale and budget. Artists based in California or the greater Central Coast region are strongly encouraged to apply.

ARTIST SELECTION PROCESS

A Selection Panel composed of representatives from the Art & Cultural Commission, City staff, and community stakeholders will review submissions. The process will include:

1. Review of artist qualifications and past work.
2. Selection of up to three finalists to prepare detailed design proposals.
3. Final interviews and selection of one artist or team.

Finalists will receive a modest stipend of \$XXX for design proposal development if requested to present before the selection panel.

PROPOSAL REQUIREMENTS

Interested artists shall submit the following materials:

- **Letter of Interest** (1–2 pages) describing concept, artistic approach, relevant experience, and connection to the project goals.
- **Professional Resume or CV** (for each team member, if applicable).
- **Portfolio of Work** (minimum of 5, maximum of 10 images of completed projects).
- **References** (minimum of two, maximum of three).

All materials must be submitted electronically in PDF format.

PROJECT TIMELINE

Milestone	Estimated Date
Call to Artist Released	December 1, 2025
Qualifications Due	February 1, 2026
Finalists Selected	February 10, 2026

Milestone	Estimated Date
Final Proposals Presented	March 10, 2026
Artist Selected / Contract Executed	April 23, 2026
Fabrication & Installation	Summer 2026
Dedication Event	Fall 2026

SELECTION CRITERIA

Submissions will be evaluated on the following criteria:

- Artistic excellence and originality.
 - Demonstrated experience with mosaic or large-scale public art.
 - Ability to complete projects on time and within budget.
 - Understanding of Capitola's character, history, and environment.
 - Strength of references and community engagement experience.
-

SUBMISSION INSTRUCTIONS

All materials must be submitted electronically to:

City of Capitola – Community Services & Recreation Department

Email: nbryant@ci.capitola.ca.us

Subject Line: *Rispin Mansion Reflecting Pool Mosaic – Call to Artist*

Incomplete or late submissions will not be considered.

Appendices included:

- **Appendix 1 – Photos of Reflecting Pool (site)**
 - **Appendix 2 – Location Map**
-

CONTACT INFORMATION

For questions or additional information, contact:

Nikki Bryant

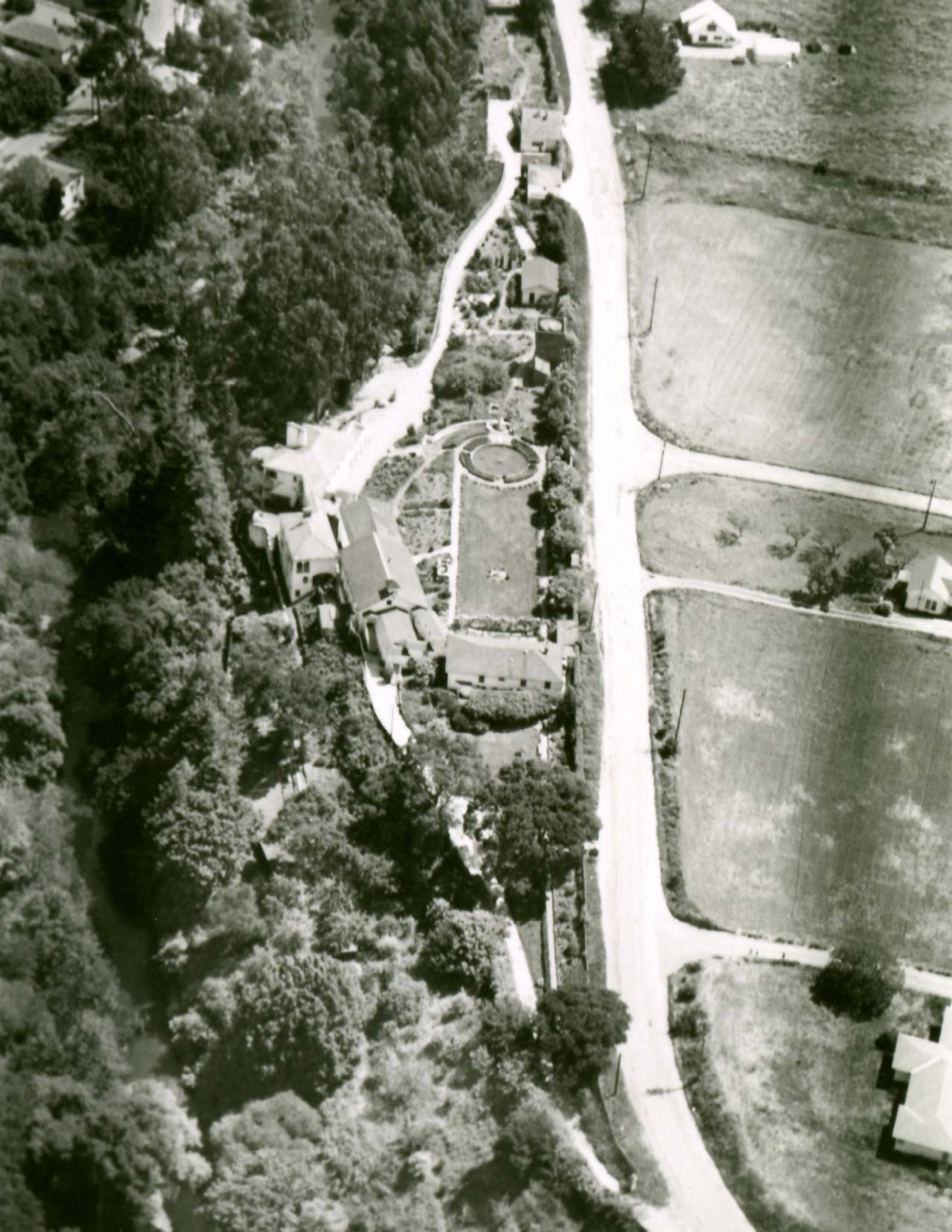
Director of Community Services & Recreation

City of Capitola

nbryant@ci.capitola.ca.us | (831) 475-7300







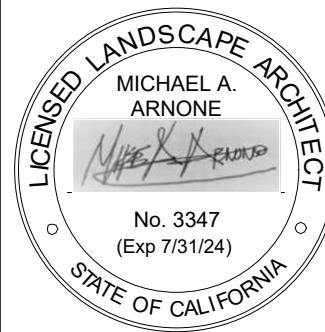
THE PARK AT RISPIN MANSION
Wharf Road and Clares Street
Capitola, California

© Michael Arnone Landscape Architect - 2023

THESE DRAWINGS ARE INSTRUMENTS OF SERVICE ISSUED FOR ONE TIME SINGLE USE BY THE OWNER. THE ENTIRE CONTENTS OF THESE DRAWINGS IS COPYRIGHT © MICHAEL ARNONE LANDSCAPE ARCHITECT. LANDSCAPE ARCHITECT RETAINS ALL RIGHTS AND TITLE. NO PART MAY BE REPRODUCED IN ANY MANNER OR MEDIUM WITHOUT THE EXPRESS WRITTEN APPROVAL OF THE LANDSCAPE ARCHITECT. THE PROPER ELECTRONIC TRANSFER OF DATA SHALL BE THE USER'S RESPONSIBILITY WITHOUT LIABILITY TO THE LANDSCAPE ARCHITECT.

OWNER SHALL ASSUME RESPONSIBILITY FOR COMPLIANCE WITH ALL EASEMENTS, SETBACK REQUIREMENTS AND PROPERTY LINES. OWNER SHALL ACQUIRE ALL NECESSARY PERMITS REQUIRED TO PERFORM WORK SHOWN ON PLANS. BASE INFORMATION HAS BEEN PROVIDED BY THE OWNER. MICHAEL ARNONE LANDSCAPE ARCHITECTURE ASSUMES NO LIABILITY FOR THE ACCURACY OF SAID PROPERTY LINE BOUNDARIES, FENCE LINES OR PROPERTY CORNERS.

REVISIONS



SITE PLAN &
PHASING PLAN

JOB NO. 201503

SCALE 1/16" = 1' - 0"

DRAWN MA

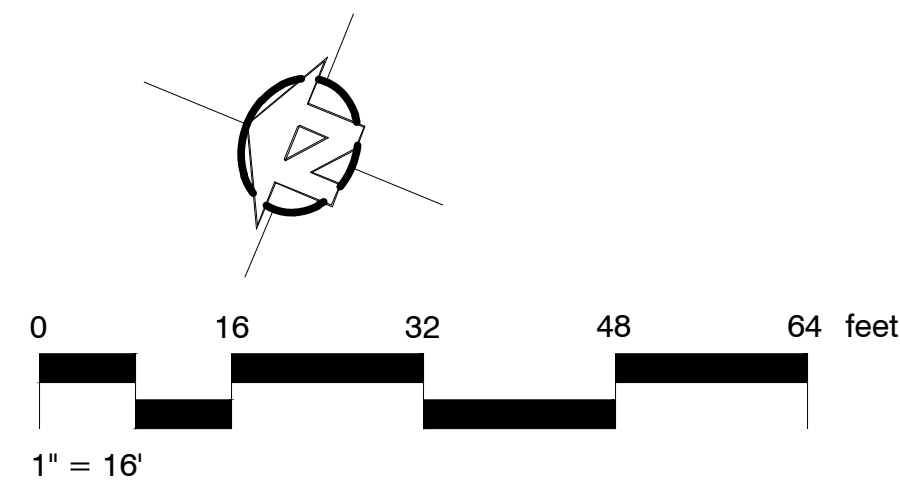
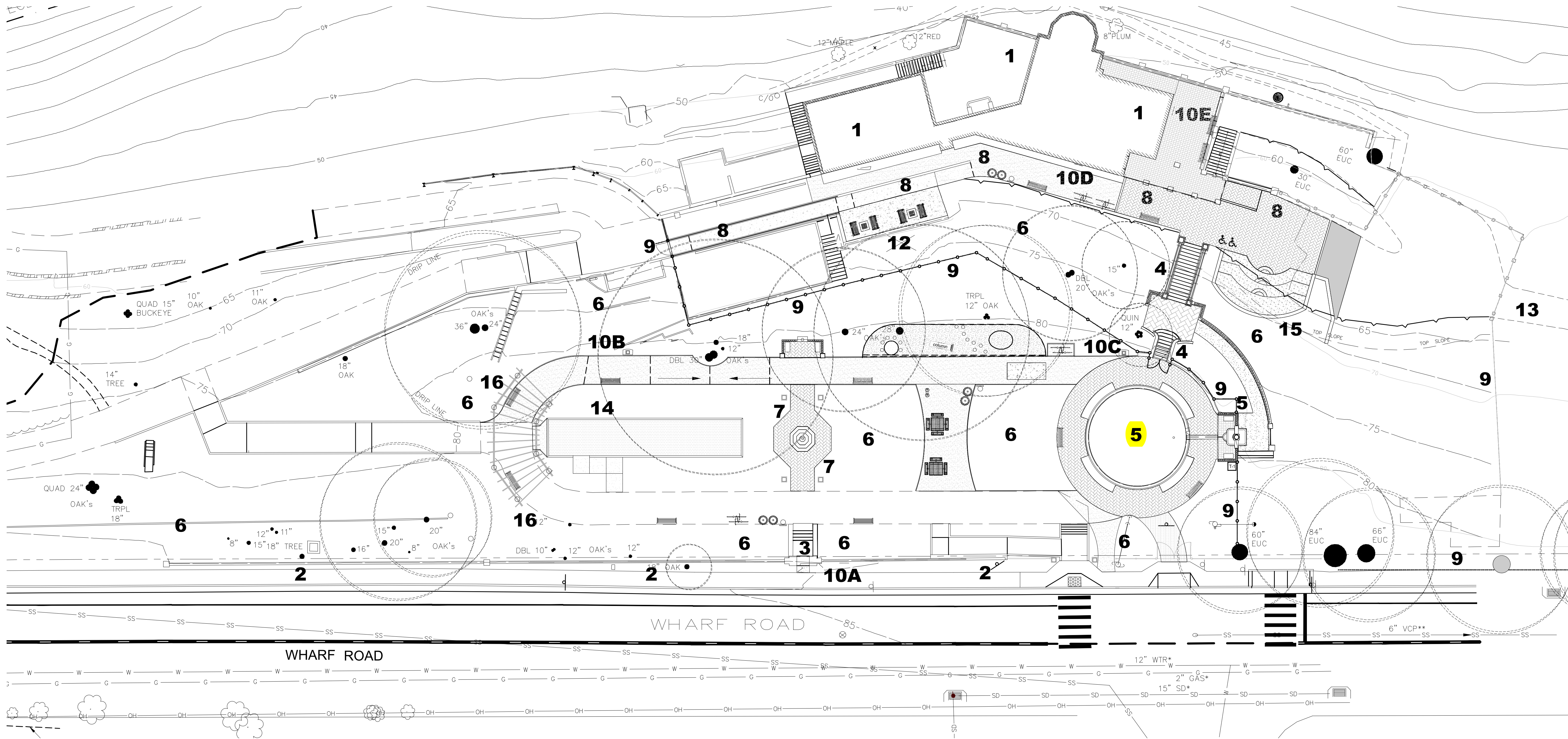
CHECK JC/MA

DATE 2.22.2023

SHEET

L- 1.0

SHEET 2 OF 20



EXISTING FEATURES AND PROPOSED AMENITIES

(N) denotes new element
(H) denotes existing element found on site

1. RISPIN MANSION BUILDING (H)
2. WHARF ROAD WALL (H)
3. WHARF ROAD ENTRY STEPS (H)
4. GRAND STAIRCASE AND BALUSTRADE (H)
5. FOUNTAIN AND REFLECTION POOL (H)
6. PLANTS AND LANDSCAPE (N)
7. SUNDIAL (H) AND SCULPTURE GARDEN (N)
8. UNIVERSAL ACCESS PATH OF TRAVEL (N)
9. FENCING AND GATES (N)
10. SIGNAGE (N)
11. IMPROVE STRIPING AND CROSSWALKS AT CLARES/WHARF ROAD INTERSECTION (N)
12. MURAL ON CONCRETE WALL OF SAINT CLARES BUILDING (N)
13. INFORMAL SERVICE DRIVE/PEDESTRIAN PATH FROM MANSION TERRACE TO SOUTH ENTRANCE AT WHARF ROAD (H)
14. BOCCIE BALL COURT (N)
15. AMPHITHEATER (N)
16. ARBOR (H)

Summary of Historic Elements found on Rispin Site and Proposed Renovations

Discussion of Intent.

The project goals for Rispin Park are to create a community park that provides passive recreation and focuses on the cultural, historical, and open space resources that are unique to the Rispin Mansion Site. The intent of the restoration is to provide examples of the architectural style of the mansion and to create a public awareness of the significance of the Mansion building and grounds as part of the history of the City of Capitola. It should be stated that the park is not intended to be an exact replication of the mansion grounds during the time it was the residence of Henry Rispin. A summary of the existing historic elements and the proposed modifications are explained below and noted on the Site Plan.

Wharf Road Wall, Entry Arch and Entry Staircase:

- Portions of the Existing wall along Wharf Road will remain unchanged, while some sections of the existing wall height will be reduced to 30' with a 30" decorative metal fence on top. One portion of the wall at the southern end of the road frontage will be removed to allow a new universally accessible entrance to the park. The section to be removed will incorporate a new column to match the existing last column at the southern terminus of the wall. Bollards and metal fencing will be added to the new park entrance.
- Steps and side walls of the staircase at the entry will be rebuilt and repaired. The Arch and side walls will be painted to match the Mansion.
- Existing wood gate to be removed and stored for display with other artifacts

Arbor:

- New columns will match historic columns found on site in height and architectural detail.
- Spacing of columns and location will be changed to accommodate new universally accessible path, and mature oaks on site.
- New vine species compatible with native oaks will be selected.

Sundial:

- Existing sundial base will remain in its present location. Pedestal will be rebuilt according to archive photographs. New, contemporary sundial/compass will be chosen, no archive photos are available that show the sundial piece.

Overlook:

- Existing overlook columns and base wall to remain. All caps and balustrades to be rebuilt according to archive photographs and existing artifacts on-site.
- New benches in same location as historical shown in archive photographs, architectural details not discernable in photos. New benches will be simple without ornamentation.

Reflecting Pool:

- Existing location and size of pool will remain unchanged. Depth of pool will be reduced to maximum of 6 inches. Repairs will be made to coping, pool sides and bottom. Plumbing and bottom of pool will be retrofitted to incorporate rainwater harvesting system.
- Brick path around pool will be installed, consistent with archive photos.
- New sculpture in center of pool will replace water feature(s) shown in archive photos. New sculpture will be distinctly different in style than those of the Rispin period.
- A tile mosaic is proposed for the bottom of the fountain. Mosaic will be commissioned by Capitola Arts Commission.

Wall Fountain and Lower Sitting Area behind Wall Fountain:

- Existing fountain will be repaired to working condition. Missing parts will be reconstructed using archive photographs and site artifacts.
- Urn will be selected to match historic using archive photographs.
- New fountain spout will be selected, historical fountain spout style not discernable in photos. New fountain spout will be simple without ornamentation.
- Lower seating area behind fountain and balustrade wall from grand staircase will be repaired according to archive photographs and existing artifacts on-site. Pathway from brick landing to seating area will be rebuilt.

Grand Staircase:

- All walls, columns, column caps, brick landings, to be repaired according to archive photographs and existing artifacts on-site. Steps to be rebuilt.
- A new metal handrail as per code will be added on each side, mounted in ground outside of cheek wall.

Miscellaneous Garden Features

- 12" high concrete wall along old walkway at northwest corner of park to remain.
- Rock fossil walls by staircase to remain.
- Stone wall at north end of park by new ramp to remain.
- Existing 18" wide red concrete steps north of arbor to remain; add handrail as per code
- Existing 4' wide concrete steps by Game Table area to remain; add chain barricade and sign to close off