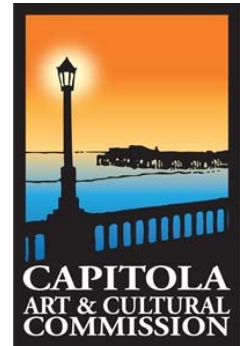


City of Capitola

Art & Cultural Commission

Tuesday November 14, 2023 – 6:30 PM

Council Chambers
420 Capitola Avenue, Capitola CA 95010



Chair: Roy Johnson

Vice Chair: Laurie Hill

Commissioners: Mary Beth Cahalen, Courtney Christiansen, Joe Clarke, Jennifer Major, James Wallace, Mario Beltramo, Artist Vacant Seat

Staff Representatives: Nikki Bryant LeBlond & Kelly Barreto

-
1. **Call to Order**
 2. **Additions and Deletions to the Agenda**
 3. **Public Oral Communication:** *Public Oral Communication allows members of the public to address the Commission on any Program Report or topics within the purview of the Commission not on the General Business agenda.*
 4. **Commissioner Comments**
 5. **Staff Comments**
 6. **Approval of Minutes- Regular Meeting October 10, 2023**
 7. **Program Reports:** *All items listed in program reports are staff or commission updates on planned program activity. Public Communication for these items is to be addresses during Public Oral Communication.*
 - a. **Twilight Concerts**
 - b. **Art at the Beach**
 - i. **Ukrainian Art in the Park**
 - c. **Movies at the Beach**
 - d. **Plein Air**
 8. **General Business:** *All items listed in General Business are intended to provide an opportunity for public discussion. The following procedure pertains to each General Business item 1) Staff explanation; 2) Commission Questions; 3) Public Comment; 4) Commission deliberation; 5) Decision.*
 - a. **Wharf Rehabilitation Project, Portland Loo Public Art:** *Receive report regarding Wharf Bathroom Public Art Project and approve staff to begin call to artist process.*
 - b. **Hammer & Silva Building Mosaic Public Art:** *Receive staff report and consider public art project.*
 9. **Future Agenda Items**
 10. **Adjournment**

Agenda and agenda Packet Materials: The Art and Cultural Commission Agenda is available on the City's website: www.cityofcapitola.org on Friday prior to the Tuesday meeting. If you need additional information, please contact the City Hall Department at (831) 475-7300

American with Disabilities Act: Disability-related aids or services are available to enable persons with a disability to participate in this meeting consistent with the Federal Americans with Disabilities Act of 1990. Assisted listening devices are available for individual with hearing impairments at the meeting in the City Council Chambers. Should you require special accommodation to participate in the meeting

due to a disability, please contact the City Clerk's office at least 24-hours in advance of the meeting at (831) 475-7300. In an effort to accommodate individuals with environmental sensitivities, attendees are requested to refrain from wearing perfumes and other scented products.

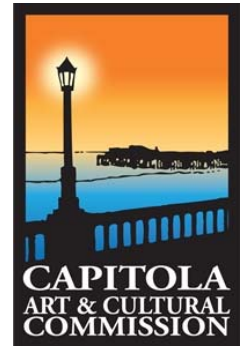
Appeals: Any person who believes that a final action of this advisory body has been taken in error may appeal that decision to the City Council. Appeals must be in writing and delivered to the City Clerk's Office within ten (10) working days from the time of the board's decision. The notice of appeal shall set forth appellant's name, phone number, address to which notices may be sent to the appellant, and the grounds upon which the appeal is made.

City of Capitola

Art & Cultural Commission: Draft Minutes

Tuesday, October 10, 2023 – 6:30 PM

Council Chambers
420 Capitola Avenue, Capitola CA 95010



Chair: Roy Johnson

Vice Chair: Laurie Hill

Commissioners: Mary Beth Cahalen, Courtney Christiansen, Joe Clarke, Jennifer Major, James Wallace, Mario Beltramo, Vacant Artist Seat

Staff Representatives: Nikki Bryant LeBlond & Kelly Barreto

1. Call to Order:

The meeting was called to order at 6:30 PM. In attendance: Cahalen, Clarke, Hill, Major, Johnson. Absent: Beltramo, Christiansen, Wallace

2. Additions and Deletions to the Agenda

None

3. Public Oral Communication

Goren: spoke on concerns about someone sleeping on street.

Gayle Ortiz: Spoke on the CWEP Public art proposal that will be on the November Regular meeting agenda

Gerry Jensen: Additional spoke on the public art and commented on a retail space in the mall to work on the project. He all commented that fundraising if still happening.

4. Commissioner Comments

No

5. Staff Comments

Staff commented on Tree Stump will get a sign and landscaping, Wharf Bathroom Public Art will be on next agenda, Brown Act & Zoom: Qualification for commissioner to attend on zoom need to be just cause or emergency.

6. Approval of Minutes- August 8, 2023

Motion to approve the Minutes: Vice Chair Hill

Second: Council Member Clarke

Voting Yea: Commissioner Cahalen, Council Member Clarke, Vice Chair Hill, Commissioner Major, Chair Johnson.

7. Program Reports

a. **Twilight Concerts:** Report included in packet

b. **Art at the Beach**

i. **Ukrainian Art in the Park:** Report included in packet

c. **Movies at the Beach:** Report included in packet

d. **Plein Air:** Vice Chair Hill provided a verbal update on Plein Air activity.

8. General Business

a. **Director of Finance**

Report given by Staff. Commissioners asked questions for clarity regarding the report. Chair Johnson asked for more information on what the commission can incorporate into the Art & Cultural budget. Staff commented on needed revisions to budget planning, goal setting and public art maintenance during the annual retreat.

Public Comment: None

Motion to approve: No Action Taken

b. Monterey Railing Public Art

Report given by Staff and Chair Johnson. Committee to meet and review answer from artist to further inform recommendation. Council Member Clarke asked about the noticing process for public art installation.

Public Comment: none

Motion to approve: No Action Taken

c. Hammer & Silva Building Mosaic Public Art

Report given by Staff Vice Chair Hill questioned if the building owners wanted project approval or the Commission to conduct the Public Art process for the space.

Commissioner Major commented that the sea wall are well loved. Chair Johnson commented on the art that was there before the storm damage.

Public Comment: None

Motion to approve Commissioner Christiansen follow up with the property owner for specific on request: Vice Chair Hill

Second: Chair Johnson

Voting Yea: Commissioner Cahalen, Council Member Clarke, Vice Chair Hill, Commissioner Major, Chair Johnson.

d. Movies at the Beach Committee Appointment

Report given by Staff. Chair Johnson asked about Commissioner Cahalen's experience on the committee. Vice Chair Hill requested more information about the movie attendance.

Public Comment: None

Motion to approve staff direction to provide a report on the Movies at the Beach event: Vice Chair Hill

Second: Council Member Clarke

Voting Yea: Commissioner Cahalen, Council Member Clarke, Vice Chair Hill, Commissioner Major, Chair Johnson.

9. Future Agenda Items

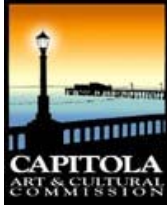
Monterey Ave Railing Public Art Project, CWEP Public Art Review, Begonia Festival Commemorative Public Art Project, Wharf Bathroom Public Art Project, Budget planning for special projects.

10. Adjournment

The meeting was adjourned at 7:56 PM to the next regular Art & Cultural Commission meeting on November 14, 2023.

ATTEST:

Nikki Bryant LeBlond



Item #: 8.a

ART & CULTURAL COMMISSION AGENDA REPORT

MEETING OF November 14, 2023

FROM: Staff
DATE: October 30, 2023
SUBJECT: Wharf Portland Loo Public Art Project

Recommended Action: Receive report on Wharf Rehabilitation Project, Portland Loo Bathroom Public Art project and approve staff to begin the call to artist process.

BACKGROUND

The Planning Commission reviewed final designs for two public bathrooms on Capitola Wharf as part of the Wharf Rehabilitation Project. The proposed public bathrooms are a building at the entrance of the Wharf and a Portland Loo, a prefabricated public bathroom often used in City development, that will be located near the building at the end of the Wharf. The planning commission expressed concerns with the industrial appearance of the Portland Loo and conditioned enhancements of the exterior of the Portland Loo be reviewed by the Art & Cultural Commission for a public art project.

DISCUSSION

The Wharf Rehabilitation Project broke ground in September 2023 and projected completion April 2023. In order to align project completion with Public Art installation the Commission should identify a concept for the Portland Loo and begin the Call to Artist process for the project.

FISCAL IMPACT Project costs for this public art are incorporated into the Wharf Rehabilitation Budget and will not draw from the Public Art Fund. Staff reached out and identified that similar projects had a budget of \$6,000. If the commission desired to set the budget higher than \$10,000, the recommendation will need to be approved by the Council.

ATTACHMENT

1. Portland Loo Structural Drawings
2. Example Images
3. Monrovia Call to Artist

Report Prepared By: Nikki Bryant LeBlond
Recreation Division Manager

THE PORTLAND LOO

STRUCTURAL DRAWINGS

CAPITOLA CA

DESIGN INFORMATION

1. MEETS BUILDING CODES
2. LIVE LOAD = 20 PSF
3. WIND LOAD:
V=94 MPH
EXPOSURE = C
RISK CATEGORY = II
INTERNAL PRESSURE = +/- 0.18
4. SEISMIC LOAD:
SITE CLASS = D
I = 1.0
Fa=1.346
Fv =1.894
Sds = 0.510
Sd1 = 0.319
SDC = D
R = 7.0
5. NET ALLOWABLE SOIL BEARING PRESSURE: 1500 PSF
F'C=4000 PSI
6. CONTRACTOR TO VERIFY DESIGN PARAMETERS SHOWN WITH ACTUAL SITE CONDITIONS AND ENSURE ACTUAL SITE PARAMETERS DO NOT EXCEED DESIGN

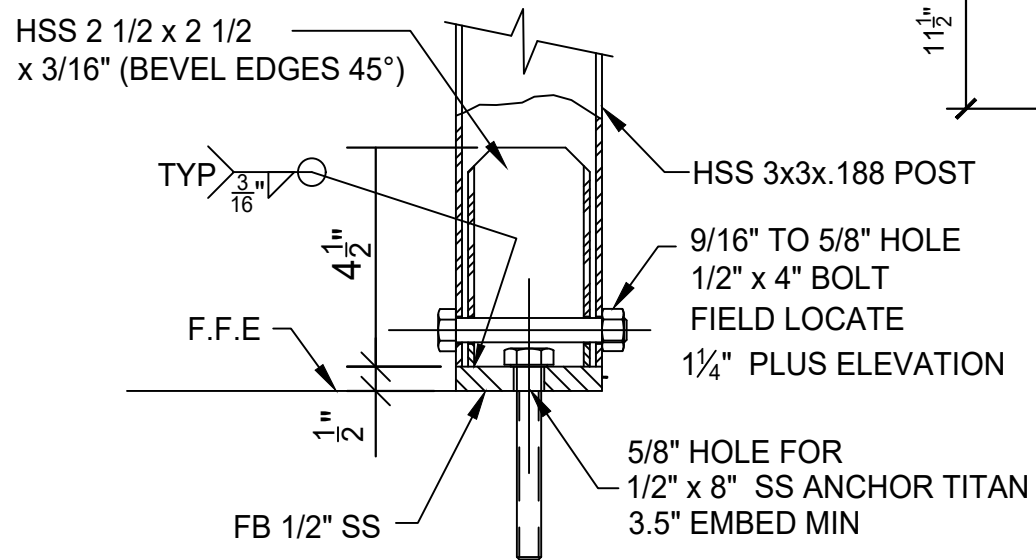
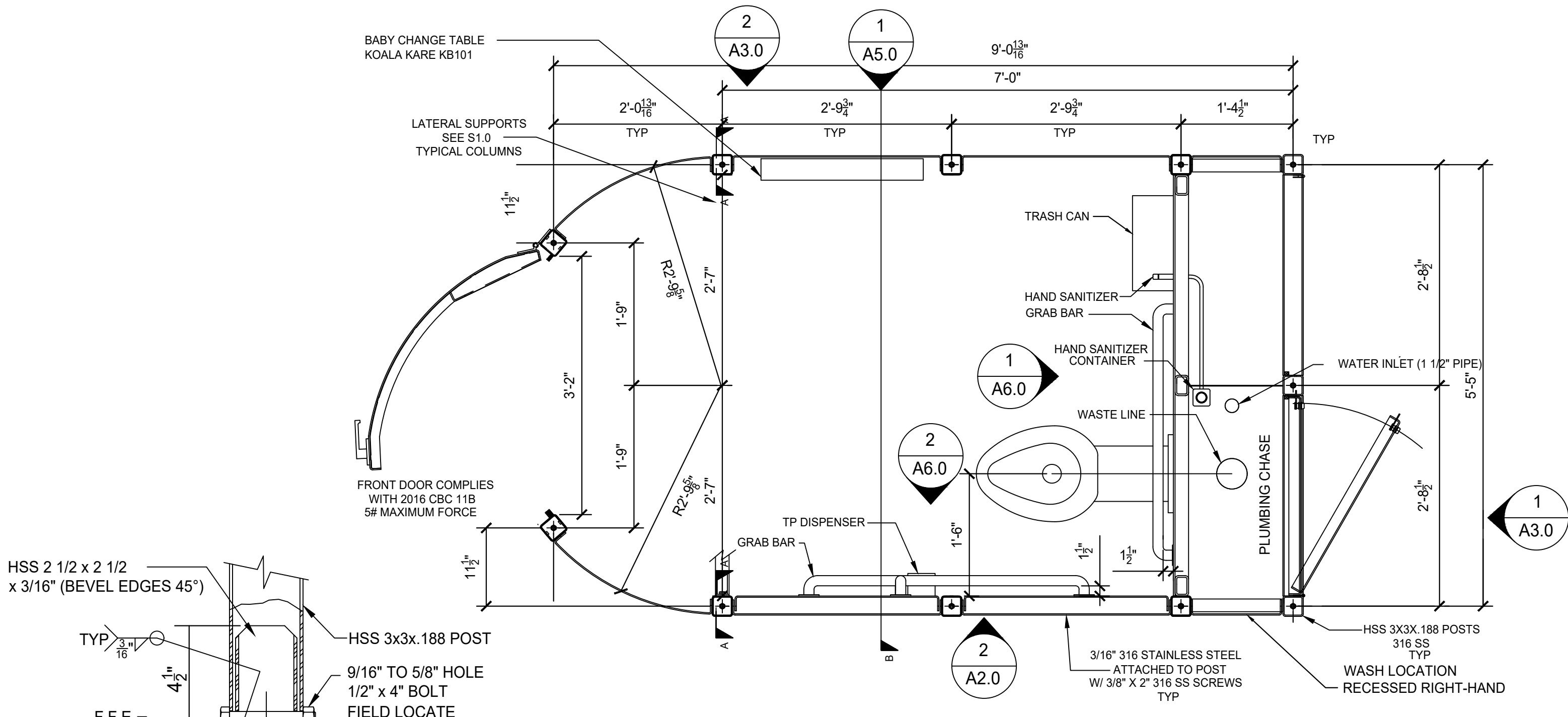
GENERAL NOTES

1. WEIGHT : 6,013 lbs
2. SQUARE FOOTAGE : 51.5
3. ALL STRUCTURAL STEEL TO BE FABRICATED AND ERECTED IN ACCORDANCE WITH AISC MANUAL 14TH EDITION & A.W.S. ALL PANELS, LOUVERS, AND ROOF TO BE 316 STAINLESS STEEL Fy = 30 ksi
4. STRUCTURAL TUBING 316 STAINLESS STEEL
5. ANCHOR BOLTS 1/2" X 8" 316 STAINLESS STEEL SIMPSON TITEN ANCHORS
6. ALL WELDING TO BE DONE BY CERTIFIED WELDERS. WELD FILLER ELECTRODE MATERIAL TO BE 70 ksi LOW HYDROGEN
7. ALL EXPOSED BOLTS AND SCREWS TO BE TAMPER RESISTANT FOR HEX PIN BITS.
8. RIVET NUTS TO BE C.F.T. SERIES AND STAINLESS STEEL 302.
9. ALL MATERIALS TO BE SAND BLASTED AND POWDER COATED
10. ALL STRUCTURES TO BE FABRICATED OFF SITE SHALL BE DONE IN SHOPS OR FABRICATORS LICENSED OR APPROVED BY THE BUILDING AND ENGINEERING DIVISION OF THE CITY FOR WHICH THE INSTALLATION WILL OCCUR

SHEET INDEX:

- A0.0 COVER SHEET
- A1.0 FLOOR PLAN
- A2.0 EXTERIOR ELEVATIONS FRONT & RIGHT SIDE
- A3.0 EXTERIOR ELEVATIONS BACK & LEFT SIDE
- A4.0 ROOF LAYOUT
- A5.0 INTERIOR SECTION VIEW
- A6.0 INTERIOR SECTION VIEWS
- S1.0 COLUMN AND BEAM LAYOUT
- S2.0 FRONT DOOR
- S3.0 FOUNDATION & ANCHOR BOLT LOCATIONS
- P1.0 PLUMBING FLOOR PLAN
- P2.0 PLUMBING DETAIL
- E1.0 ELECTRICAL SCHEMATIC

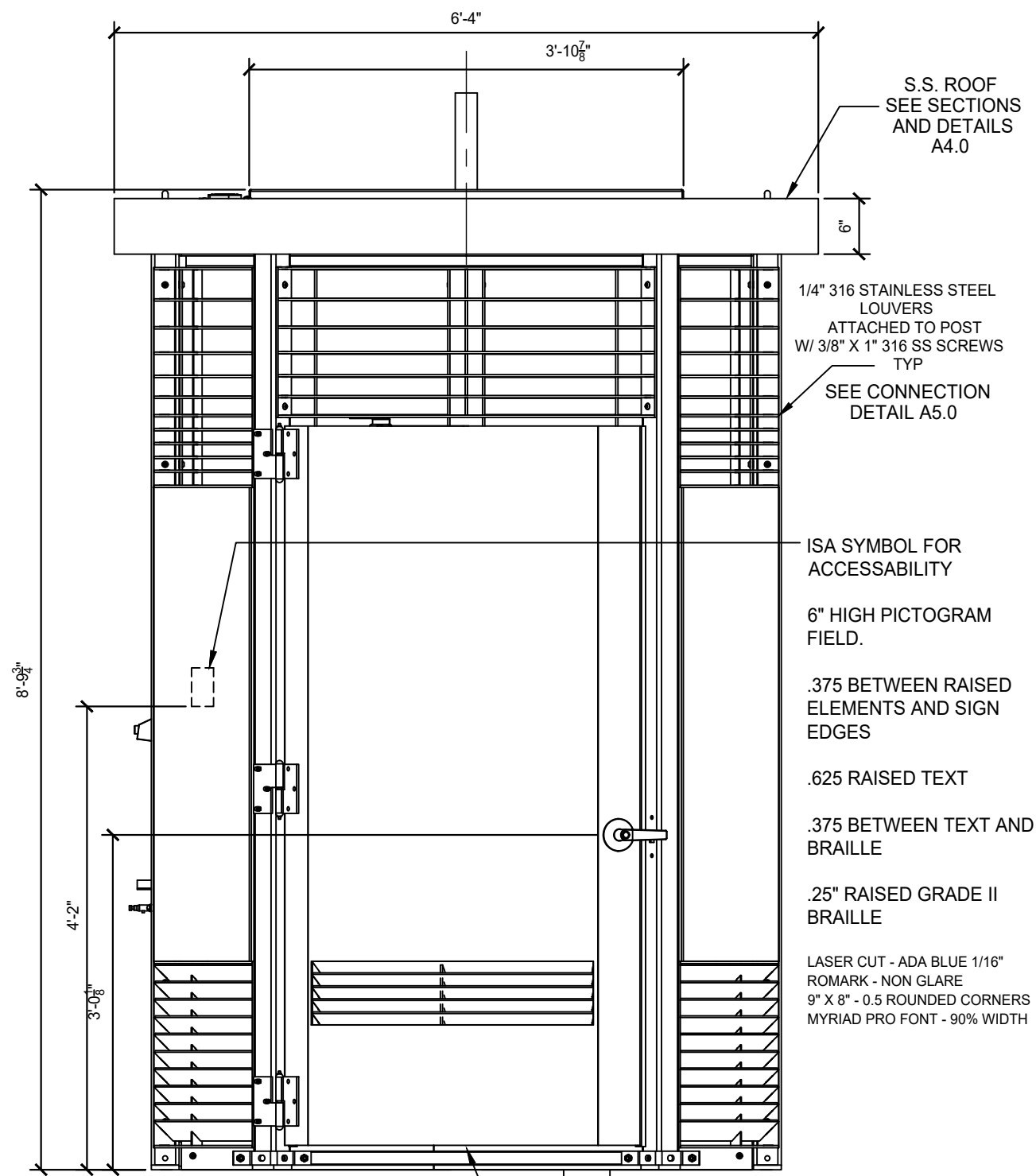
1	08/15/23	INITIAL ISSUE	JBG		MADDEN FABRICATION	CAPITOLA CA,			
						COVER SHEET			
					2550 NW 25th Place Portland, OR. 97210 Phone: (503) 226-3968 Fax (503) 242-2446				
REV	DATE	DESCRIPTION	DRN	APP'D	NAME	DATE	SERIAL NO.	DRW. NO.	
					JBG	08/15/2023		A0.0	



SECTION A-A
 Typ anchoring system
 (11) REQ'D
 MATCH DETAIL 3
 ON SHEET C-128
 OF CONTRACT DRAWINGS

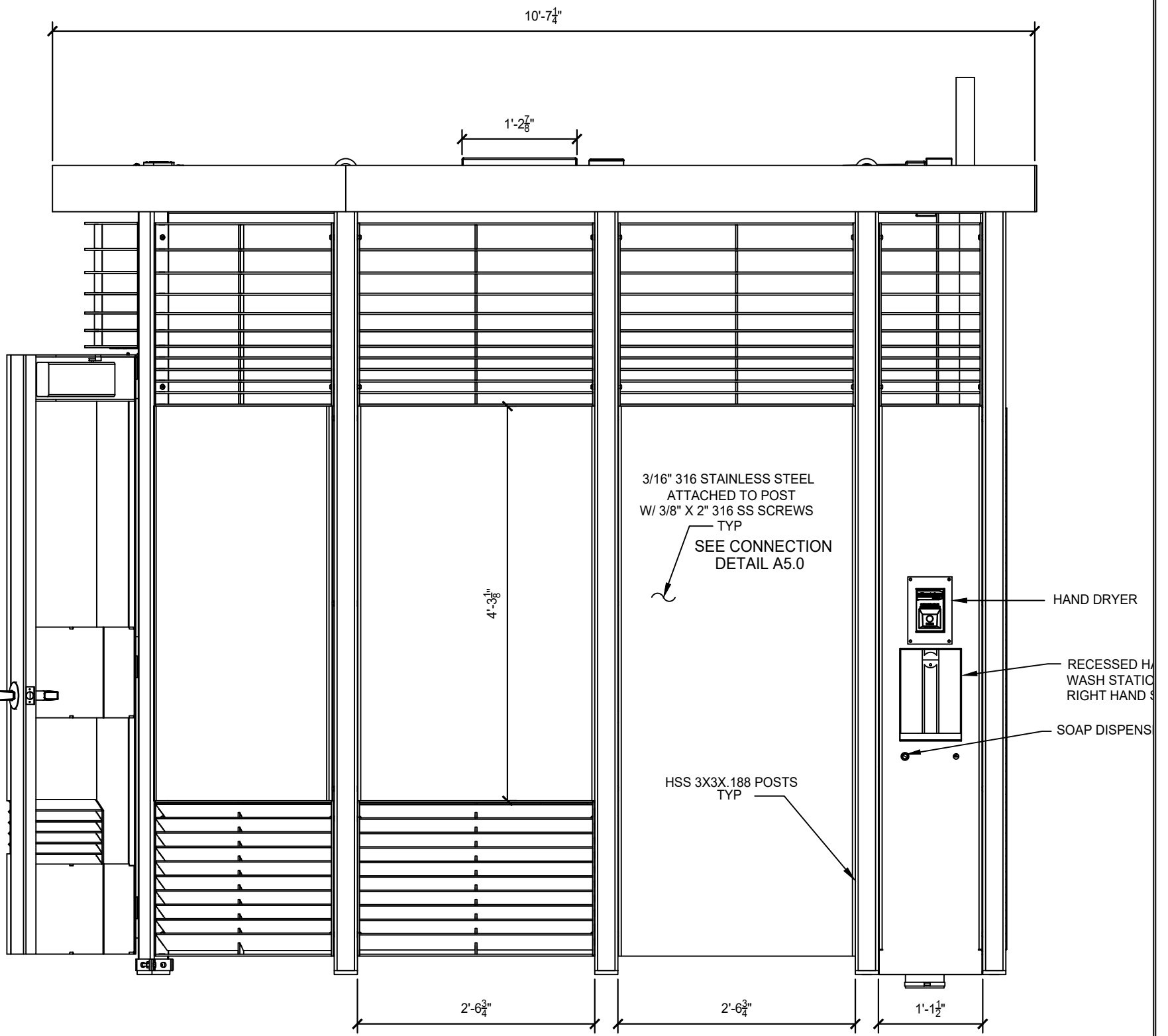
INTERNAL TOP VIEW
 AND ANCHOR BOLT LOCATIONS

1	08/15/23	INITIAL ISSUE	JBG		MADDEN FABRICATION	CAPITOLA CA,			
						FLOOR PLAN			
					2550 NW 25th Place Portland, OR. 97210 Phone: (503) 226-3968 Fax (503) 242-2446	NAME	DATE	SERIAL NO.	DRW. NO.
REV	DATE	DESCRIPTION	DRN	APP'D		JBG	08/15/2023		A1.0



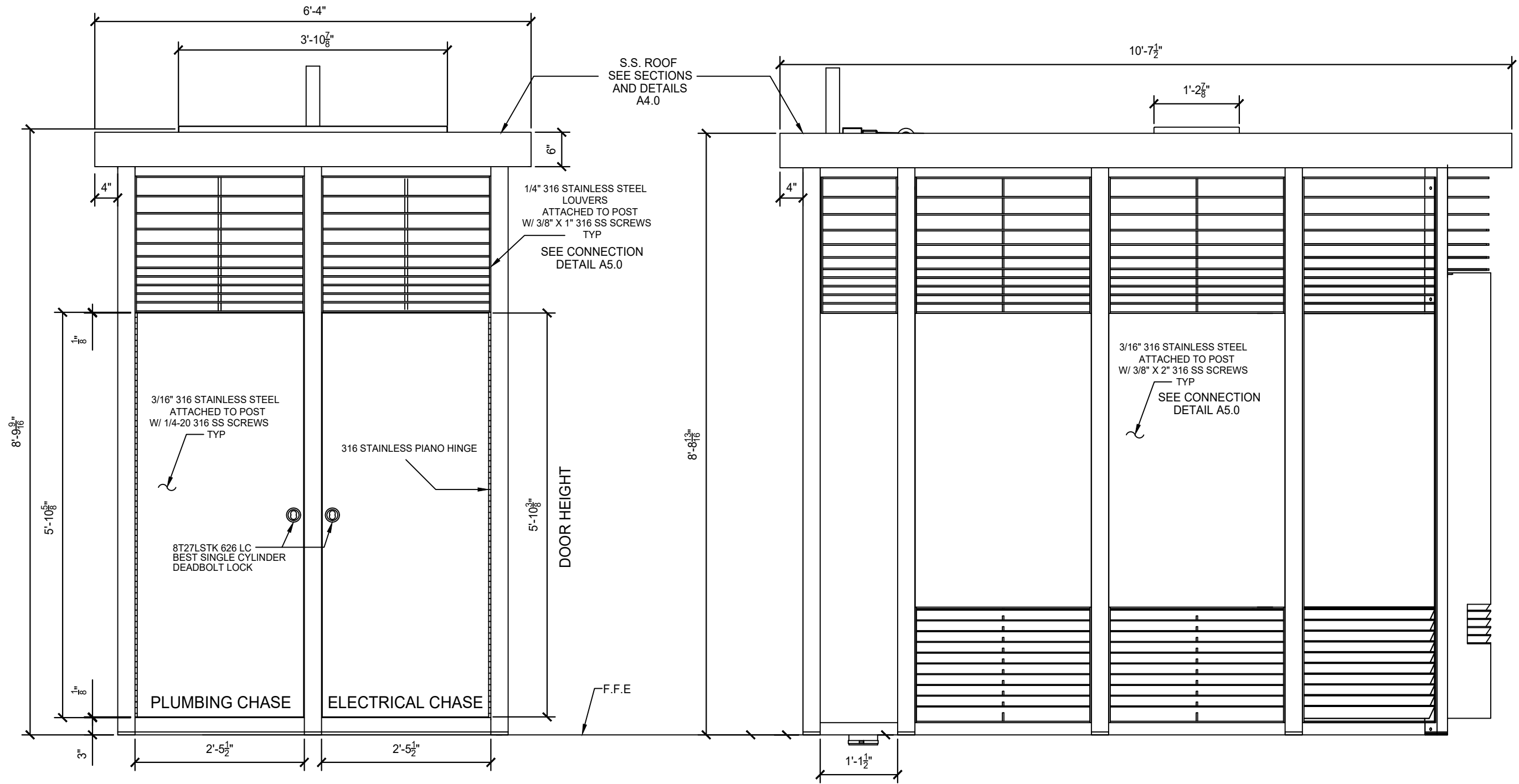
1
S2.0

1 FRONT ELEVATION VIEW
A2.0



2 RIGHT ELEVATION VIEW
A2.0

▲	08/15/23	INITIAL ISSUE	JBG		MADDEN FABRICATION	CAPITOLA CA,			
						EXTERIOR ELEVATIONS FRONT & RIGHT SIDES			
REV	DATE	DESCRIPTION	DRN	APP'D	2550 NW 25th Place Portland, OR. 97210 Phone: (503) 226-3968 Fax (503) 242-2446	NAME	DATE	SERIAL NO.	DRW. NO.
						JBG	08/15/2023		A2.0



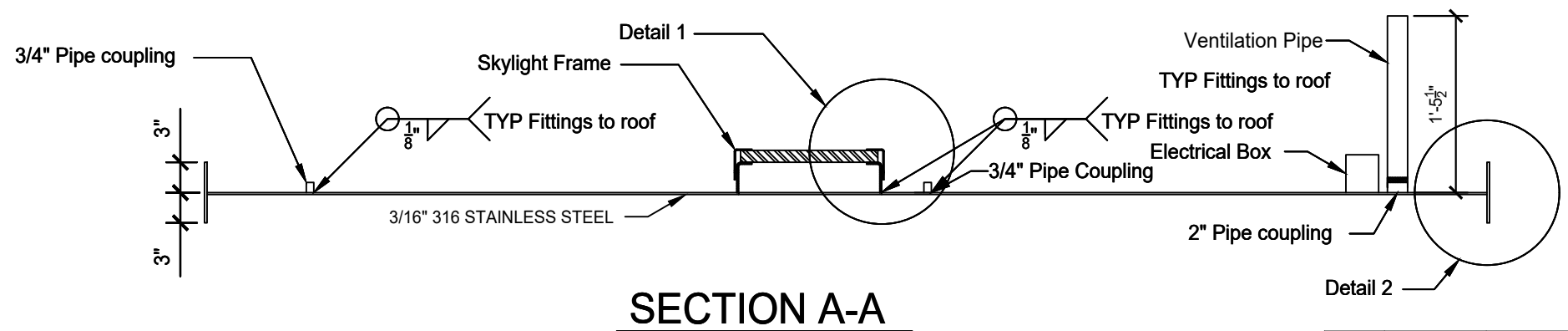
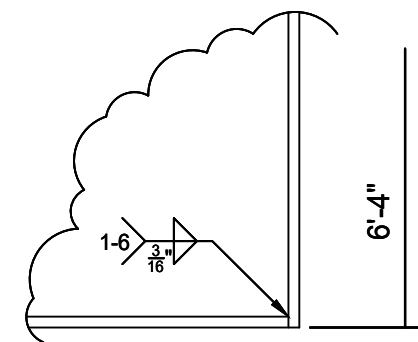
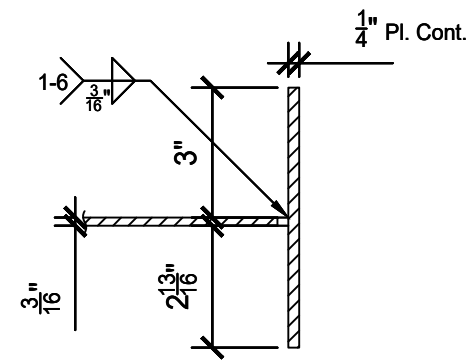
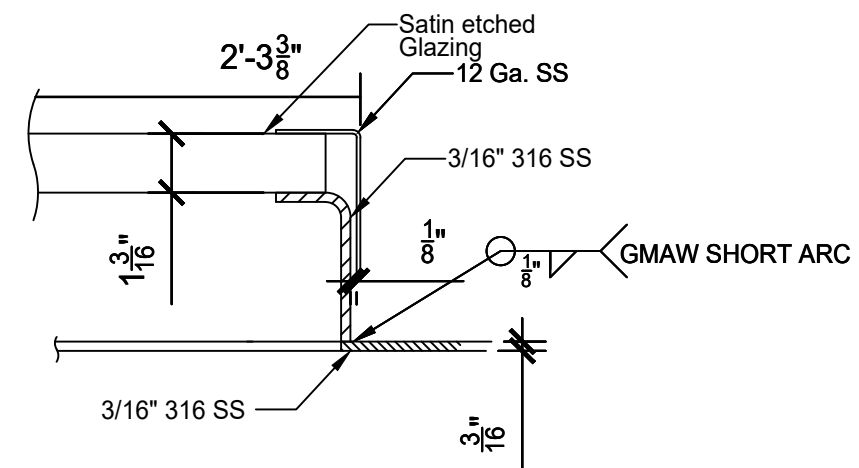
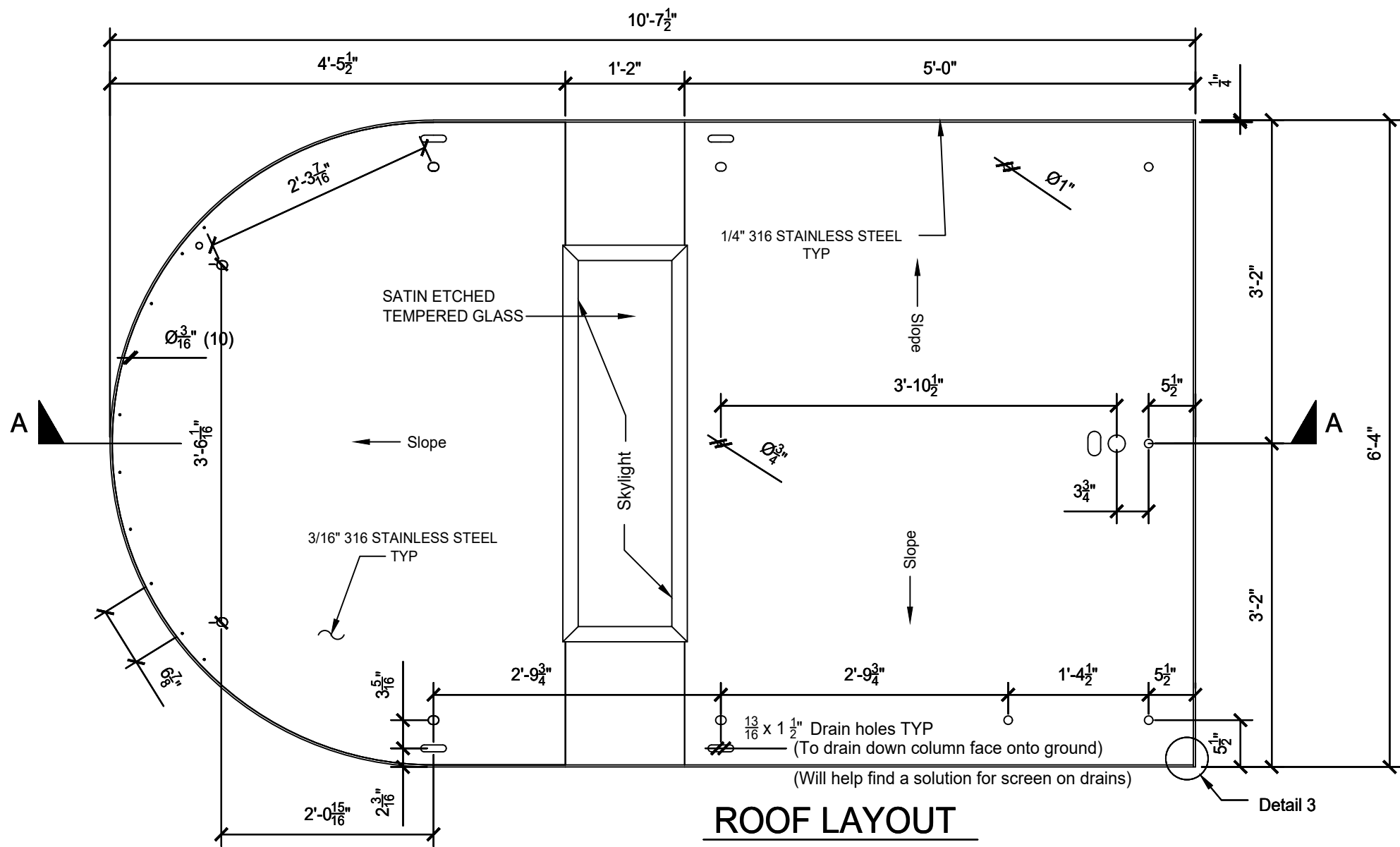
1 BACK ELEVATION VIEW
A3.0

2 LEFT ELEVATION VIEW
A3.0

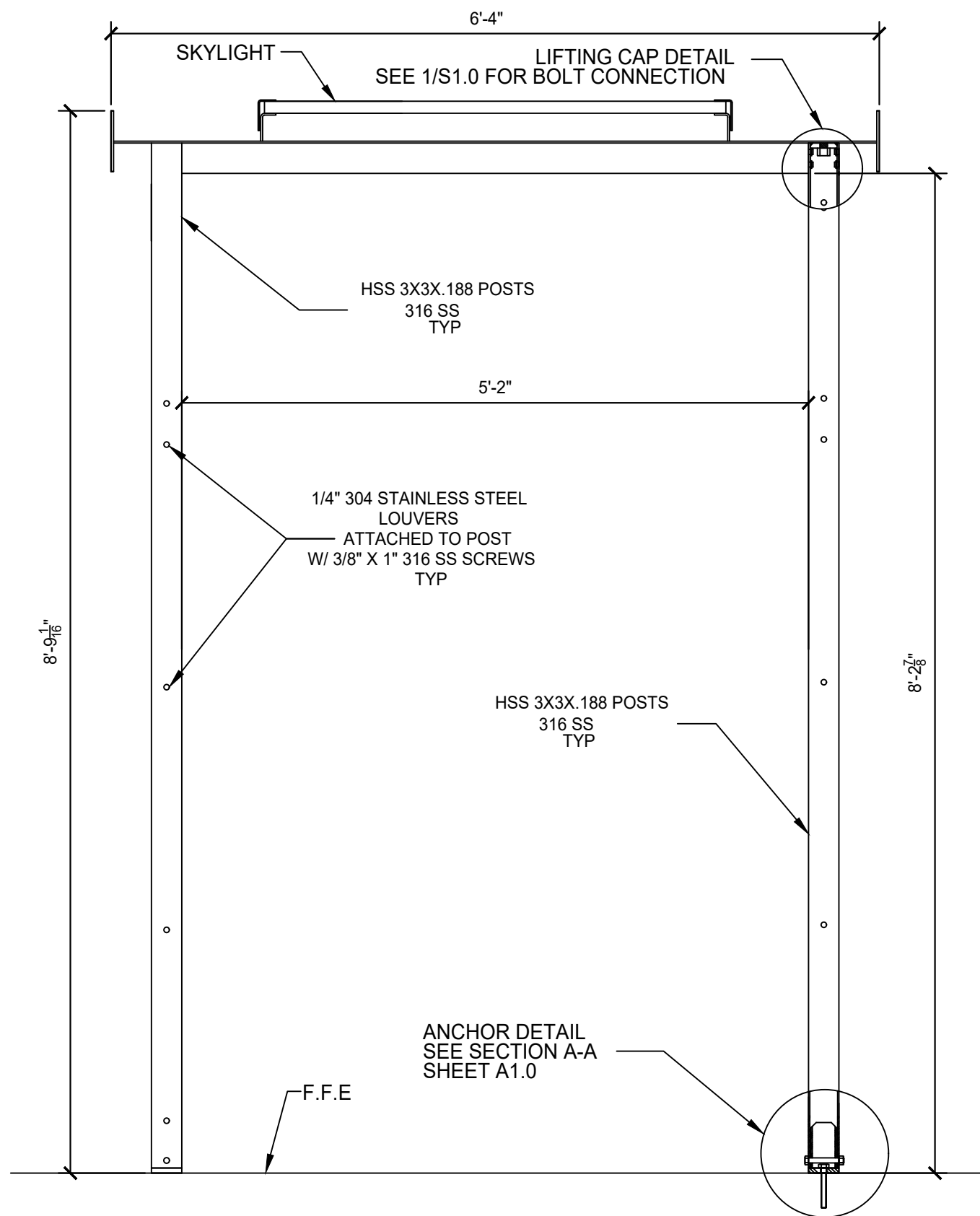
***PLUMBING CHASE GIVES ACCESS TO WATER/SEWER CONNECTIONS, PLUMBING MANIFOLD, AND HAND SANITIZER

***ELECTRICAL CHASE GIVES ACCESS TO SHARPS DISPOSAL, SOAP DISPENSER AND HAND WASH COMPONENTS

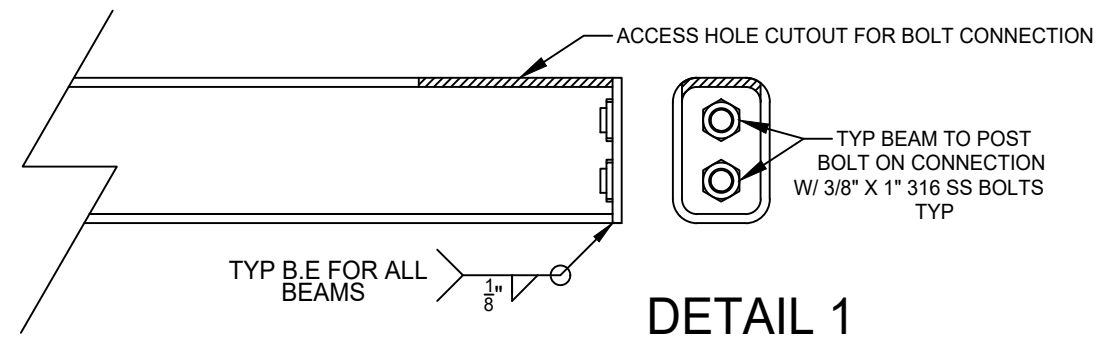
1	08/15/23	INITIAL ISSUE	JBG	MADDEN FABRICATION 2550 NW 25th Place • Portland, OR 97210 Phone: (503) 226-3968 Fax (503) 242-2446	CAPITOLA CA,			
					EXTERIOR ELEVATIONS FRONT & RIGHT SIDES			
REV	DATE	DESCRIPTION	DRN	APP'D	NAME	DATE	SERIAL NO.	DRW. NO.
					JBG	08/15/2023		A3.0



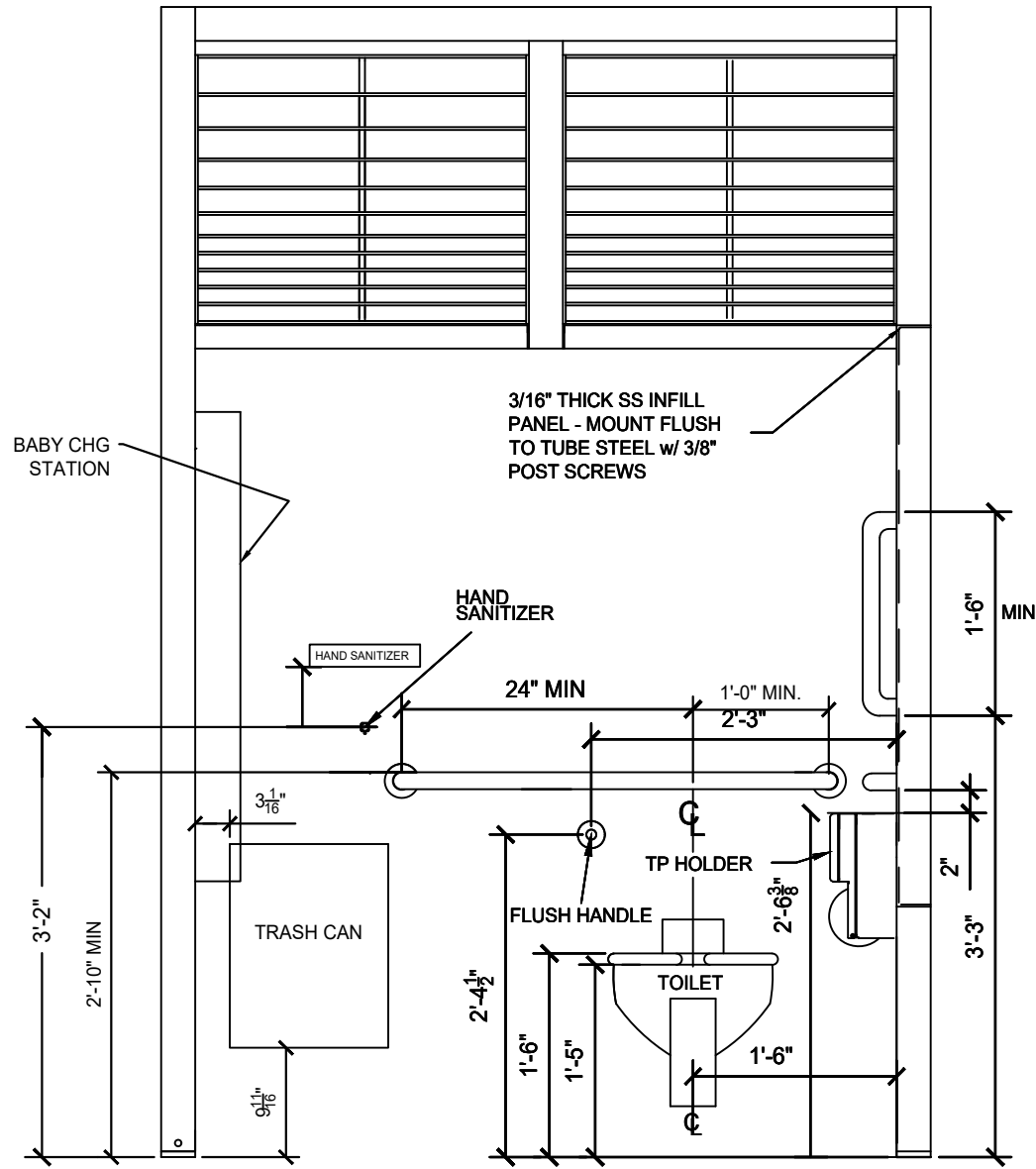
1	08/15/23	INITIAL ISSUE	JBG		MADDEN FABRICATION	CAPITOLA CA,			
						ROOF LAYOUT			
REV	DATE	DESCRIPTION	DRN	APP'D	2550 NW 25th Place • Portland, OR. 97210 Phone: (503) 226-3968 Fax (503) 242-2446	NAME	DATE	SERIAL NO.	DRW. NO.
						JBG	08/15/2023		A4.0



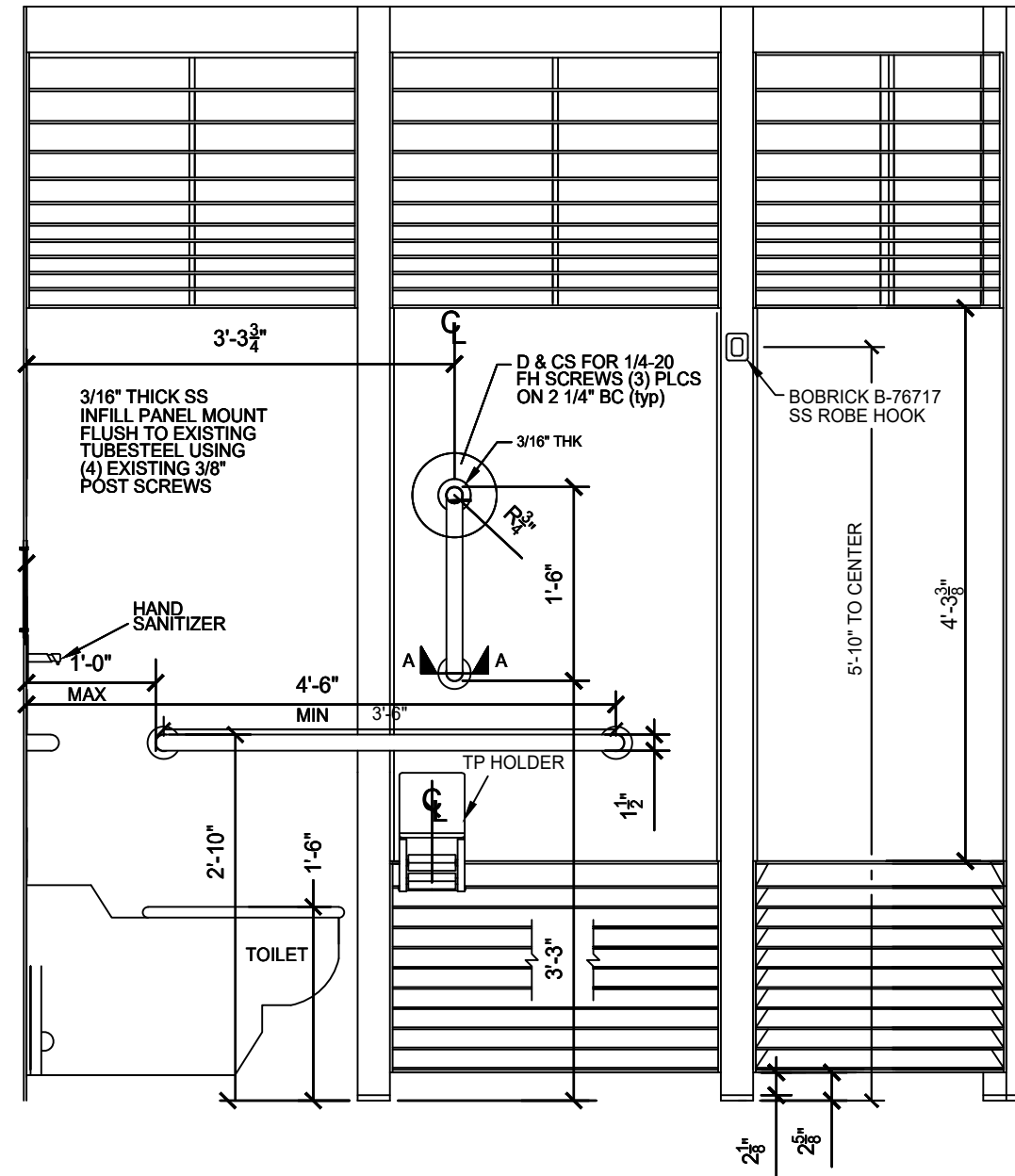
B-B INTERIOR ELEVATION VIEW
A1.0



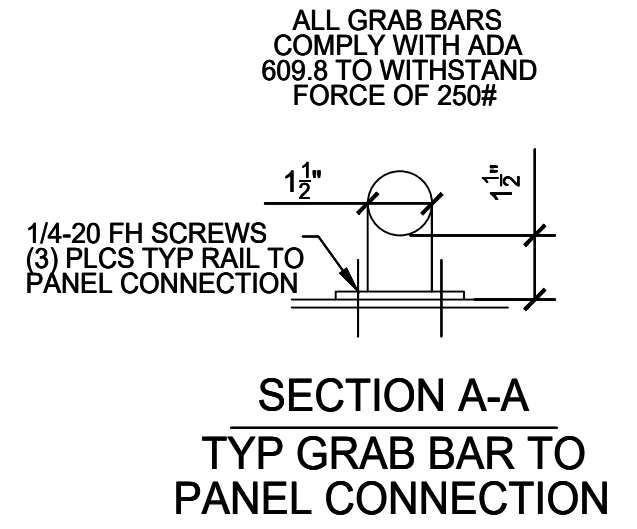
1	08/15/23	INITIAL ISSUE	JBG		MADDEN FABRICATION	CAPITOLA CA,			
						INTERIOR SECTION VIEW			
REV	DATE	DESCRIPTION	DRN	APP'D	2550 NW 25th Place Portland, OR. 97210 Phone: (503) 226-3968 Fax (503) 242-2446	NAME JBG	DATE 08/15/2023	SERIAL NO.	DRW. NO. A5.0



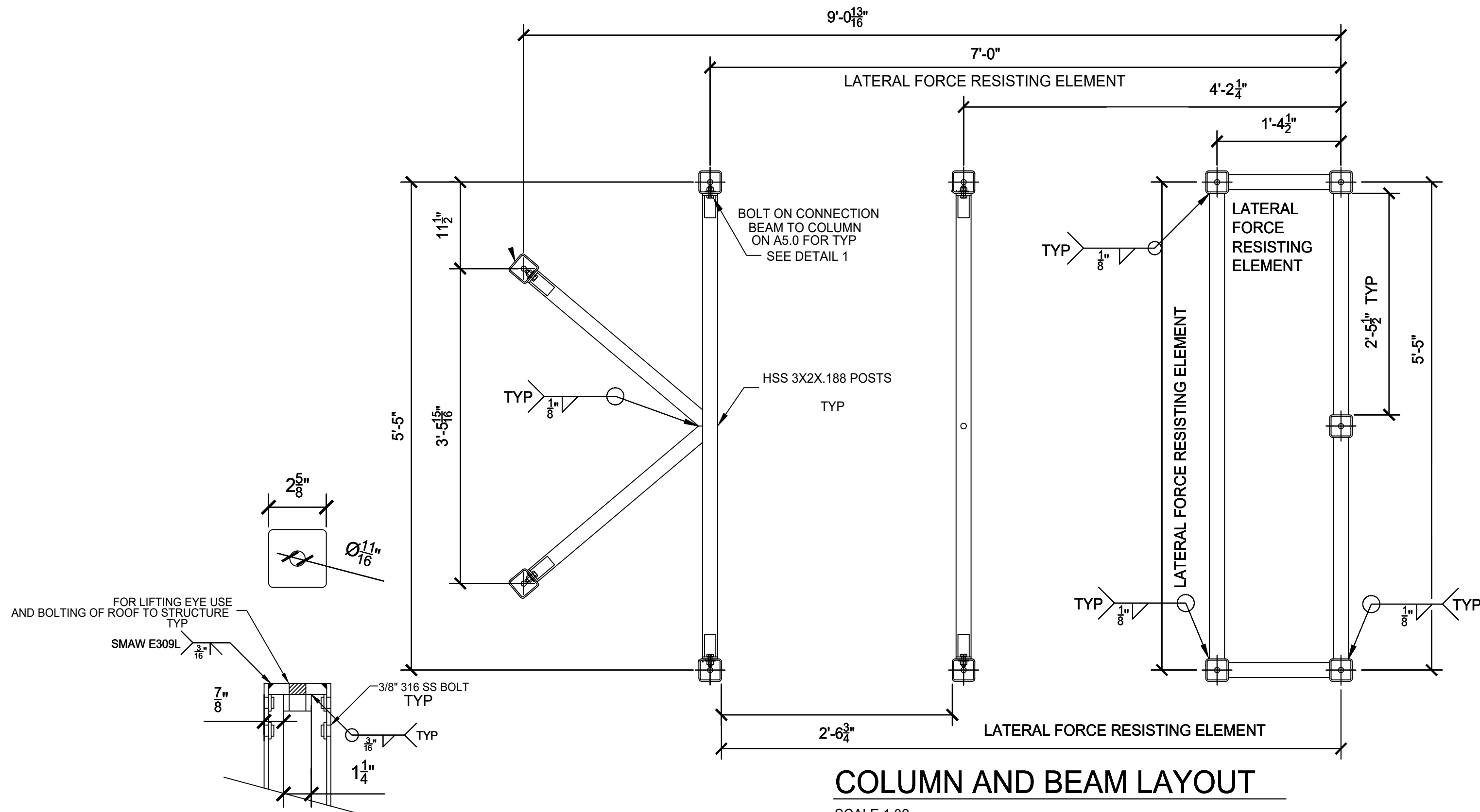
1 WATER CLOSET RAILING
 A6.0 1 1/2"Øx.120" wall ss
 PL 3/16" 316 SS
 (1) Assm REQ'D



2 WATER CLOSET RAILING
 A6.0 1 1/2"Øx.120" wall ss
 PL 3/16" 316 SS
 (1) Assm REQ'D



1	08/15/23	INITIAL ISSUE	JBG	MADDEN FABRICATION 2550 NW 25th Place Portland, OR. 97210 Phone: (503) 226-3968 Fax (503) 242-2446	CAPITOLA CA,			
					INTERIOR SECTION VIEWS			
REV	DATE	DESCRIPTION	DRN	APP'D	NAME	DATE	SERIAL NO.	DRW. NO.
					JBG	08/15/2023		A6.0



COLUMN AND BEAM LAYOUT

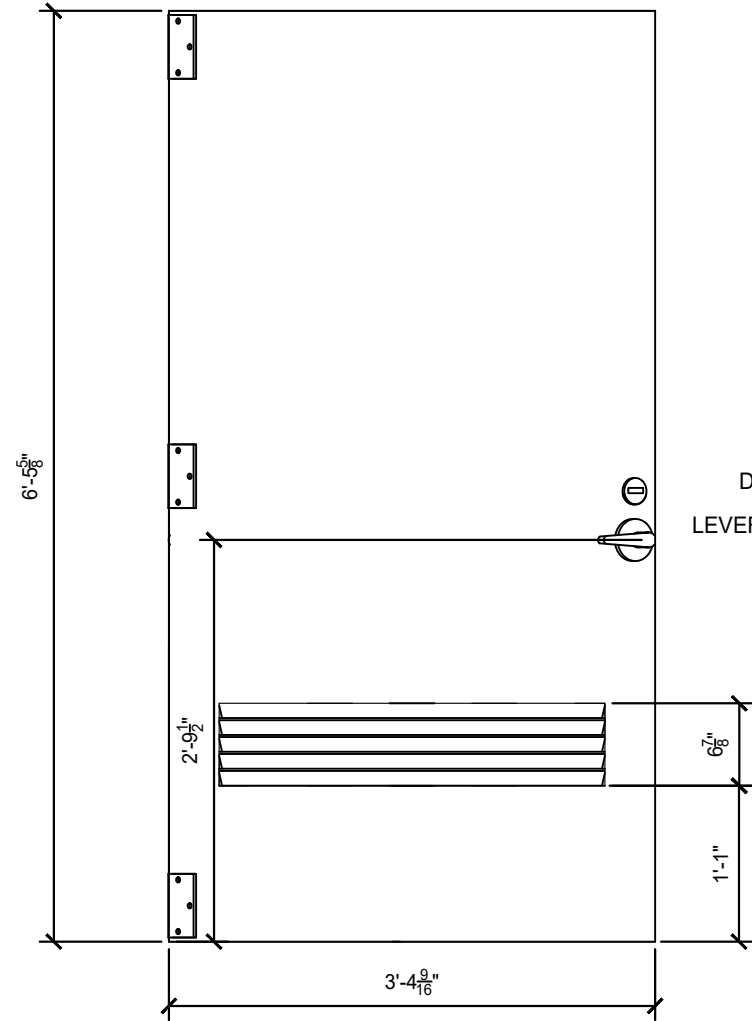
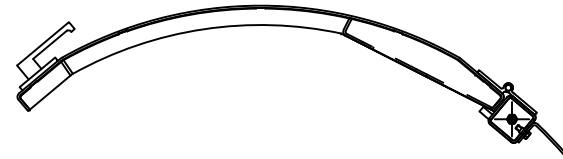
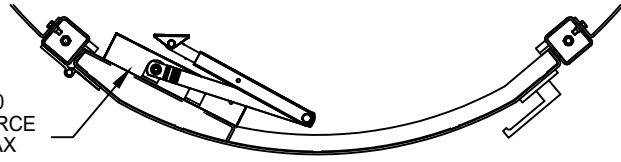
SCALE 1:32

1
S1.0

COLUMN LIFTING CAP
1/2" 316 SS
TAP FOR 3/4-10 Bolt
(11) REQ'D

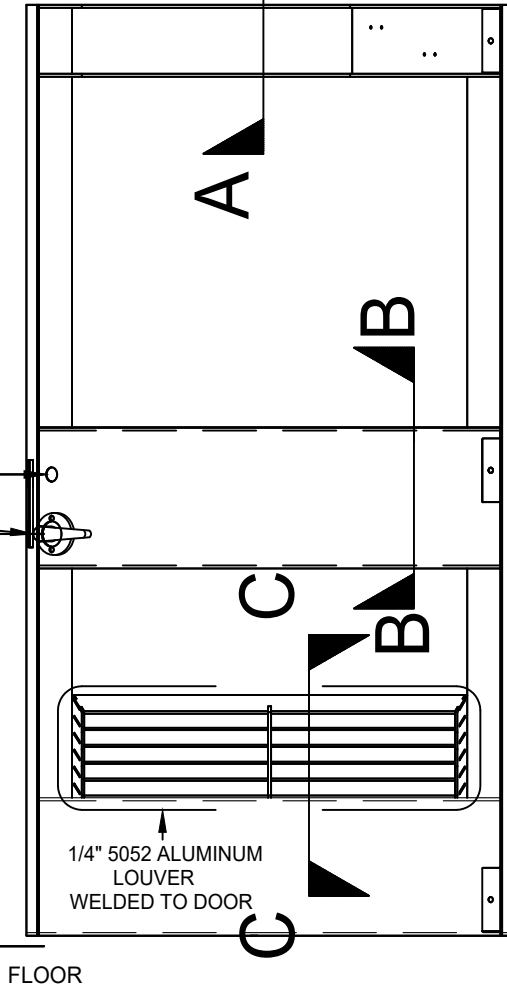
1	08/15/23	INITIAL ISSUE	JBG		MADDEN FABRICATION	CAPITOLA CA,			
						COLUMN & BEAM LAYOUT			
					2550 NW 25th Place Portland, OR. 97210 Phone: (503) 226-3968 Fax (503) 242-2446	NAME	DATE	SERIAL NO.	DRW. NO.
REV	DATE	DESCRIPTION	DRN	APP'D		JBG	08/15/2023		S1.0

NORTON 9540
JR CLOSER FORCE
AT 5# - 10# MAX



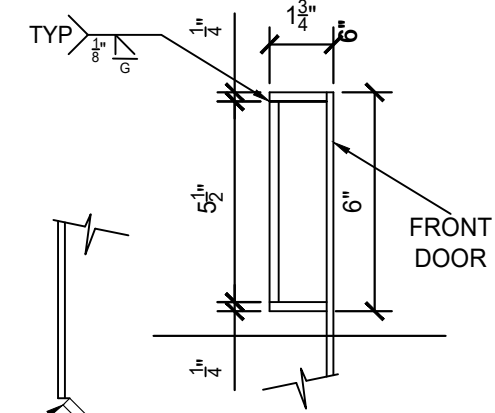
DEADBOLT
LEVER HANDLE

3'-3 5/8" (34" MIN - 44" MAX)



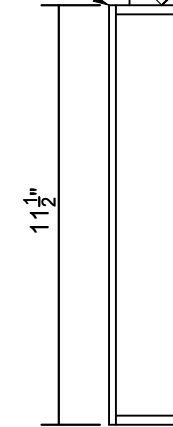
1/4" 5052 ALUMINUM
LOUVER
WELDED TO DOOR

FLOOR



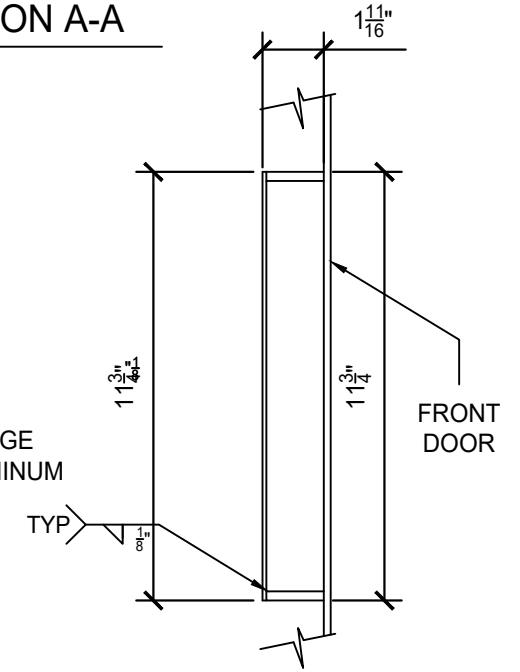
SECTION A-A

1/4" 5052 ALUMINUM
3/16" 5052 ALUMINUM



SECTION C-C

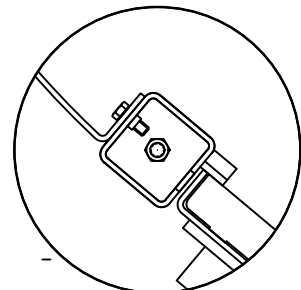
12 GAUGE
5052 ALUMINUM



SECTION B-B

FRONT DOOR

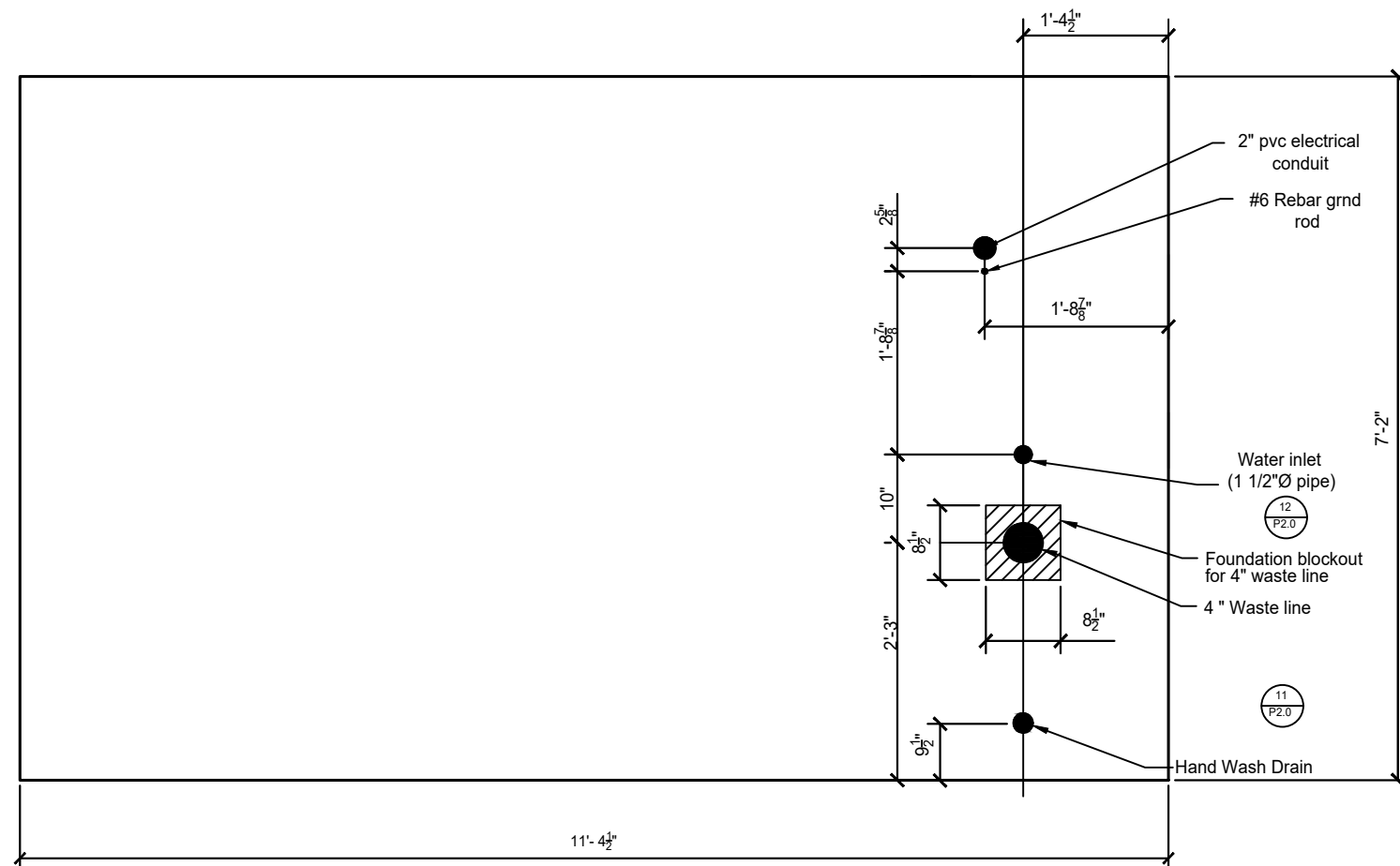
- 1 RIGHT ENTRY DOOR (STANDARD)
PL 3/16" 5052 ALUMINUM
(1) REQ'D



DETAIL 1

BACKSIDE (INTERIOR)

1	08/15/23	INITIAL ISSUE	JBG		MADDEN FABRICATION	CAPITOLA CA,			
						FRONT DOOR			
REV	DATE	DESCRIPTION	DRN	APP'D	2550 NW 25th Place Portland, OR. 97210 Phone: (503) 226-3968 Fax (503) 242-2446	NAME JBG	DATE 08/15/2023	SERIAL NO.	DRW. NO. S2.0

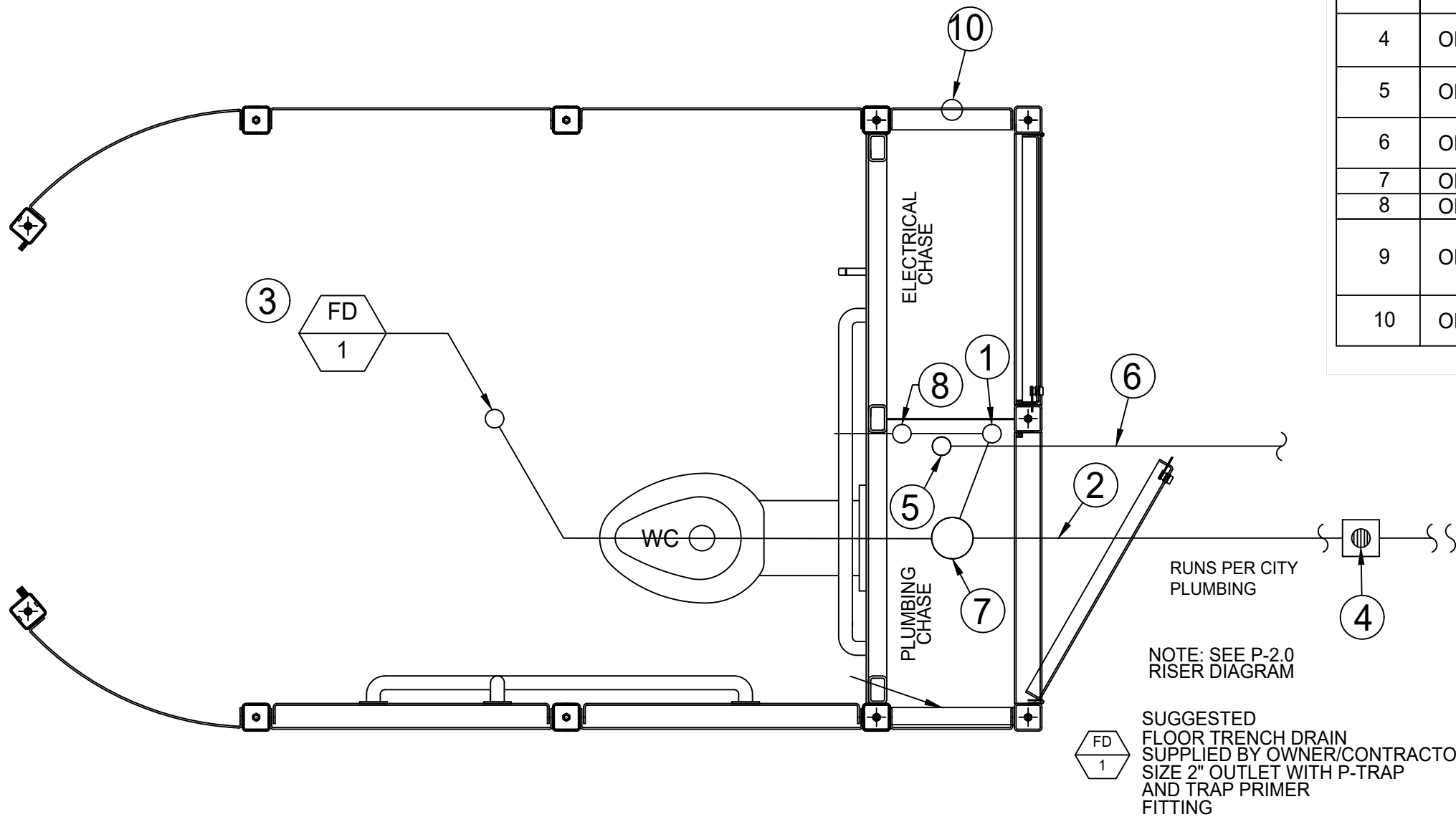


GENERAL NOTES:

1. Provide all materials and perform all work according to the current edition of the Specifications of the Authority Having Jurisdiction.
2. All concrete shall be Structural Class 4000. FC = 4000. F'c= 4000psi
3. All reinforcing steel shall conform to ASTM A706 or A615 Grade 60.
4. Place bars 3 inches clear of the nearest face of concrete unless shown otherwise.
5. Concrete footing may be poured integrally with 4' sidewalk, providing a deep cut tool joint is located around perimeter of footing.
6. Stanchions section "A-A" / A1.0 to be fastened to the concrete using 1/2" dia. Titan HD (3.5" Embed) The Loos columns to be fastened to stanchions.
7. Location of anchor bolts to be located and drilled using template provided before installation by Madden Fabrication.

1	08/15/23	INITIAL ISSUE	JBG	MADDEN FABRICATION	CAPITOLA CA,			
					FOUNDATION & ANCHOR BOLT LOCATIONS			
					NAME	DATE	SERIAL NO.	DRW. NO.
REV	DATE	DESCRIPTION	DRN	APP'D	JBG	08/15/2023		S3.0

2550 NW 25th Place Portland, OR. 97210
Phone: (503) 226-3968 Fax (503) 242-2446

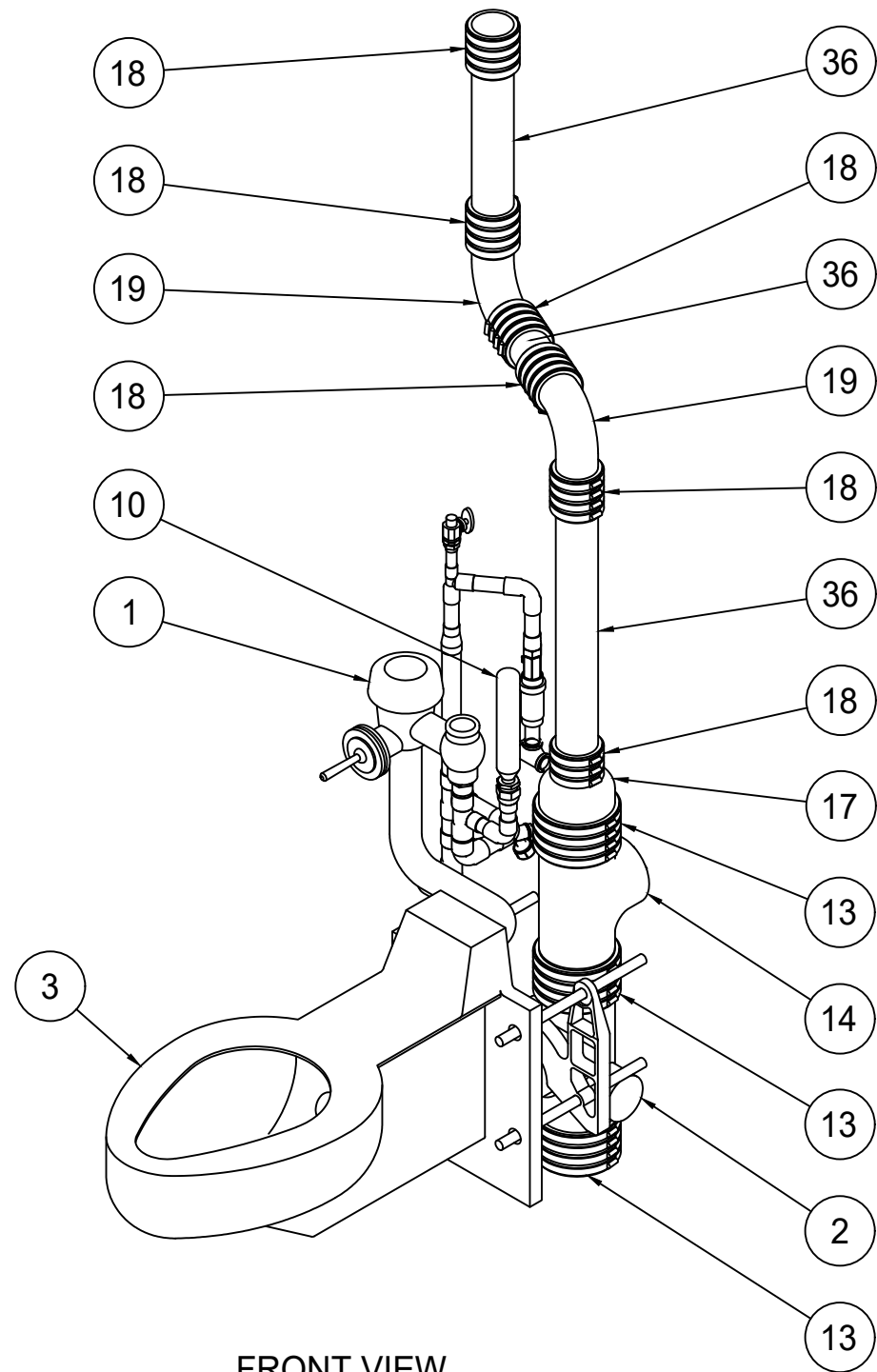


BILL OF MATERIAL			
ITEM	QTY	DESCRIPTION	MFG.
1	ONE	2" VENT PIPE TUBE TO ROOF	VARIOUS
2	ONE	LINE TO P.O.C.	VARIOUS
3	ONE	ROUTE CW SUPPLY TO FLOOR DRAIN P-TRAP FROM TRAP PRIMING LOCATED IN PLUMBING CHASE	JAY R. SMITH
4	ONE	4" GRADE CLEAN-OUT (QTY & LOCATION PER LOCAL CODE)	VARIOUS
5	ONE	WATER INLET 1-1/2" C.W. SUPPLY SHOWN ON SHEET 7	VARIOUS
6	ONE	1-1/2" C.W. SUPPLY TO SOV SHOWN ON SHEET 7	VARIOUS
7	ONE	4" SEWER LINE CARRIER SHOW ON P2.0	VARIOUS
8	ONE	TRAP PRIMER VALVE (PER LOCAL CODE)	PRIME-RIGHT
9	ONE	WASH BASIN FLOOR DRAIN P-TRAP FROM TRAP PRIMING LOCATED IN PLUMBING CHASE	VARIOUS
10	ONE	2" SEWER DRAIN FOR RECESSED HAND WASH	VARIOUS

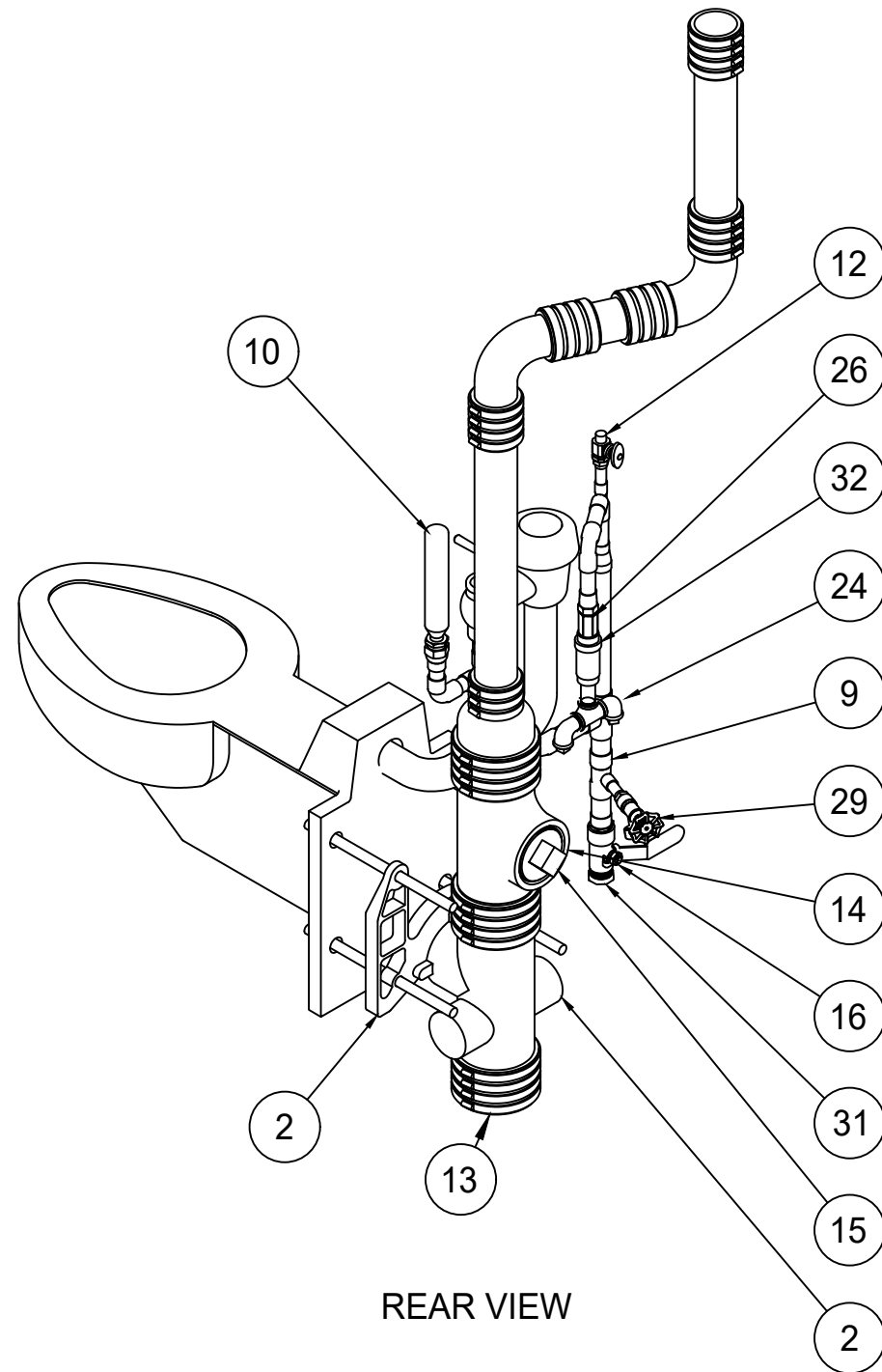
NOTE: SEE P-2.0
RISER DIAGRAM

SUGGESTED
FLOOR TRENCH DRAIN
SUPPLIED BY OWNER/CONTRACTOR
SIZE 2" OUTLET WITH P-TRAP
AND TRAP PRIMER
FITTING

1	08/15/23	INITIAL ISSUE	JBG	MADDEN FABRICATION	CAPITOLA CA,				
					PLUMBING DETAIL				
REV	DATE	DESCRIPTION	DRN	APP'D	2550 NW 25th Place • Portland, OR. 97210 Phone: (503) 226-3968 Fax (503) 242-2446	NAME	DATE	SERIAL NO.	DRW. NO.
						JBG	08/15/2023		P1.0



FRONT VIEW

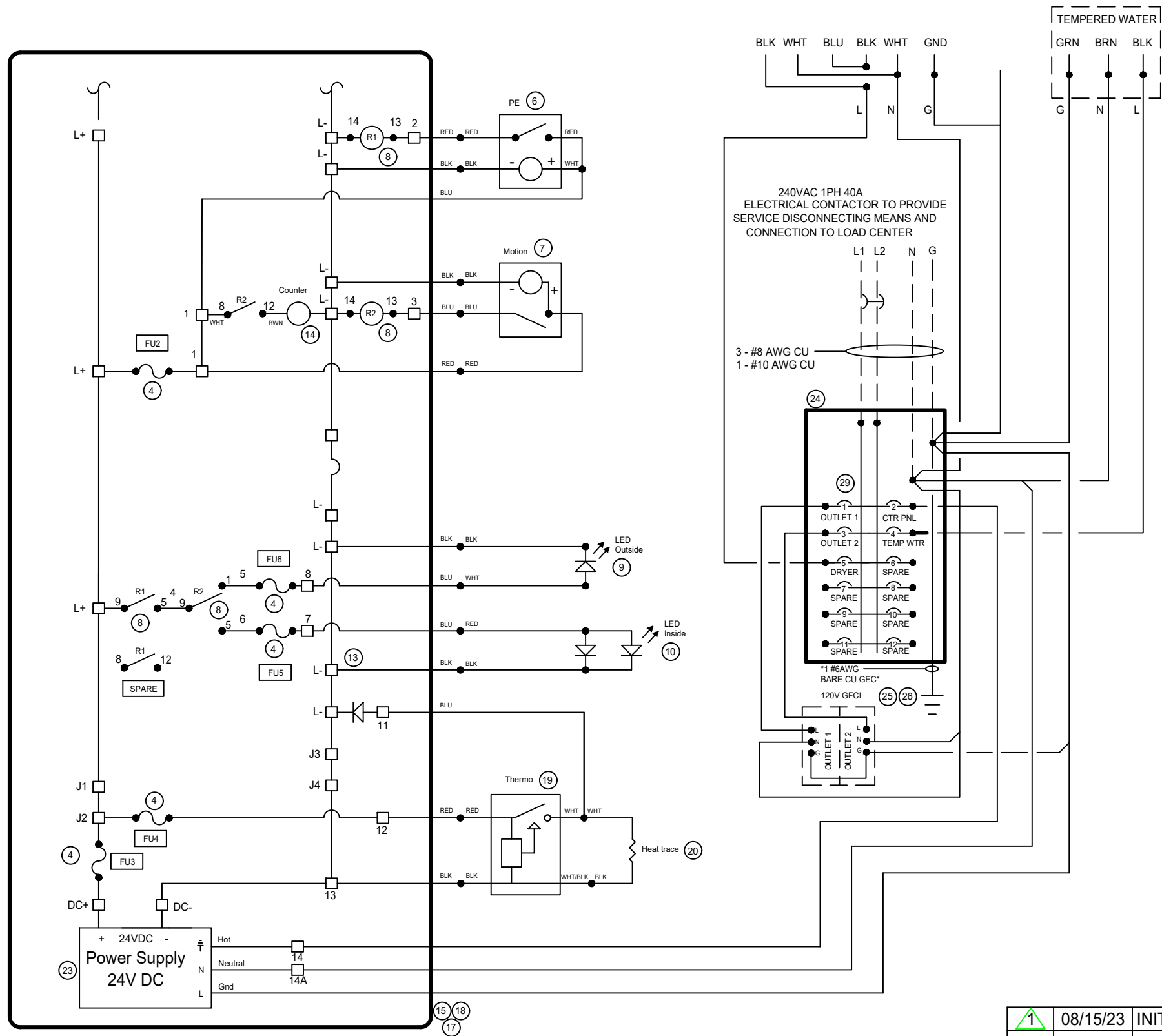


REAR VIEW

BILL OF MATERIAL

ITEM NO.	QTY.	MANUFACTURER NO	DESCRIPTION
1	1	ROYAL 143-1.28	SLOAN - ROYAL 143 FLUSHOMETER, 1.28 GPF, 3-3/4 L, BRASS FINISH
2	1	JR SMITH 0440Y	440 Y W 8" NIPPLE CARRIER - JR SMITH
3	1	2105-W-1-CN-HS	DURA-WARE TOILET W SEAT, 1 1/2" SS 316 CL
4	2	VIEGA 77022	3/4" ELBOW 90 DEG
5	2	VIEGA 79245	1" MALE ADAPTER
6	2	VIEGA 77027	1" ELBOW 90 DEG
7	1	VIEGA 79315	3/4 FEMALE ADAPTER
8	1	VIEGA 77412	1" TEE
9	1	VIEGA 77432	1" X 1/2" TEE
10	1	PPP SC-750B	WATER HAMMER ARRESTOR 3/4 NPT MALE
11	1	VIEGA 77437	1" X 3/4" TEE
12	1	BRASSCRAFT OR12X-C	1/2" X 3/8" STRAIGHT STOP VALVE
13	3	ANACO 2010	4" NO-HUB RUBBER COUPLING
14	1	AB&I 00190	4" CAST IRON TEE LOW-PRESSURE
15	1	PASCO 1851	4" BRASS PLUG
16	1	UPBA475B-1	1" BALL VALVE
17	1	AB&I 02142	4" X 2" NO-HUB REDUCER
18	6	ANACO 2006	2" NO-HUB RUBBER COUPLING
19	2	AB&I 00190	2" NO-HUB 90 ELBOW CAST IRON
20	2	VIEGA 79215	1/2" MALE ADAPTER
21	1	VIEGA 77417	COPPER TEE 3/4" X 3/4" X 1/2"
22	1	VIEGA 78152	1" X 3/4" REDUCER
23	1	LEGEND 310-103NL	1/2" THREADED BRASS TEE
24	2	LEGEND 310-043 NL	1/2" THREADED BRASS STREET 90 ELBOW
25	1	4568K175 OR EQUIVALENT	1/2" X 3" THREADED BRASS PIPE NIPPLE
26	1	BRASSCRAFT DR583X-R	1/2" SCREWDRIVER STOP
27	1	VIEGA 79310	3/4 X 1/2 FPT" FEMALE FITTING
28	1	PASCO 2152	3/4" PLASTIC CAPS
29	1	LEGEND 107-154NL	1/2" BOILER DRAIN
30	2	LEGEND 310-183 NL	1/2" BRASS PLUG
31	1	LASCO 450-010	1" PVC PLUG
32	1	PPP P2-500	TRAP PRIMER
33	7	5175K126 OR EQUIVALENT	TUBING, TYPE L, 1 TUBE SIZE, COPPER
34	5	5175K125 OR EQUIVALENT	TUBING, TYPE L, 3/4 TUBE SIZE, COPPER
35	2	5175K122 OR EQUIVALENT	TUBING, TYPE K, 1/2 TUBE SIZE, COPPER
36	3	1910N12 OR EQUIVALENT	2" SCH-40 NO-HUB PIPE CAST IRON

1	08/15/23	INITIAL ISSUE	JBG	MADDEN FABRICATION	CAPITOLA CA,				
					PLUMBING DETAIL				
REV	DATE	DESCRIPTION	DRN	APP'D	2550 NW 25th Place • Portland, OR. 97210 Phone: (503) 226-3968 Fax (503) 242-2446	NAME JBG	DATE 08/15/2023	SERIAL NO.	DRW. NO. P2.0



FUSE/BREAKER DESCRIPTION

FU1	SOLAR POWER
FU2	PE/MOTION
FU3	DC POWER
FU4	HEAT TRACE
FU5	INSIDE LED LIGHT
FU6	OUTSIDE LED LIGHT
FU7	INSIDE LED LIGHT
FU8	OUTSIDE LED LIGHT
CB8	MAIN 24VDC BREAKER
CB9	PV1 BREAKER
CB10	PV2 BREAKER
CB11	PV3 BREAKER

TERMINAL DETAIL

Sol+
Sol+
Sol-
Sol-
L -
L -
L -
L -
L +
L +
1
1
1
2
3
3
7
8
11
12
13
13
14
14A
15
16
J1
J2
J3
J4

BILL OF MATERIAL

ITEM	QTY	DESCRIPTION	MFG.
1	1 - 3	Grape Solar 160W PV Module (or equal)	GRAPE SOLAR
2	1 - 3	MC 4 Cable 30' #10AWG	RLH INDUSTRIES
3	ONE	SS-MPPT-15L SOLAR CHARGE CONTROLLER	MORNINGSTAR CORP
4	5-7	6A-600V Fuse LPCC-6	Buss
5	TWO	MK 8A24 LTP Sealed AGM Battery	MK Battery
6	ONE	24V Photocell EM-24A2	Watt Stopper
7	ONE	Occupancy Sensor FSP-202	Watt Stopper
8	TWO	24V DC relay 782-2C-24D	Automation Direct
9	ONE	24V LED Light Rope, White 3W/Ft x 4ft	Imtra Corp
10	TWO	24", 24V, 5W LED Blue Actinic	Current USA
11	ONE	Battery system monitor RM-1	Morningstar
12	ONE	RJ-11 Meter Cable	VARIOUS
13	ONE	Ground Bus 44CONN-AL	ITE
14	ONE	1A788 24VDC Electromechanical Counter	Dayton
15	ONE	NEMA1 Enclosure 20"x20" 20206-1	BENC
16	ONE	6ga Battery Harness cable	ALLBATTERY
17	Lot	14ga Cu wire THHN-14-19STR-CU	VARIOUS
18	Lot	10ga Cu wire Varies	VARIOUS
19	ONE	Solstat 2-10 Solid State Thermostat	ENGENITY
20	ONE	Heat trace - 10 ft, 24V, 3W/ft Kompensator	HEATLINE
21	ONE	15 Amp, 150V DC Breaker	ALTEC CORP
22	ONE	63 Amp, 125V DC Breaker	ALTEC CORP
23	ONE	PULS Dimension CP10.241 Power Supply	PULS
24	ONE	LOAD CENTER, 125A BR48L125SP	EATON
25	ONE	Approved UFER ground connection to rebar Sht S2.0	BY OTHERS
26	ONE	#6AWG Bare Cu GEC	VARIOUS
27	LOT	6ga Cu wire insulated	VARIOUS
28	1-3	6ga crimp eyelet and mechanical fastener to PV	VARIOUS
29	SIX	20 Amp Breaker Panel BR48L125SP	EATON

Items not shown on schematic

Item	QTY	DESCRIPTION	MFG.
A	Lot	Din Rail 2M - 2 ft	WEIDMULLER
B	EIGHT	Modular Fuse Holder CHCC1DI	BUSS
C	TWO	Relay Pin Base 782-2C-SKT	Automation Direct
D	20	Terminal splice unit	WEIDMULLER
E	TWO	1-5/8" x 1-5/8" x 69" B22SH strut	B-Line or Equal
F	FOUR	3/8" Spring Nut N228	B-Line or Equal
G	FOUR	10-1/2" Shelf Bracket S-205	B-Line or Equal
H	ONE	NEMA1 Panel 20"x20" AW2020	BENC

Jumper Power Configuration

	J1 to J2	J3 to J4
Solar Powered only (3 panels)	Yes	Yes
AC Power Only	Yes	Yes
Hybrid AC/Solar Powered (1-2 panels)	No	No

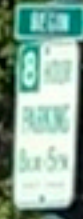
REV	DATE	DESCRIPTION	DRN	APP'D
	08/15/23	INITIAL ISSUE	JBG	



2550 NW 25th Place Portland, OR 97210
Phone: (503) 226-3968 Fax (503) 242-2446

CAPITOLA CA,
ELECTRICAL SCHEDMATIC

NAME	DATE	SERIAL NO.	DRW. NO.
JBG	08/15/2023		E1.0





HAND WASH







LOVE THE GAME

PUBL



LOVE THE GAME

ALL-USER RESTROOM



MONROVIA NOW

NEWS AND OBSERVATIONS ABOUT MONROVIA, CALIFORNIA

News: brad.haugaard@gmail.com • [Restaurants](#) • [Library Catalog](#) • [Library Activities](#) • [History](#) • [Facebook / X/Twitter / RSS](#)

Calling Artists For Park Murals



Lucinda Garcia Park mural.



Example of toilet that will go in Library Park.

The city is looking for artists to paint two murals, one for a wall at the currently-being-renovated Lucinda Garcia Park, and another for the outside of a Portland Loo (a "public restroom facility intended to meet the needs of park users without creating a nuisance"), which will soon be installed at Library Park.

The Lucinda Garcia Park mural should highlight Garcia's contributions and convey the broader story of the Hispanic community in Monrovia. Details: t.ly/bRfp

Friday Afternoon Digest
Enter Email:

Archive

The theme of the Portland Loo should be related to literacy, books, reading, parks, nature or family. For questions contact Tina Cherry at 256-8226 or tcherry@ci.monrovia.ca.us.

- Brad Haugaard

Share this Post:   

Posted by Brad at [9/26/2022](#)

No comments:

Post a Comment



Enter Comment

[Newer Post](#)

[Home](#)

[Older Post](#)

Subscribe to: [Post Comments \(Atom\)](#)

Blog Archive

▶ [2023](#) (610)

▼ [2022](#) (718)

▶ [December](#) (55)

▶ [November](#) (61)

▶ [October](#) (69)

▼ [September](#) (64)

[Council to Discuss Signing Up for Green Energy Option](#)

[What's Playing at Art in the Park Show Saturday](#)

[Fall Youth Sports Starts Oct. 10; Next Neighborhoo...](#)

[Fire Safety Presentation at Next MAP Virtual Commu...](#)

[Monrovia Football Victorious Over South Pasadena](#)

[Weekly Monrovia Coronavirus Count: 40 More Cases, ...](#)

[Monrovia Police: ETB Fraud; Lots of Drugs and Alco...](#)

[Green Care Day Draws 300 to Monrovia Schools](#)

[Dinner at London Gastropub](#)

[Shy and Gorgeous Milo Warms Up As He Gets To Know...](#)

[Coworking Company to Open On Ground Floor of New A...](#)

[Calling Artists For Park Murals](#)

[Children Will Paint a Ford F-150 Truck - and More ...](#)

[A Moment in Monrovia History: Dr. Pottenger, Foun...](#)

[Blazing Temperatures Forecast for Monday Through W...](#)

[School Board to Consider Updated Shade Area for Ca...](#)

[City Offering Free Countertop Composter; Rebates o...](#)

[Hazardous Waste Collection Oct. 29 at City Yard](#)

[Weekly Monrovia Coronavirus Count: 55 More Cases, ...](#)

[MAFA Oct. 1 'Art In the Park' Show Will Feature Ar...](#)

[Monrovia School District Will Pay Fees for Advance...](#)

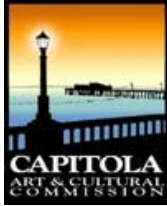
[Monrovia Police: Driving-Under-the-Influence Incid...](#)

[Maryknoll Grounds Being Transformed to Water-Savin...](#)

[First Presbyterian Church Celebrates 100 Years](#)

[Dinner at Thai Thyme](#)

[Mischiefs Is a Barrel of Laughs](#)



Item #: 8.b

ART & CULTURAL COMMISSION AGENDA REPORT

MEETING OF November 14, 2023

FROM: Staff
DATE: October 30, 2023
SUBJECT: Hammer & Silva Building Mosaic Public Art

Recommended Action: Receive Staff report and consider Public Art project.

BACKGROUND

The Art & Cultural Commission has the responsibility to advise the City Council as to the allocation of public funds for the acquisition by purchase, gift, or otherwise; of works of art for the City. Up to twenty percent of the percent for Public Art may be expended on program administration, project management and community outreach activities as necessary for the administration of the program.

The Art & Cultural Commission was approached with a Public Art inquiry located on private property, the wall along the side of the My Thai Beach located in the Hammer & Silva Building. At the October 2023 regular meeting the Commission requested clarity on if the building owners intent to donate the wall as a site or if they are also donating the commissioned art work.

DISCUSSION

The wall along the side of the My Thai Beach located in the Hammer & Silva Building would comply with the definition of a public place as defined in the Public Art Code 2.58.020 B. "Public Place" means city or privately owned land or buildings which are open to the general public on a regular basis.

If the Commission were to initiate the process of Public Art for this public place it would be subject to 2.58.100 Review of application for acceptance of public art donated to the city. The process as outlined in the code:

- A. The art and cultural commission shall convene an art selection panel to review the proposed public art, using adopted public art evaluation criteria.
- B. Upon recommendation of the art selection panel, the public art application shall be reviewed by the art and cultural commission.
- C. Following the review, the art and cultural commission shall forward the public art application to the city council, which shall have the sole authority to accept, reject or conditionally accept the donation. (Ord. 869 § 1, 2004)

FISCAL IMPACT

None

ATTACHMENT

Report Prepared By: Nikki Bryant LeBlond
Recreation Division Manager