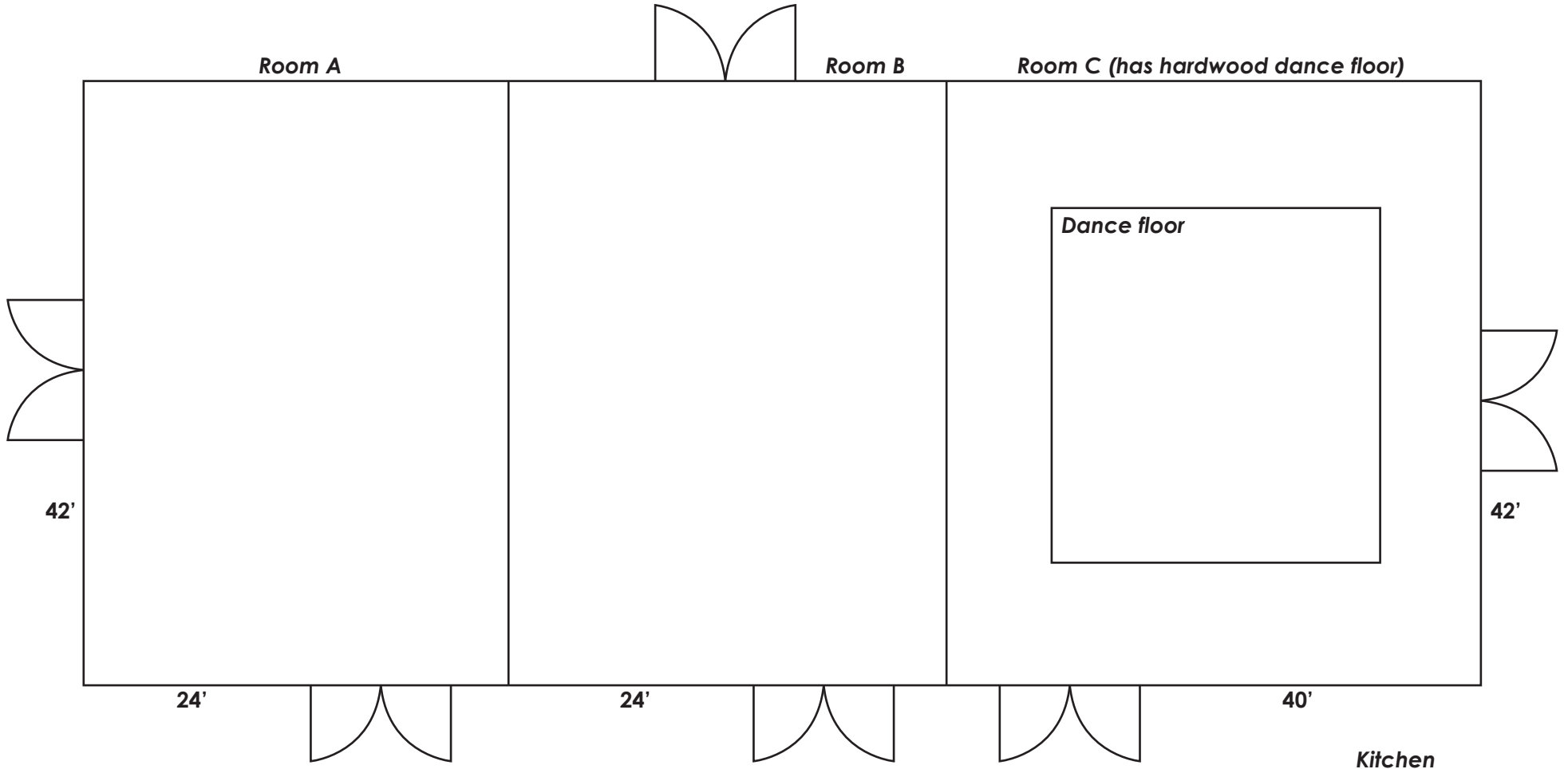


Capitola Community Center - FLOOR PLAN
 4400 Jade Street, Capitola, CA 95010
 (831) 475-5935

Name of Renter & Time: _____ Phone #: _____ Date of Event: _____



PLEASE NOTE: Doors cannot be blocked by chairs or tables.

- **Round Tables:** 15 6-foot diameter tables available for use. They seat 7-8 people.
- **Rectangular Tables:** 9 rectangular tables (30" x 5' long) and 6 rectangular tables (30" x 6' long).
- **Square card tables:** 5, 33-34in. square card tables.
- **Chairs:** Approximately 160 chairs available.

Square Footage: 3,520



Building Entrance

NOTES