

Capitola Wharf Enhancement Project Community Meeting

June 7, 2023



CWEP Community Meeting

Agenda



Introductions

Wharf Resiliency and Public Access Improvement Project

Capitola Wharf Enhancement Project

- Fundraising
- RRM Presentation
- Breakout Groups

Next Steps

CWEP Community Meeting

Introductions



City of Capitola

- Jessica Kahn
- Kailash Mozumder

RRM Design

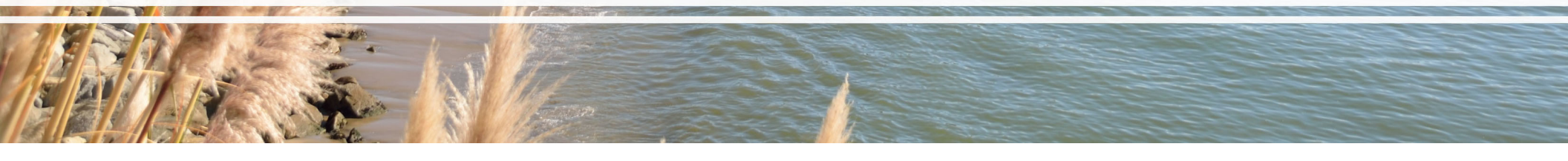
- Mike Sherrod
- Morgane Staake
- Debbie Rudd

CWEP Team

- Gerry Jensen
- Gayle Ortiz

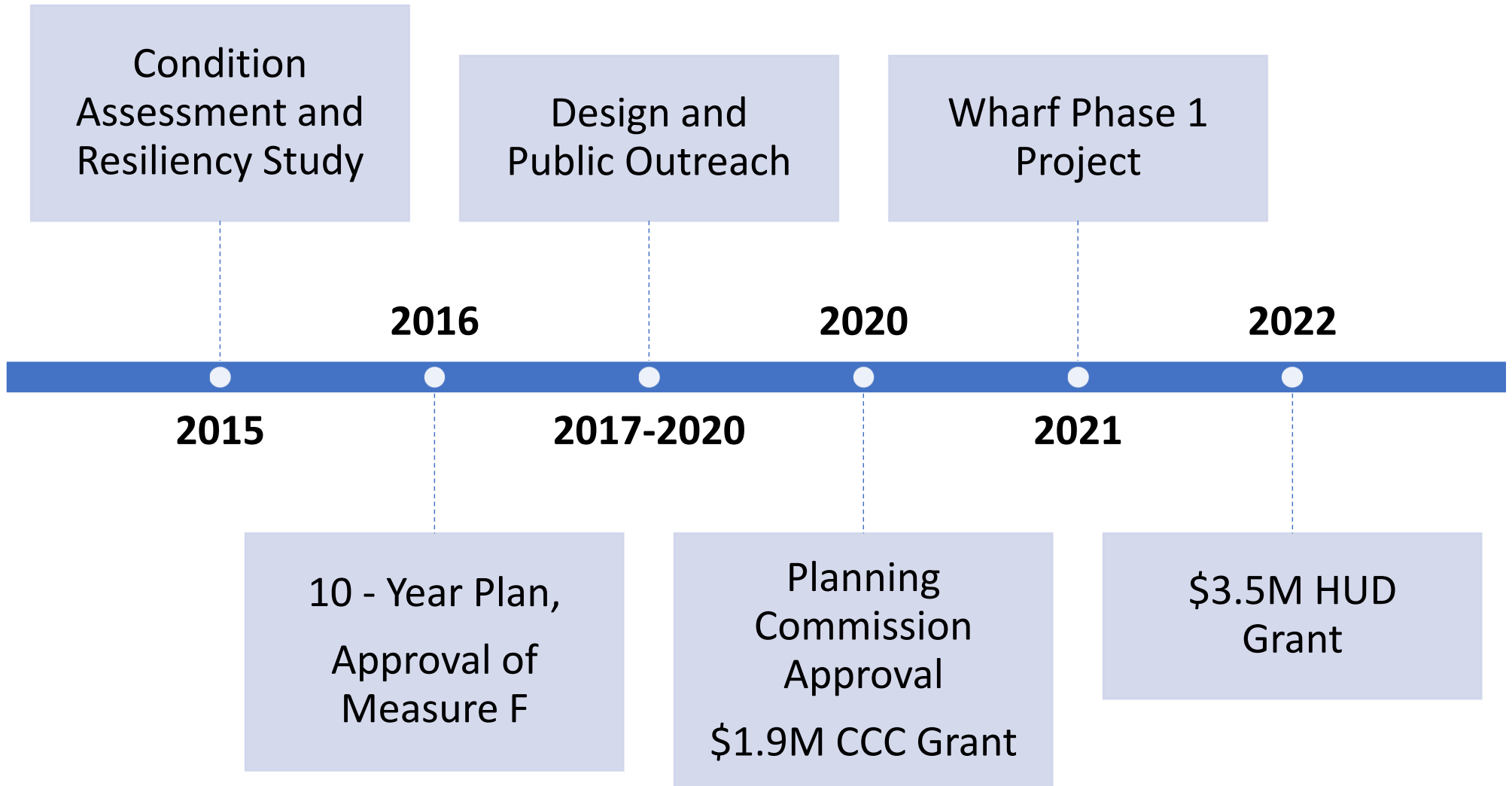


Capitola Wharf Resiliency and Public Access Improvement Project



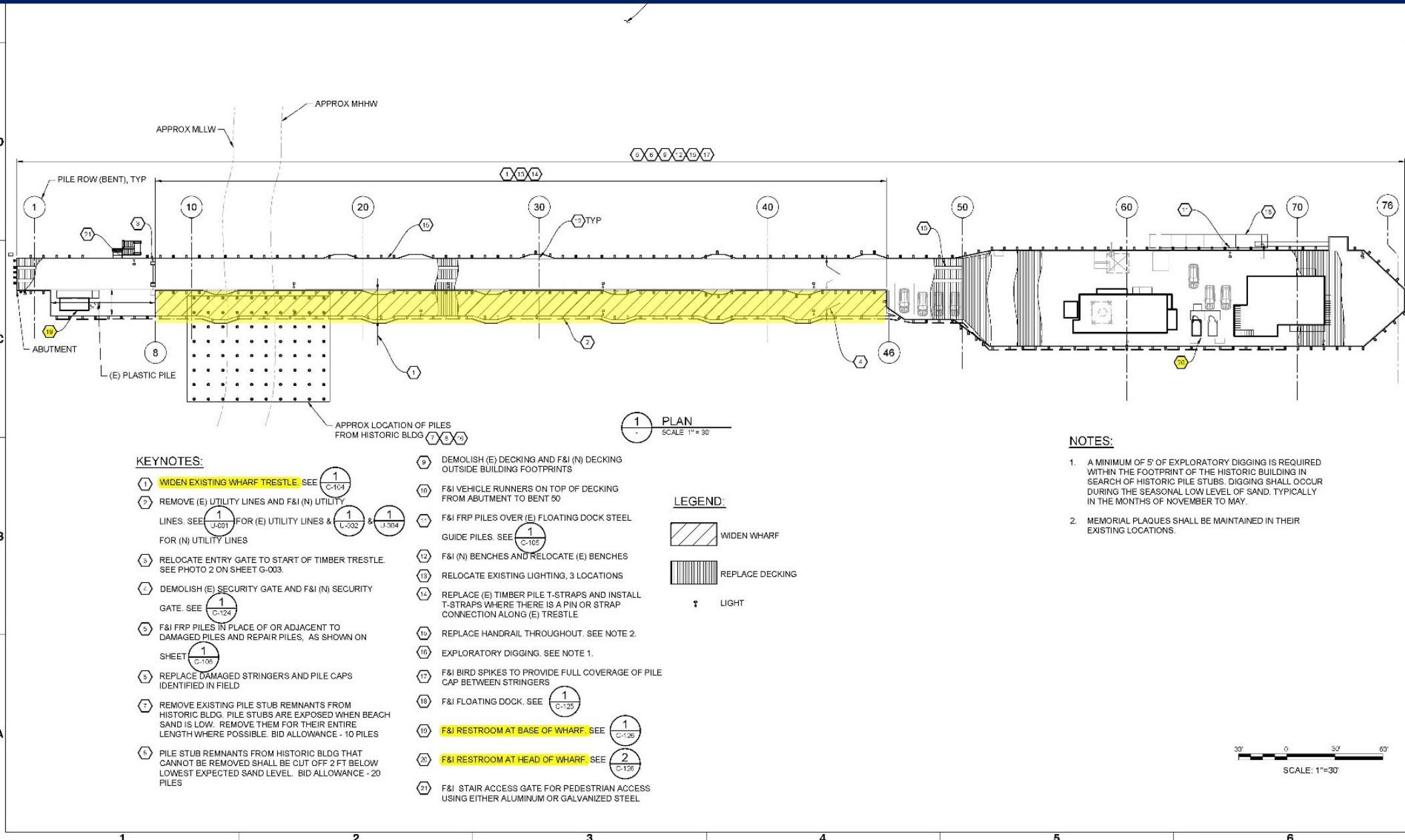
Capitola Wharf Resiliency Project

Project Background



Capitola Wharf Resiliency Project

Project Scope



1 PLAN
SCALE 1" = 30'

KEYNOTES:

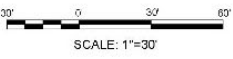
- ① **WIDEN EXISTING WHARF TRESTLE.** SEE ① C-104
- ② REMOVE (E) UTILITY LINES AND F&I (N) UTILITY LINES. SEE ① J-001 FOR (E) UTILITY LINES & ① L-002 & ① J-004 FOR (N) UTILITY LINES
- ③ RELOCATE ENTRY GATE TO START OF TIMBER TRESTLE. SEE PHOTO 2 ON SHEET G-003.
- ④ DEMOLISH (E) SECURITY GATE AND F&I (N) SECURITY GATE. SEE ① C-124
- ⑤ F&I FRP PILES IN PLACE OF OR ADJACENT TO DAMAGED PILES AND REPAIR PILES, AS SHOWN ON SHEET ① C-106
- ⑥ REPLACE DAMAGED STRINGERS AND PILE CAPS IDENTIFIED IN FIELD
- ⑦ REMOVE EXISTING PILE STUB REMNANTS FROM HISTORIC BLDG. PILE STUBS ARE EXPOSED WHEN BEACH SAND IS LOW. REMOVE THEM FOR THEIR ENTIRE LENGTH WHERE POSSIBLE. BID ALLOWANCE - 10 PILES
- ⑧ PILE STUB REMNANTS FROM HISTORIC BLDG THAT CANNOT BE REMOVED SHALL BE CUT OFF 2 FT BELOW LOWEST EXPECTED SAND LEVEL. BID ALLOWANCE - 20 PILES
- ⑨ DEMOLISH (E) DECKING AND F&I (N) DECKING OUTSIDE BUILDING FOOTPRINTS
- ⑩ F&I VEHICLE RUNNERS ON TOP OF DECKING FROM ABUTMENT TO BENT 50
- ⑪ F&I FRP PILES OVER (E) FLOATING DOCK STEEL GUIDE PILES. SEE ① C-105
- ⑫ F&I (N) BENCHES AND RELOCATE (E) BENCHES
- ⑬ RELOCATE EXISTING LIGHTING, 3 LOCATIONS
- ⑭ REPLACE (E) TIMBER PILE T-STRAPS AND INSTALL T-STRAPS WHERE THERE IS A PIN OR STRAP CONNECTION ALONG (E) TRESTLE
- ⑮ REPLACE HANDRAIL THROUGHOUT. SEE NOTE 2.
- ⑯ EXPLORATORY DIGGING. SEE NOTE 1.
- ⑰ F&I BIRD SPIKES TO PROVIDE FULL COVERAGE OF PILE CAP BETWEEN STRINGERS
- ⑱ F&I FLOATING DOCK. SEE ① C-125
- ⑲ **F&I RESTROOM AT BASE OF WHARF.** SEE ① C-126
- ⑳ **F&I RESTROOM AT HEAD OF WHARF.** SEE ② C-126
- ㉑ F&I STAIR ACCESS GATE FOR PEDESTRIAN ACCESS USING EITHER ALUMINUM OR GALVANIZED STEEL

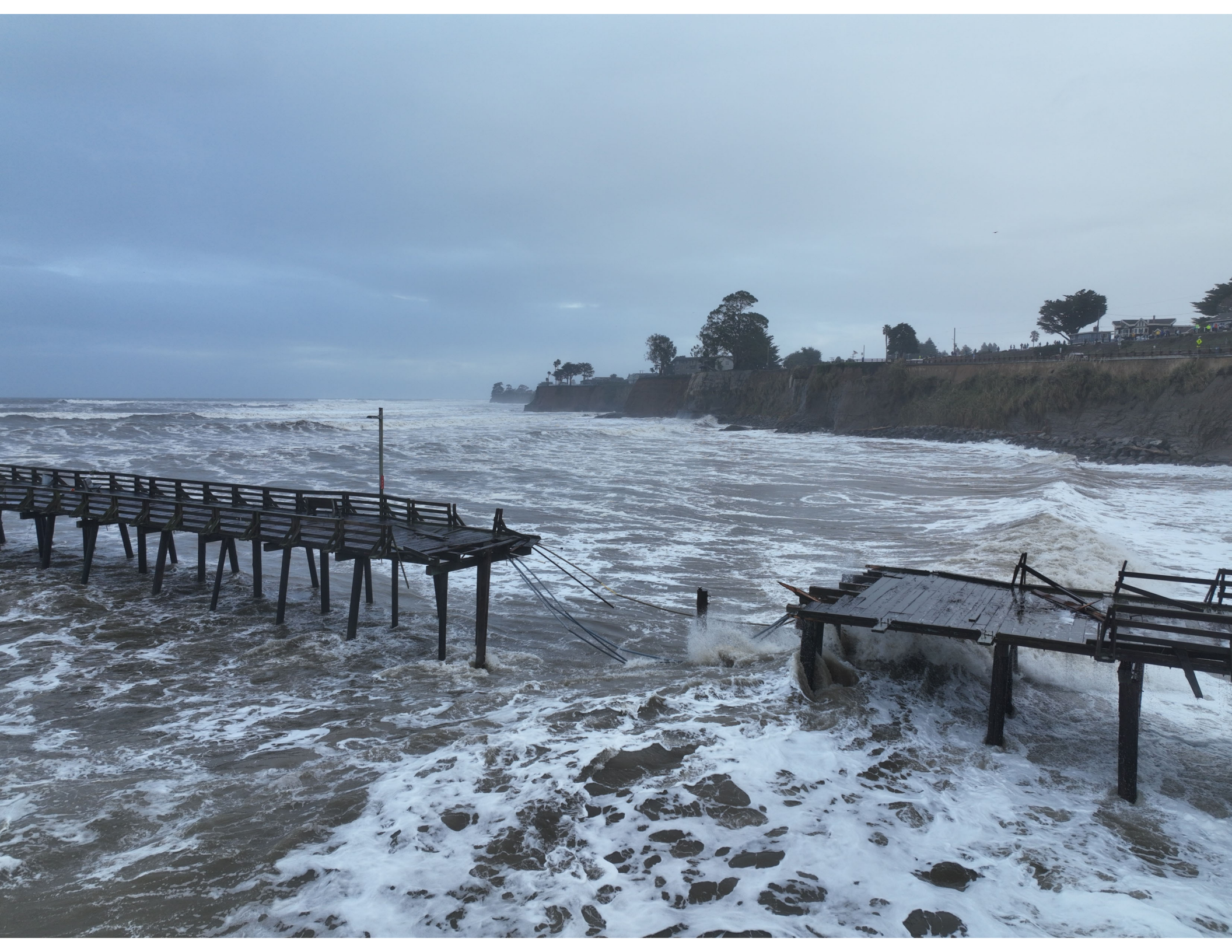
LEGEND:

- WIDEN WHARF
- REPLACE DECKING
- LIGHT

NOTES:

1. A MINIMUM OF 5' OF EXPLORATORY DIGGING IS REQUIRED WITHIN THE FOOTPRINT OF THE HISTORIC BUILDING IN SEARCH OF HISTORIC PILE STUBS. DIGGING SHALL OCCUR DURING THE SEASONAL LOW LEVEL OF SAND, TYPICALLY IN THE MONTHS OF NOVEMBER TO MAY.
2. MEMORIAL PLAQUES SHALL BE MAINTAINED IN THEIR EXISTING LOCATIONS.





Capitola Wharf Resiliency Project

Project Schedule



8-9 Months Construction

Spring
2023
Project
Bid

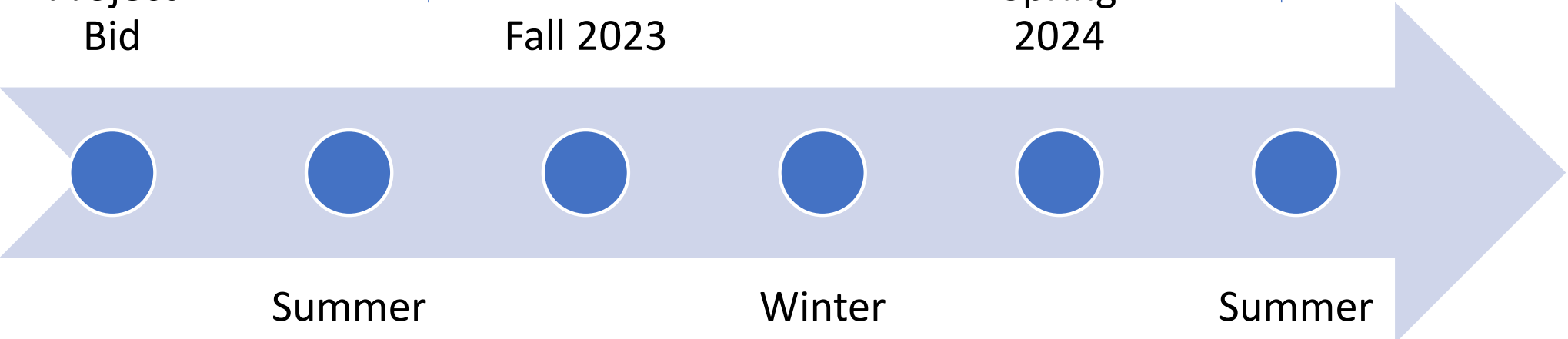
Fall 2023

Spring
2024

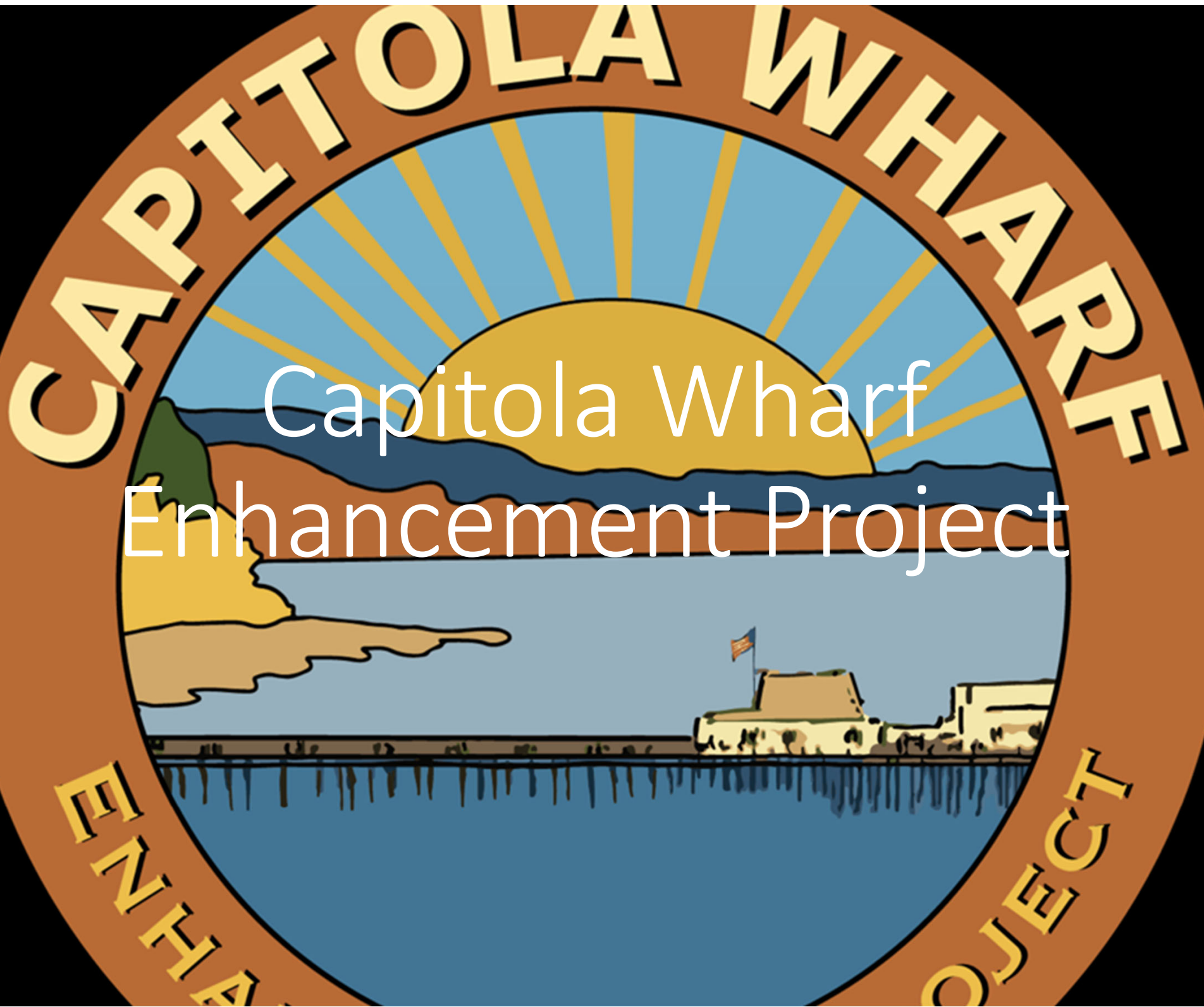
Summer
2024
Contract
Award

Winter
2024

Summer
2024
Wharf
Opening

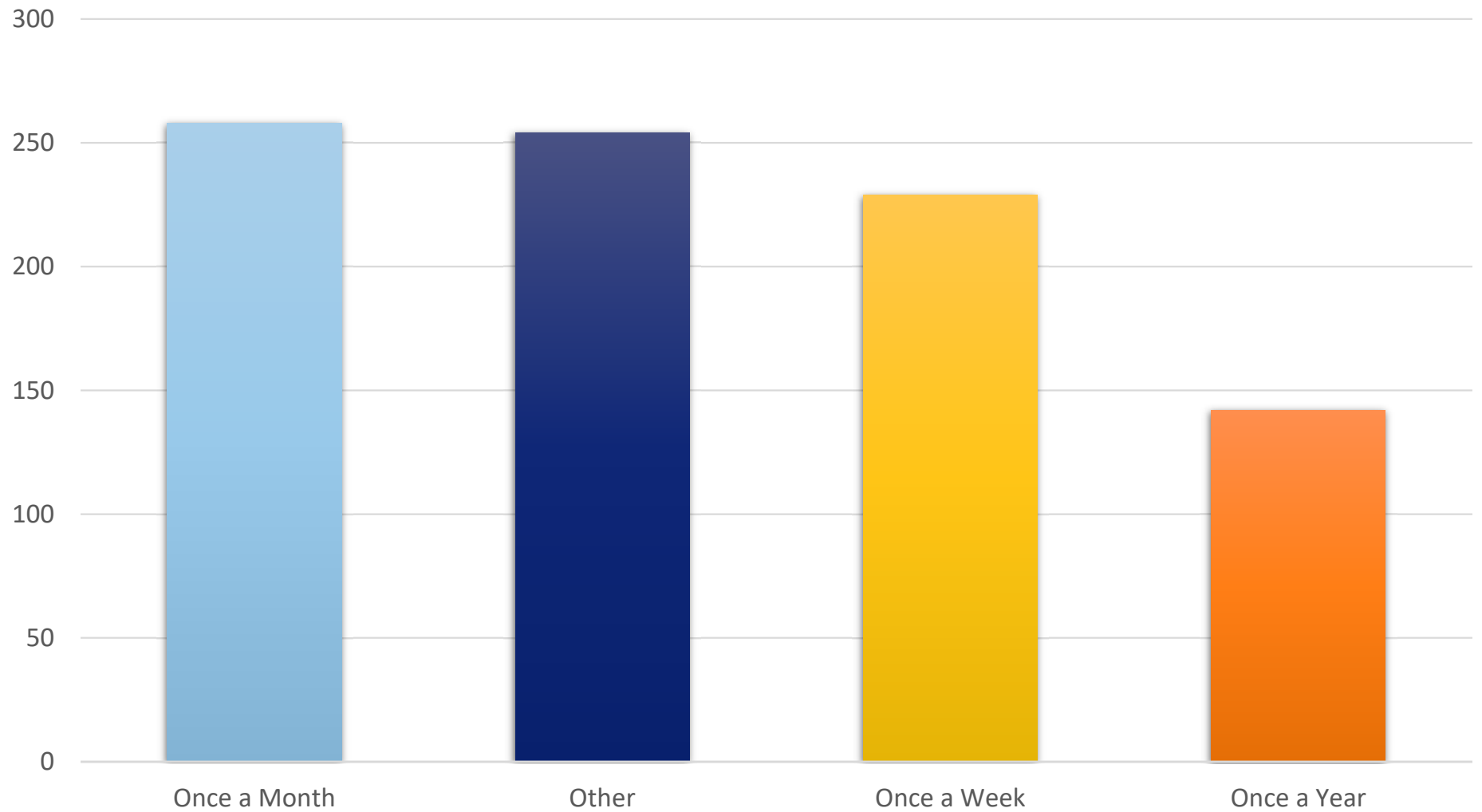




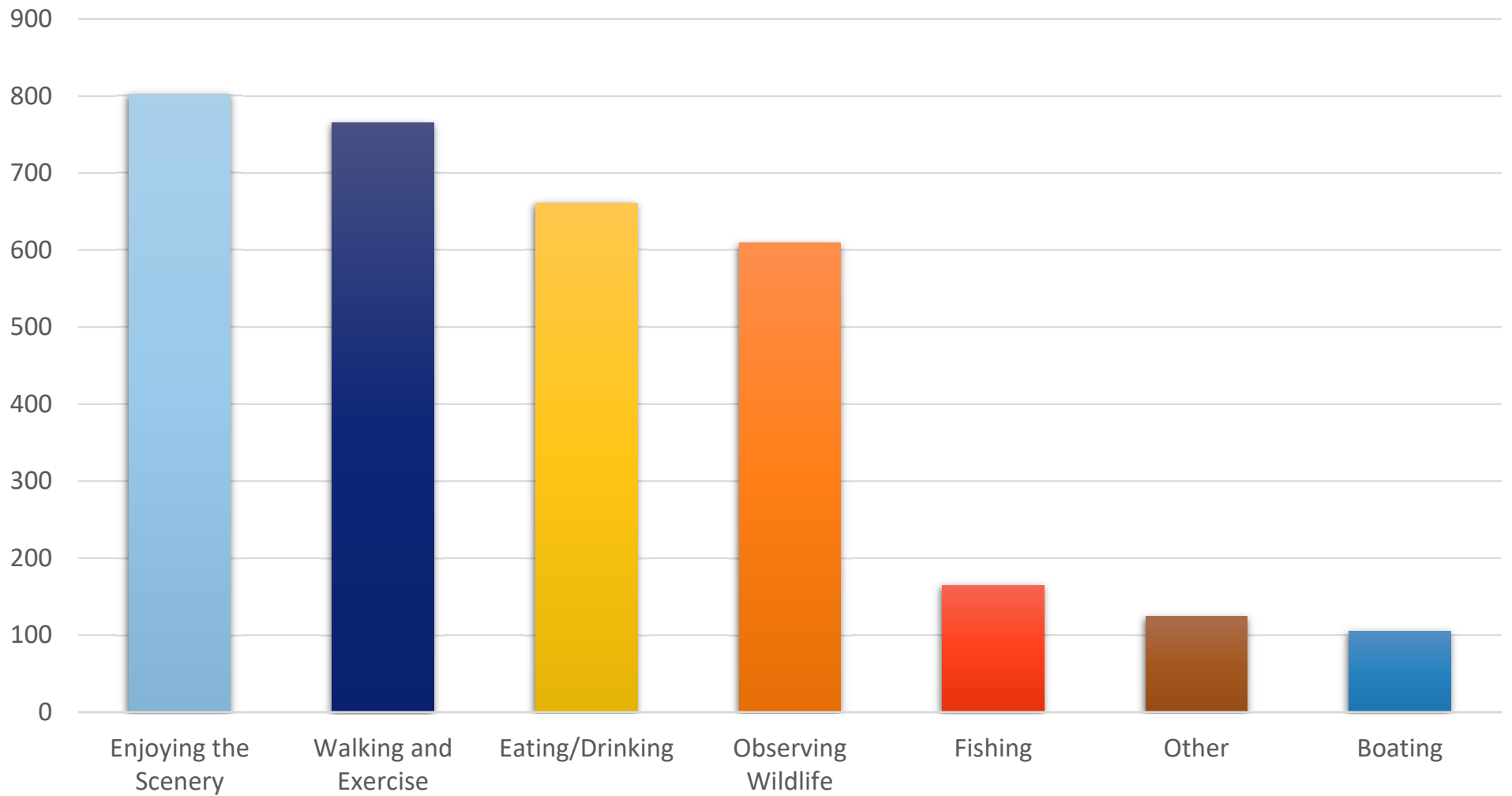


Capitola Wharf Enhancement Project

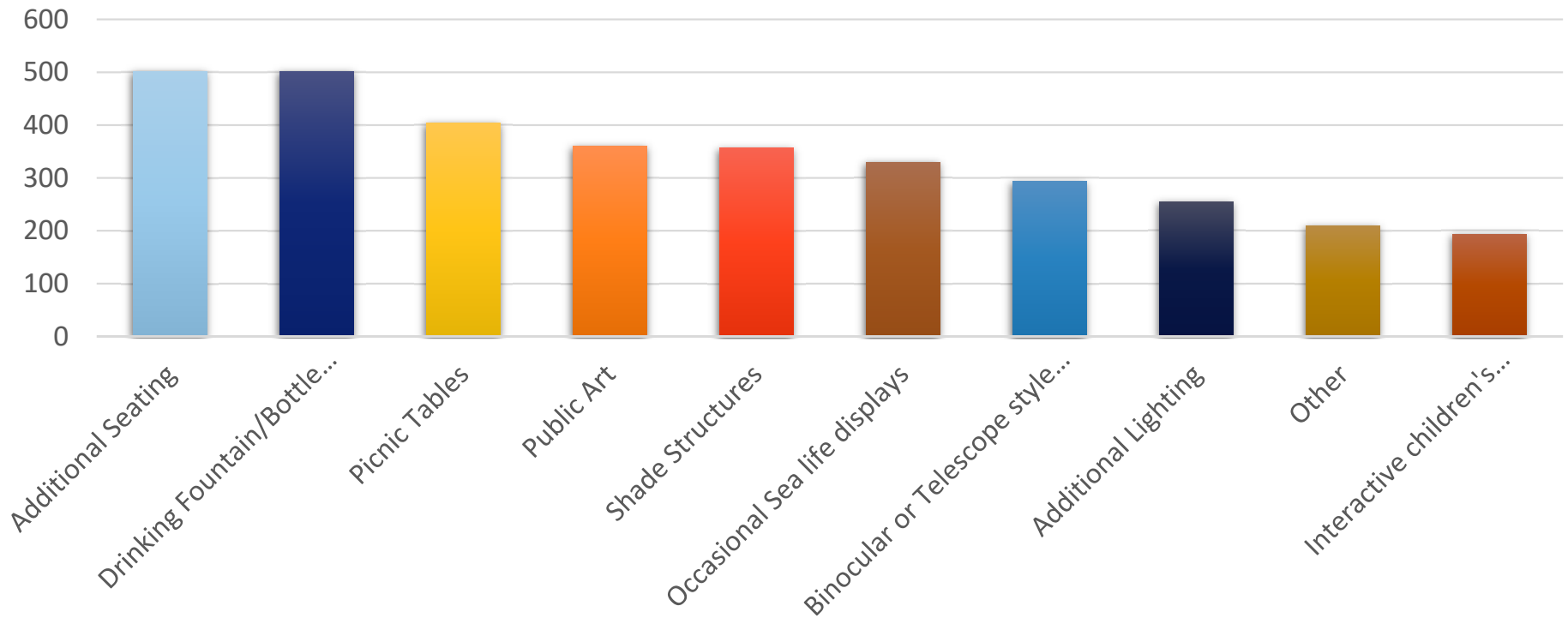
How often did you visit the Capitola Wharf when it was open?



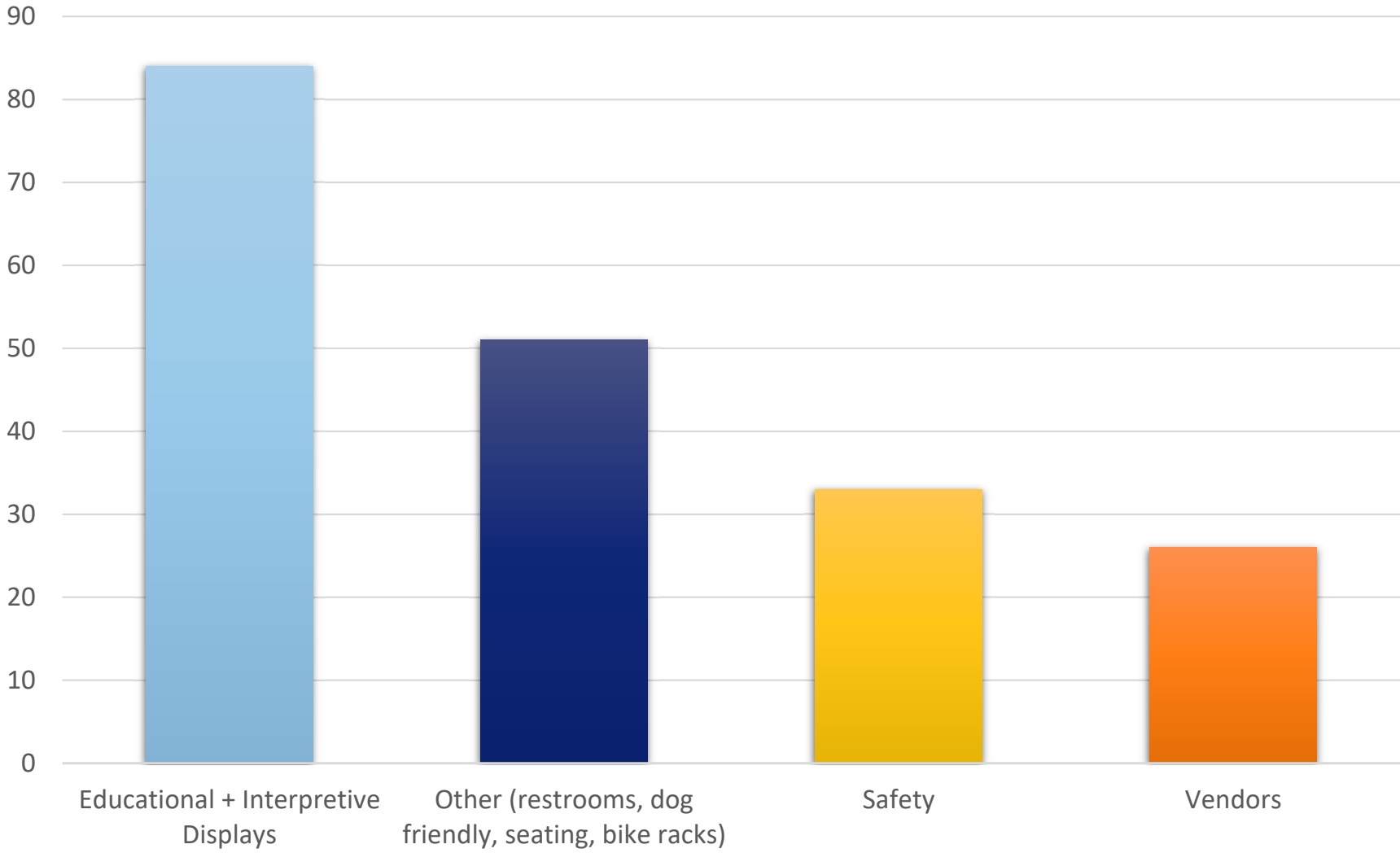
What activities do you enjoy during your visits to the Capitola Wharf?



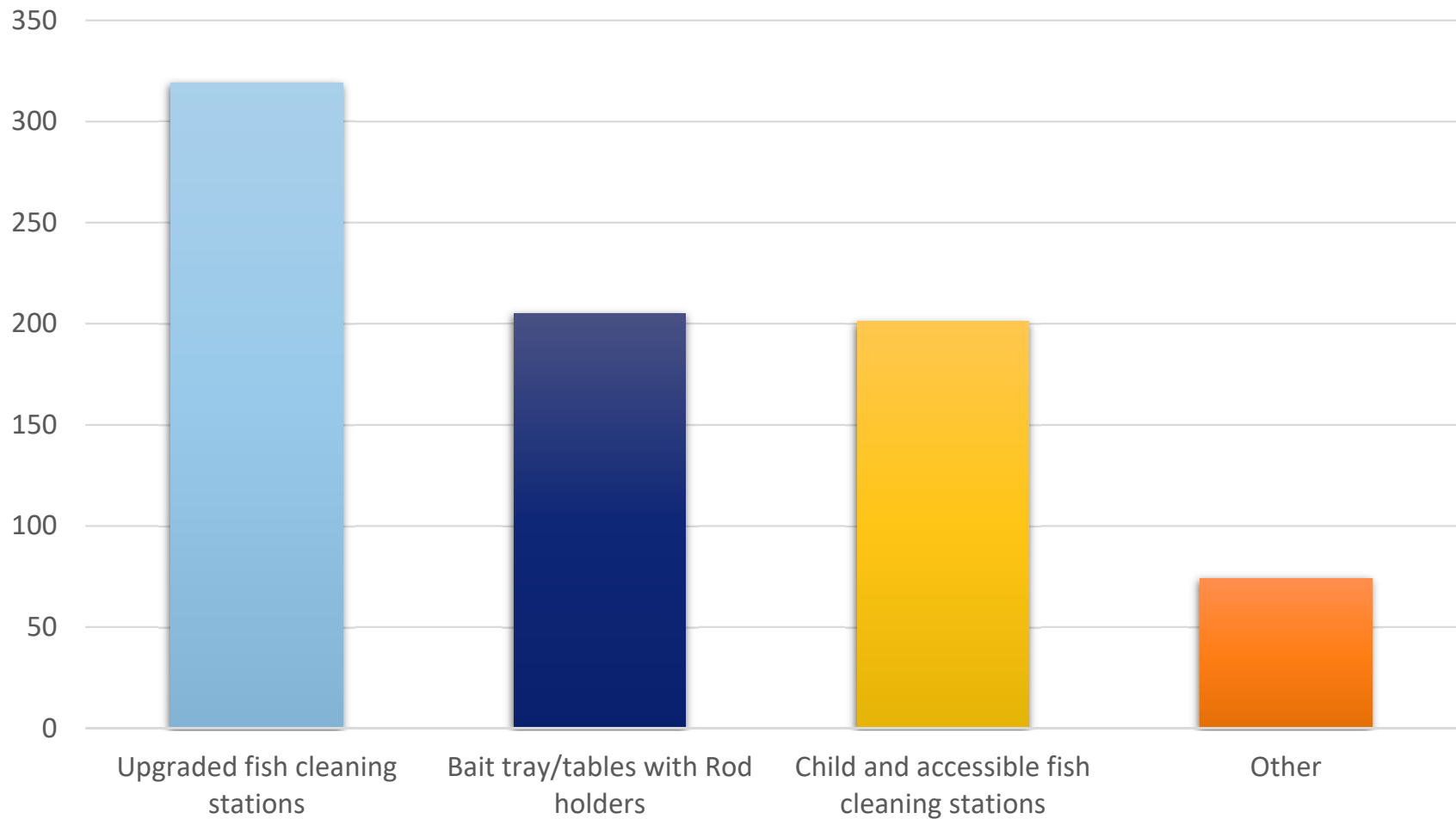
Which amenities would you like to see added or improved on the Capitola Wharf?



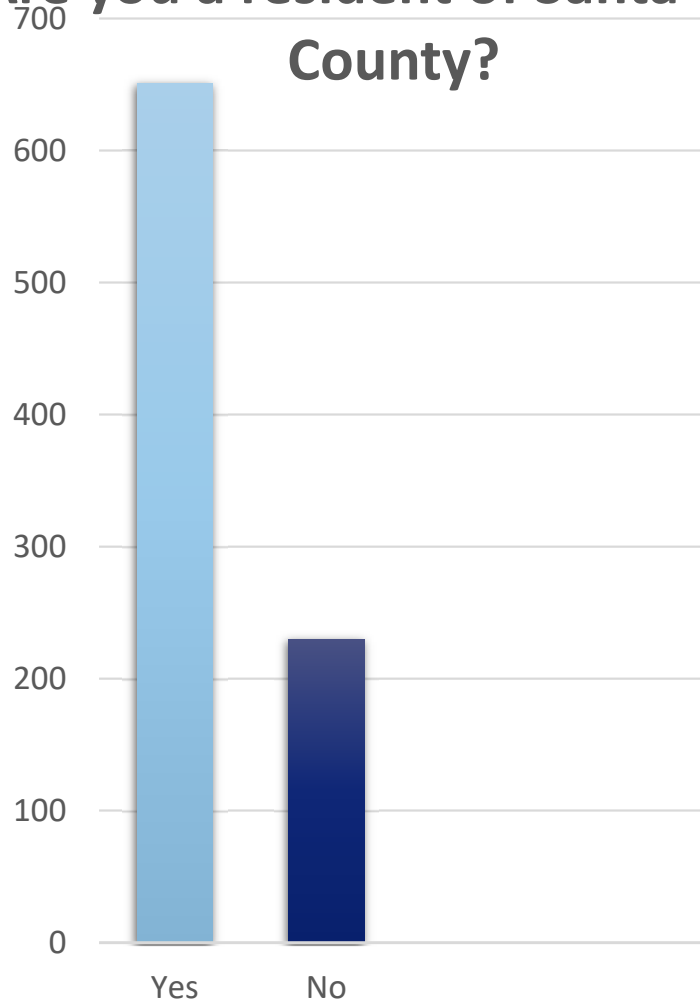
If you visit the Capitola Wharf with children, what would you like to see added?



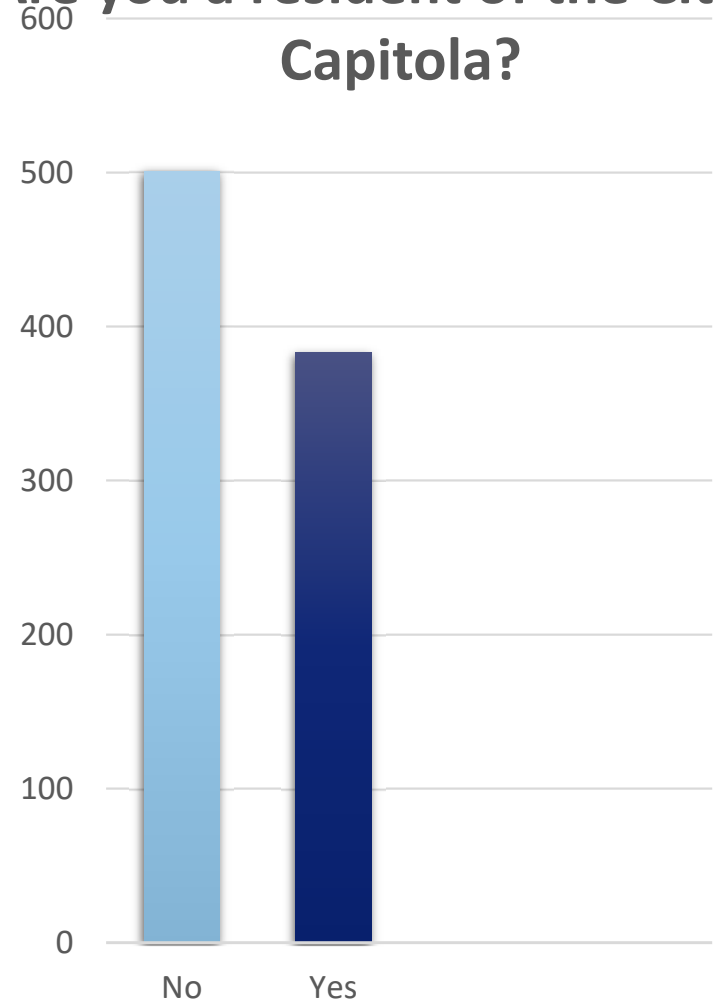
Fishing is one of the most popular activities on the Capitola Wharf, what upgrades to fishing would you like to see?

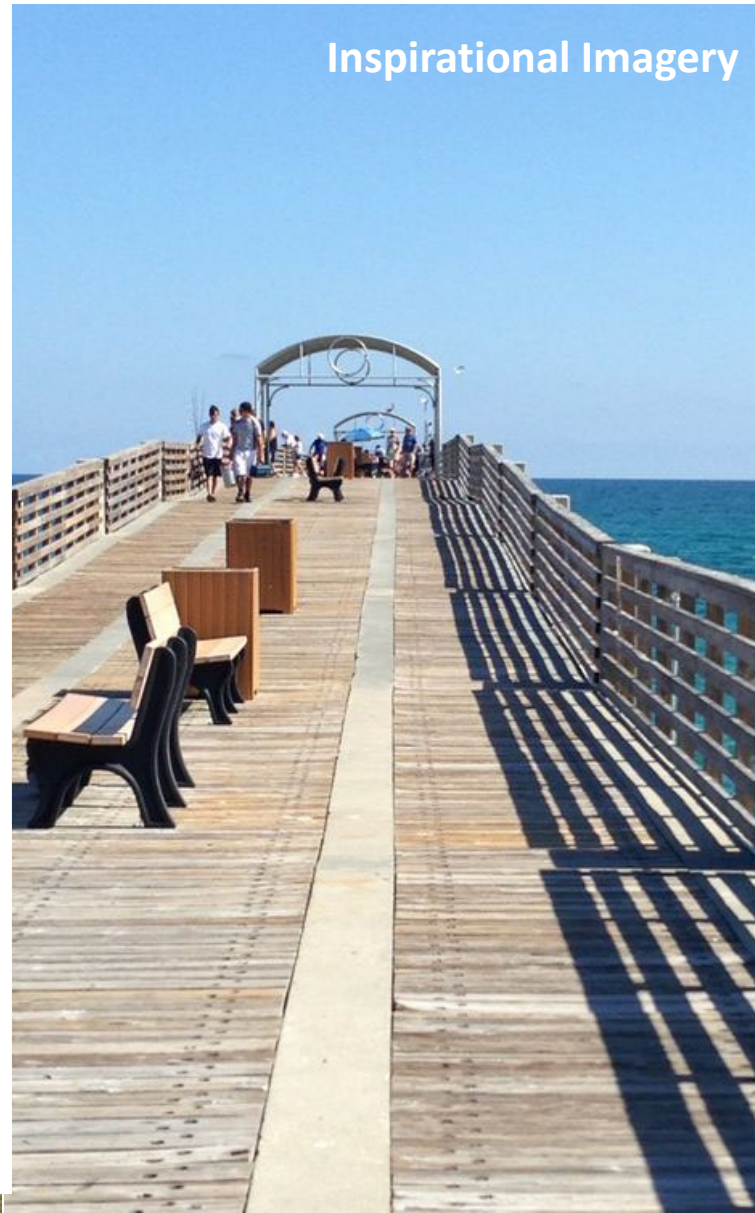
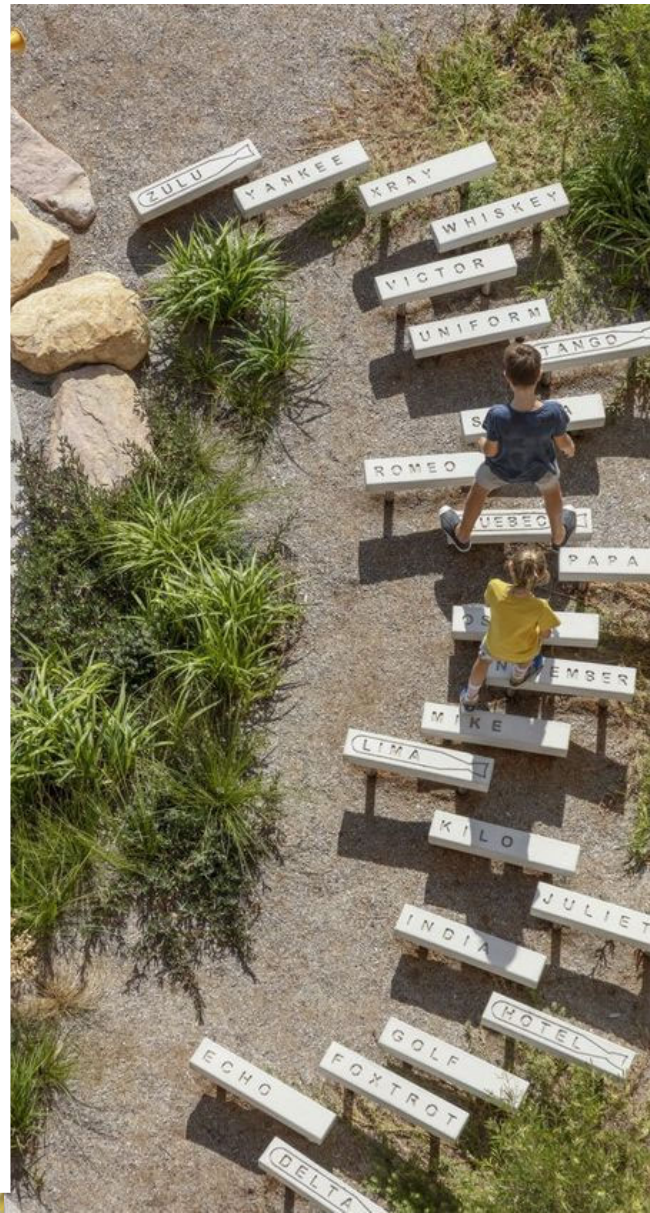


Are you a resident of Santa Cruz County?

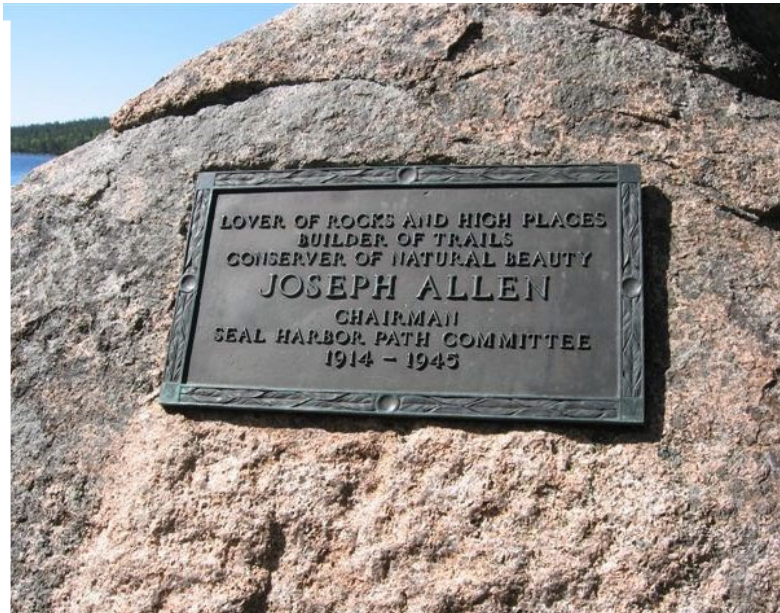


Are you a resident of the City of Capitola?

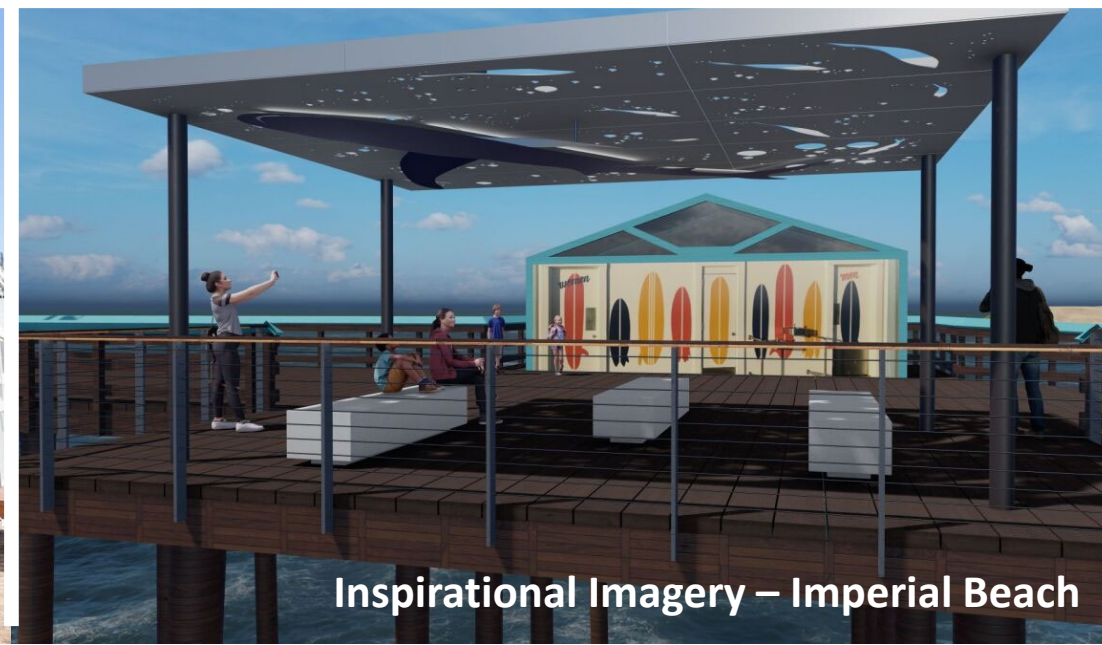
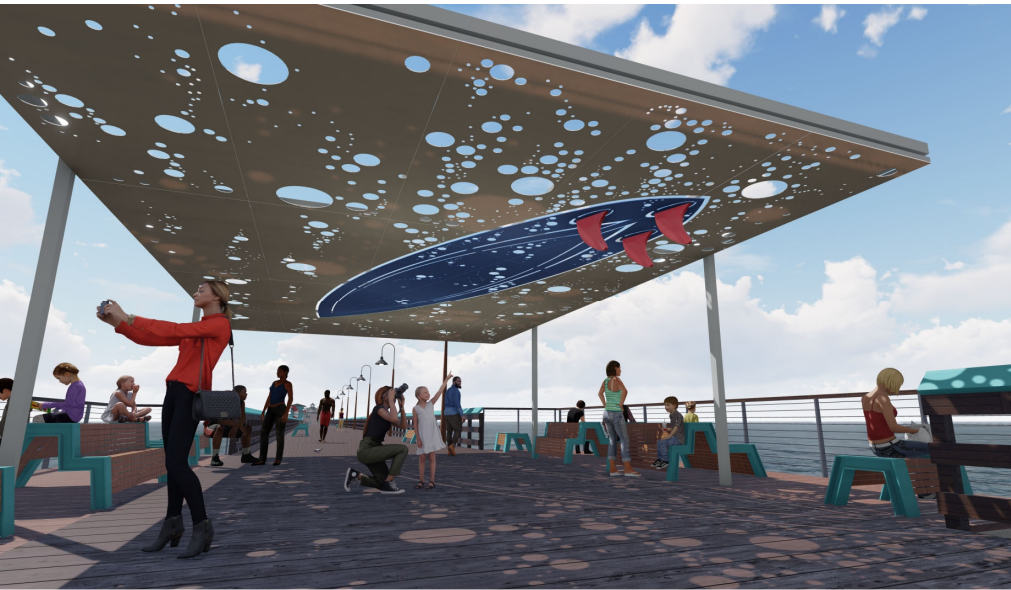




Inspirational Imagery



Inspirational Imagery



Inspirational Imagery – Imperial Beach



Inspirational Imagery – Avila Beach



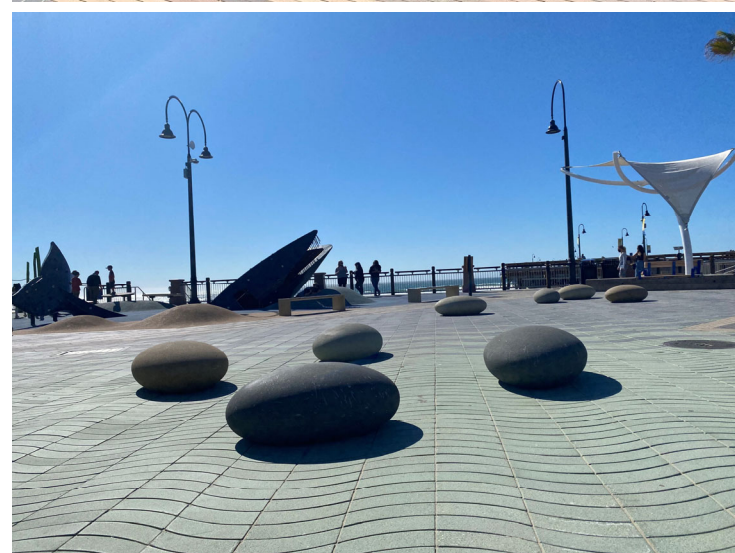
Inspirational Imagery – Twin Lakes Beach

Inspirational Imagery – Pismo Beach





Inspirational Imagery – Pismo Beach



Inspirational Imagery – Pismo Beach



Inspirational Imagery – Pismo Beach

LET'S UPDATE THE WHARF --- PICK YOUR FAVORITE STYLE FOR CAPITOLA

TRADITIONAL
MISSION



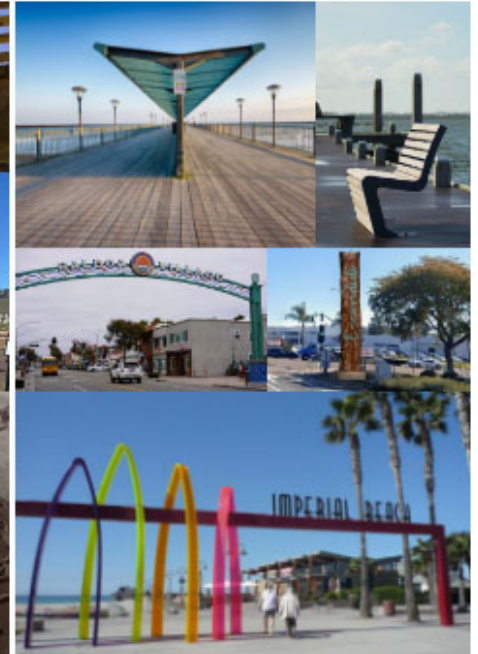
WHIMSICAL
COLORFUL + ARTISTIC



COASTAL



MODERN-ISH



OTHER

ESSENCE OF CAPITOLA

(THREE WORDS THAT DESCRIBE CAPITOLA TO YOU)

IDEAS OR ISSUES WITH THE WHARF TODAY?



CAPITOLA WHARF ENHANCEMENT PROJECT
CITY OF CAPITOLA



- Capitola Public Works
(831) 475-7300
CapitolaDPW@ci.capitola.ca.us

Thank you!

- CWEP
Gerry Jensen
mrgerryjensen@gmail.com