

Capitola Trestle



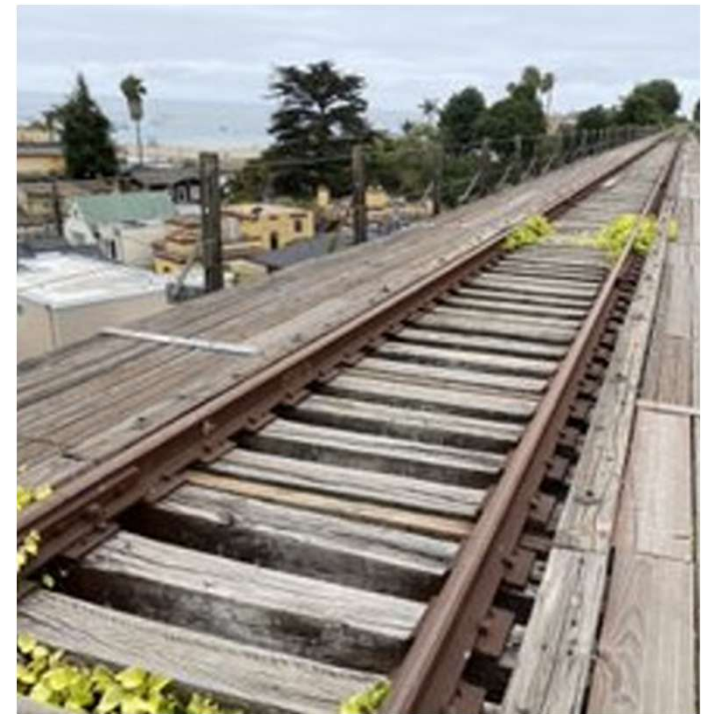
Capitola Trestle/Soquel Creek Crossing

- A bicycle and pedestrian bridge cannot be attached to the existing Capitola Trestle
- Insufficient right-of-way to construct a separate trail bridge
- Consider replacing existing trestle with a rail and bike/ped bridge over Soquel Creek & Capitola Village as part of the future passenger rail project



What is required to construct the trail on the existing Capitola Trestle?

- **From a constructability and engineering standpoint**, the Capitola Trestle could be repurposed into a bicycle and pedestrian bridge if required structural repairs are completed (\$7 million in 2021 dollars)
- **From a regulatory standpoint**, the rail line would need to go through the regulatory process administered by the federal Surface Transportation Board (STB) to be abandoned and railbanked



How can the Santa Cruz Branch Rail Line be railbanked?

- The freight operator would need to file for direct abandonment with the Surface Transportation Board (STB) or an interested party could file for adverse abandonment
- The RTC would need to both file a petition with the STB to enter into railbanking negotiations, and subsequently enter into a railbank agreement with the freight operator
- The RTC would need to assume financial liability for preserving the rail line



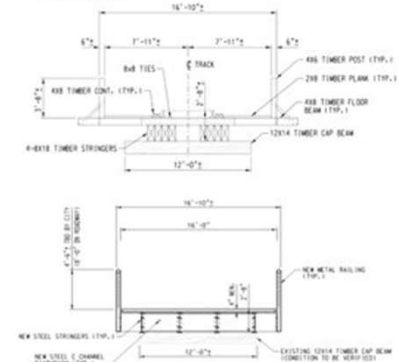
Map of Monterey Bay showing the proposed route for the 101B Bypass. The map includes labels for 'Capitola Village', 'Monterey Bay', 'Highway 101', 'Highway 163', 'Highway 1', 'Highway 17', 'Highway 152', 'Highway 156', 'Highway 158', 'Highway 160', 'Highway 162', 'Highway 164', 'Highway 166', 'Highway 168', 'Highway 170', 'Highway 172', 'Highway 174', 'Highway 176', 'Highway 178', 'Highway 180', 'Highway 182', 'Highway 184', 'Highway 186', 'Highway 188', 'Highway 190', 'Highway 192', 'Highway 194', 'Highway 196', 'Highway 198', 'Highway 200'. A legend indicates 'Wayfinding/Direction Signage Location' with a green circle icon.



- New pedestrian/bicycle trail bridge combined with replacement of the Capitola Trestle
- Construction of the Coastal Rail Trail from Cliff Drive to Monterey Ave (shown by the dashed purple line below), inclusive of the new combined bridge noted above.

To build an interim trail on the Capitola Trestle, the following steps would need to occur:

- Filing for adverse abandonment of the freight easement on the Santa Cruz Branch Line. Abandonment is subject to approval by a federal agency, the Surface Transportation Board.
- Execution of a Trail Use Agreement between RTC & Railroad
- Funding (estimate was \$7.5M in 2021 dollars) would need to be secured to rehabilitate the trestle and convert it to an interim trail.



Note: Due to the uncertainty around the abandonment process, RTC staff considers it infeasible to include a trail on the Capitola Trestle within the funding deadlines associated with the Rail Trail 10/11 project, particularly the \$67 million Active Transportation Program grant.

Capitola Trestle Frequently Asked Questions

https://sccrtc.org/wp-content/uploads/2023/10/FAQ_Capitola-Trestle.pdf