

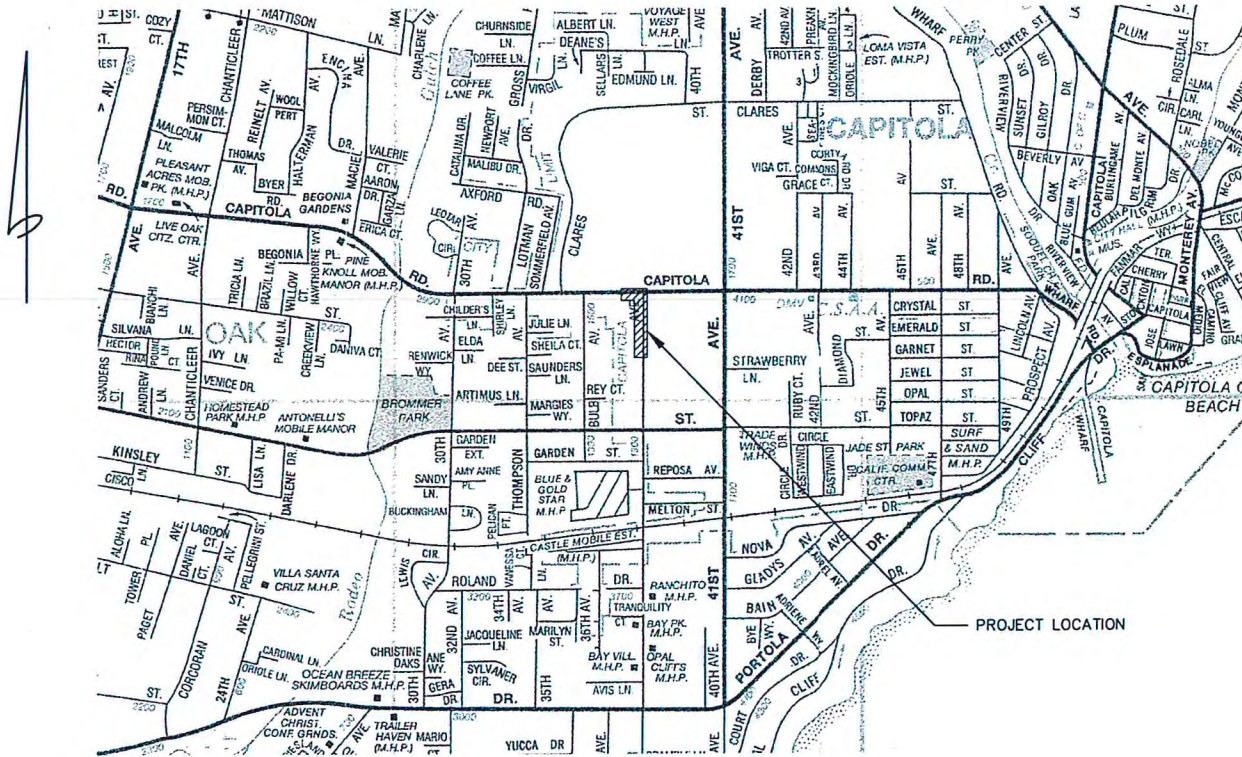
# IMPROVEMENT PLANS

## 38TH AVENUE SIDEWALK RECONSTRUCTION PROJECT

### CAPITOLA, CALIFORNIA

#### GENERAL NOTES

1. THE CONTRACTOR SHALL MAKE A DETAILED AND THOROUGH STUDY OF THESE PLANS IN THEIR ENTIRETY PRIOR TO ANY WORK. THE CONTRACTOR IS TO VERIFY ALL EXISTING CONSTRUCTION CONDITIONS AND IS TO COORDINATE THESE DRAWINGS WITH ALL OTHER TRADE DISCIPLINES FOR THE COMPLETED WORK. THE CONTRACTOR IS ALSO TO UNDERSTAND THAT ANY FEATURE OF CONSTRUCTION NOT FULLY SHOWN OR DETAILED SHALL BE OF THE SAME TYPE SHOWN FOR SIMILAR CONDITIONS.
2. ALL EARTHWORK SHALL BE PERFORMED IN ACCORDANCE WITH THE CITY OF CAPITOLA MUNICIPAL CODE AND THE LATEST STATE STANDARD SPECIFICATIONS, STANDARD DETAILS, & THE SPECIAL PROVISIONS NOTED HEREON.
3. THE CONTRACTOR SHALL IMMEDIATELY REPORT TO THE ENGINEER ANY DISCREPANCY OCCURRING ON THE DRAWINGS OR FOUND IN HIS COORDINATION WORK. NO CHANGES IN APPROVED PLANS SHALL BE MADE WITHOUT PRIOR WRITTEN APPROVAL OF THE PROJECT ENGINEER.
4. ANY REQUEST FOR ALTERATIONS OR SUBSTITUTIONS MUST BE PRESENTED DIRECTLY TO THE ENGINEER, ACCOMPANIED BY A DETAILED SKETCH, FOR REVIEW, BEFORE ANY APPROVAL WILL BE GIVEN AND BEFORE PROCEEDING WITH THE WORK. ABSOLUTELY NO ALTERATIONS OF THESE DOCUMENTS OF ANY KIND WILL BE APPROVED ON ANY SHOP DRAWINGS.
5. ALL CONSTRUCTION SHALL CONFORM TO THE APPLICABLE PROVISIONS OF THE STATE OF CALIFORNIA STANDARD SPECIFICATIONS (CALTRANS), LATEST EDITION, THE CITY OF CAPITOLA DESIGN CRITERIA, THE CALIFORNIA MANUAL ON UNIFORM TRAFFIC CONTROL DEVICES (CAMUTCD), LATEST EDITION, AND ALL APPLICABLE CODES AND ORDINANCES.
6. ALL UNDERGROUND UTILITIES SHALL BE INSTALLED PRIOR TO THE PLACEMENT OF ANY NEW CURB, GUTTER, SIDEWALK & PAVEMENT.
7. THE CONTRACTOR SHALL SECURE ALL REQUIRED CONSTRUCTION PERMITS PRIOR TO THE START OF WORK.
8. NO CHANGES IN THE APPROVED IMPROVEMENT PLANS SHALL BE MADE WITHOUT PRIOR WRITTEN APPROVAL OF THE ENGINEER.
9. CONTRACTOR AGREES THAT IN ACCORDANCE WITH GENERALLY ACCEPTED CONSTRUCTION PRACTICES, CONTRACTOR WILL BE REQUIRED TO ASSUME SOLE AND COMPLETE RESPONSIBILITY FOR JOB SITE CONDITIONS DURING THE COURSE OF CONSTRUCTION OF THE PROJECT, INCLUDING SAFETY OF ALL PERSONS AND PROPERTY; THAT THIS REQUIREMENT SHALL BE MADE TO APPLY CONTINUOUSLY AND NOT BE LIMITED TO NORMAL WORKING HOURS, AND CONTRACTOR FURTHER AGREES TO DEFEND, INDEMNIFY AND HOLD PROJECT ENGINEER HARMLESS FROM ANY AND ALL LIABILITY, REAL OR ALLEGED, IN CONNECTION WITH THE PERFORMANCE OF WORK ON THIS PROJECT, EXCEPTING LIABILITY ARISING FROM THE SOLE NEGLIGENCE OF THE PROJECT ENGINEER.
10. THE CONTRACTOR SHALL NOTIFY THE CITY INSPECTOR 48 HOURS PRIOR TO COMMENCING WORK.
11. ALL KNOWN EXISTING UTILITY LINES ARE SHOWN FOR INFORMATION ONLY. CONTRACTOR SHALL EXERCISE ALL NECESSARY CAUTION TO AVOID DAMAGE TO ANY EXISTING UTILITIES OR FACILITIES TO REMAIN IN PLACE, WHETHER OR NOT SUCH LINES OR FACILITIES ARE SHOWN ON THESE PLANS, AND SHALL BEAR FULL RESPONSIBILITY FOR ANY DAMAGE THEREON. CONTRACTOR IS ADVISED TO CONTACT A UNDERGROUND SERVICE LOCATOR FOR MARKING UNDERGROUND LINES PRIOR TO BEGINNING WORK. THE PROJECT INSPECTOR SHALL BE PRESENT WHILE THE UNDERGROUND SERVICE LOCATOR IS ON-SITE.



VICINITY MAP  
NOT TO SCALE


#### LEGEND

- AREA DRAIN OR CATCH BASIN
- BENCHMARK
- X — FENCE LINE
- ⊕ FIRE HYDRANT
- FOUND MONUMENT AS NOTED
- G — GAS LINE
- P — PROPERTY LINE
- S — SANITARY SEWER LINE
- △ SET RANDOM NAIL
- SIGN
- +46.21 SPOT ELEVATION
- SD — STORM DRAIN LINE
- TREE
- W — WATER LINE

#### ABBREVIATIONS

AC	ASPHALT CONCRETE
APN	ASSESSORS PARCEL NUMBER
C	CURB
CAMUTCD	CALIFORNIA MANUAL ON UNIFORM TRAFFIC CONTROL DEVICES
CB	CATCH BASIN
CONC	CONCRETE
DWY	DRIVEWAY
(E), EX	EXISTING
ELEC	ELECTRIC
FC	FACE OF CURB
FD	FOUND
FL	FLOWLINE
PH	FIRE HYDRANT
G	GUTTER
GR	GRATE
HB	HOSEBIB
IP	INVERT
IP	IRON PIPE
LND	LANDING
MAG	MAGNETIC
(N)	NEW
±	PLUS OR MINUS
(P)	PROPOSED
PA	PLANTING AREA
PAGE	PACIFIC GAS & ELECTRIC
PAVT	PAVEMENT
RCE	REGISTERED CIVIL ENGINEER
RW	RETIROOD
SDCB	STORM DRAIN CATCH BASIN
SO.	SQUARE
STD	STANDARD
S/W	SIDEWALK
TC	TOP OF CURB
TELE	TELEPHONE
WM	WATER METER

APPROVED FOR CONSTRUCTION BY THE CITY OF CAPITOLA

  
 STEVEN JESBERG, PUBLIC WORKS DIRECTOR

#### SHEET INDEX

- C1.0 COVER SHEET
- C2.0 SIDEWALK RECONSTRUCTION PLAN
- C3.0 STANDARD DETAILS

**DISCLAIMER**  
THE DATA SET FORTH ON THIS SHEET IS THE PROPERTY OF BOWMAN & WILLIAMS CONSULTING CIVIL ENGINEERS. IT IS AN INSTRUMENT OF SERVICE AND MAY NOT BE REPRODUCED, ALTERED, OR USED WITHOUT THE CONSENT OF THE ENGINEER. THE PROPER ELECTRONIC TRANSFER OF DATA SHALL BE THE USER'S RESPONSIBILITY WITHOUT LIABILITY TO THE ENGINEER. UNAUTHORIZED USE IS PROHIBITED.




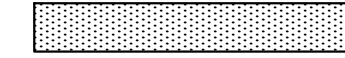
July 13, 2018

<b>BOWMAN &amp; WILLIAMS</b> CONSULTING CIVIL ENGINEERS 3949 RESEARCH PARK DRIVE, SUITE 100 SOQUEL, CA 95073 (831) 426-3560		<b>COVER SHEET</b>  38TH AVENUE SIDEWALK RECONSTRUCTION PROJECT CAPITOLA, CALIFORNIA	
SCALE: NTS	DRAWN: ML	JOB NO.: 24370.08	SHEET: C1.0
DATE: JUNE 18, 2018	CHECKED: JFR	INDEX: R0002.2D	
DESIGN:	DWG NAME: 24370.08_C1.0	FILE NO.: 24370	

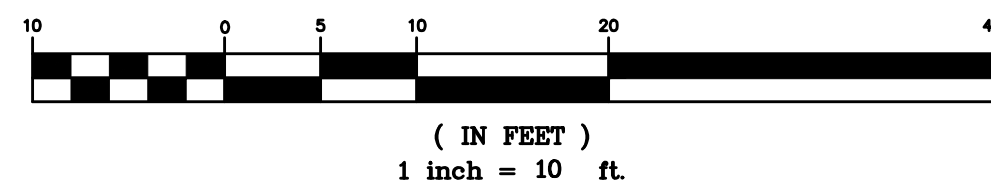
**NOTES**

CONSTRUCT NEW SIDEWALK, CURB AND GUTTER WHERE OCCURS. SEE CITY OF CAPITOLA CURB, GUTTER, AND SIDEWALK DETAIL AND SPECIFICATIONS S-1 & SP-1. SEE SHEET C3.0

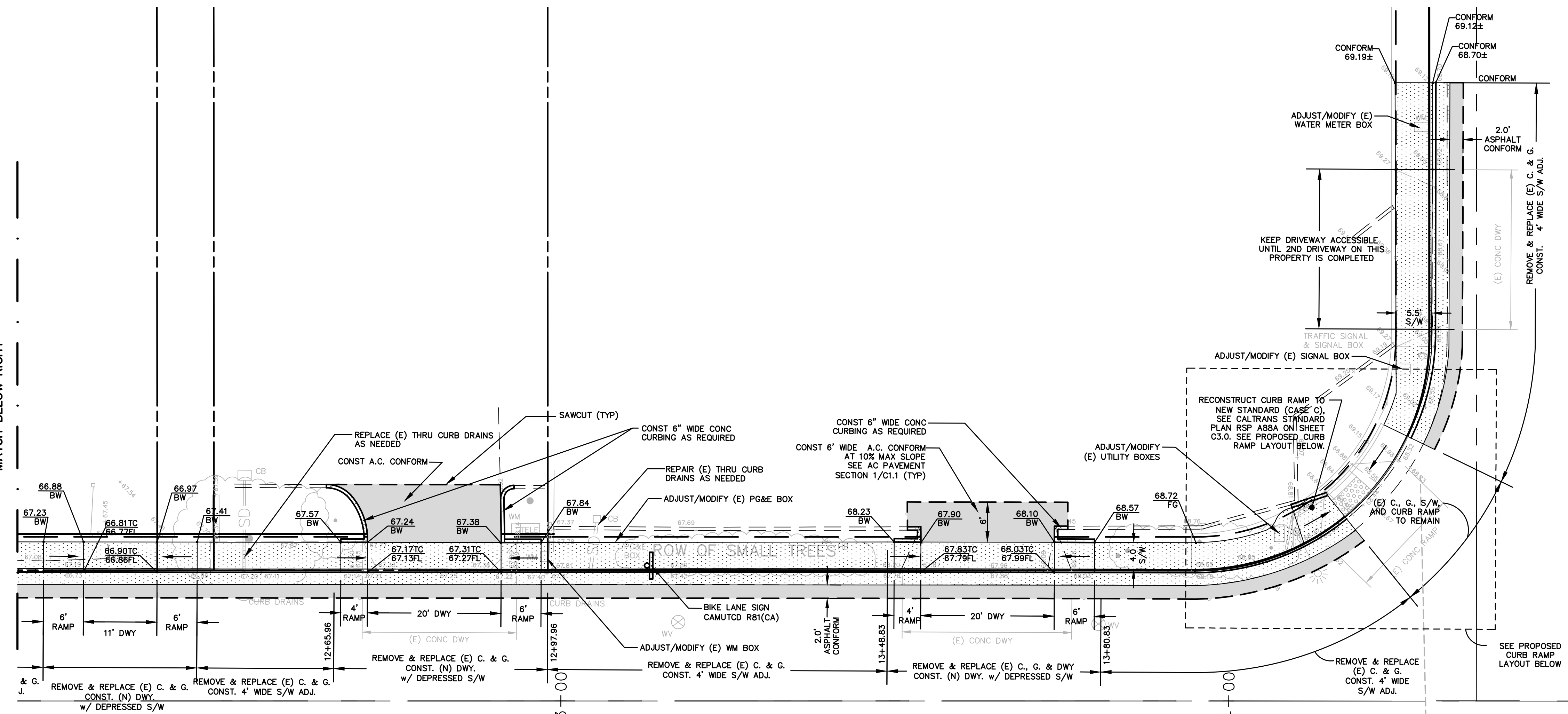
**PAVEMENT LEGEND**

-  NEW AC PAVEMENT SECTION PER DETAIL 1/C3.0
-  NEW CONCRETE SIDEWALK, CURB, GUTTER, & DRIVEWAY. SEE SHEET C3.0

**GRAPHIC SCALE**

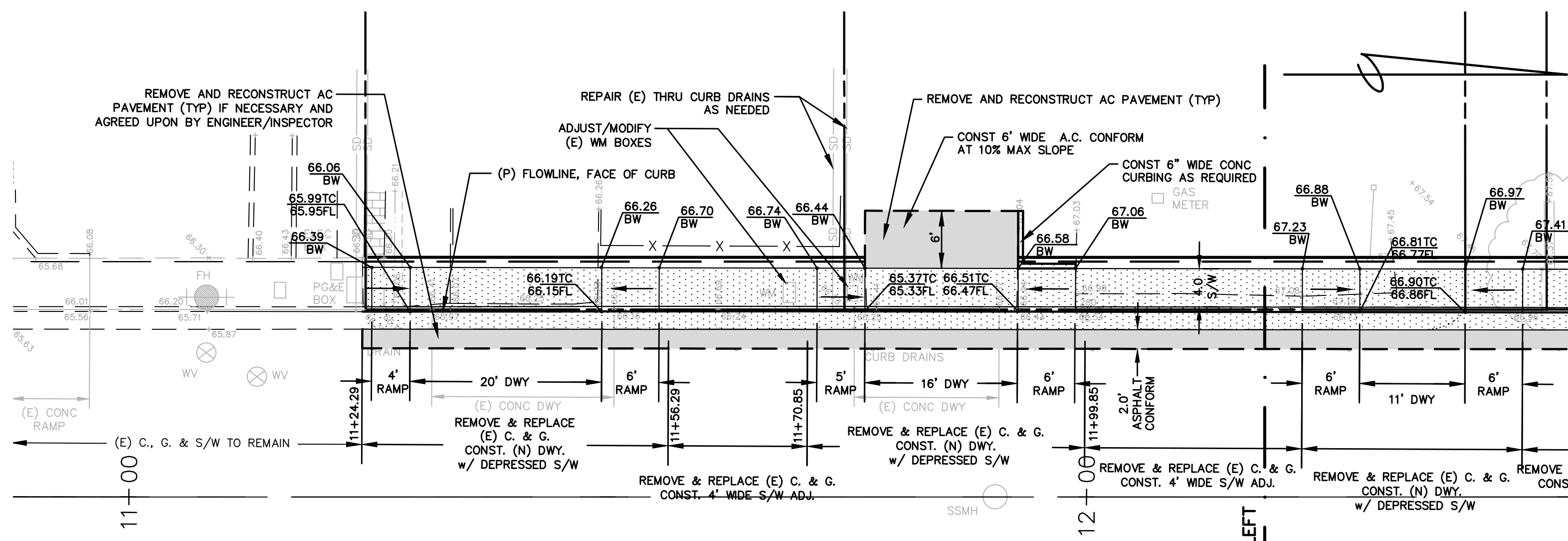


MATCH BELOW RIGHT



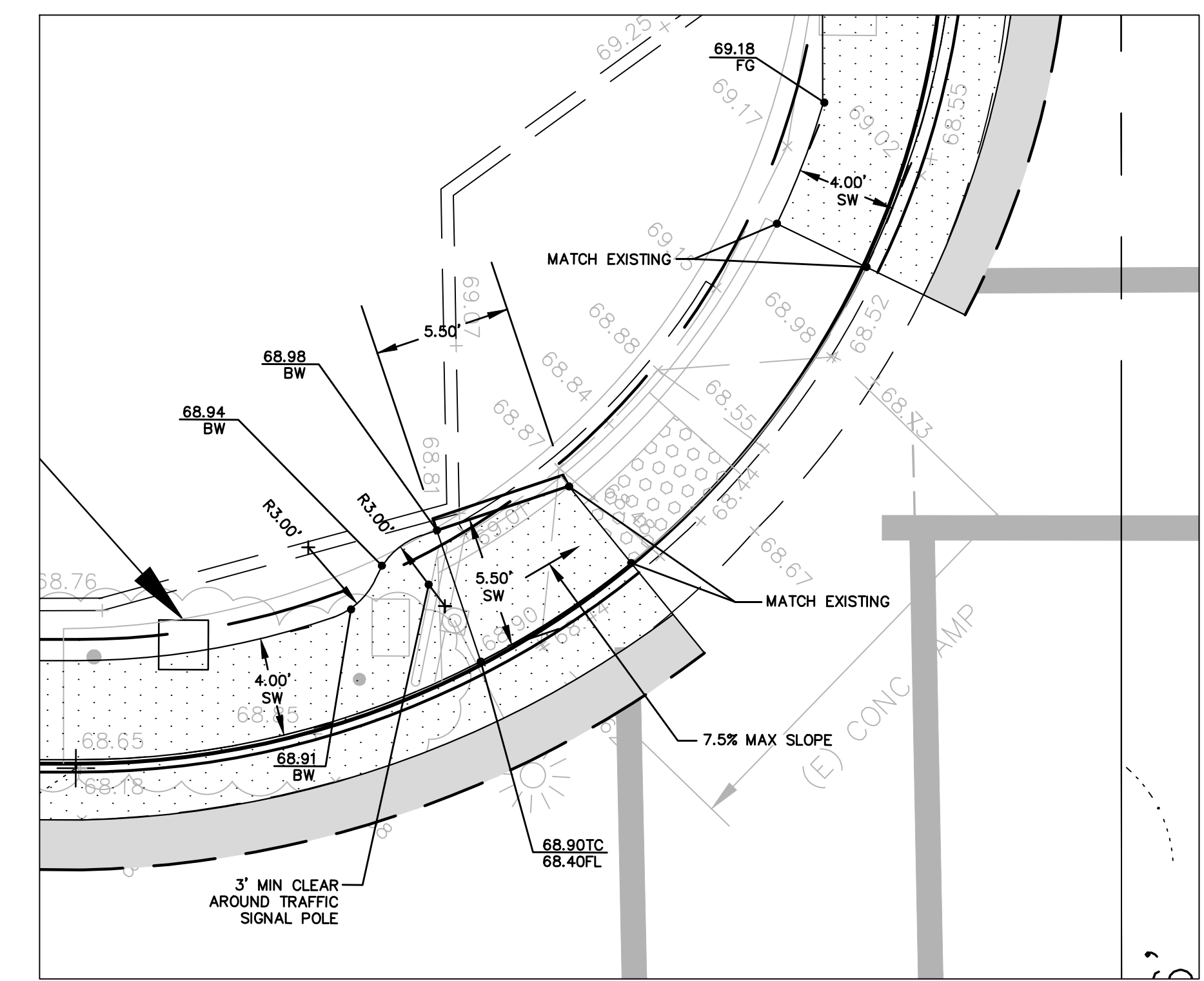
38TH AVENUE

CAPITOLA ROAD



38TH AVENUE

MATCH ABOVE LEFT



**PROPOSED CURB RAMP LAYOUT**  
SCALE: 1"=5'

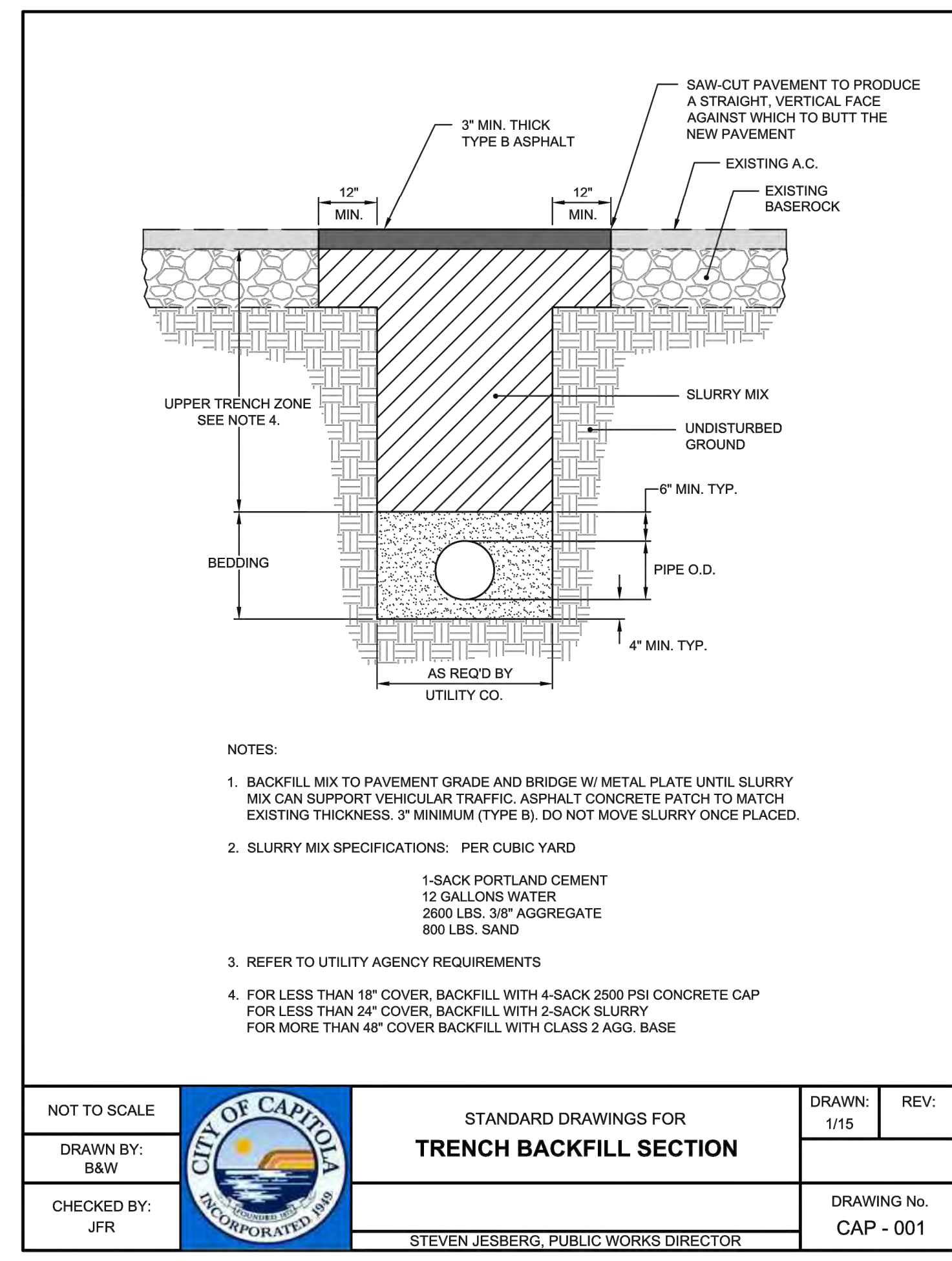


July 13, 2018

**DISCLAIMER**  
THE DATA SET FORTH ON THIS SHEET IS THE PROPERTY OF BOWMAN & WILLIAMS CONSULTING CIVIL ENGINEERS. IT IS AN INSTRUMENT OF SERVICE AND MAY NOT BE REPRODUCED, ALTERED, OR USED WITHOUT THE CONSENT OF THE ENGINEER. THE PROPER ELECTRONIC TRANSFER OF DATA SHALL BE THE USER'S RESPONSIBILITY WITHOUT LIABILITY TO THE ENGINEER. UNAUTHORIZED USE IS PROHIBITED.

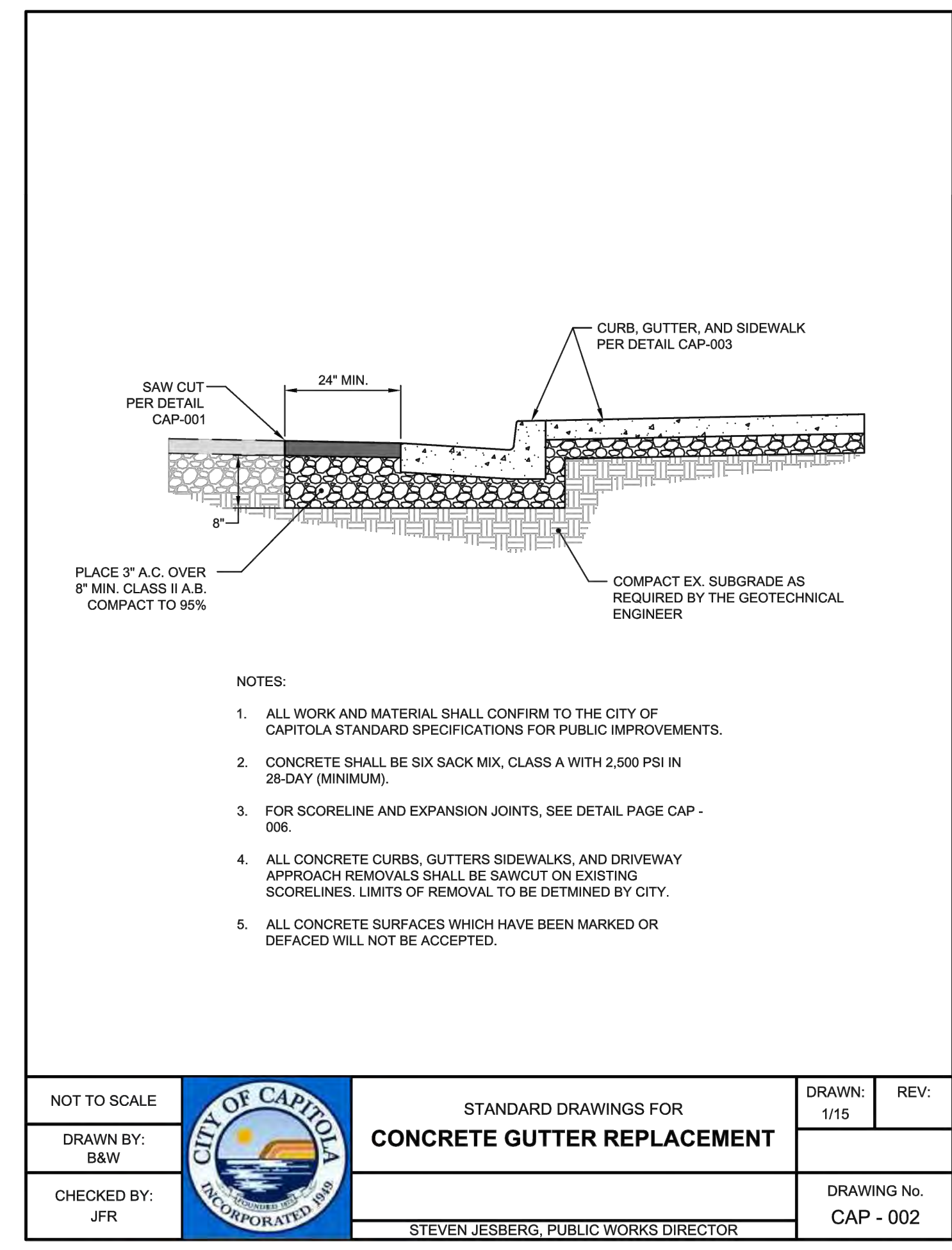
APN		REVISED	
BOWMAN & WILLIAMS CONSULTING CIVIL ENGINEERS 3949 RESEARCH PARK DRIVE, SUITE 100 SOQUEL, CA 95073 (831) 426-3560		SIDEWALK RECONSTRUCTION PLAN	
38TH AVENUE ROAD RECONSTRUCTION PROJECT CAPITOLA, CALIFORNIA		SCALE AS SHOWN	DRAWN ML
DATE JUN 18, 2018	CHECKED JFR	JOB NO. 24370.08	SHEET C2.0
DESIGN	DWG NAME 24370.08_C2.0	INDEX RODEO 2D	3
	FILE NO. 24370		

J:\B&W\24370\24370.08\_C2.0.dwg, 7/13/2018 5:59:50 AM, DWG To PDF.pcl



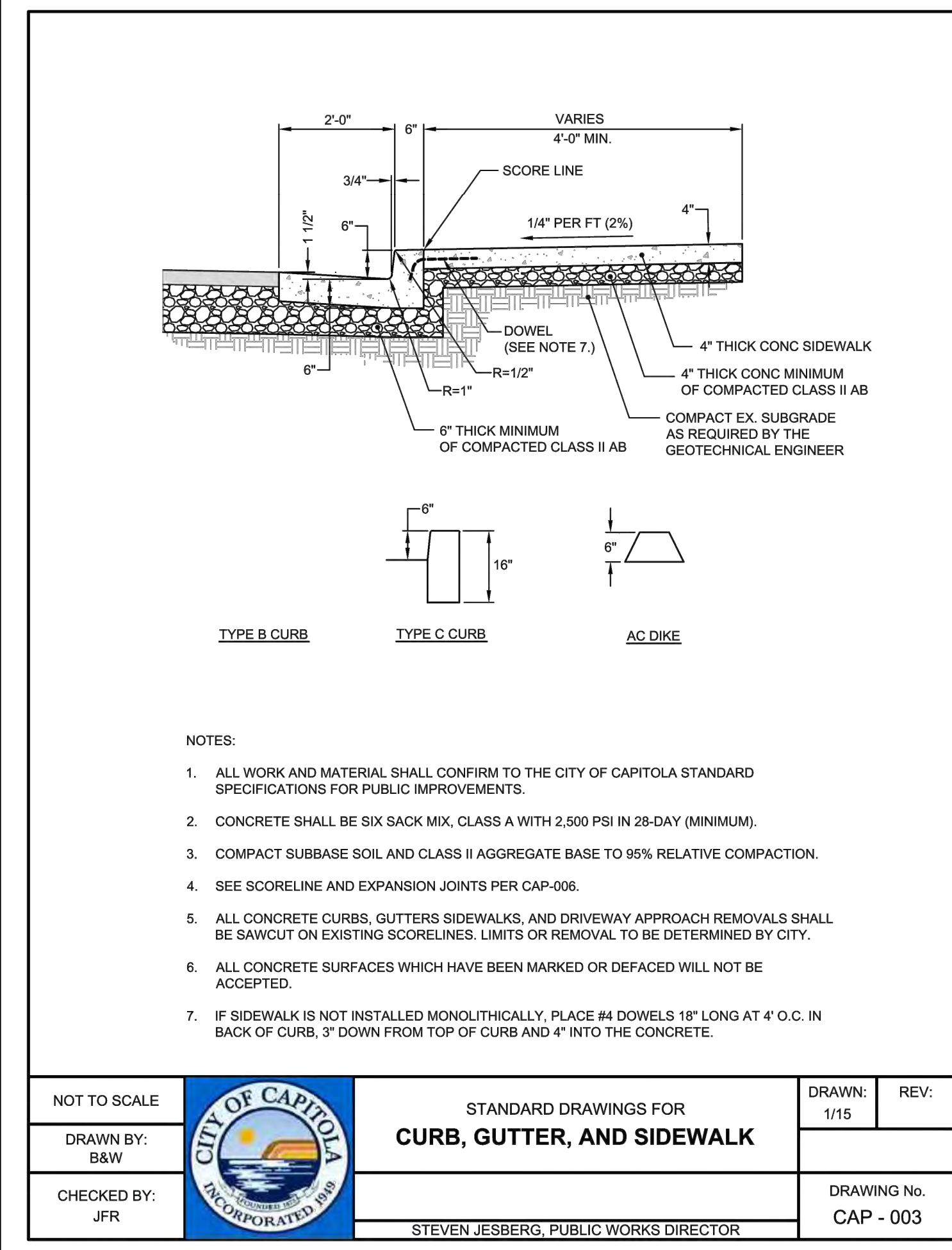
- NOTES:
- BACKFILL MIX TO PAVEMENT GRADE AND BRIDGE W/ METAL PLATE UNTIL SLURRY MIX CAN SUPPORT VEHICULAR TRAFFIC. ASPHALT CONCRETE PATCH TO MATCH EXISTING THICKNESS. 3\"/>

NOT TO SCALE		STANDARD DRAWINGS FOR	DRAWN: 1/15	REV:
DRAWN BY: B&W		<b>TRENCH BACKFILL SECTION</b>		
CHECKED BY: JFR		STEVEN JESBERG, PUBLIC WORKS DIRECTOR	DRAWING No. CAP - 001	



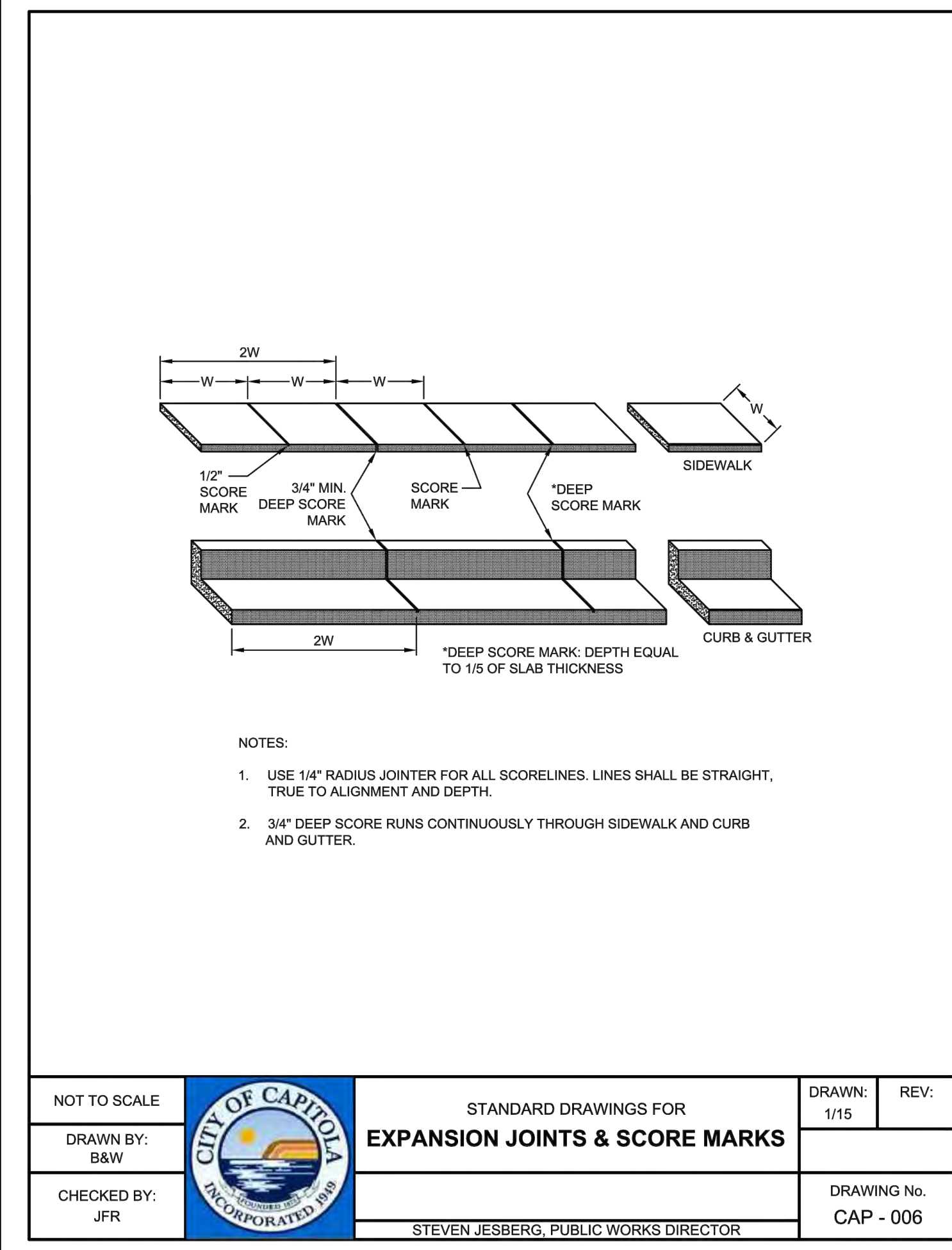
- NOTES:
- ALL WORK AND MATERIAL SHALL CONFIRM TO THE CITY OF CAPITOLA STANDARD SPECIFICATIONS FOR PUBLIC IMPROVEMENTS.
  - CONCRETE SHALL BE SIX SACK MIX, CLASS A WITH 2,500 PSI IN 28-DAY (MINIMUM).
  - FOR SCORELINE AND EXPANSION JOINTS, SEE DETAIL PAGE CAP-006.
  - ALL CONCRETE CURBS, GUTTERS, SIDEWALKS, AND DRIVEWAY APPROACH REMOVALS SHALL BE SAWCUT ON EXISTING SCORELINES. LIMITS OF REMOVAL TO BE DETERMINED BY CITY.
  - ALL CONCRETE SURFACES WHICH HAVE BEEN MARKED OR DEFACTED WILL NOT BE ACCEPTED.

NOT TO SCALE		STANDARD DRAWINGS FOR	DRAWN: 1/15	REV:
DRAWN BY: B&W		<b>CONCRETE GUTTER REPLACEMENT</b>		
CHECKED BY: JFR		STEVEN JESBERG, PUBLIC WORKS DIRECTOR	DRAWING No. CAP - 002	



- NOTES:
- ALL WORK AND MATERIAL SHALL CONFIRM TO THE CITY OF CAPITOLA STANDARD SPECIFICATIONS FOR PUBLIC IMPROVEMENTS.
  - CONCRETE SHALL BE SIX SACK MIX, CLASS A WITH 2,500 PSI IN 28-DAY (MINIMUM).
  - COMPACT SUBBASE SOIL AND CLASS II AGGREGATE BASE TO 95% RELATIVE COMPACTION.
  - SEE SCORELINE AND EXPANSION JOINTS PER CAP-006.
  - ALL CONCRETE CURBS, GUTTERS, SIDEWALKS, AND DRIVEWAY APPROACH REMOVALS SHALL BE SAWCUT ON EXISTING SCORELINES. LIMITS OF REMOVAL TO BE DETERMINED BY CITY.
  - ALL CONCRETE SURFACES WHICH HAVE BEEN MARKED OR DEFACTED WILL NOT BE ACCEPTED.
  - IF SIDEWALK IS NOT INSTALLED MONOLITHICALLY, PLACE #4 DOWELS 18\"/>

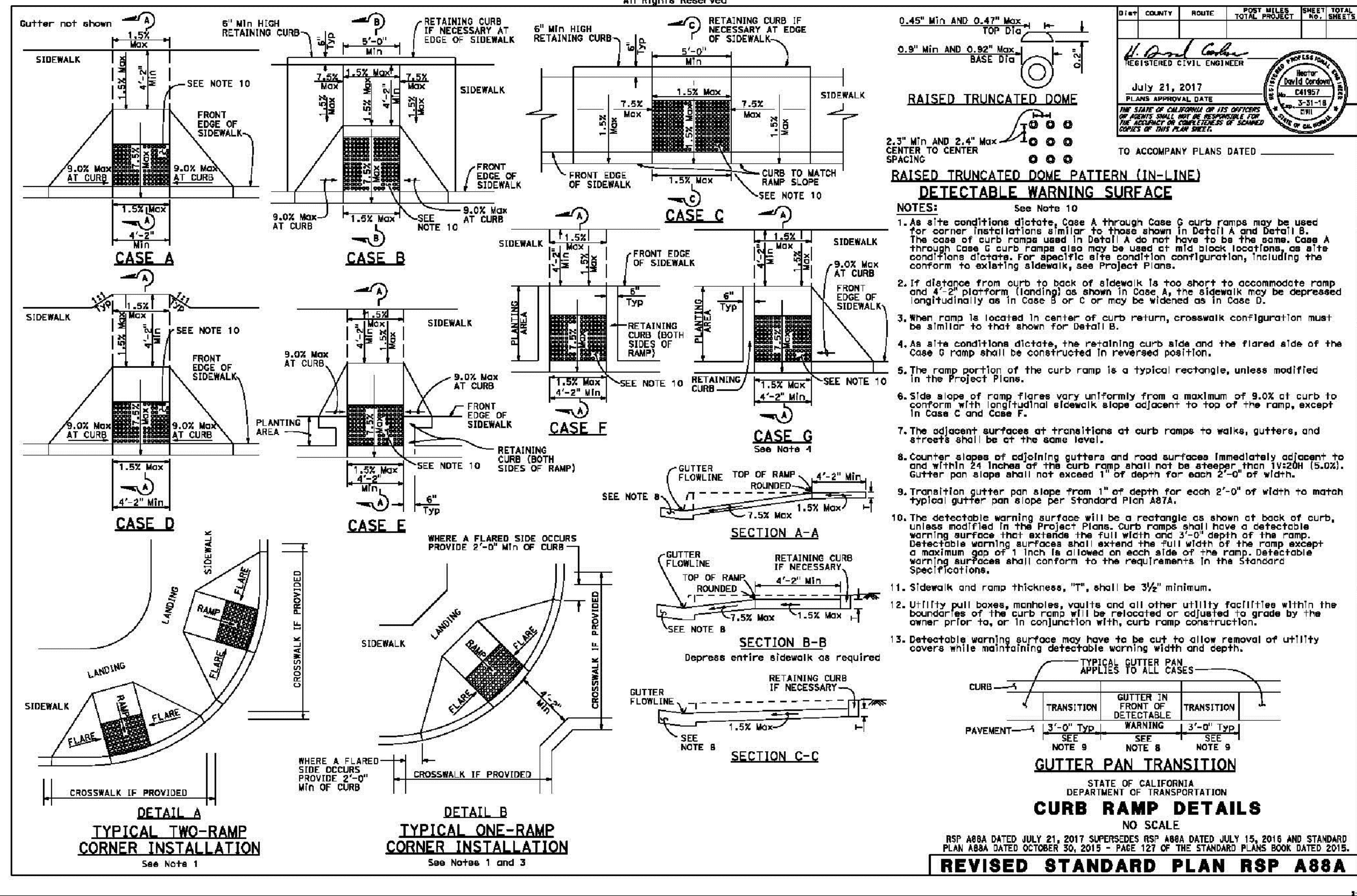
NOT TO SCALE		STANDARD DRAWINGS FOR	DRAWN: 1/15	REV:
DRAWN BY: B&W		<b>CURB, GUTTER, AND SIDEWALK</b>		
CHECKED BY: JFR		STEVEN JESBERG, PUBLIC WORKS DIRECTOR	DRAWING No. CAP - 003	



- NOTES:
- USE 1/4\"/>

NOT TO SCALE		STANDARD DRAWINGS FOR	DRAWN: 1/15	REV:
DRAWN BY: B&W		<b>EXPANSION JOINTS &amp; SCORE MARKS</b>		
CHECKED BY: JFR		STEVEN JESBERG, PUBLIC WORKS DIRECTOR	DRAWING No. CAP - 006	

© 2017 California Department of Transportation All Rights Reserved



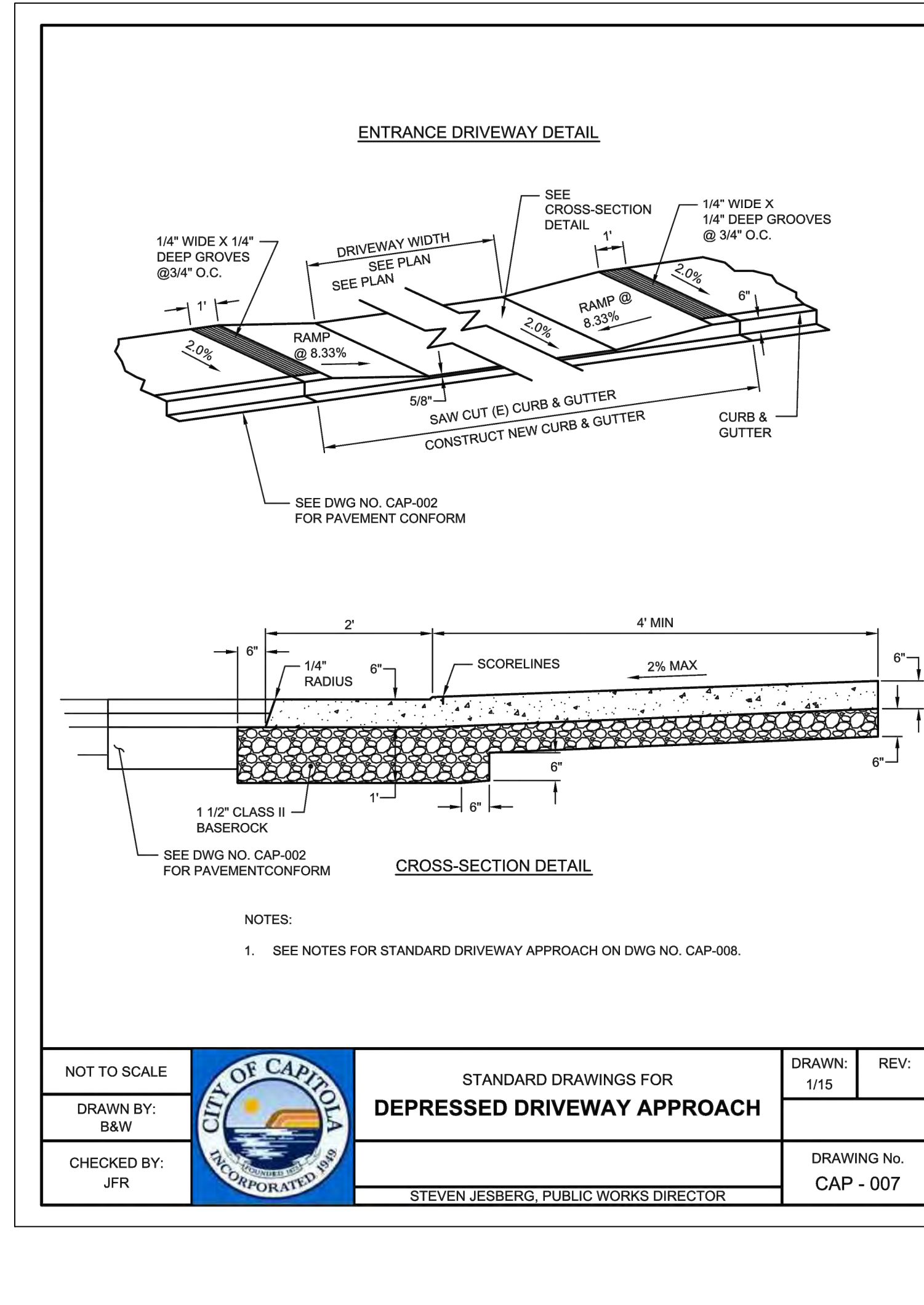
**RAISED TRUNCATED DOME DETECTABLE WARNING SURFACE**

- NOTES:
- As site conditions dictate, Case A through Case G curb ramps may be used for corner installations similar to those shown in Detail A and Detail B. The case of curb ramps used in Detail A do not have to be the same. Case A through Case G curb ramps also may be used at mid-block locations, as site conditions dictate. For specific site condition configuration, including the conform to existing sidewalk, see Project Plans.
  - If distance from curb to back of sidewalk is too short to accommodate ramp and 4\"/>

**GUTTER PAN TRANSITION CURB RAMP DETAILS**

NO SCALE  
RSP A88A DATED JULY 21, 2017 SUPERSEDES RSP A88A DATED JULY 15, 2016 AND STANDARD PLAN A88A DATED OCTOBER 30, 2015 - PAGE 127 OF THE STANDARD PLANS BOOK DATED 2015.  
**REVISED STANDARD PLAN RSP A88A**

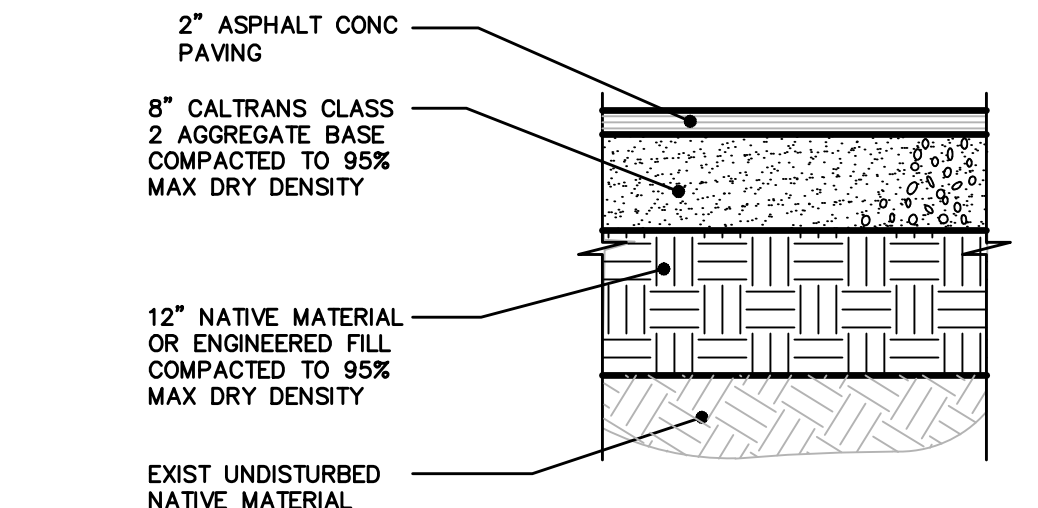
2015 REVISED STANDARD PLAN RSP A88A



**ENTRANCE DRIVEWAY DETAIL**

**CROSS-SECTION DETAIL**

NOT TO SCALE		STANDARD DRAWINGS FOR	DRAWN: 1/15	REV:
DRAWN BY: B&W		<b>DEPRESSED DRIVEWAY APPROACH</b>		
CHECKED BY: JFR		STEVEN JESBERG, PUBLIC WORKS DIRECTOR	DRAWING No. CAP - 007	



**AC PAVEMENT SECTION**

SCALE: 3/4"=1'-0"



July 13, 2018

**DISCLAIMER**  
THE DATA SET FORTH ON THIS SHEET IS THE PROPERTY OF BOWMAN & WILLIAMS CONSULTING CIVIL ENGINEERS. IT IS AN INSTRUMENT OF SERVICE AND MAY NOT BE REPRODUCED, ALTERED, OR USED WITHOUT THE CONSENT OF THE ENGINEER. THE PROPER ELECTRONIC TRANSFER OF DATA SHALL BE THE USER'S RESPONSIBILITY WITHOUT LIABILITY TO THE ENGINEER. UNAUTHORIZED USE IS PROHIBITED.

APN			
REVISIONS			
<b>BOWMAN &amp; WILLIAMS</b> CONSULTING CIVIL ENGINEERS 3949 RESEARCH PARK DRIVE, SUITE 100 SOQUEL, CA 95073 (831) 426-3560		<b>STANDARD DETAILS</b>  38TH AVENUE ROAD RECONSTRUCTION PROJECT CAPITOLA, CALIFORNIA	
SCALE AS SHOWN	DRAWN ML	JOB NO. 24370.08	SHEET
DATE JUN 18, 2018	CHECKED JFR	INDEX RODEO 2D	<b>C3.0</b>
DESIGN	DWG NAME 24370.08_C3.0	FILE NO. 24370	3