



Jade Street Park Universally Accessible Playground

Council Presentation No 2
July 27, 2023

Presentation Points

- **Project Introduction**
- **Universal Access**
- **Process**
- **Concept Plan**
- **Enhancements**



Universal Access



Universally accessible: What does it mean?

Goal is to promote health and wellness in communities by providing the freedom of play for children and families of all abilities to play side-by-side.

- Play is a critical part of the social, emotional, cognitive, and physical development of every child.
- Playgrounds not only allow children with disabilities the right to play, but also parents and caregivers, and seniors.
- Provides multiple forms of play
- Range of risks
- Range of sensory engagement



Jade Street Park – Universally Accessible Playground

How We Got To This Point



■ Community Outreach

- Community Workshop No. 1
 - Pop Up at the Park No. 1
- Community Workshop No. 2
 - Pop up at the Park No. 2

Rescheduled to March 28 due to weather

March 25th

April 25th

April 29th

■ Preferred Concept Design

- City Council Presentation

June 8



■ Final Concept Design (Draft)

- City Council Presentation

July 27, 2023 TODAY



Jade Street Park – Universally Accessible Playground

Concept Plan







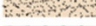


Concept Plan



CONCEPT LEGEND

- ① EXISTING PARKING LOT
- ② ENTRY MONUMENT
- ③ PICNIC TABLE
- ④ TRASH CONTAINERS
- ⑤ FENCING - 48" TALL
- ⑥ SEATING PAD
- ⑦ SLOPED WALKWAY
- ⑧ GAME TABLE
- ⑨ BANNER POLE
- ⑩ BENCH (4)
- ⑪ TRIKE TRACK
- ⑫ HANDRAIL AT THE CLIMBING SLOPE

SURFACE LEGEND

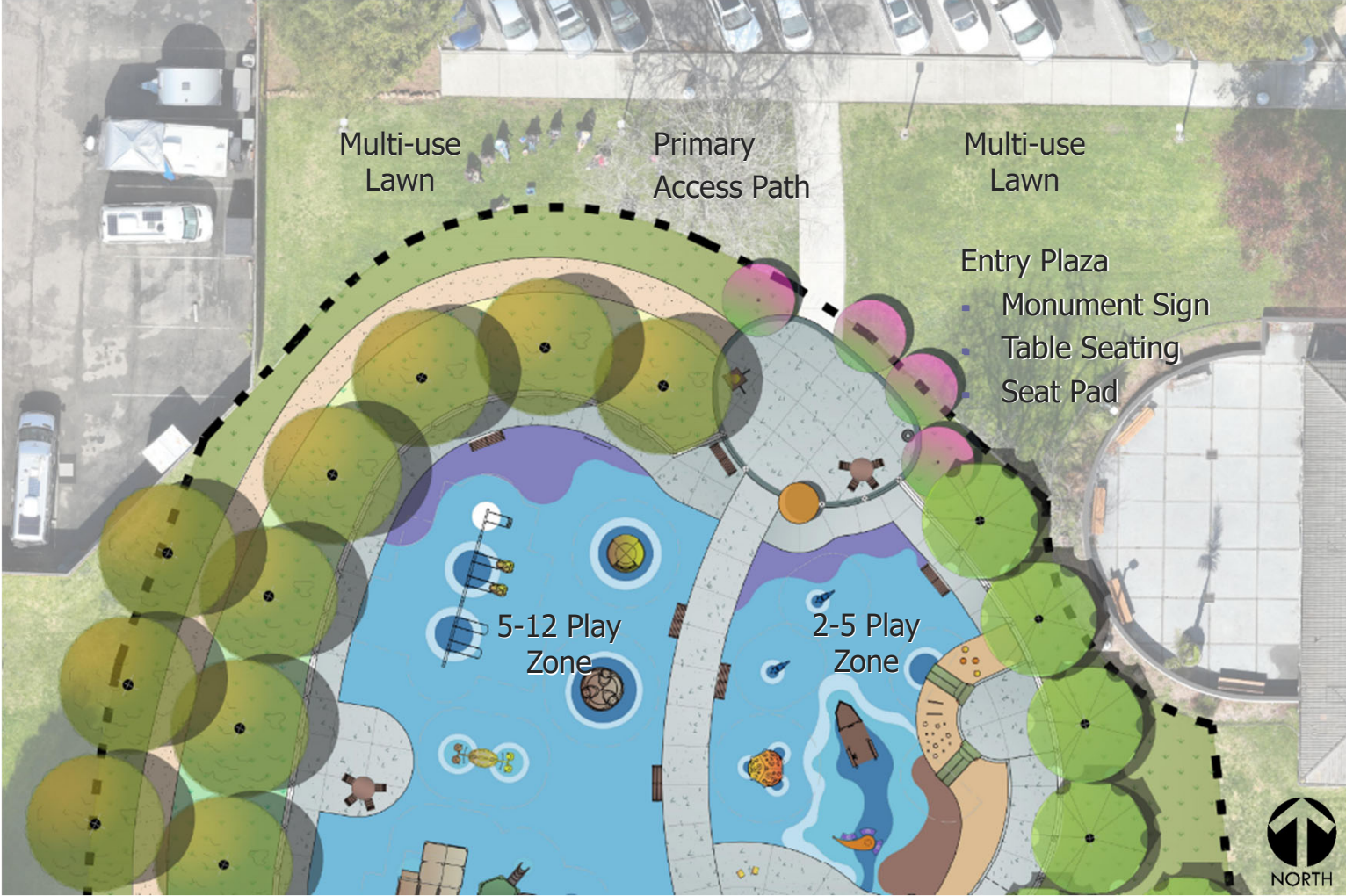
-  GRAY CONCRETE PAVING
-  RUBBER RESILIENT SURFACE
-  RESILIENT WOOD WALKWAY
-  SOD
-  RAIN GARDEN PLANTING
-  CALIFORNIA MEADOW - NATIVE HYDROSEED
-  SENSORY PLANTING

PLAY EQUIPMENT

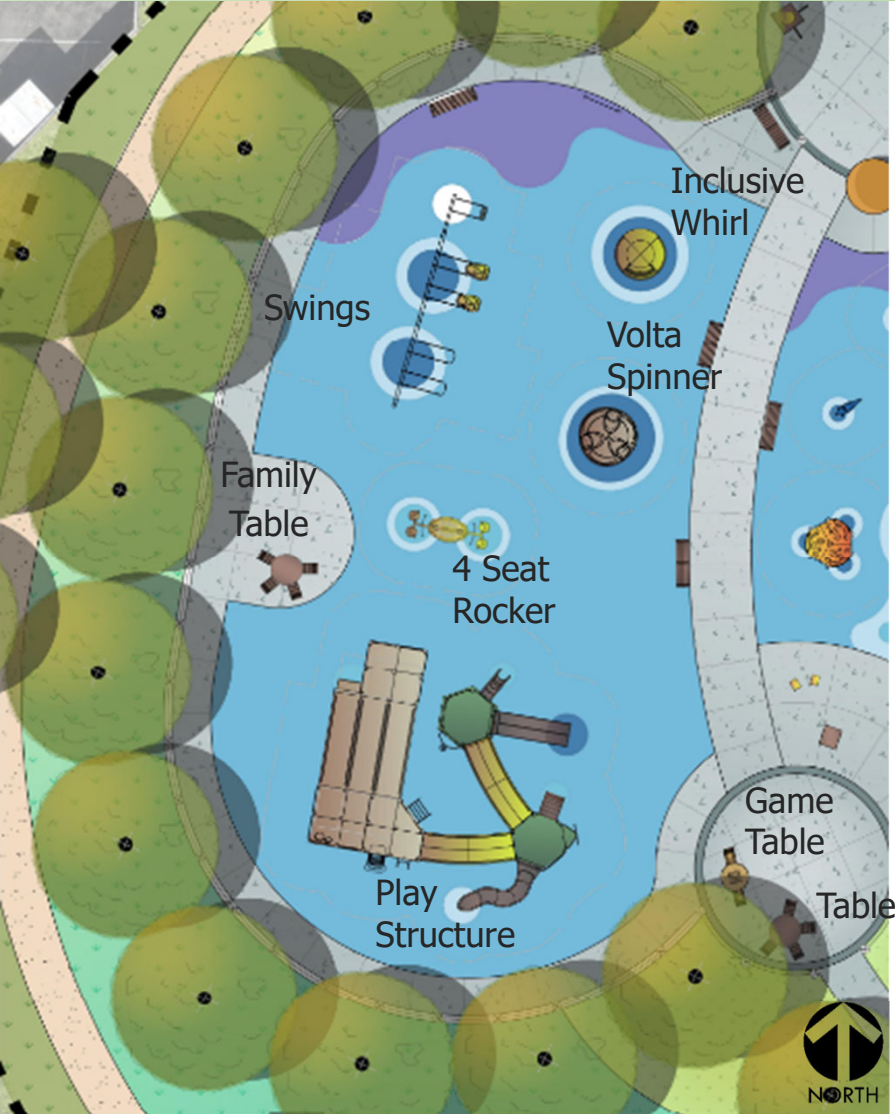
- Ⓐ 3-BAY SWING
- Ⓑ VOLTA SPINNER
- Ⓒ 4-SEATS ROCKER
- Ⓓ 5-12 COMPOSITE PLAY STRUCTURE
- Ⓔ INCLUSIVE WHIRL
- Ⓕ WHIMSY RIDER DOLPHIN (2)
- Ⓖ PLAY SHIP
- Ⓗ COZY DOME
- Ⓘ STRAIGHT SLIDE (2)
- Ⓙ PERCUSSION CAJON BOX (2)
- Ⓚ SANSA RIMBA
- Ⓛ NOVO TEARDROP COUNTER
- Ⓜ LOOP CLIMBERS (2)
- Ⓝ ROCK CLIMBERS
- Ⓞ RUBBER BALL CLIMBERS (4)
- Ⓟ COMMUNICATION BOARD



Concept Plan - Arrival and Entry



Concept Plan – 5-12 Play Zone



Concept Plan – 5-12 Play Zone



Jade St. Park

1174169-01-02-04 • 06.08.2023



Recreation Equipment

©2023 Landscape Structures. All Rights Reserved.

Play Features 5-12 Play Zone



Jade Street Park – Universally Accessible Playground

Concept Plan – 2-5 Play Zone

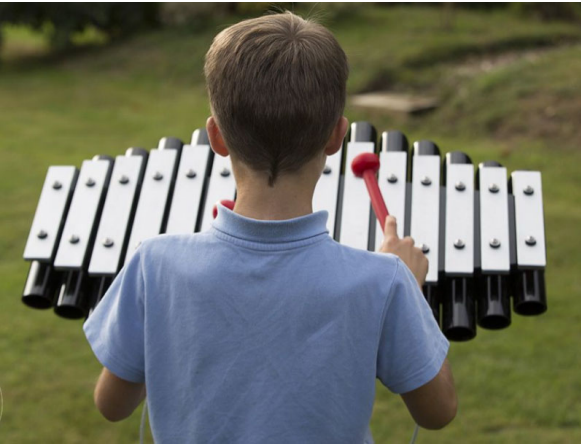
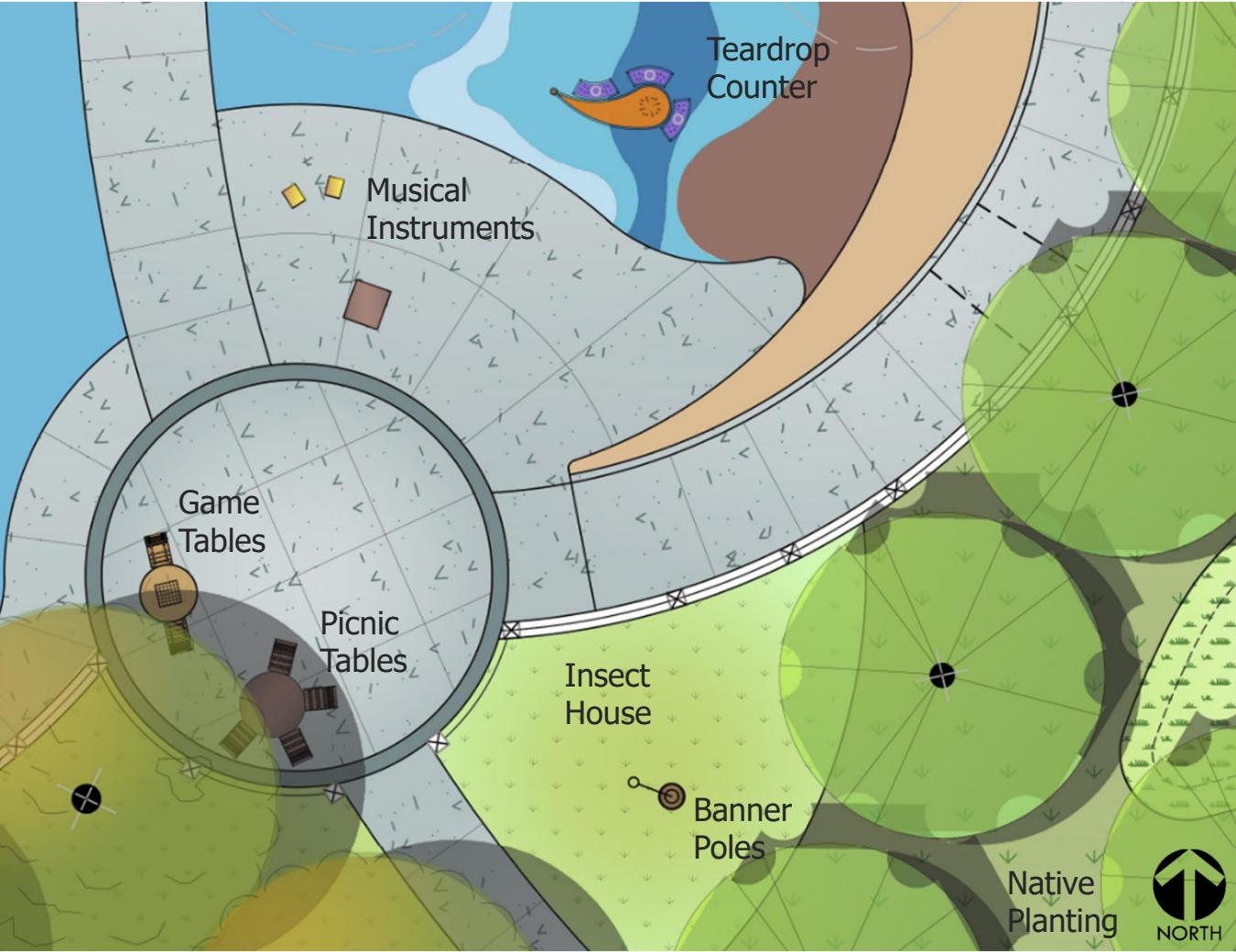


Play Features – 2-5 Play Zone



Jade Street Park – Universally Accessible Playground

Concept Plan – Music and South Plaza










Enhanced Concept Plan



CONCEPT LEGEND

- ① EXISTING PARKING LOT
- ② ENTRY MONUMENT
- ③ GROUP PICNIC TABLE (3)
- ④ TRASH CONTAINERS
- ⑤ FENCING - 48" TALL
- ⑥ SEATING PAD
- ⑦ SLOPED WALKWAY
- ⑧ GAME TABLE (3)
- ⑨ PICNIC TABLE - 4 SEATS (3)
- ⑩ BANNER POLE (3)
- ⑪ BENCH (4)
- ⑫ TRIKE TRACK
- ⑬ HANDRAIL AT CLIMBING SLOPE

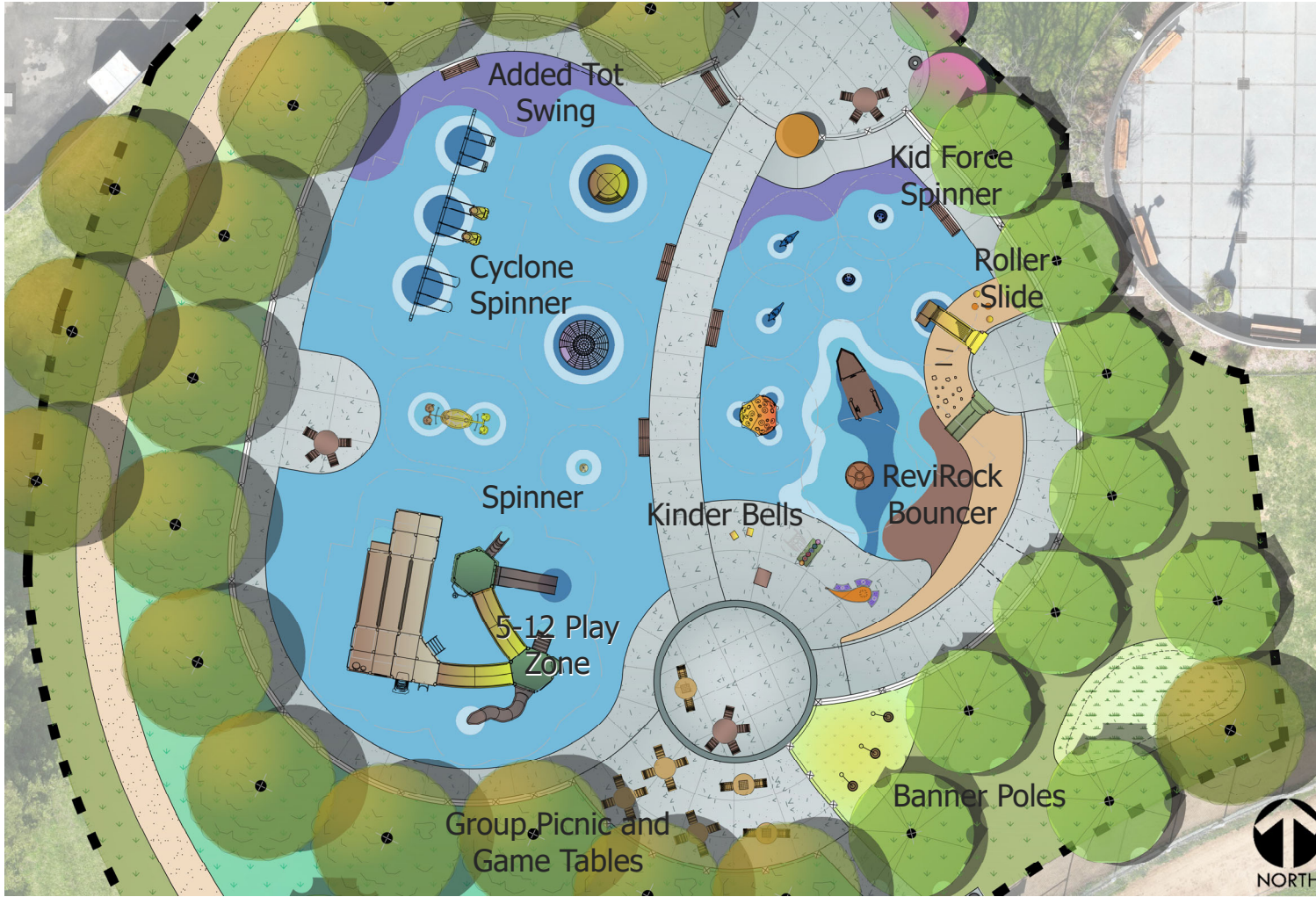
SURFACE LEGEND

-  GRAY CONCRETE PAVING
-  RUBBER RESILIENT SURFACE
-  RESILIENT WOOD WALKWAY
-  SOD
-  RAIN GARDEN PLANTING
-  CALIFORNIA MEADOW - NATIVE HYDROSEED
-  SENSORY PLANTING

PLAY EQUIPMENT

- Ⓐ 3-BAY SWING (1 EXTRA TOT SWING)
- Ⓑ 4-SEATS ROCKER
- Ⓒ 5-12 COMPOSITE PLAY STRUCTURE
- Ⓓ INCLUSIVE WHIRL
- Ⓔ ADA CYCLONE SPINNER
- Ⓕ REVIROCK BOUNCER
- Ⓖ WHIMSY RIDER DOLPHIN (2)
- Ⓗ KID FORCE SPINNER (2)
- Ⓘ PLAY SHIP
- Ⓙ COZY DOME
- Ⓚ ROLLER SLIDE
- Ⓛ DOUBLE SLIDE
- Ⓜ PERCUSSION CAJON BOX (2)
- Ⓝ SANSA RIMBA
- Ⓞ KINDERBELLS
- Ⓟ NOVO TEARDROP COUNTER
- Ⓠ LOOP CLIMBERS (3)
- Ⓡ ROCK CLIMBERS
- Ⓢ RUBBER BALL CLIMBERS (4)
- Ⓣ SWIFT TWIST SPINNER
- Ⓤ COMMUNICATION BOARD

Enhanced Concept - Arrival and Entry



Added Play Elements:

- Tot Swing
- Cyclone Spinner
- ReviRock Bouncer
- Kid Force Spinner
- Roller Slide
- Kinderbells
- Swift Twist Spinner

Added Site Elements:

- Group Picnic Area
- Banner Poles
- Game Tables

Enhanced Play Features



Ⓐ 3-BAY SWING (1 EXTRA TOT SWING)



Jade Street Park – Universally Accessible Playground

Enhanced Play Features



E ADA CYCLONE SPINNER



F REVIROCK BOUNCER



H KID FORCE SPINNER (2)

Enhanced Play Features



 ROLLER SLIDE



 KINDERBELLS



 SWIFT TWIST SPINNER

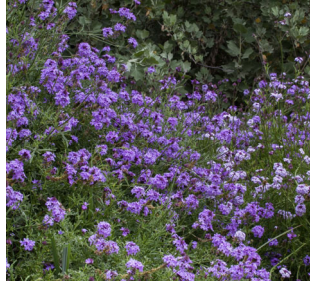
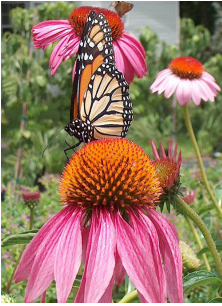


Sensory + Sound Garden



Jade Street Park – Universally Accessible Playground

Pollinator Garden + Planting



Jade Street Park – Universally Accessible Playground

Paving + Materials



Jade Street Park – Universally Accessible Playground

Seating & Social Spaces



Jade Street Park – Universally Accessible Playground



VERDE DESIGN

Thank You!



Jade Street Park – Universally Accessible Playground

Q&A Slides



Jade Street Park – Universally Accessible Playground

Design Concepts

April 25, 2023



Concept A



Concept B

Design Concept

June 8, 2023



Reach Concept

Design Concept

June 8, 2023



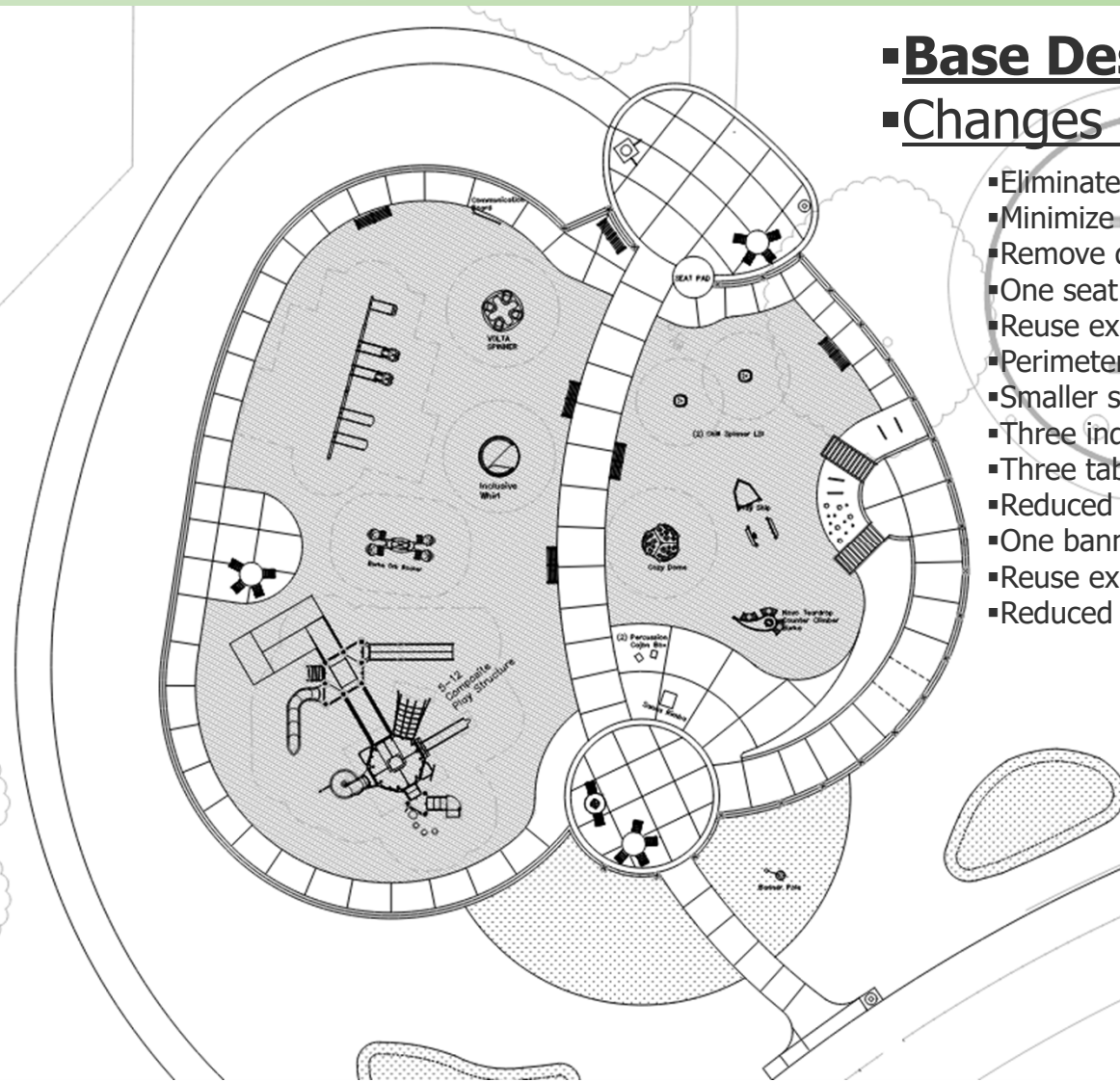
Jade Street Park – Universally Accessible Playground

Design Concepts

▪ Base Design - Value

▪ Changes from reach concept:

- Eliminate new entry node at parking lot and reuse existing walk to play area.
- Minimize arrival plaza
- Remove drinking fountain from play area.
- One seat pad (reduced from 4)
- Reuse existing (2) waste receptacles
- Perimeter walks reduced from 8' to 5' wide.
- Smaller swing (reduced one tot swing)
- Three independent play components at 5-12 play area (reduced from 6)
- Three tables (reduced from 7)
- Reduced independent play components
- One banner pole (reduced from 3)
- Reuse existing benches (6 total)
- Reduced storm water treatment areas



Base Concept

Preliminary Cost Analysis



▪ Concept Plan

▪ Construction Budget \$1,492,644

▪ Site Prep.	\$54,538
▪ Grading and Earthwork	\$60,201
▪ Drainage and Utilities	\$56,277
▪ Hardscape	\$352,768
▪ Gateway and Fencing	\$89,675
▪ Site Furnishing	\$20,528
▪ Play Equipment	\$399,786
▪ Irrigation and Planting	\$123,313
▪ Overhead and General Conditions	\$355,555

Reach Concept

Preliminary Cost Analysis



▪ Enhanced Concept Plan

▪ Construction Budget \$1,622,027

▪ Site Prep.	\$54,538
▪ Grading and Earthwork	\$60,201
▪ Drainage and Utilities	\$56,287
▪ Hardscape	\$363,436
▪ Gateway and Fencing	\$92,810
▪ Site Furnishing	\$38,586
▪ Play Equipment	\$468,851
▪ Irrigation and Planting	\$122,673
▪ Overhead and General Conditions	\$364,642

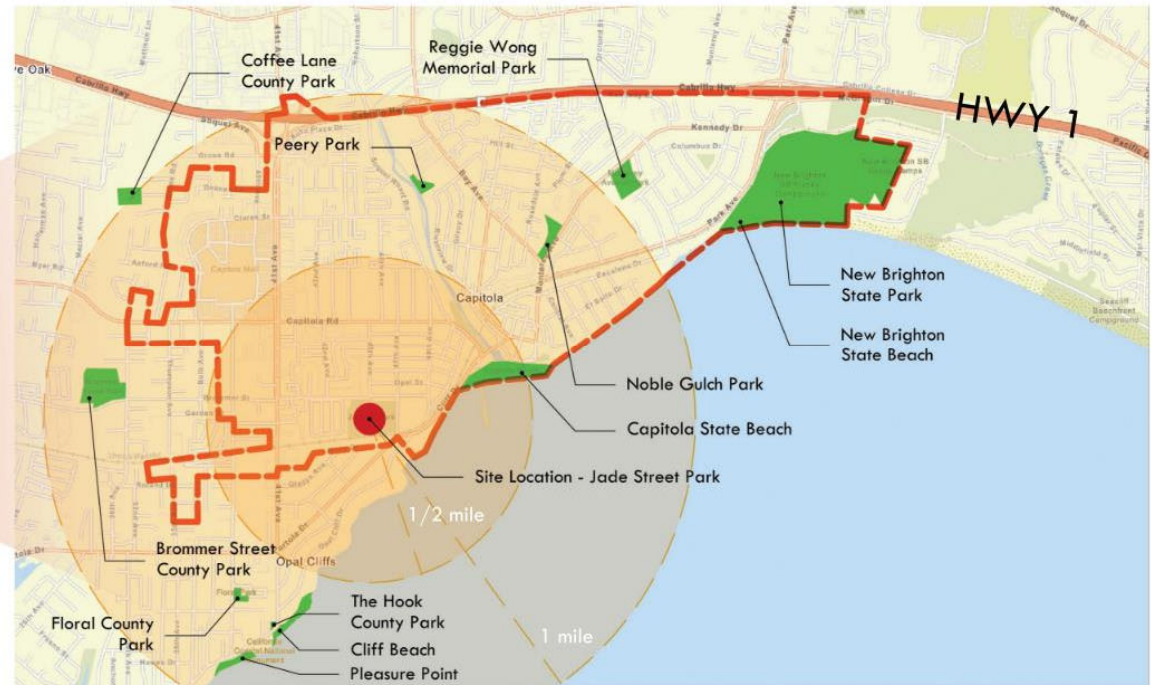
Enhanced Concept

Project Introduction



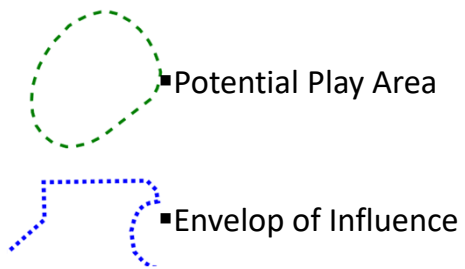
■ The purpose of this project is to develop a universally accessible (UA) playground at Jade Street Park. The proposed will replace and expand the existing and outdated playground that was installed in 1999 and 2007.

■ Project construction is not yet funded. The City is coordinating a fund-raising plan in conjunction with approval of a preferred concept.



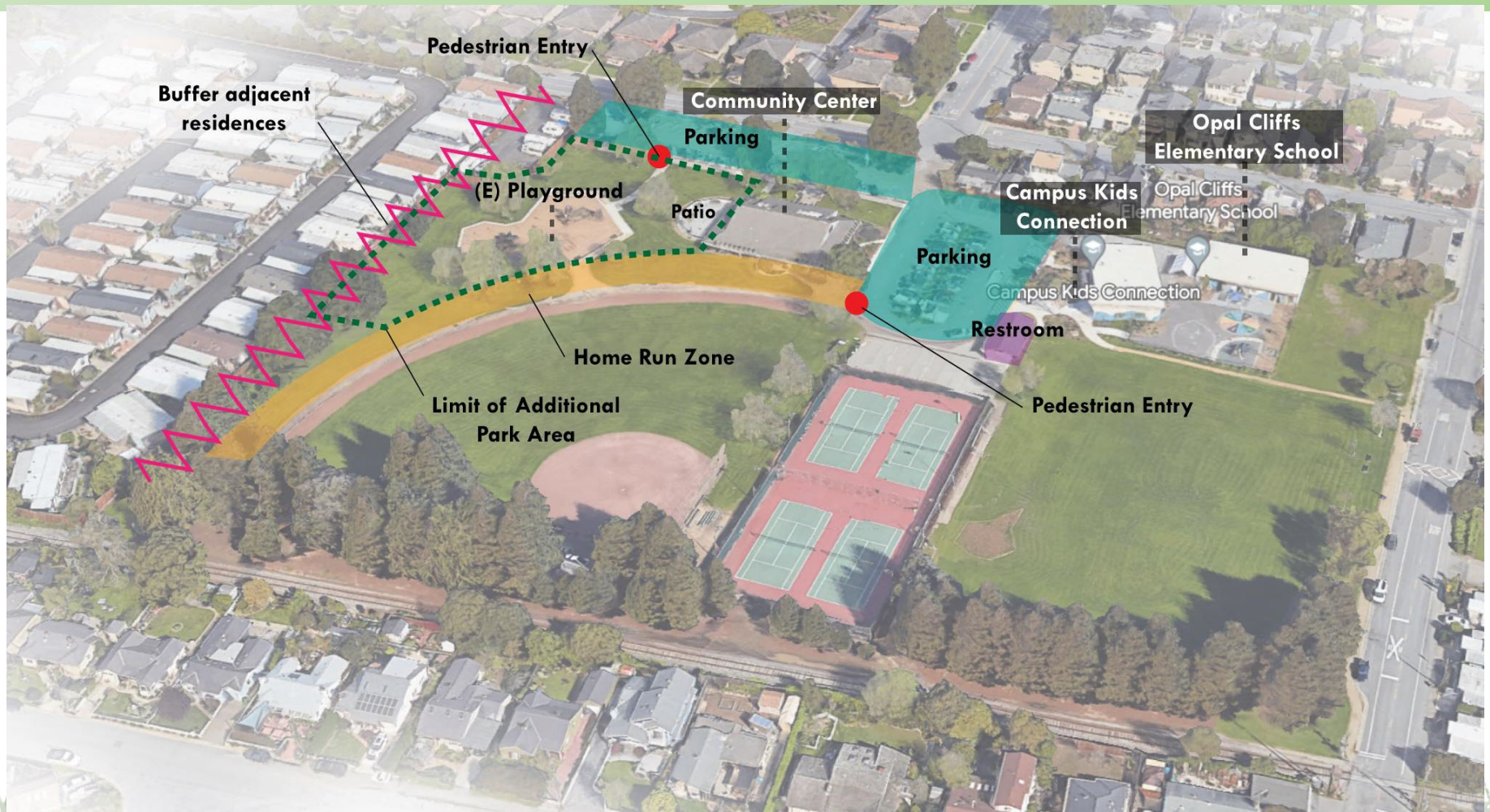
Jade Street Park – Universally Accessible Playground

Existing Site



Jade Street Park – Universally Accessible Playground

Site Analysis



Jade Street Park – Universally Accessible Playground

Community Input...Listening



First Pop-Up event held on Saturday in the park – March 25

Sign-in participants: **21** Total estimated Participants: **35**

First Survey closed April 5th

Total Participants: **27**

What we heard:

Top features: Play Events

Climbing/Sliding & Imagination Play

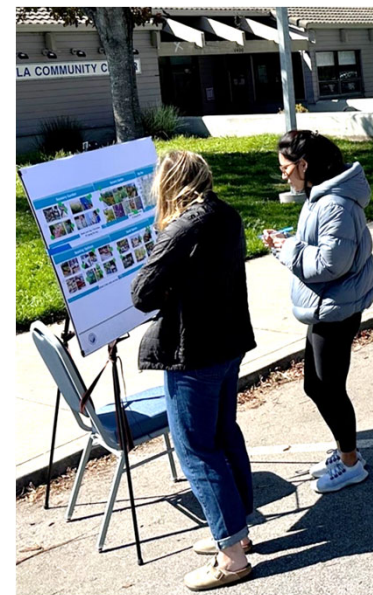
Top features: Social Events

Sensory Garden & Seating

Theme of comments:

Art murals Seating Pathways Native pond More plants

Pickle ball Wildlife Outdoor stage Dog walk/trail



Jade Street Park – Universally Accessible Playground

Pop Up...Listening

Play Features

Swing Zone



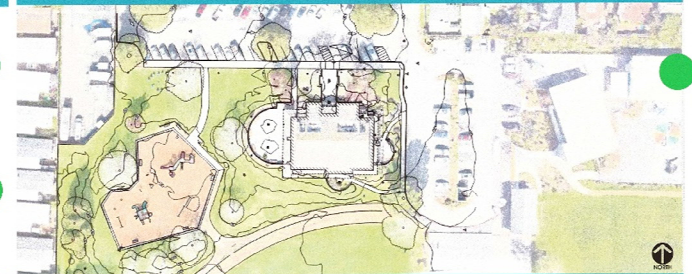
Select 3 that inspire you.

Motion Zone



Select 3 that inspire you.

Site Plan



Existing Conditions

Climbing Sliding Zone



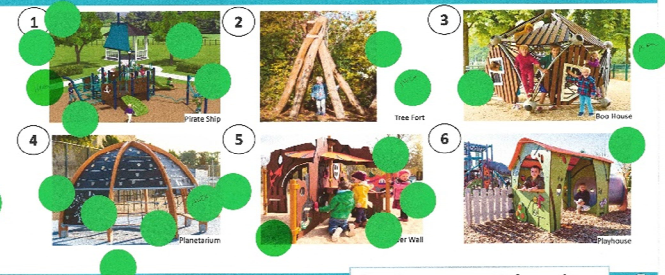
Select 3 that inspire you.

Balance & Strength Zone



Select 3 that inspire you.

Imagination Play



Rank your top 3 favorites.
#1 being the top.

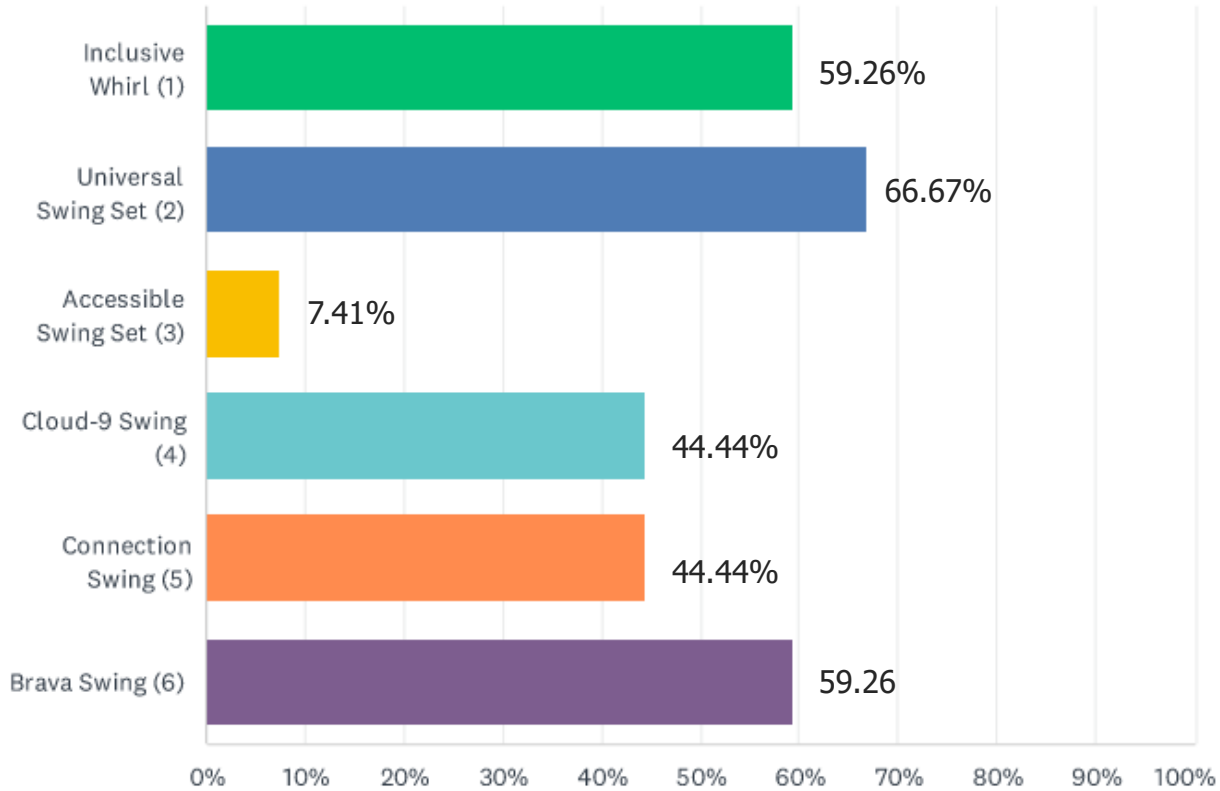


Jade Street Park – Universally Accessible Playground

Community Input Survey Results



Swing Zone



Universal Swing Set



Inclusive Whirl



Jade Street Park – Universally Accessible Playground

Community Input Design Development



2nd Community Meeting was held on April 25th
Pop-Up event held on Saturday in the park – April 29th

Sign-in participants: **12** Total estimated Participants: **36**

Survey closed May 3rd

Participants: **43**

What we heard:

Main Topics:

Seating	25 mentions
Picnic	22 mentions
Access	17 mentions
Pollinator Path	15 Mentions
Sensory Garden	11 mentions



Jade Street Park – Universally Accessible Playground

Community Input Summary



Theme analysis: 47 participants

