

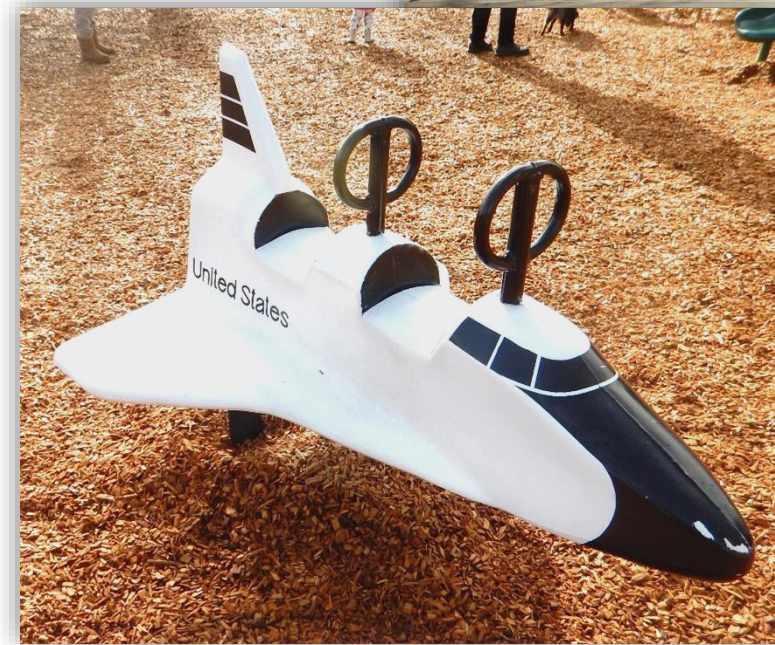


# Jade Street Park Universally Accessible Playground

Community Workshop #2  
April 25, 2023

# Presentation Points

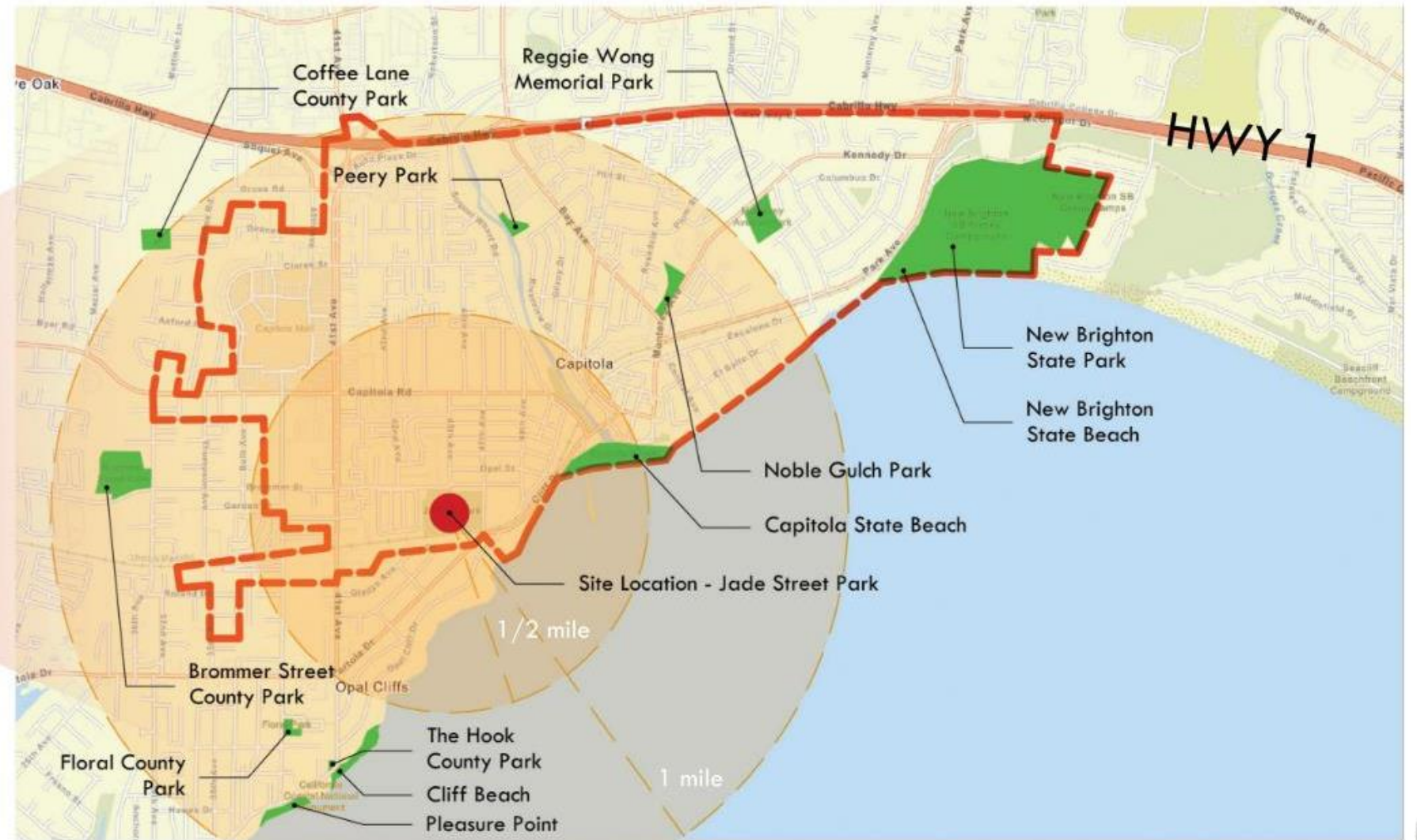
- **Welcome**
  - Project Introduction
- **Project Schedule**
- **Public Outreach**
  - Community Feedback
- **Design Concept No 1**
- **Design Concept No 2**
- **Park Features**
  - Play Features + Themes
  - Materials



# Project Introduction

■ The purpose of this project is to develop a universally accessible (UA) playground at Jade Street Park. The proposed will replace and potentially expand the playground existing and outdated playground that was installed in 1999 and 2007.

■ Project construction is not yet funded. The City will be coordinating a fund-raising program once a preferred concept is developed with the community and approved by Council.



# Universal Access

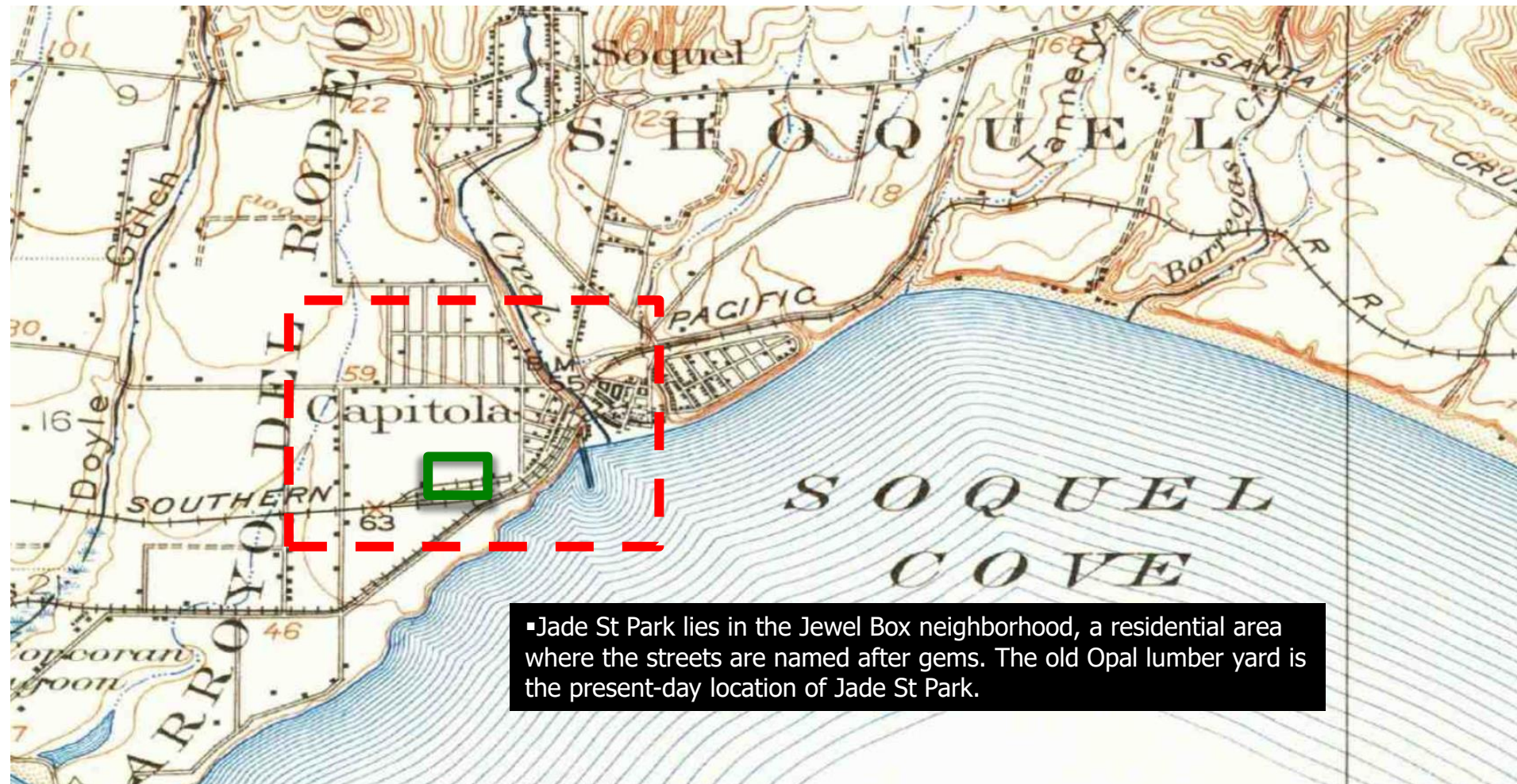
## Universally accessible: What does it mean?

Goal is to promote health and wellness in communities by providing the freedom of play for children and families of all abilities to play side-by-side.

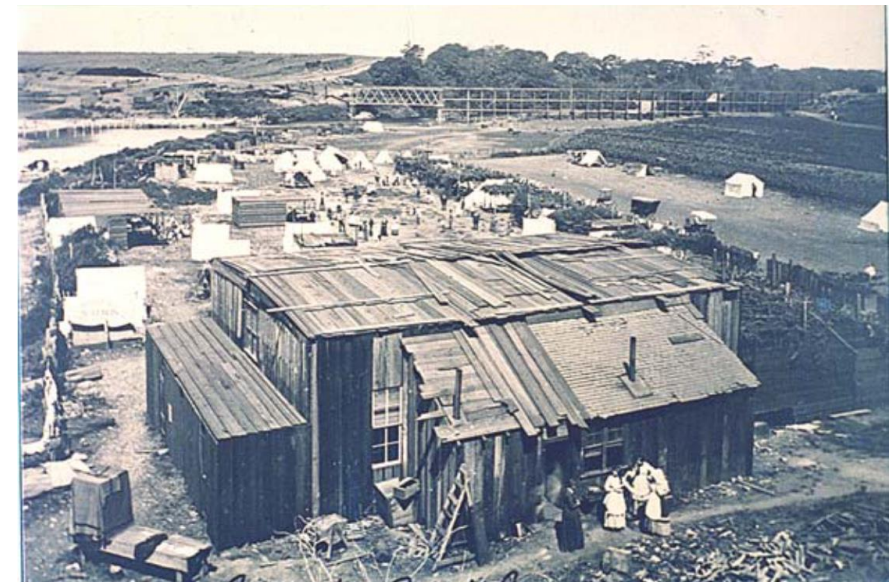
- Play is a critical part of the social, emotional, cognitive, and physical development of every child.
- Playgrounds not only allow children with disabilities the right to play, but also parents and caregivers, and seniors.
- Provides multiple forms of play
- Range of risks
- Range of sensory engagement



# Site History



▪ Capitola is the ancestral home of the Aptos, Casjataca, and Uypi peoples. The Uypi people inhabited villages along Soquel Creek, named after one of their leaders.



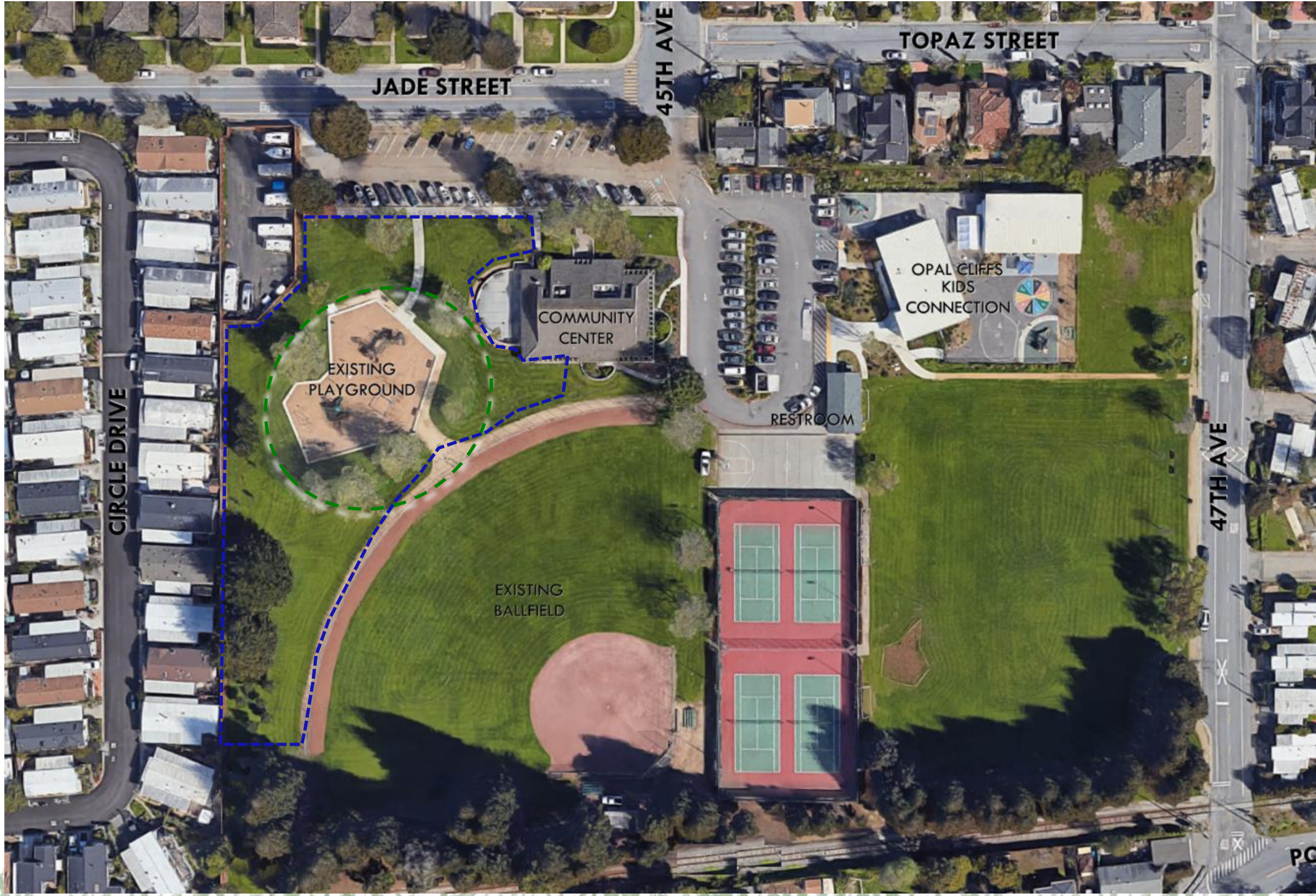
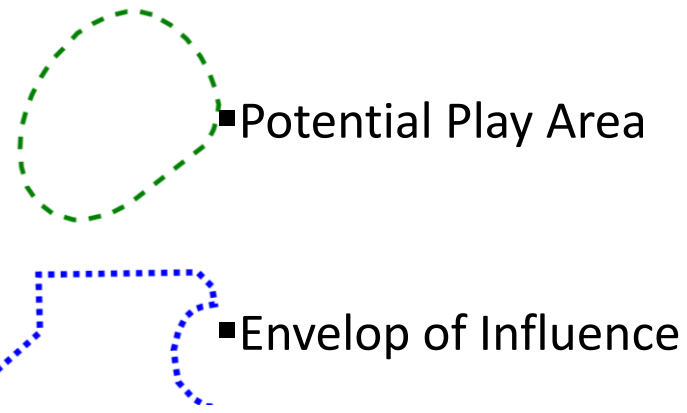
▪ In the late 1800s Capitola found success with seaside and camping resorts, with Camp Capitola founded in 1874.



▪ Hotel Capitola was built in the 1890s along with increased residential and commercial development, developed by the Hihn Company.

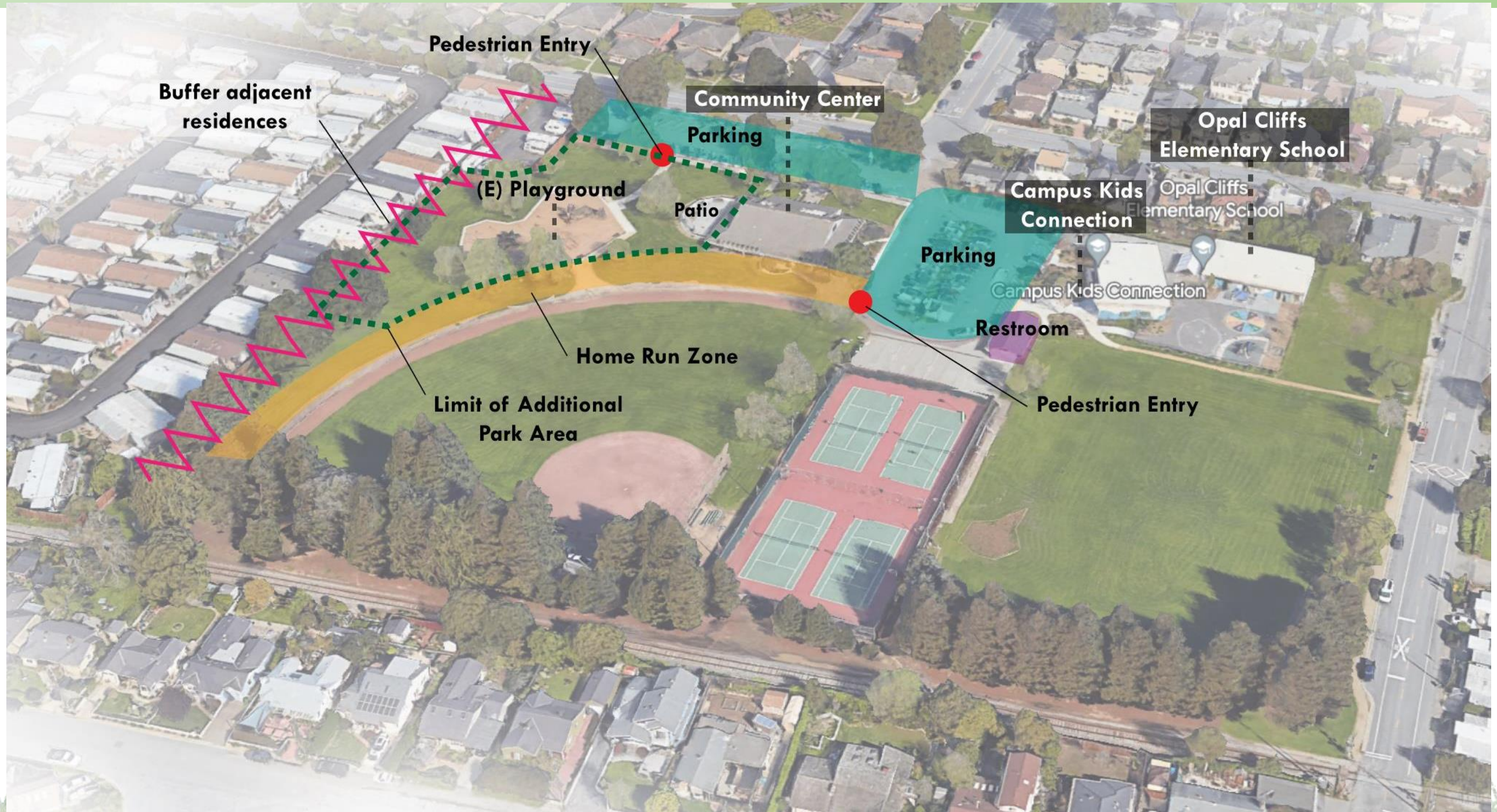


# Existing Site



Jade Street Park – Universally Accessible Playground

# Site Analysis



Jade Street Park – Universally Accessible Playground

# Project Schedule



## ■ Community Outreach

- Community Workshop No. 1

Rescheduled to March 28 due to weather

- Pop Up at the Park

March 25<sup>th</sup>

- **Community Workshop No. 2**

**April 25<sup>th</sup>**

- Pop up at the Park No. 2

April 29<sup>th</sup>

## ■ Preferred Concept Design

- City Council Presentation

July 2023





# Pop Up at the Park No.1

First Pop-Up event held on Saturday in the park – March 25

Sign-in participants: **21** Total estimated Participants: **35**

## What we heard:

Top features: Play Events  
**Climbing/Sliding & Imagination Play**

Top features: Social Events  
**Sensory Garden & Seating**

## Theme of comments:

Art murals    Seating    Pathways    Native pond    More plants  
Pickle ball    Wildlife    Outdoor stage    Dog walk/trail



# Pop Up Results

## Play Features

### Swing Zone



Select 3 that inspire you.

### Motion Zone



Select 3 that inspire you.

### Site Plan



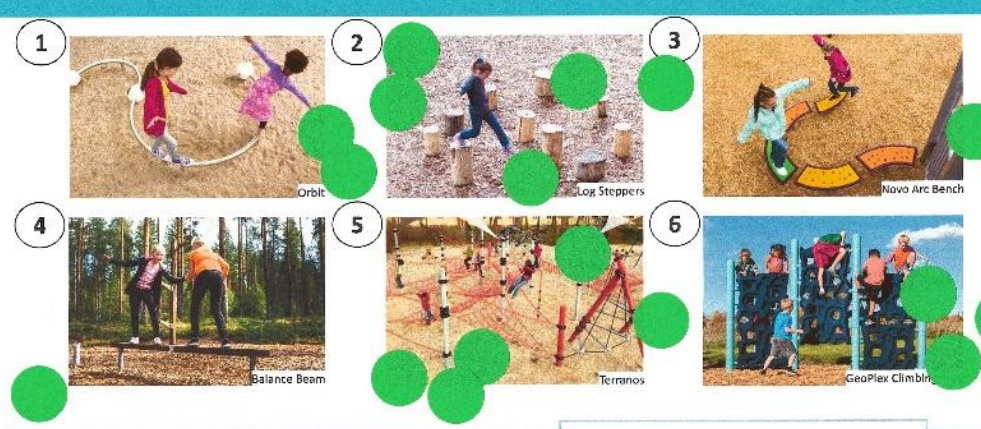
Existing Conditions

### Climbing Sliding Zone



Select 3 that inspire you.

### Balance & Strength Zone



Select 3 that inspire you.

### Imagination Play

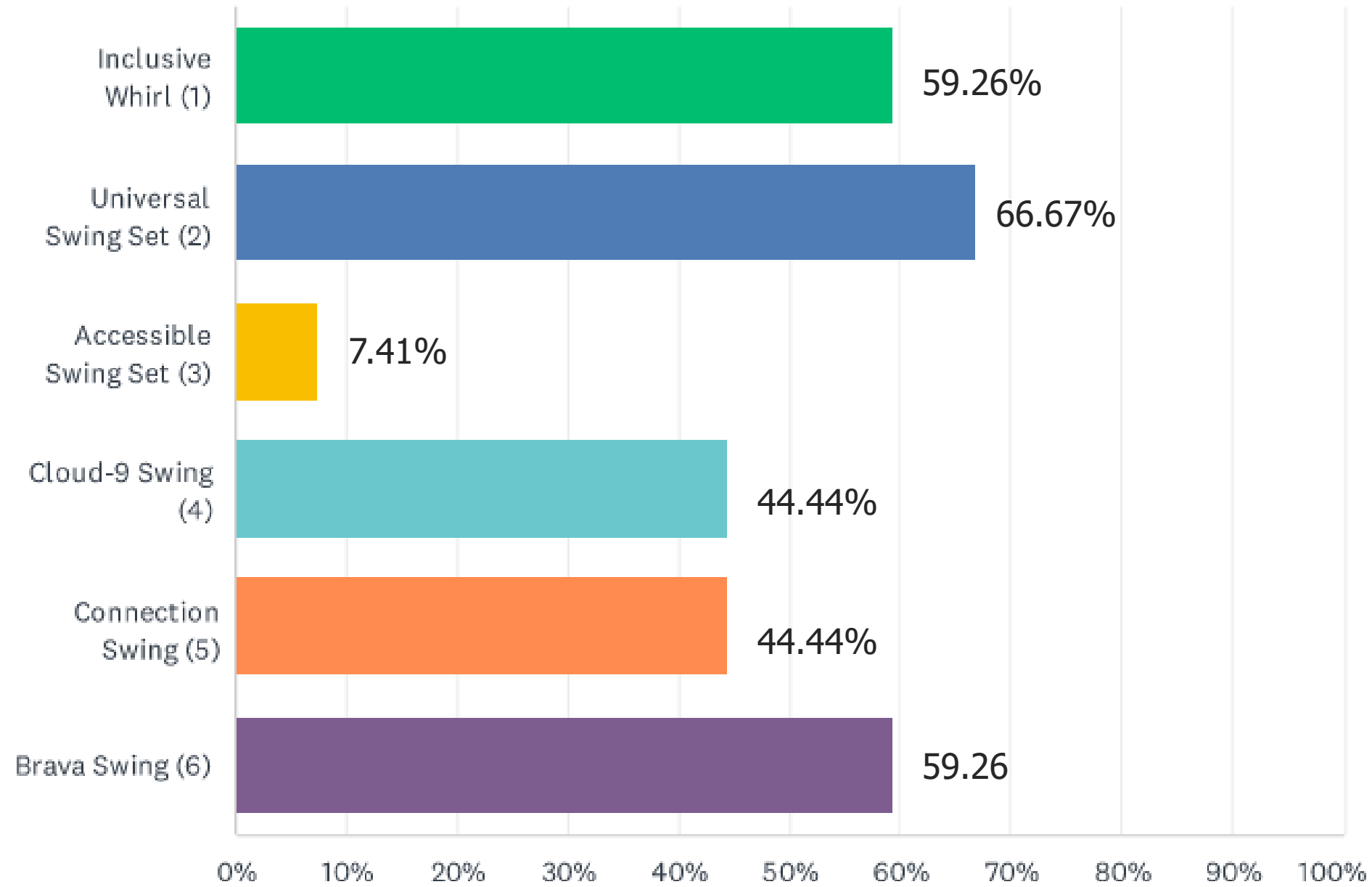


Rank your top 3 favorites.  
#1 being the top.



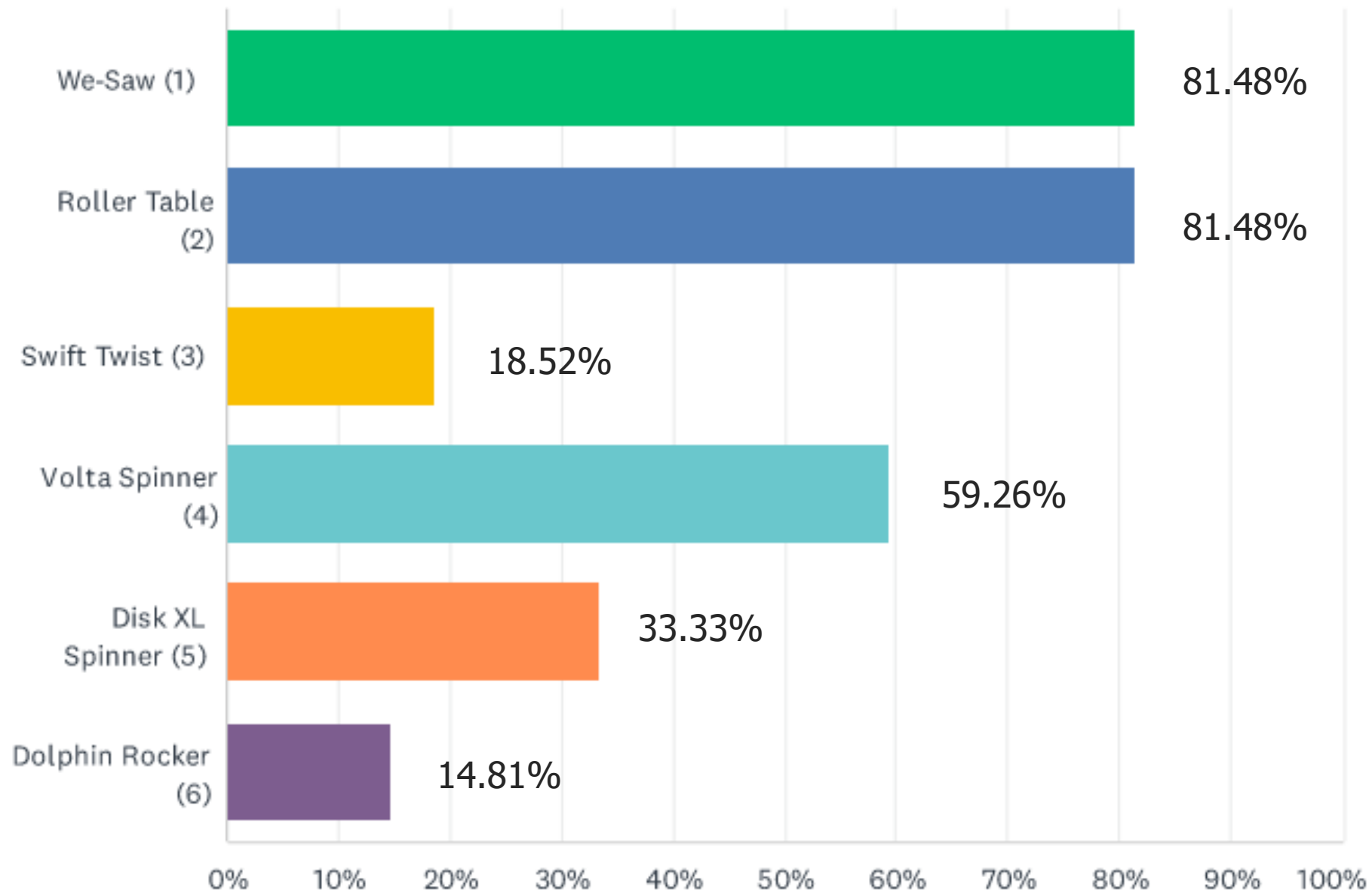
# Community Input Results

## Swing Zone



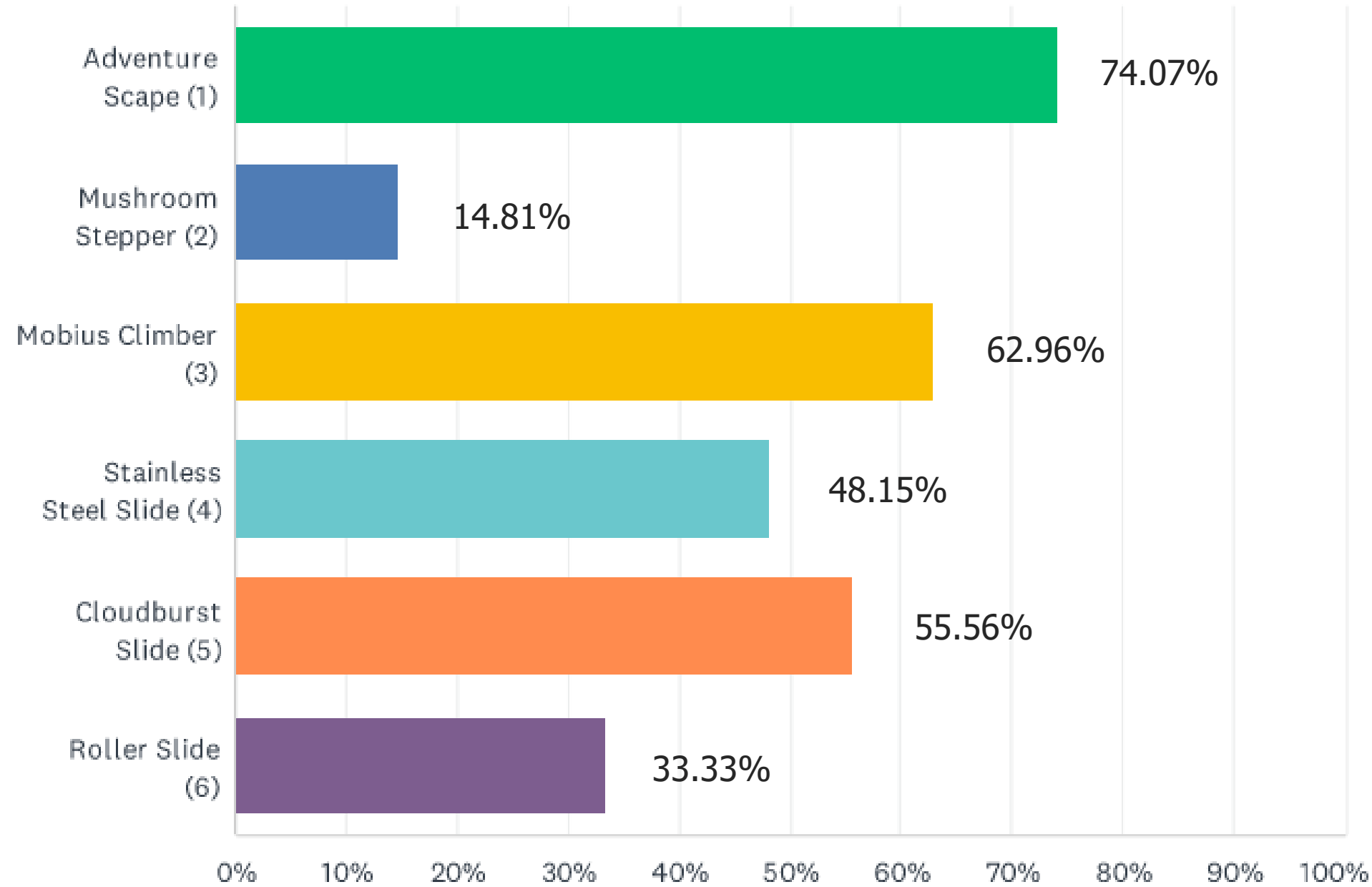
# Community Input Results

## Motion Zone



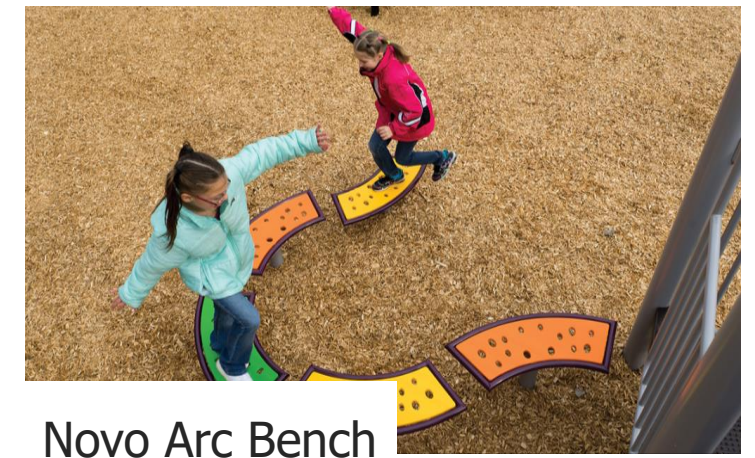
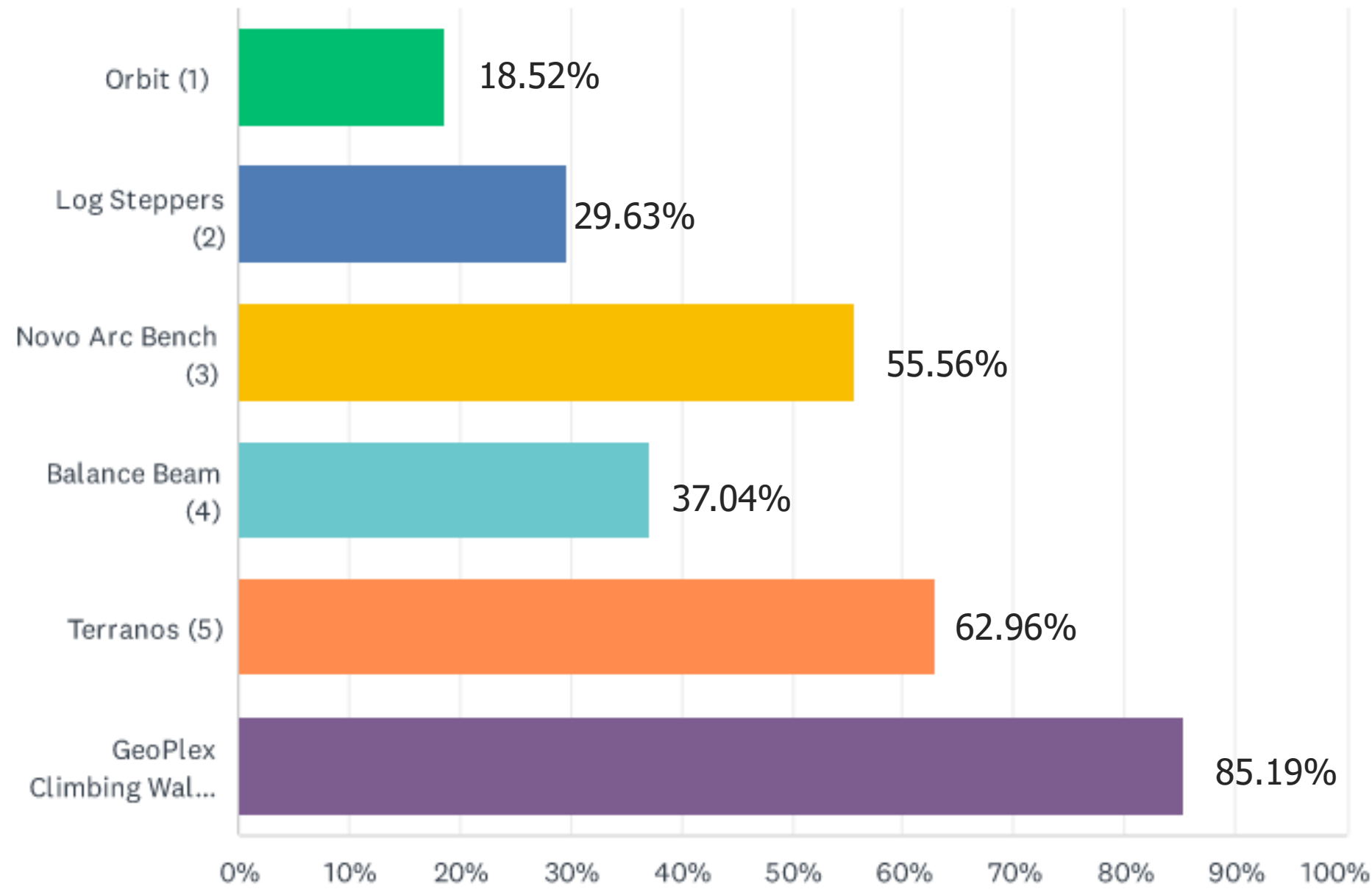
# Community Input Results

## Climbing Sliding Zone



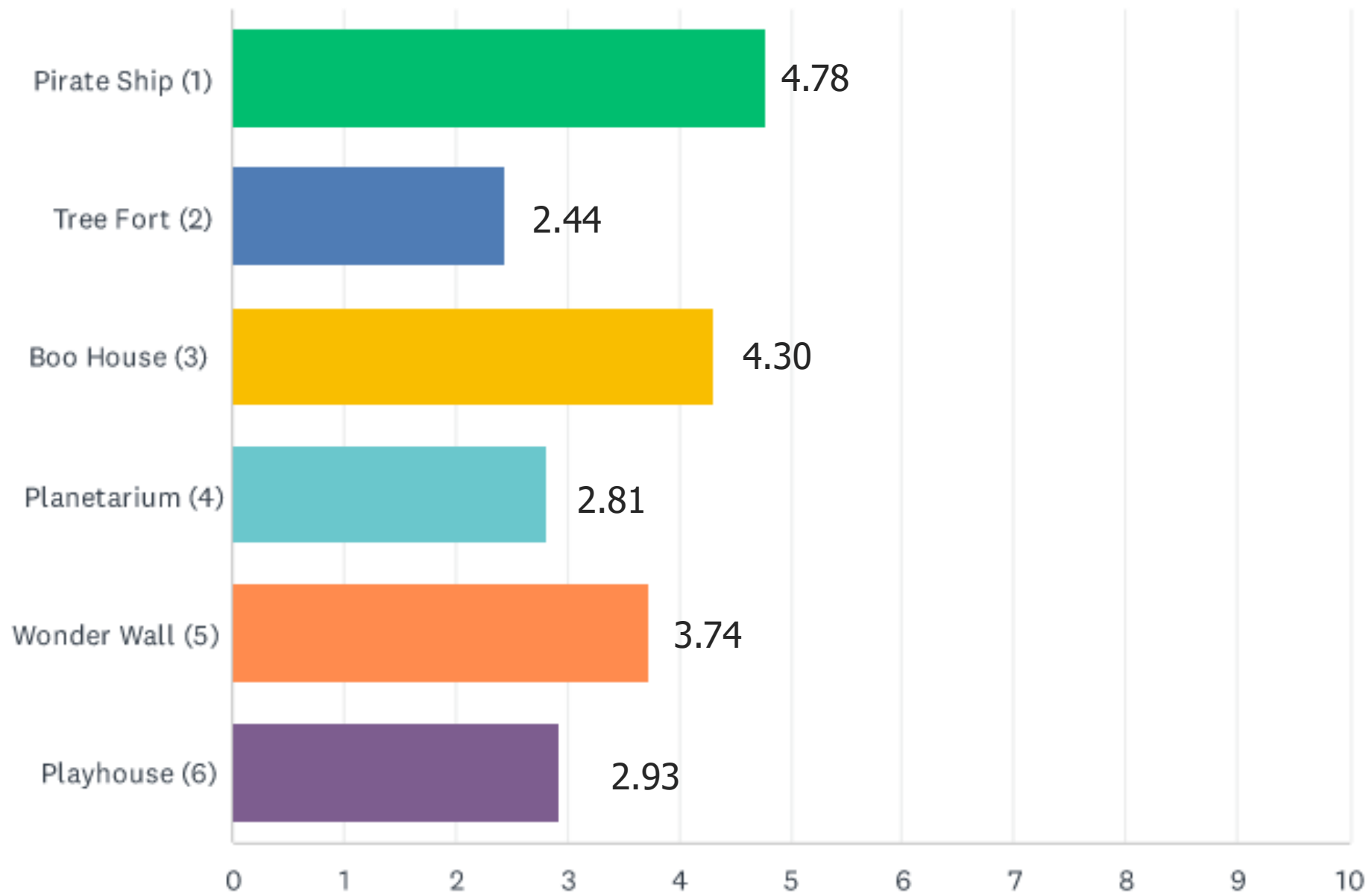
# Community Input Results

## Balance & Strength Zone



# Community Input Results

## Imagination Play



# Pop Up at the Park No.1

## Social Spaces

### Sensory Garden



Rank your top 3 favorites.  
#1 being the top.

### Sensory Garden



Rank your top 3 favorites.  
#1 being the top.

### Site Plan



Existing Conditions

### Seating Options



Select 3 that suits you best.

### Social Spaces



Rank your top 3 favorites.  
#1 being the top.

### Game Zone



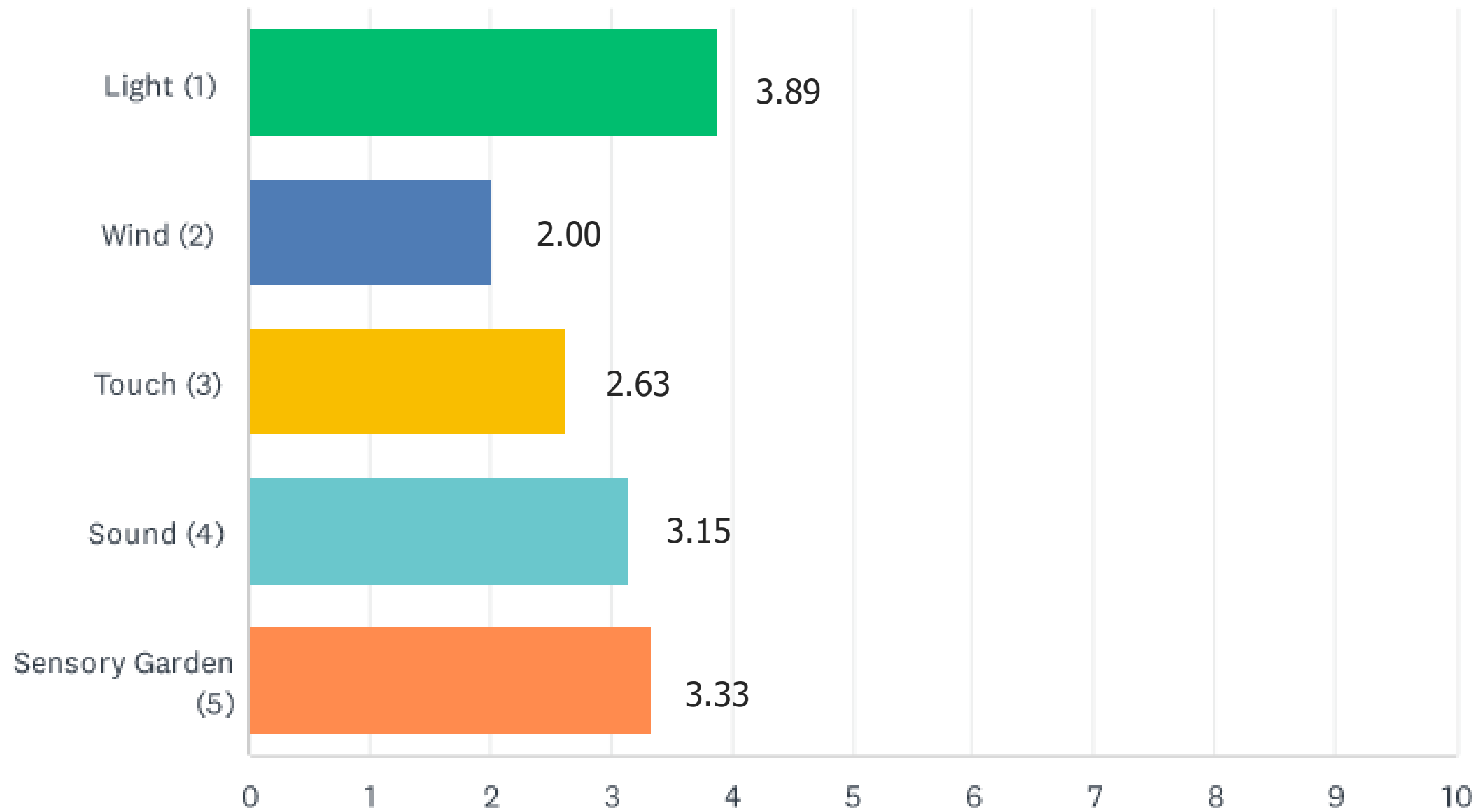
Would you like to see game options at the playground?  
 Yes  No  
 If games are included, rank your top 3 activities.  
 #1 being the top.





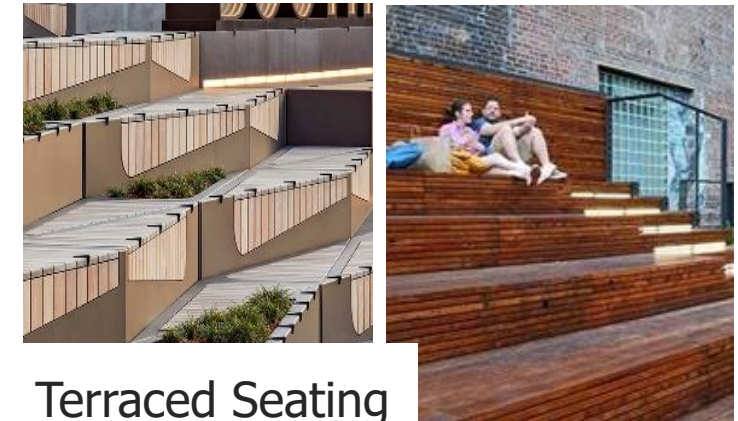
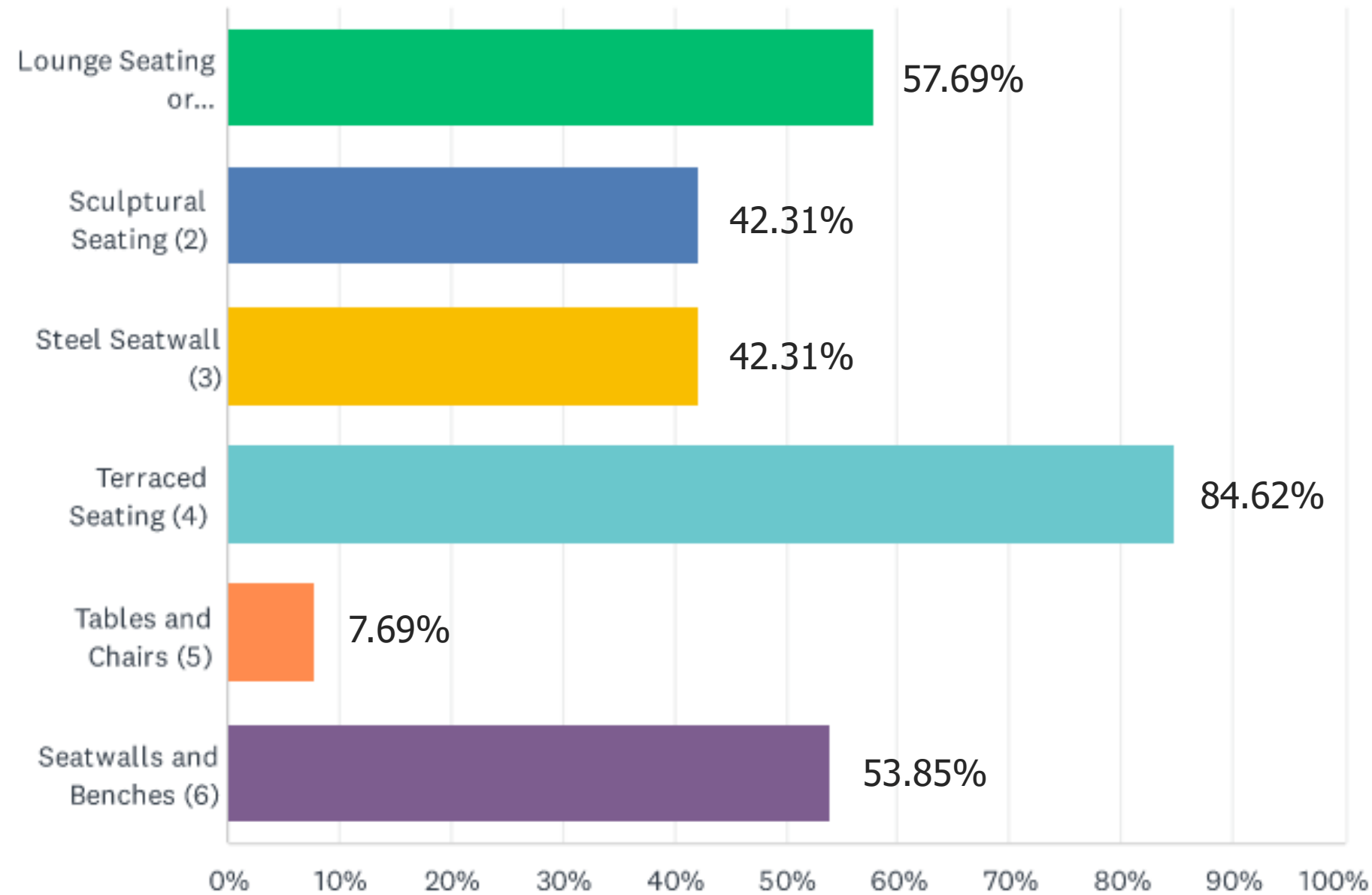
# Community Input Results

## Sensory Garden



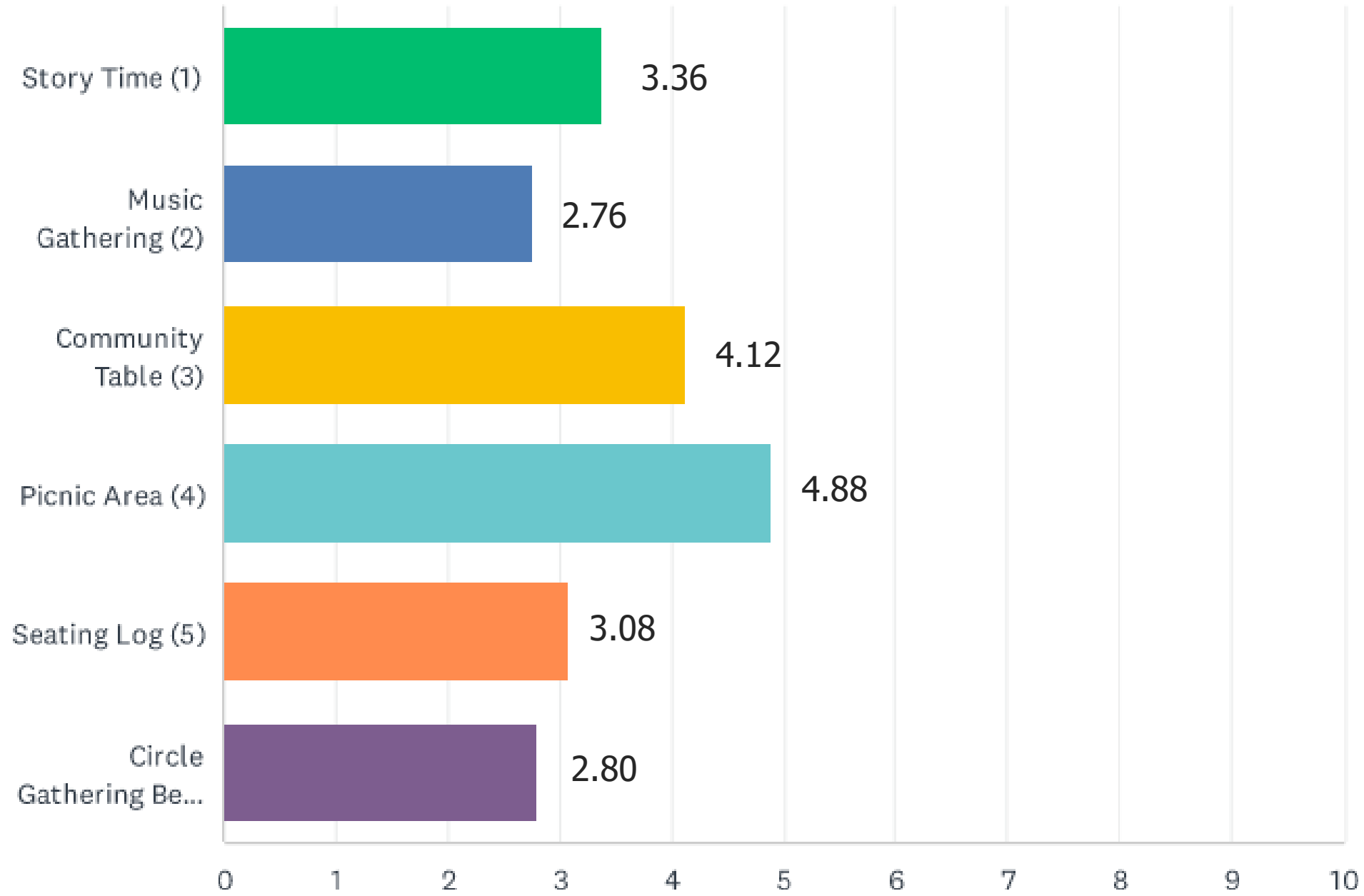
# Community Input Results

## Seating Options



# Community Input Results

## Social Spaces



Picnic Area



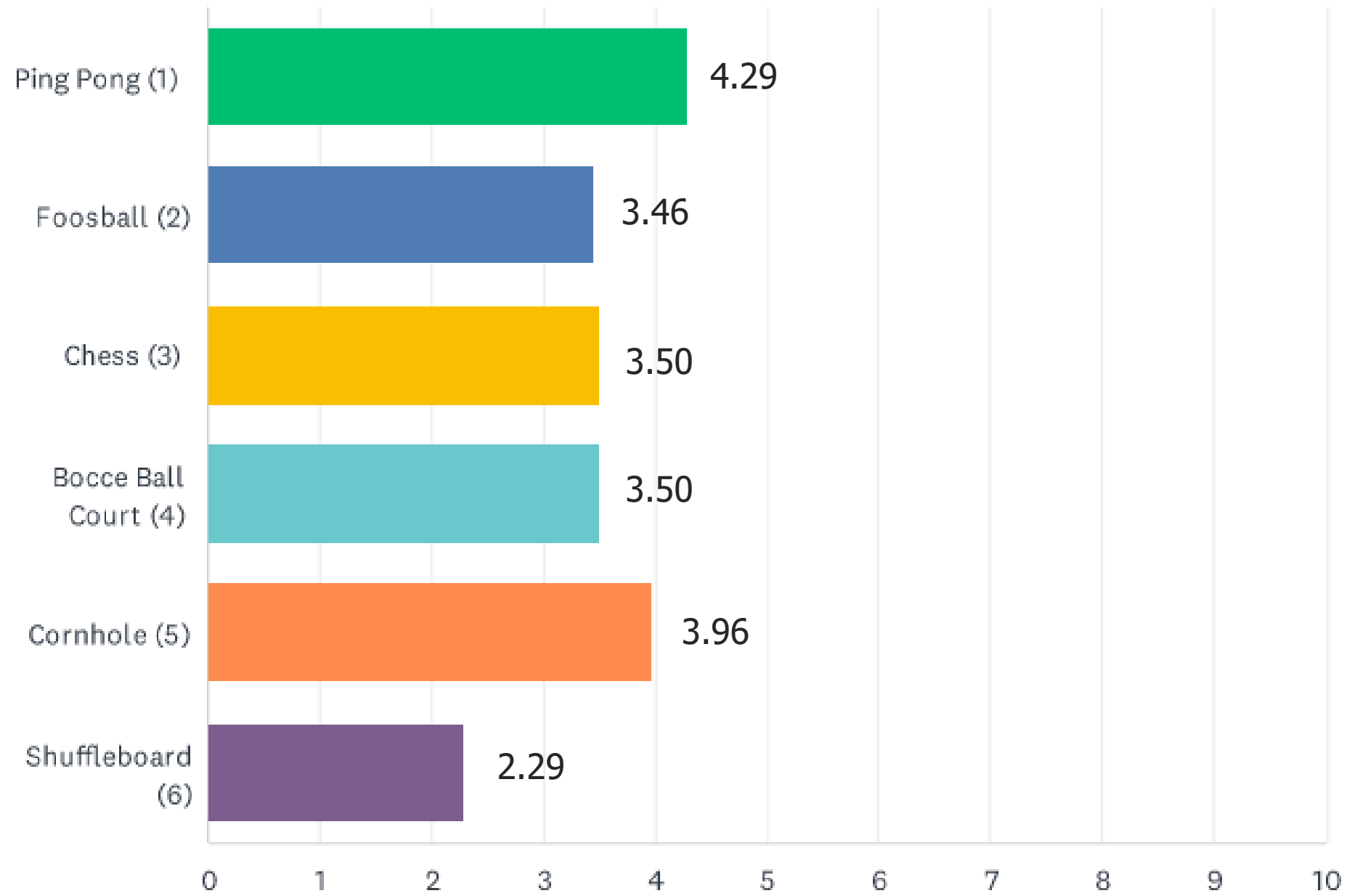
Community Table



Story Time

# Community Input Results

## Game Zone



Ping Pong



Cornhole



Chess

# Community Input Summary

## Top Play Features

- Swings & Inclusive Whirl
- Mult-user See Saw & Roller Table
- Rock and Rope Climber & Rock Wall Feature
- Climbing Wall & Rope Course
- Pirate Ship & Cozy Playhouse

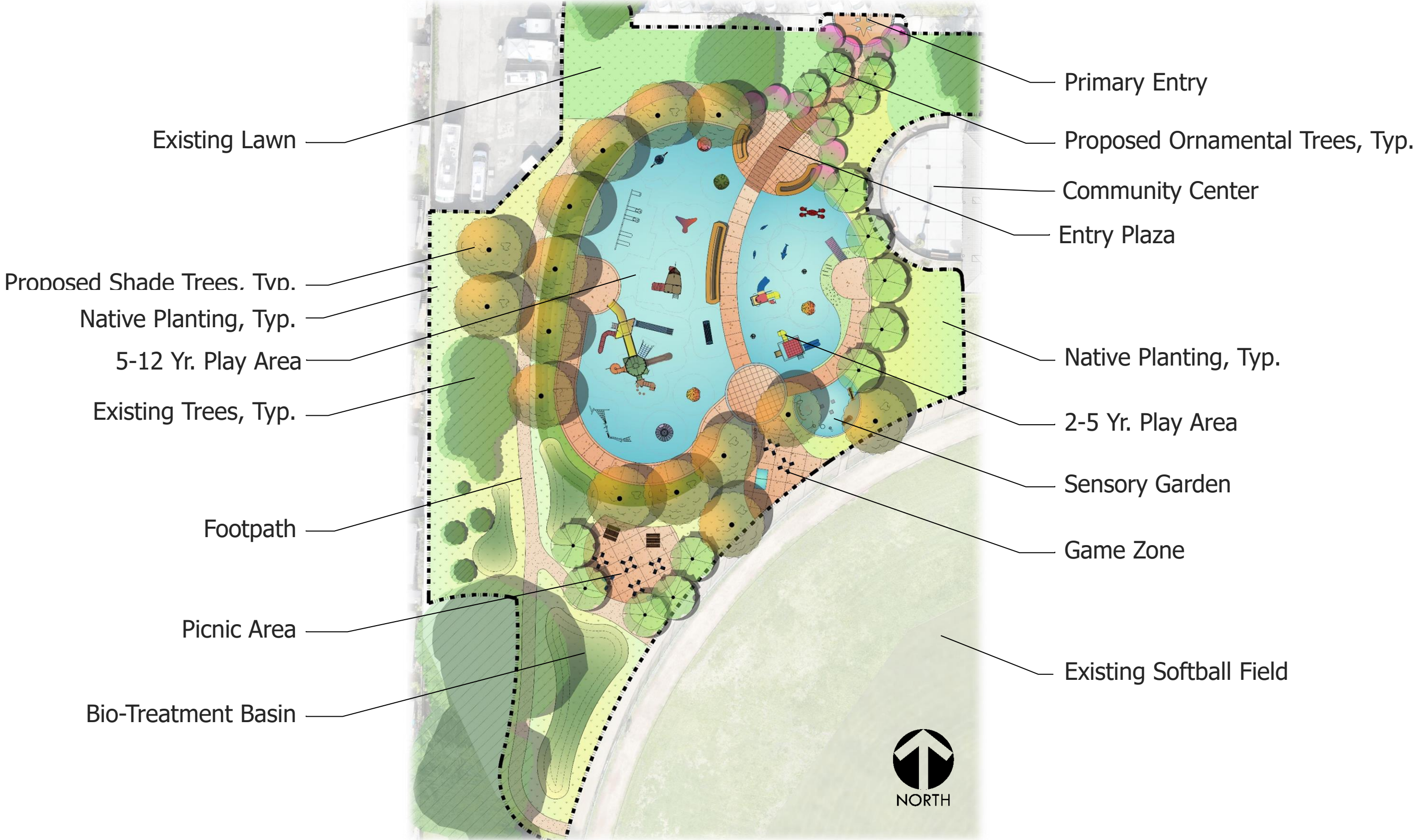


## Top Social Features

- Light play & Garden Pollinators
- Terraced and Lounge Seating
- Picnic Spaces & Community Table
- Ping Pong and Corn Hole Games



# Design Concept A



# Play Features



# Play Features



Jade Street Park – Universally Accessible Playground



# Play Features



Jade Street Park – Universally Accessible Playground

# Play Features



Jade Street Park – Universally Accessible Playground

# Play Features



Jade Street Park – Universally Accessible Playground

# Play Features

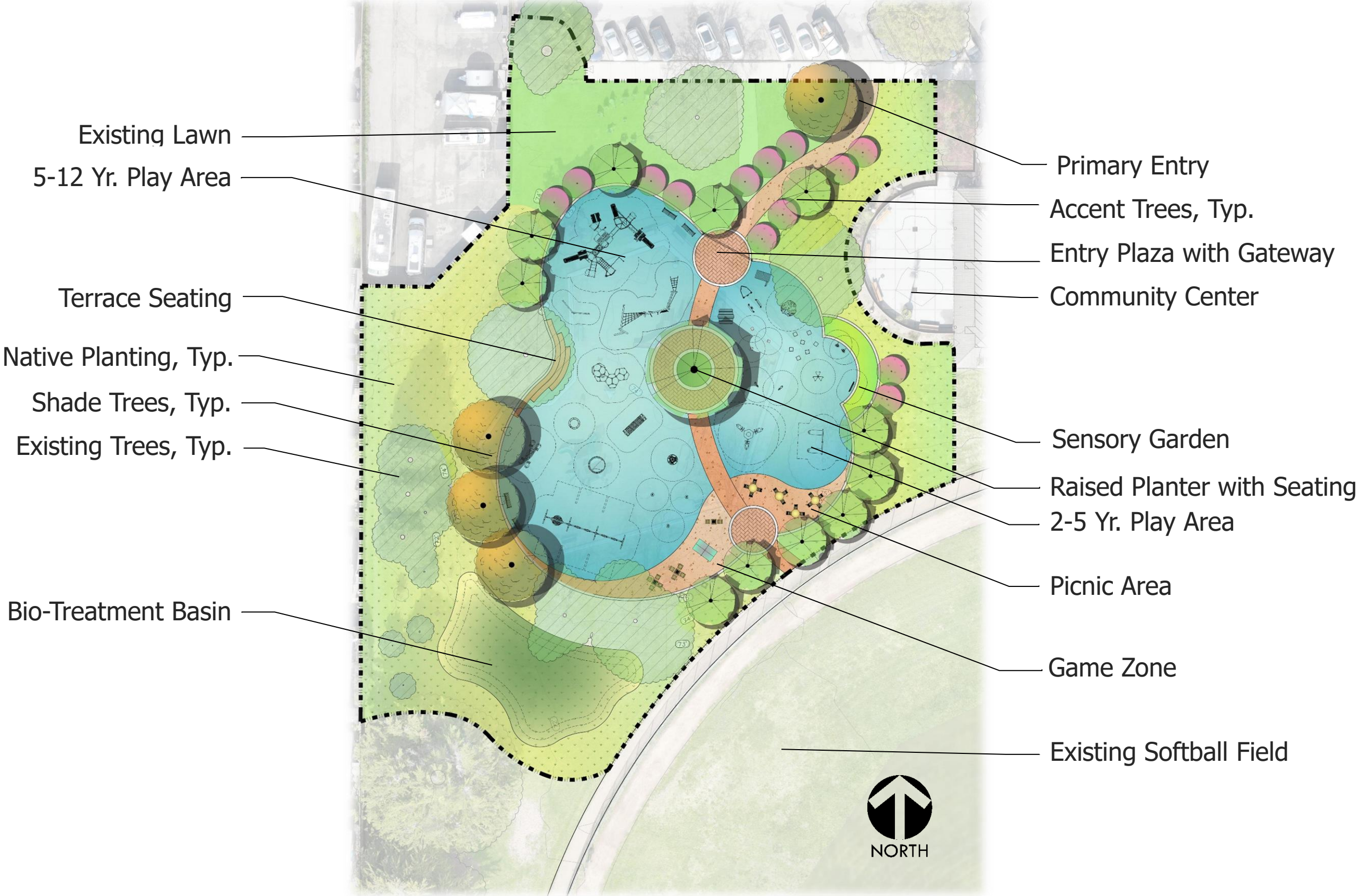


Jade Street Park – Universally Accessible Playground

# Play Features



# Design Concept B



# Play Features



Jade Street Park – Universally Accessible Playground

# Play Features





# Play Features



Jade Street Park – Universally Accessible Playground

# Play Features



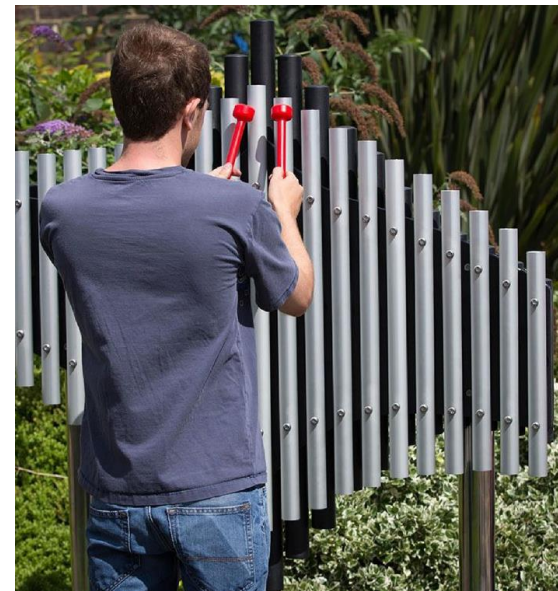
Jade Street Park – Universally Accessible Playground

# Play Features



Jade Street Park – Universally Accessible Playground

# Sensory + Sound Features



# Paving + Materials



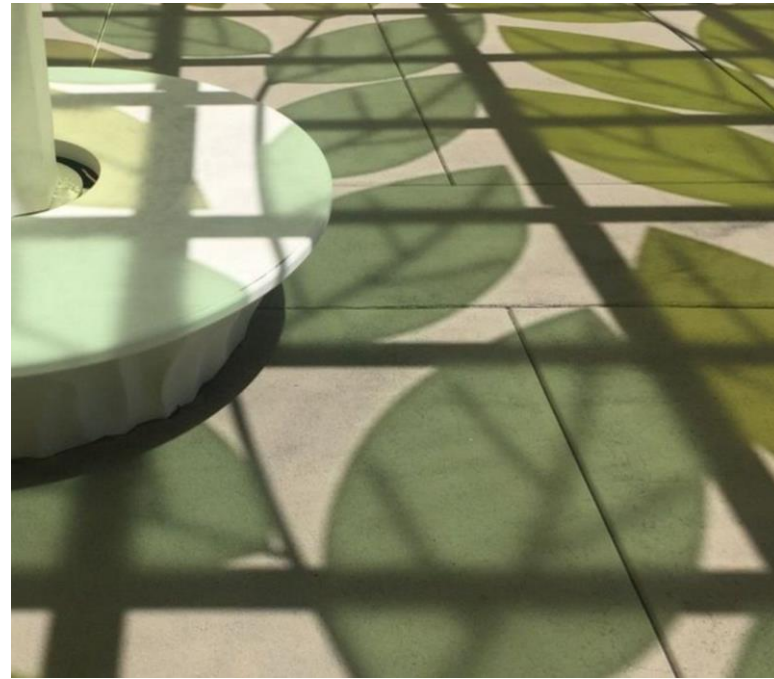
Jade Street Park – Universally Accessible Playground

# Pollinator Garden + Planting

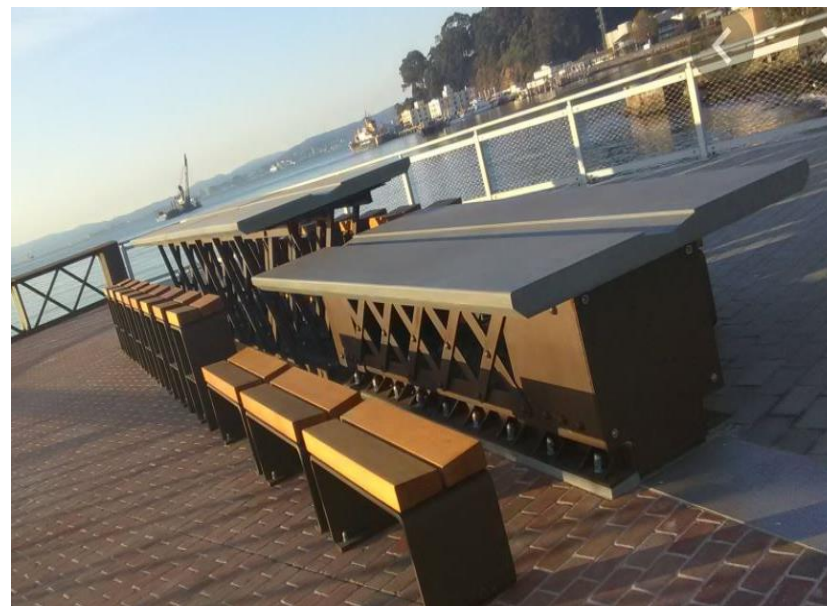


Jade Street Park – Universally Accessible Playground

# Shade Structures



# Social Spaces



Jade Street Park – Universally Accessible Playground



# Design Concepts



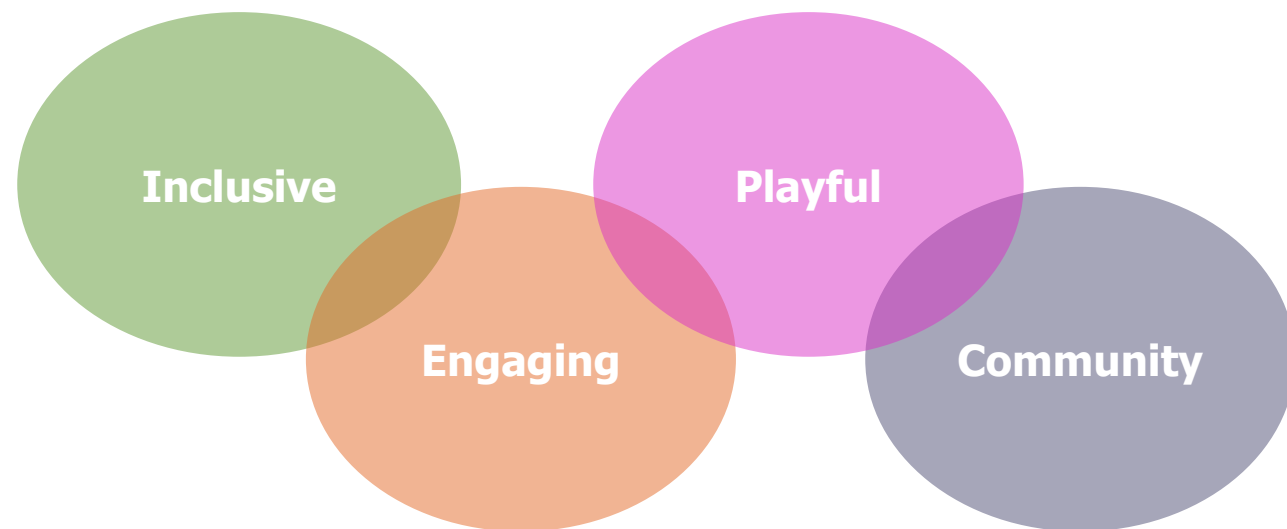
# Next Steps

- **Pop up at the park No. 2**
  - **Saturday, April 29**
  - **11am – 1pm at Jade Street Park**
- **On-line survey**
  - Available tomorrow, Wednesday, April 26
  - Please share the link of the online survey with other community members and join our design process!



# Online Survey

- Please share with your friends and neighbors who could not come tonight.
  - The online survey will be **open from April 26-May 10 2023**



- What excites you most about concept A?
- What excites you most about concept B?
- Preferred theme: A) marine and shoreline B) forest and garden C) \_\_\_\_\_
- Please provide any additional comments you would like to share about this project.

# Thank You!



## Jade Street Park

Universally Accessible Playground

Community Workshop No. 2



Your engagements are valuable for the design process.

Please don't forget to vote for your community and share your comments on the online survey.

The online survey will be available from

**April 26<sup>th</sup> – May 10<sup>th</sup> 2023**



Jade Street Park – Universally Accessible Playground