

1 SITE PLAN
SCALE: 1" = 20'

SEAL

THE ARCHITECT MUST BE NOTIFIED OF ANY DISCREPANCY IN DIMENSIONS, FIELD CONDITIONS OR OTHER INFORMATION THAT IS CONTAINED IN AND/OR DIFFERS FROM THESE DOCUMENTS.

THESE DOCUMENTS ARE THE PROPERTY OF THE ARCHITECT AND MAY NOT BE USED OR REPRODUCED WITHOUT WRITTEN CONSENT. THE ARCHITECT DISCLAIMS ANY RESPONSIBILITY RESULTING FROM UNAUTHORIZED USE.

COPYRIGHT STARTS FROM THE DATE OF THE EARLIEST CONTRACT THROUGH CONSTRUCTION DOCUMENTS.

CAPITOLA COMMUNITY CENTER REMODEL

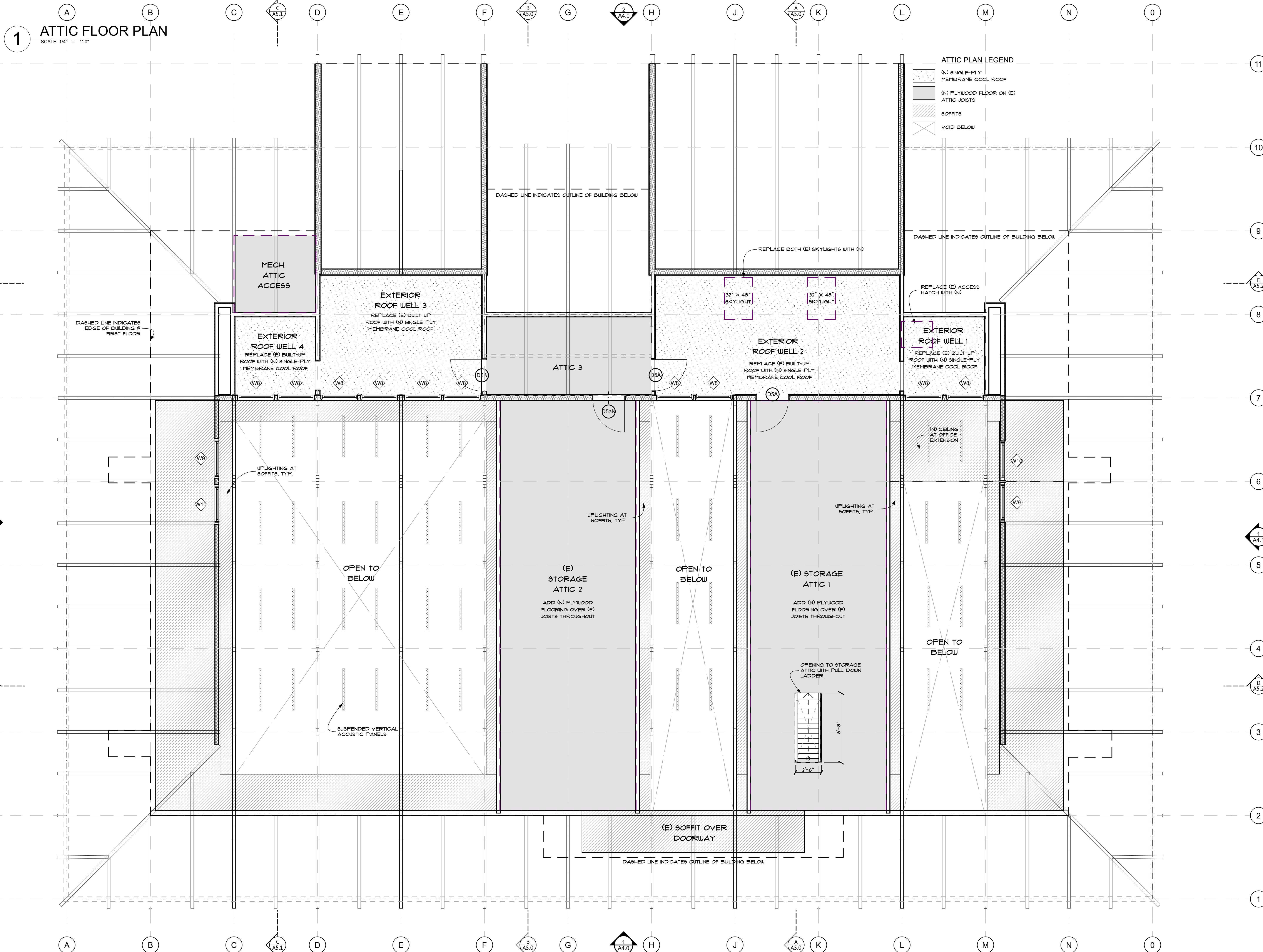
4400 JADE STREET
CAPITOLA, CA 95010

IF THE ABOVE DIMENSION DOES NOT MEASURE ONE INCH (1") EXACTLY, THIS DRAWING WILL HAVE BEEN ENLARGED OR REDUCED, AFFECTING ALL LABELED SCALES.

BY	REVISIONS	DATE
	CONCEPTUAL DESIGN SET	5/15/23

Date:	5/15/23
Scale:	AS NOTED
Drawn:	
Job:	
Sheet	

ARCHICAD MASTERTEMPLATE (TM) BY BOBROW CONSULTING GROUP | ALL RIGHTS RESERVED | WWW.BOBROW.COM | WWW.ARCHICADTEMPLATE.COM



BOONE LOW RATLIFF ARCHITECTS, INC.
157 VAN NESS AVE | SANTA CRUZ CA 95060

THE ARCHITECT MUST BE NOTIFIED OF ANY DISCREPANCY IN DIMENSIONS, FIELD CONDITIONS OR OTHER INFORMATION THAT IS CONTAINED IN AND/OR DIFFERS FROM THESE DOCUMENTS.

THESE DOCUMENTS ARE THE PROPERTY OF THE ARCHITECT AND MAY NOT BE USED OR REPRODUCED WITHOUT WRITTEN CONSENT. THE ARCHITECT DISCLAIMS ANY RESPONSIBILITY RESULTING FROM UNAUTHORIZED USE.

COPYRIGHT STARTS FROM THE DATE OF THE EARLIEST CONTRACT THROUGH CONSTRUCTION DOCUMENTS.

CAPITOLA COMMUNITY CENTER REMODEL

**4400 JADE STREET
CAPITOLA, CA 95010**

IF THE ABOVE DIMENSION DOES NOT MEASURE ONE INCH (1") EXACTLY, THIS DRAWING WILL HAVE BEEN ENLARGED OR REDUCED, AFFECTING ALL LABELED SCALES.

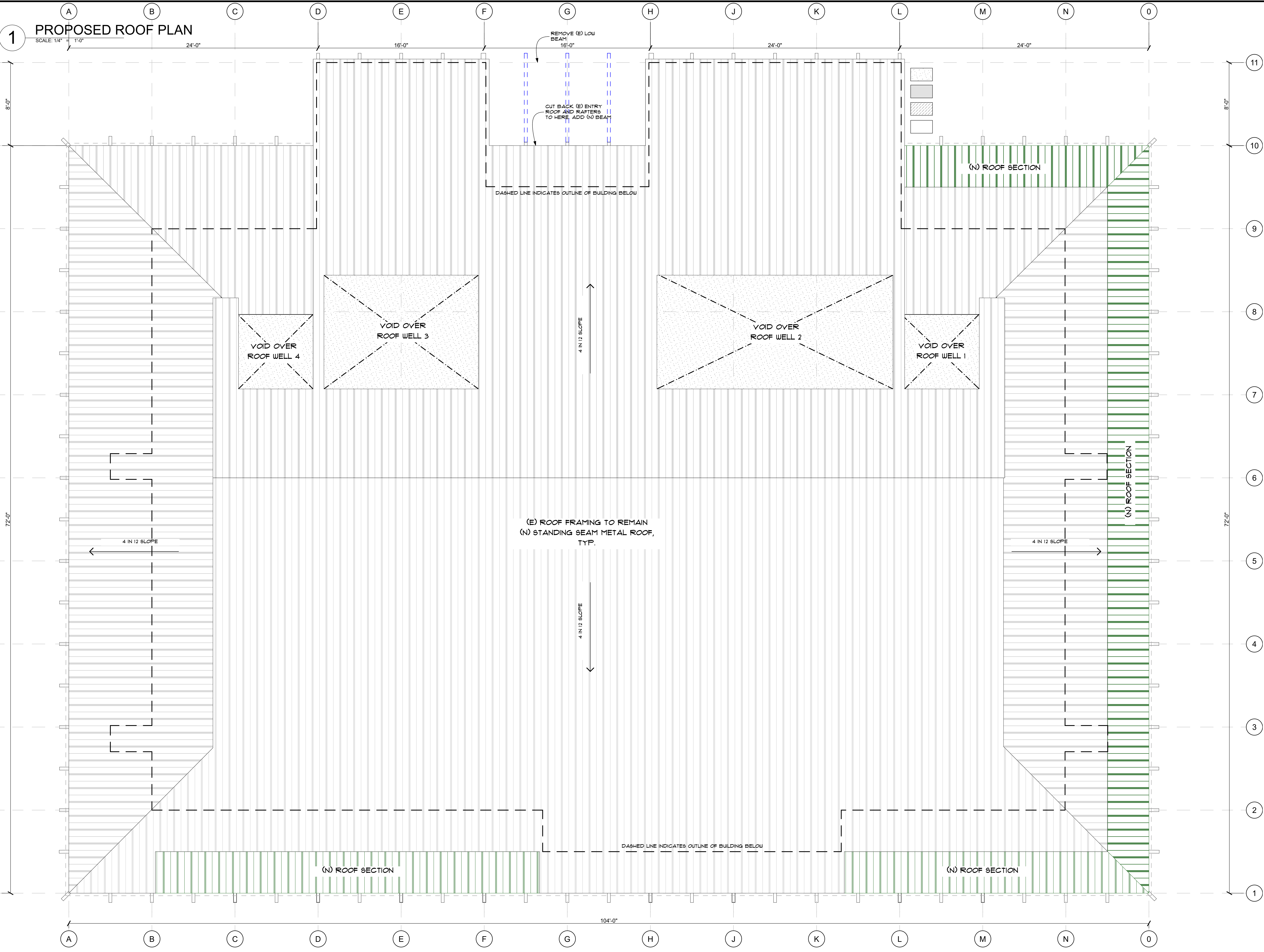
BY	REVISIONS	DATE
	CONCEPTUAL DESIGN SET	5/15/23

Date: 5/15/23
Scale: AS NOTED
Drawn:
Job:
Sheet:

A3.1
Plotted On: 5/15/23

PROPOSED ATTIC PLAN

ARCHICAD MASTERTEMPLATE (TM) BY BOBROW CONSULTING GROUP | ALL RIGHTS RESERVED | WWW.BOBROW.COM | WWW.ARCHICADTEMPLATE.COM
 \Users\kshen\Dropbox\Capitola Community Center Remodel\Drawings\Capitola Community Center Remodel\051123.dwg



BOONE LOW RATLIFF
 ARCHITECTS, INC.
 157 VAN NESS AVE | SANTA CRUZ CA 95060

SEAL

THE ARCHITECT MUST BE NOTIFIED OF ANY DISCREPANCY IN DIMENSIONS, FIELD CONDITIONS OR OTHER INFORMATION THAT IS CONTAINED IN AND/OR DIFFERS FROM THESE DOCUMENTS.

THESE DOCUMENTS ARE THE PROPERTY OF THE ARCHITECT AND MAY NOT BE USED OR REPRODUCED WITHOUT WRITTEN CONSENT. THE ARCHITECT DISCLAIMS ANY RESPONSIBILITY RESULTING FROM UNAUTHORIZED USE.

COPYRIGHT STARTS FROM THE DATE OF THE EARLIEST CONTRACT THROUGH CONSTRUCTION DOCUMENTS.

CAPITOLA COMMUNITY CENTER REMODEL

**4400 JADE STREET
 CAPITOLA, CA 95010**

IF THE ABOVE DIMENSION DOES NOT MEASURE ONE INCH (1") EXACTLY, THIS DRAWING WILL HAVE BEEN ENLARGED OR REDUCED, AFFECTING ALL LABELED SCALES.

BY REVISIONS DATE

CONCEPTUAL DESIGN SET	5/15/23

Date: 5/15/23
 Scale: AS NOTED
 Drawn:
 Job:
 Sheet

A3.2

Plotted On: 5/15/23

PROPOSED ROOF PLAN

ARCHICAD MASTERTEMPLATE (TM) BY BOBROW CONSULTING GROUP | ALL RIGHTS RESERVED | WWW.BOBROW.COM | WWW.ARCHICADTEMPLATE.COM

SEAL

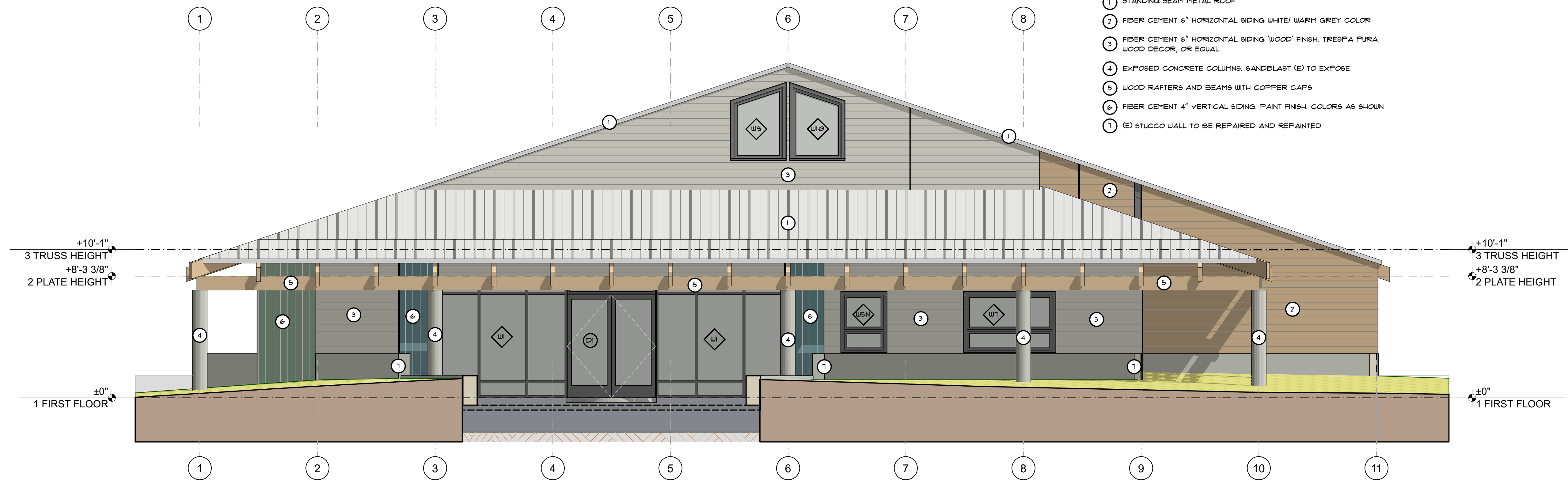
THE ARCHITECT MUST BE NOTIFIED OF ANY DISCREPANCY IN DIMENSIONS, FIELD CONDITIONS OR OTHER INFORMATION THAT IS CONTAINED IN AND/OR DIFFERS FROM THESE DOCUMENTS.

THESE DOCUMENTS ARE THE PROPERTY OF THE ARCHITECT AND MAY NOT BE USED OR REPRODUCED WITHOUT WRITTEN CONSENT. THE ARCHITECT DISCLAIMS ANY RESPONSIBILITY RESULTING FROM UNAUTHORIZED USE.

COPYRIGHT STARTS FROM THE DATE OF THE EARLIEST CONTRACT THROUGH CONSTRUCTION DOCUMENTS.

EXTERIOR ELEVATION LEGEND

- 1 STANDING BEAM METAL ROOF
- 2 FIBER CEMENT 6" HORIZONTAL SIDING WHITE/ WARM GREY COLOR
- 3 FIBER CEMENT 6" HORIZONTAL SIDING 'WOOD' FINSH. TRESPA PURA WOOD DECOR, OR EQUAL
- 4 EXPOSED CONCRETE COLUMNS. SANDBLAST (E) TO EXPOSE
- 5 WOOD RAFTERS AND BEAMS WITH COPPER CAPS
- 6 FIBER CEMENT 4" VERTICAL SIDING. PAINT FINSH. COLORS AS SHOWN
- (E) STUCCO WALL TO BE REPAIRED AND REPAINTED



1 PROPOSED EAST ELEVATION
SCALE: 1/4" = 1'-0"



2 PROPOSED WEST ELEVATION
SCALE: 1/4" = 1'-0"

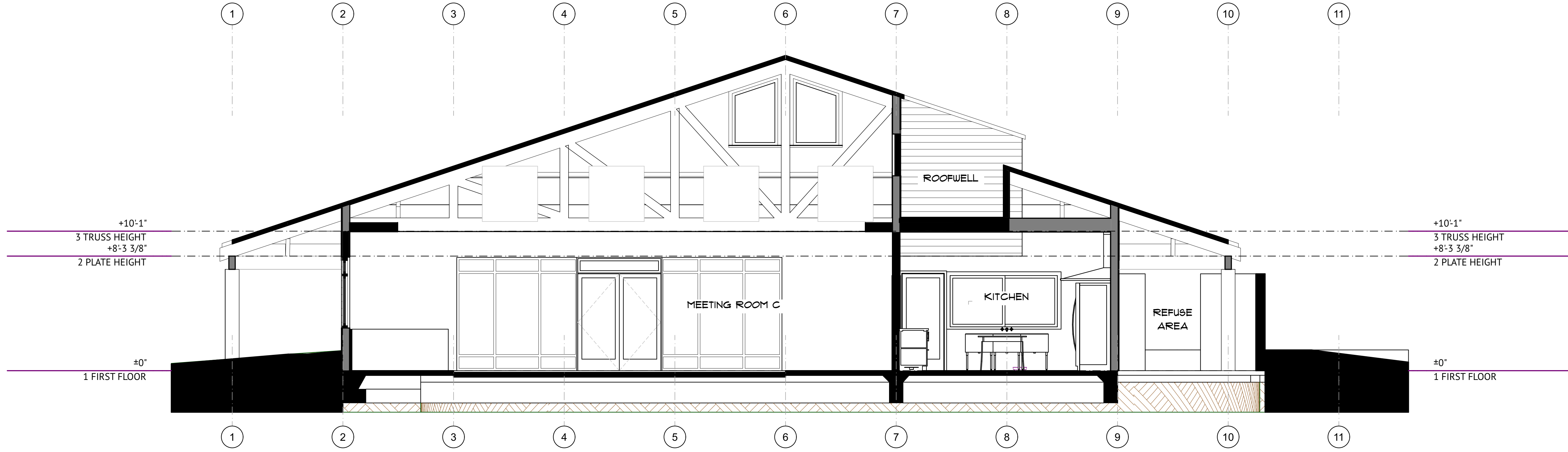
CAPITOLA COMMUNITY CENTER REMODEL

4400 JADE STREET
CAPITOLA, CA 95010

PROPOSED BUILDING ELEVATIONS (CONT) - OPTION 1

← ACTUAL →		
IF THE ABOVE DIMENSION DOES NOT MEASURE ONE INCH (1") EXACTLY, THIS DRAWING WILL HAVE BEEN ENLARGED OR REDUCED, AFFECTING ALL LABELED SCALES.		
BY	REVISIONS	DATE
	CONCEPTUAL DESIGN SET	5/15/23
Date:	5/15/23	
Scale:	AS NOTED	
Drawn:		
Job:		
Sheet		

ARCHICAD MASTERTEMPLATE (TM) BY BOBROW CONSULTING GROUP | ALL RIGHTS RESERVED | WWW.ARCHICADTEMPLATE.COM



C PROPOSED SECTION C
SCALE: 1/4" = 1'-0"

SEAL

THE ARCHITECT MUST BE NOTIFIED OF ANY DISCREPANCY IN DIMENSIONS, FIELD CONDITIONS OR OTHER INFORMATION THAT IS CONTAINED IN AND/OR DIFFERS FROM THESE DOCUMENTS.

THESE DOCUMENTS ARE THE PROPERTY OF THE ARCHITECT AND MAY NOT BE USED OR REPRODUCED WITHOUT WRITTEN CONSENT. THE ARCHITECT DISCLAIMS ANY RESPONSIBILITY RESULTING FROM UNAUTHORIZED USE.

COPYRIGHT STARTS FROM THE DATE OF THE EARLIEST CONTRACT THROUGH CONSTRUCTION DOCUMENTS.

CAPITOLA COMMUNITY CENTER REMODEL

4400 JADE STREET
CAPITOLA, CA 95010

IF THE ABOVE DIMENSION DOES NOT MEASURE ONE INCH (1") EXACTLY, THIS DRAWING WILL HAVE BEEN ENLARGED OR REDUCED, AFFECTING ALL LABELED SCALES.

BY	REVISIONS	DATE
	CONCEPTUAL DESIGN SET	5/15/23

Date: 5/15/23
Scale: AS NOTED
Drawn:
Job:
Sheet

A5.1
Plotted On: 5/15/23

PROPOSED BUILDING SECTIONS

ARCHICAD MASTER TEMPLATE (TM) BY BOBROW CONSULTING GROUP | ALL RIGHTS RESERVED | WWW.BOBROW.COM | WWW.ARCHICADTEMPLATE.COM

ID	D1	D2N	D3	D3N	D3A	D3AN	D4	D5	D5A	D5N	D5AN	D7	D9N	D10N
QUANTITY	4	1	2	1	1	2	2	5	4	8	1	1	3	1
W	6'	3'	6'	6'	3'	3'	3'	3'	3'	3'	3'	2'-6"	6'	10'
HT	T	T	6'-8"	6'-8"	6'-8"	6'-8"	6'-8"	6'-8"	6'-8"	6'-8"	6'-8"	6'-8"	6'-8"	6'-8"
TYPE														
MANJFR														
MATERIAL														
HARDWARE														
GLAZING														
COLOR														
NOTES														
3D BACK VIEW														

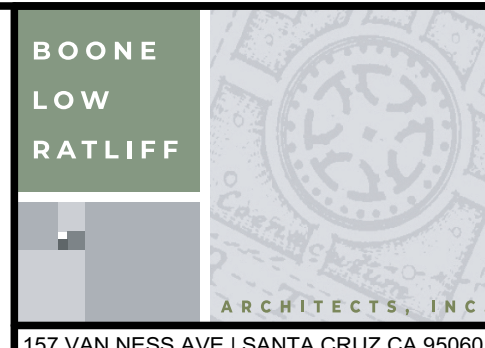
1 DOOR SCHEDULE
SCALE: 1" = 1'-0"

- DOOR NOTES:**
- 1) INTERIOR DOORS TO BE VERTICAL GRAIN DOUG FIR, CLEAR FINISH, WITH SINGLE RECESSED PANEL UNLESS NOTED OTHERWISE ON SCHEDULE. ELEVATION PER SCHEDULE.
 - 2) ALL INTERIOR DOOR TRIM TO BE 1X4 FINGER JOINTED PAINT GRADE FINISH.
 - 3) EXTERIOR DOORS PRIMED TO BE PAINT TO BE CHOSEN BY OWNER. EXTERIOR ELEVATION & AS NOTED ON SCHEDULE. INTERIOR COLOR TBD.
 - 4) GENERAL CONTRACTOR TO CONFIRM HEIGHT OF ALL DOORS BEFORE ORDERING.
 - 5) GENERAL CONTRACTOR TO CONFIRM HEIGHT OF ALL DOORS BEFORE ORDERING.
 - 6) SEE DETAIL SHEET FOR FORTIFIBER FLASHING DETAILS.
 - 7) ALL EXTERIOR DOORS TO BE FULLY WEATHERSTRIPPED.

ID	W1	W2	W3	W4	W5	W5N	W5N	W6	W6N	W7	W8	W9	W10	W11
QUANTITY	4	2	2	12	4	1	1	1	1	1	10	2	2	1
SIZE	WIDTH	8'-9"	6'	3'	2'-11" 1/4"	2'-11"	2'-11" 1/4"	6'	7'	6'	5'-6"	3'-6"	3'-6"	1'-5"
	HEIGHT	8'-2 1/4"	8'-2 1/4"	11'	5'	4'	4'	4'	4'	5'	3'	5'-1 1/2"	5'-1 1/2"	4'-9"
HEADER HEIGHT	8'-2 1/4"	8'-2 1/4"	11'	8'-1"	7'-1"	7'-1"	7'-1"	7'	8'-1"	7'-1"	8'-9 5/8"	12'-11 3/4"	12'-11 3/4"	7'-10"
TYPE	3-PANEL STOREFRONT WITH AWNING @ TOP & BOTTOM	2-PANEL STOREFRONT WITH AWNINGS TOP & BOTTOM	STOREFRONT WITH AWNING @ BOTTOM	FIXED WITH AWNING @ TOP	FIXED WITH AWNING @ BOTTOM	FIXED WITH AWNING @ BOTTOM	FIXED WITH AWNING @ BOTTOM	HORIZONTAL SLIDER	HORIZONTAL SLIDER @ INTERIOR	FIXED WITH AWNING @ BOTTOM	AWNING @ CLERESTORY	FIXED	FIXED	
FRAME MATERIAL														
SHGC/ U-VALUE														
GLAZING NOTES														
DAYLIGHT AREA (SQ.FT.)														
VENT AREA (SQ.FT.)														
NOTES						(N) WINDOWS TO MATCH W5 (E)	(N) WINDOWS TO MATCH W5 (E)		(N) INTERIOR PASS THROUGH WINDOW @ KITCHEN	NOTE THIS WINDOW IS NOT IN ORIGINAL DRAWINGS	TO BE MADE REMOTELY OPERABLE			
VIEW FROM OUTSIDE														

2 WINDOW SCHEDULE
SCALE: 1" = 1'-0"

- WINDOW NOTES:**
- 1) ALL WINDOWS TO BE TBD UNLESS NOTED. EXTERIOR COLOR - TBD, INTERIOR COLOR - TBD, STANDARD SILL NOSING, WINDOW HARDWARE - TO BE CHOSEN BY OWNER.
 - 2) ALL INTERIOR WINDOW TRIM TO BE PAINT GRADE WOOD.
 - 3) FOR FLASHING SEE DETAIL.
 - 4) GENERAL CONTRACTOR TO CONFIRM JAMB SIZE.
 - 5) PROVIDE HEAD FLASHING ON EXTERIOR SIDE OF ALL WINDOWS.
 - 6) REF: STANDARD WINDOW HEAD & TRIM DETAIL FOR XXX WINDOWS.
 - 7) GENERAL CONTRACTOR TO FIELD VERIFY ALL DIMENSIONS PRIOR TO ORDERING ALL (N) WINDOWS & DOORS.



157 VAN NESS AVE | SANTA CRUZ CA 95060

THE ARCHITECT MUST BE NOTIFIED OF ANY DISCREPANCY IN DIMENSIONS, FIELD CONDITIONS OR OTHER INFORMATION THAT IS CONTAINED IN AND/OR DIFFERS FROM THESE DOCUMENTS.

THESE DOCUMENTS ARE THE PROPERTY OF THE ARCHITECT AND MAY NOT BE USED OR REPRODUCED WITHOUT WRITTEN CONSENT. THE ARCHITECT DISCLAIMS ANY RESPONSIBILITY RESULTING FROM UNAUTHORIZED USE.

COPYRIGHT STARTS FROM THE DATE OF THE EARLIEST CONTRACT THROUGH CONSTRUCTION DOCUMENTS.

CAPITOLA COMMUNITY CENTER REMODEL

4400 JADE STREET
CAPITOLA, CA 95010

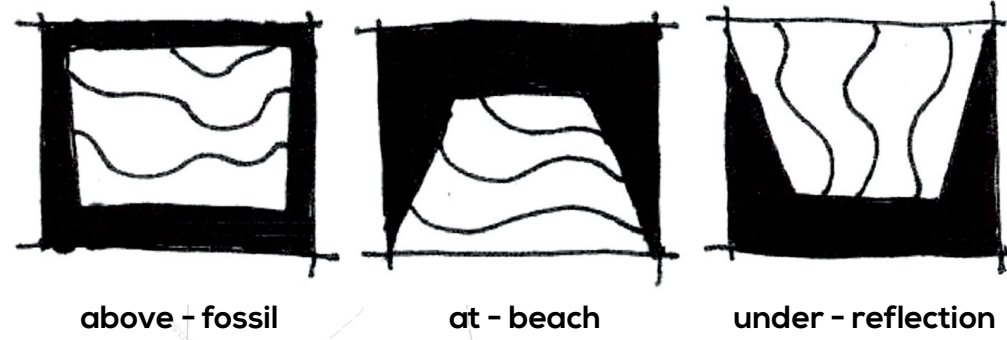
BY	REVISIONS	DATE
	CONCEPTUAL DESIGN SET	5/15/23
Date:	5/15/23	
Scale:	AS NOTED	
Drawn:		
Job:		
Sheet:		

A8.0
Plotted On: 5/15/23

DOOR / WINDOW SCHEDULES

Above (cliffs & sandstone & fossils) - At (beach & transition) - Under (water, reflection & sheltered, cool)

Concept Diagram

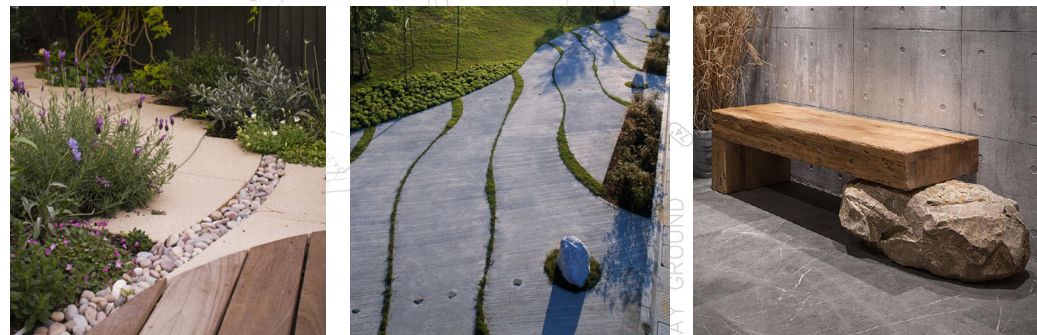


Design Character

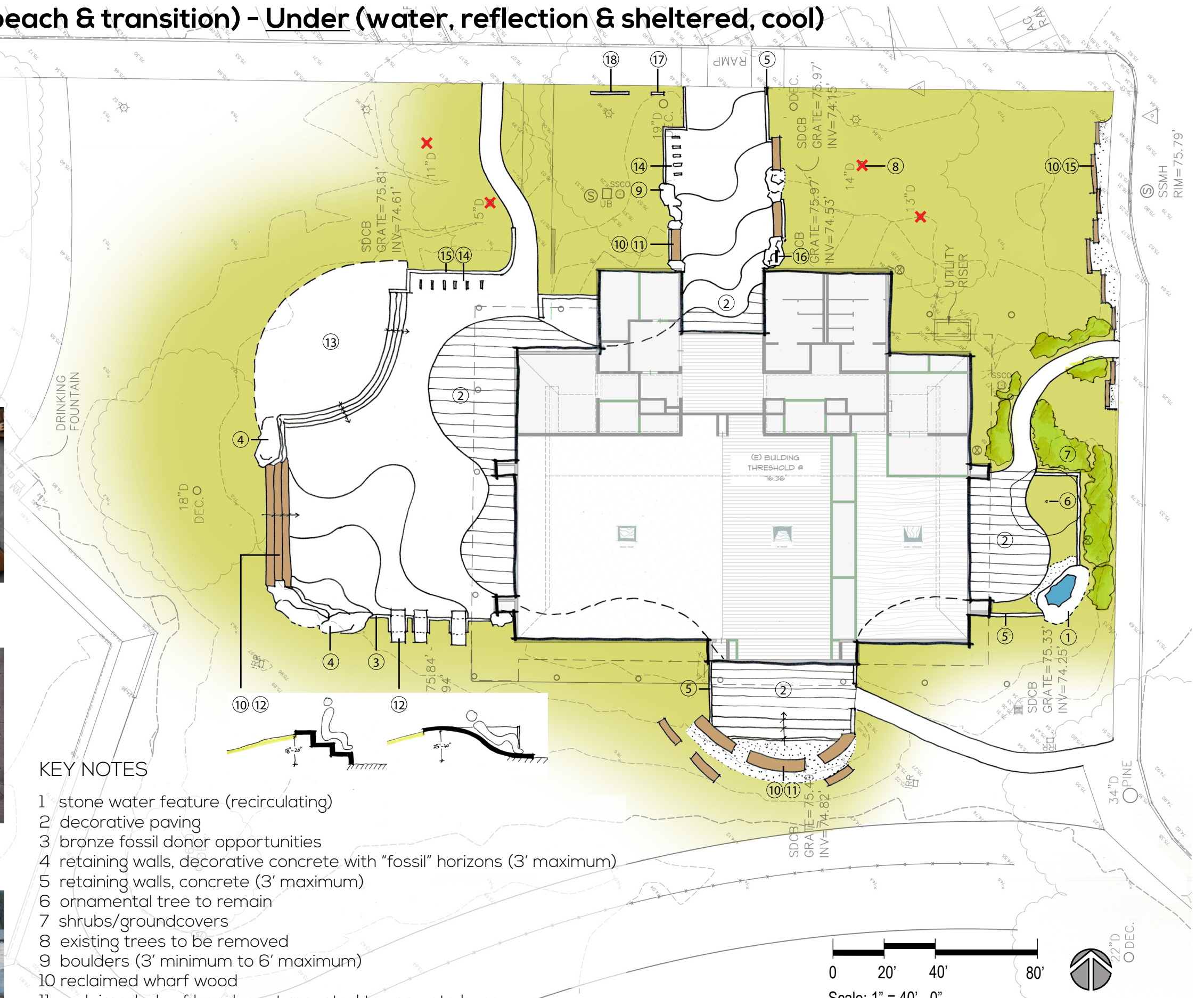
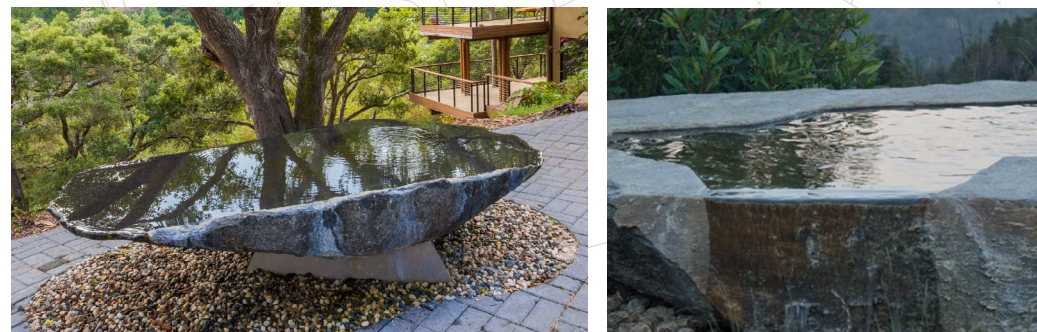
Above -> Cliff and Fossils in concrete walls



At -> Paving Pattern



Under -> Reflection, Shadows and Monochrome



KEY NOTES

- 1 stone water feature (recirculating)
- 2 decorative paving
- 3 bronze fossil donor opportunities
- 4 retaining walls, decorative concrete with "fossil" horizons (3' maximum)
- 5 retaining walls, concrete (3' maximum)
- 6 ornamental tree to remain
- 7 shrubs/groundcovers
- 8 existing trees to be removed
- 9 boulders (3' minimum to 6' maximum)
- 10 reclaimed wharf wood
- 11 reclaimed wharf bench seat mounted to concrete base
- 12 multifunctional retaining wall
- 13 stage
- 14 bike parking
- 15 public art opportunity
- 16 plaque
- 17 message board box
- 18 monument sign (concrete and reclaimed wharf wood)

Schematic Design

CAPITOLA COMMUNITY CENTER RENOVATION
MAY 15, 2023

JONI L. JANECKI
& ASSOCIATES