

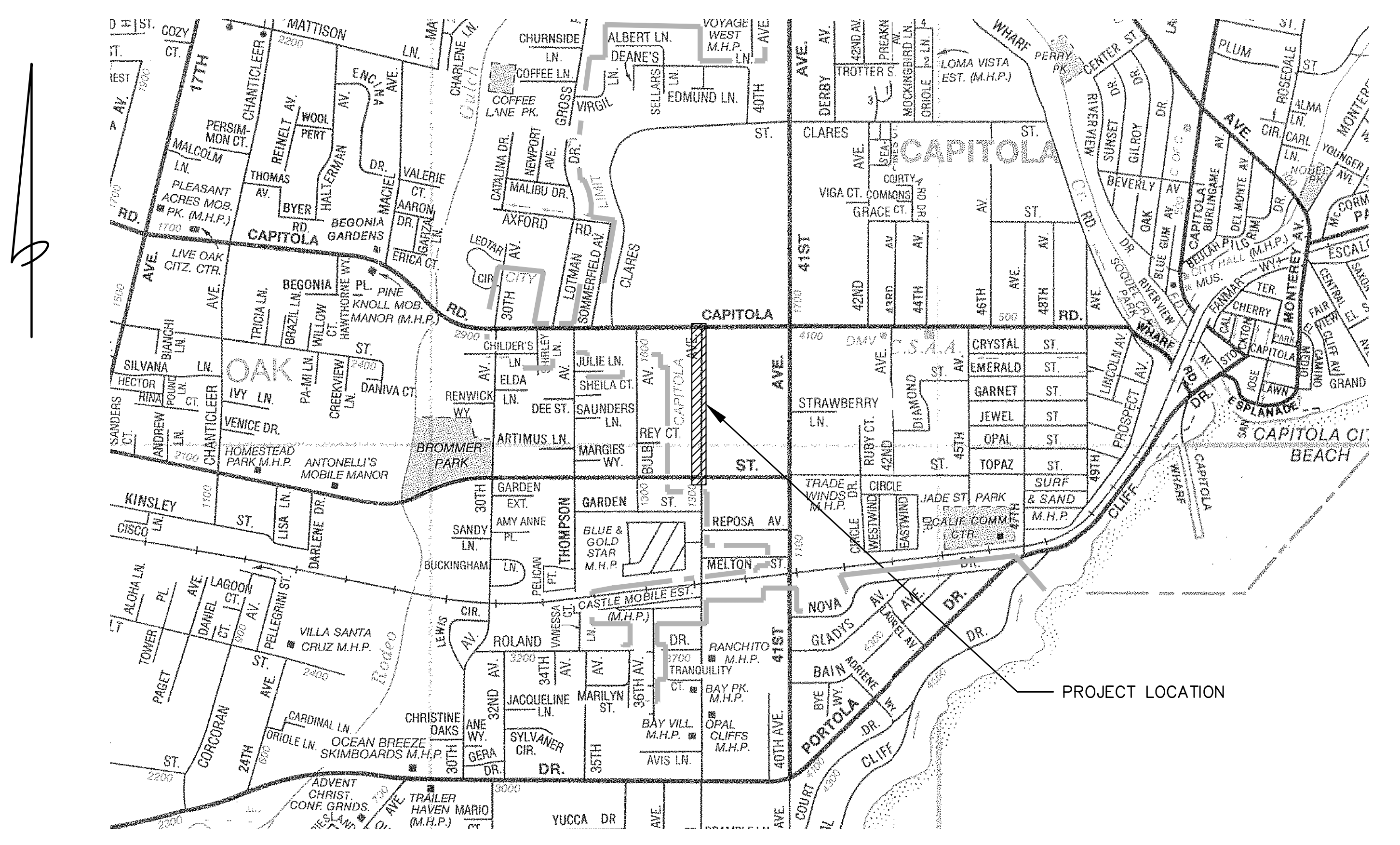
IMPROVEMENT PLANS

38TH AVENUE ROAD RECONSTRUCTION PROJECT

CAPITOLA, CALIFORNIA

GENERAL NOTES

- THE CONTRACTOR SHALL MAKE A DETAILED AND THOROUGH STUDY OF THESE PLANS IN THEIR ENTIRETY PRIOR TO ANY WORK. THE CONTRACTOR IS TO VERIFY ALL EXISTING CONSTRUCTION CONDITIONS AND IS TO COORDINATE THESE DRAWINGS WITH ALL OTHER TRADE DISCIPLINES FOR THE COMPLETED WORK. THE CONTRACTOR IS ALSO TO UNDERSTAND THAT ANY FEATURE OF CONSTRUCTION NOT FULLY SHOWN OR DETAILED SHALL BE OF THE SAME TYPE SHOWN FOR SIMILAR CONDITIONS.
- ALL EARTHWORK SHALL BE PERFORMED IN ACCORDANCE WITH THE CITY OF CAPITOLA MUNICIPAL CODE, AND THE LATEST STATE STANDARD SPECIFICATIONS, STANDARD DETAILS, & THE SPECIAL PROVISIONS NOTED HEREON.
- THE CONTRACTOR SHALL IMMEDIATELY REPORT TO THE ENGINEER ANY DISCREPANCY OCCURRING ON THE DRAWINGS OR FOUND IN HIS COORDINATION WORK. NO CHANGES IN APPROVED PLANS SHALL BE MADE WITHOUT PRIOR WRITTEN APPROVAL OF THE PROJECT ENGINEER.
- ANY REQUEST FOR ALTERATIONS OR SUBSTITUTIONS MUST BE PRESENTED DIRECTLY TO THE ENGINEER, ACCOMPANIED BY A DETAILED SKETCH, FOR REVIEW, BEFORE ANY APPROVAL WILL BE GIVEN AND BEFORE PROCEEDING WITH THE WORK. ABSOLUTELY NO ALTERATIONS OF THESE DOCUMENTS OF ANY KIND WILL BE APPROVED ON ANY SHOP DRAWINGS.
- ALL CONSTRUCTION SHALL CONFORM TO THE APPLICABLE PROVISIONS OF THE STATE OF CALIFORNIA STANDARD SPECIFICATIONS (CALTRANS), LATEST EDITION, THE CITY OF CAPITOLA DESIGN CRITERIA, THE CALIFORNIA MANUAL ON UNIFORM TRAFFIC CONTROL DEVICES (CAMUTCD), LATEST EDITION, AND ALL APPLICABLE CODES AND ORDINANCES.
- ALL UNDERGROUND UTILITIES SHALL BE INSTALLED PRIOR TO THE PLACEMENT OF ANY NEW CURB, GUTTER, SIDEWALK & PAVEMENT.
- THE CONTRACTOR SHALL SECURE ALL REQUIRED CONSTRUCTION PERMITS PRIOR TO THE START OF WORK.
- NO CHANGES IN THE APPROVED IMPROVEMENT PLANS SHALL BE MADE WITHOUT PRIOR WRITTEN APPROVAL OF THE ENGINEER.
- CONTRACTOR AGREES THAT IN ACCORDANCE WITH GENERALLY ACCEPTED CONSTRUCTION PRACTICES, CONTRACTOR WILL BE REQUIRED TO ASSUME SOLE AND COMPLETE RESPONSIBILITY FOR JOB SITE CONDITIONS DURING THE COURSE OF CONSTRUCTION OF THE PROJECT, INCLUDING SAFETY OF ALL PERSONS AND PROPERTY; THAT THIS REQUIREMENT SHALL BE MADE TO APPLY CONTINUOUSLY AND NOT BE LIMITED TO NORMAL WORKING HOURS, AND CONTRACTOR FURTHER AGREES TO DEFEND, INDEMNIFY AND HOLD PROJECT ENGINEER HARMLESS FROM ANY AND ALL LIABILITY, REAL OR ALLEGED, IN CONNECTION WITH THE PERFORMANCE OF WORK ON THIS PROJECT, EXCEPTING LIABILITY ARISING FROM THE SOLE NEGLIGENCE OF THE PROJECT ENGINEER.
- THE CONTRACTOR SHALL NOTIFY THE CITY INSPECTOR 48 HOURS PRIOR TO COMMENCING WORK.
- ALL KNOWN EXISTING UTILITY LINES ARE SHOWN FOR INFORMATION ONLY. CONTRACTOR SHALL EXERCISE ALL NECESSARY CAUTION TO AVOID DAMAGE TO ANY EXISTING UTILITIES OR FACILITIES TO REMAIN IN PLACE, WHETHER OR NOT SUCH LINES OR FACILITIES ARE SHOWN ON THESE PLANS, AND SHALL BEAR FULL RESPONSIBILITY FOR ANY DAMAGE THEREON. CONTRACTOR IS ADVISED TO CONTACT A UNDERGROUND SERVICE LOCATOR FOR MARKING UNDERGROUND LINES PRIOR TO BEGINNING WORK. THE PROJECT INSPECTOR SHALL BE PRESENT WHILE THE UNDERGROUND SERVICE LOCATOR IS ON SITE.



VICINITY MAP
NOT TO SCALE

LEGEND

- AREA DRAIN OR CATCH BASIN
- BENCHMARK
- FENCE LINE
- FIRE HYDRANT
- FOUND MONUMENT AS NOTED
- GAS LINE
- PROPERTY LINE
- SANITARY SEWER LINE
- SET RANDOM NAIL
- SIGN
- SPOT ELEVATION
- STORM DRAIN LINE
- TREE
- WATER LINE

ABBREVIATIONS

- AC ASPHALT CONCRETE
- APN ASSESSOR'S PARCEL NUMBER
- C CURB
- CAMUTCD CALIFORNIA MANUAL ON UNIFORM TRAFFIC CONTROL DEVICES
- CB CATCH BASIN
- CONC CONCRETE
- DWY DRIVEWAY
- (E), EX EXISTING
- ELEC ELECTRIC
- FC FACE OF CURB
- FD FLOWLINE
- FL FIRE HYDRANT
- GH GUTTER
- GR GRATE
- HB HOSEBIB
- INV INVERT
- IP IRON PIPE
- LND LANDING
- MAG MAGNETIC
- (N) NEW
- ± PLUS OR MINUS
- (P) PROPOSED
- PA PLANTING AREA
- PG&E PACIFIC GAS & ELECTRIC
- PVMT PAVEMENT
- RCE REGISTERED CIVIL ENGINEER
- RW REDWOOD
- SDCB STORM DRAIN CATCH BASIN
- SQ SQUARE
- STD STANDARD
- S/W SIDEWALK
- TC TOP OF CURB
- TELE TELEPHONE
- WM WATER METER

CAPITOLA STORMWATER BMPS

- CONDUCT ASPHALT AND CONCRETE REMOVAL ACTIVITIES DURING DRY WEATHER WHENEVER POSSIBLE.
- PROTECT NEARBY STORM DRAIN INLETS AND ADJACENT WATER BODIES PRIOR TO BREAKING UP ASPHALT OR CONCRETE. IF RAIN IS FORECAST, THEN PLACE SANDBAGS AROUND INLETS OR WORK AREAS.
- DRY OUT WHENEVER POSSIBLE. SWEEP BY HAND OR USING STREET SWEEPING EQUIPMENT AS APPROPRIATE. DURING SAW CUTTING AND GRADING OPERATIONS, USE AS LITTLE WATER AS POSSIBLE. PROTECT NEARBY CATCH BASINS OR GUTTERS, AND USE MATERIALS TO CONTAIN THE SLURRY. IF SLURRY ENTERS THE STORM DRAIN SYSTEM, REMOVE MATERIAL IMMEDIATELY. REMOVE SAW-CUT SLURRY FROM THE WORK AREA WITH A SHOVEL, VACUUM OR BY SWEEPING AS SOON AS IT IS DRY.
- WHEN THE JOB IS COMPLETED, BE SURE THAT ALL PARTICLES AND DEBRIS ARE COLLECTED AND REMOVED FROM THE SITE. SWEEP THE AREA BY HAND OR WITH THE CITY'S STREET SWEEPING EQUIPMENT. BE SURE THAT NOTHING HAS DRIFTED TOWARDS THE STREET, GUTTER, OR CATCH BASIN.
- SCHEDULE PATCHING, RESURFACING AND SURFACE SEALING DURING DRY WEATHER.
- PREHEAT, TRANSFER, OR LOAD HOT BITUMINOUS MATERIAL AWAY FROM DRAINAGE SYSTEMS OR WATERCOURSES.
- COVER AND SEAL NEARBY STORM DRAIN INLETS AND MANHOLES BEFORE APPLYING SEAL COAT, SLURRY SEAL, ETC. LEAVE COVERS IN PLACE UNTIL JOB IS COMPLETE AND UNTIL ALL WATER FROM EMULSIFIED OIL SEALANT HAS DRAINED OR EVAPORATED. COLLECT WASTE MATERIALS FOR PROPER DISPOSAL.
- USE ONLY AS MUCH WATER AS NECESSARY FOR DUST CONTROL TO AVOID RUNOFF. IF IT RAINS UNEXPECTEDLY, TAKE APPROPRIATE ACTION TO PREVENT POLLUTION OF STORM WATER RUNOFF. DIVERT RUNOFF AROUND WORK AREAS AND COVER MATERIALS. STOCKPILE MATERIALS AWAY FROM STREET, GUTTER AREAS, STORM DRAIN INLETS OR WATERCOURSES. DURING WET WEATHER, COVER STOCKPILES WITH TARPS OR USE BERMS TO PREVENT RUNOFF.
- REMOVE STOCKPILES, SWEEP UP EXCESS MATERIAL, AND DISPOSE OF PROPERLY BY THE END OF EACH WEEK OR, IF DURING THE RAINY SEASON, THE END OF EACH DAY. SWEEP UP AS MUCH EXCESS MATERIAL AS POSSIBLE AND DISPOSE OF PROPERLY. ONLY WASH DOWN STREETS IF RUNOFF CAN BE CONTROLLED OR CONTAINED. STOCKPILES MUST BE REMOVED BY THE END OF EACH DAY IF THEY ARE LOCATED IN THE PUBLIC RIGHT-OF-WAY.
- RECYCLE AS MUCH OLD PAVEMENT MATERIAL AS POSSIBLE. PROPERLY DISPOSE OF NON-RECYCLABLE MATERIALS.
- PARK PAVING MACHINES OVER DRIP PANS OR ABSORBENT MATERIALS.
- NEVER WASH SWEEPINGS FROM EXPOSED AGGREGATE CONCRETE INTO A STREET OR A STORM DRAIN INLET. COLLECT AND RETURN TO AGGREGATE BASE STOCKPILE OR DISPOSE OF IN THE TRASH.

APPROVED FOR CONSTRUCTION BY THE CITY OF CAPITOLA

Steven Jesberg
STEVEN JESBERG, PUBLIC WORKS DIRECTOR

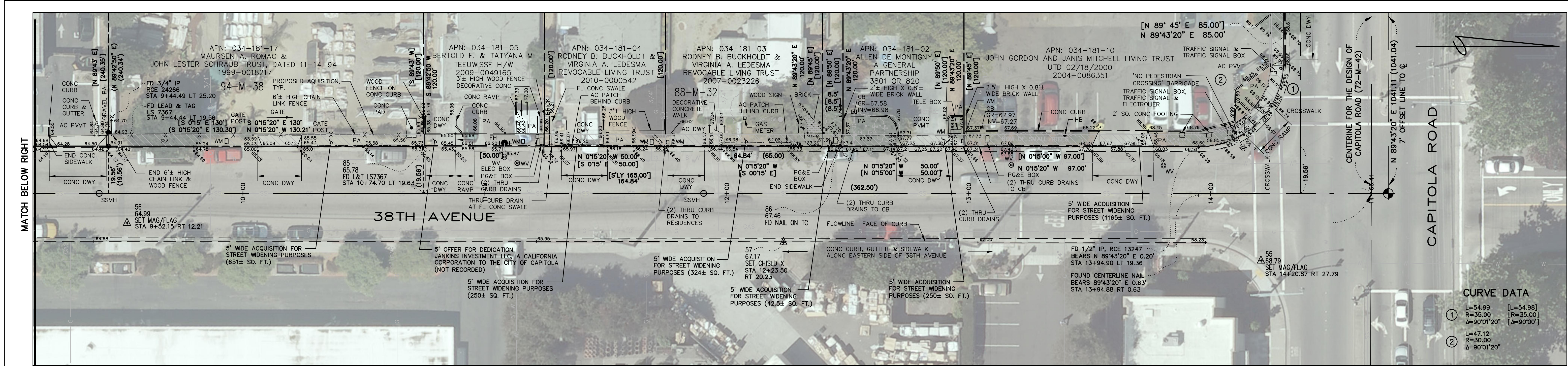
SHEET INDEX

- C1.0 COVER SHEET
- TP-1 TOPOGRAPHIC MAP
- C2.0 ROAD RECONSTRUCTION PLAN
- C2.1 SIDEWALK IMPROVEMENT PLAN
- C2.2 STRIPING PLAN
- C2.3 TRAFFIC CONTROL PLAN
- C3.0 STANDARD DETAILS



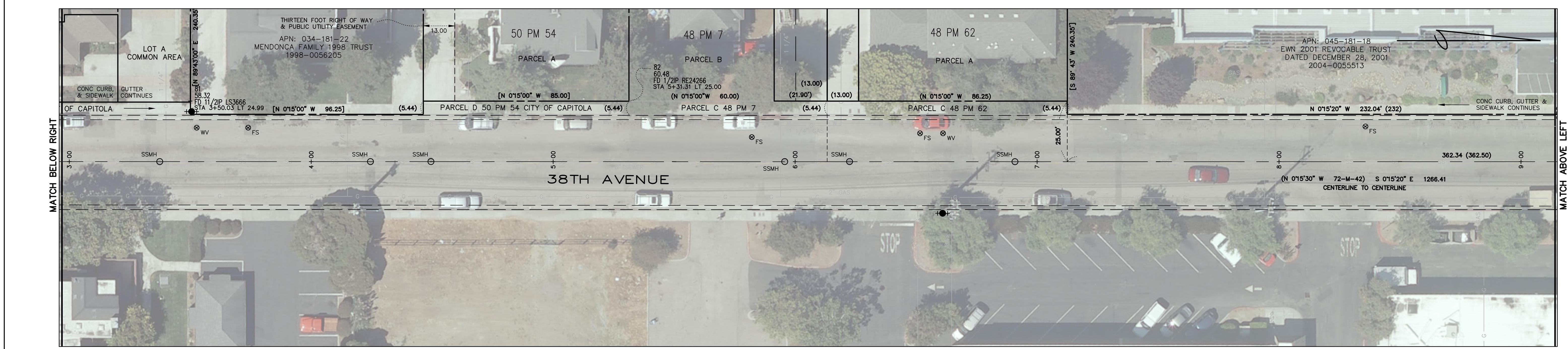
REVISED			
	BOWMAN & WILLIAMS CONSULTING CIVIL ENGINEERS 1011 CEDAR STREET SANTA CRUZ, CA 95060 (831) 426-3560	COVER SHEET	
	REGISTERED CIVIL ENGINEER NO. 53588	38TH AVENUE ROAD RECONSTRUCTION PROJECT CAPITOLA, CALIFORNIA	
SCALE NTS	DRAWN DLN	JOB NO. 26270	SHEET
DATE JANUARY 5, 2016	CHECKED JFR	INDEX RODEO 2D	C1.0
DESIGN	DWG NAME 26270_C1.0	FILE NO. 26270	

DISCLAIMER
THE DATA SET FORTH ON THIS SHEET IS THE PROPERTY OF BOWMAN & WILLIAMS CONSULTING CIVIL ENGINEERS. IT IS AN INSTRUMENT OF SERVICE AND MAY NOT BE REPRODUCED, ALTERED, OR USED WITHOUT THE CONSENT OF THE ENGINEER. THE PROPER ELECTRONIC TRANSFER OF DATA SHALL BE THE USER'S RESPONSIBILITY WITHOUT LIABILITY TO THE ENGINEER. UNAUTHORIZED USE IS PROHIBITED.



CURVE DATA

①	L=54.99	[L=54.98]
	R=35.00	[R=35.00]
	Δ=90°01'20"	[Δ=90°00']
②	L=47.12	
	R=30.00	
	Δ=90°01'20"	

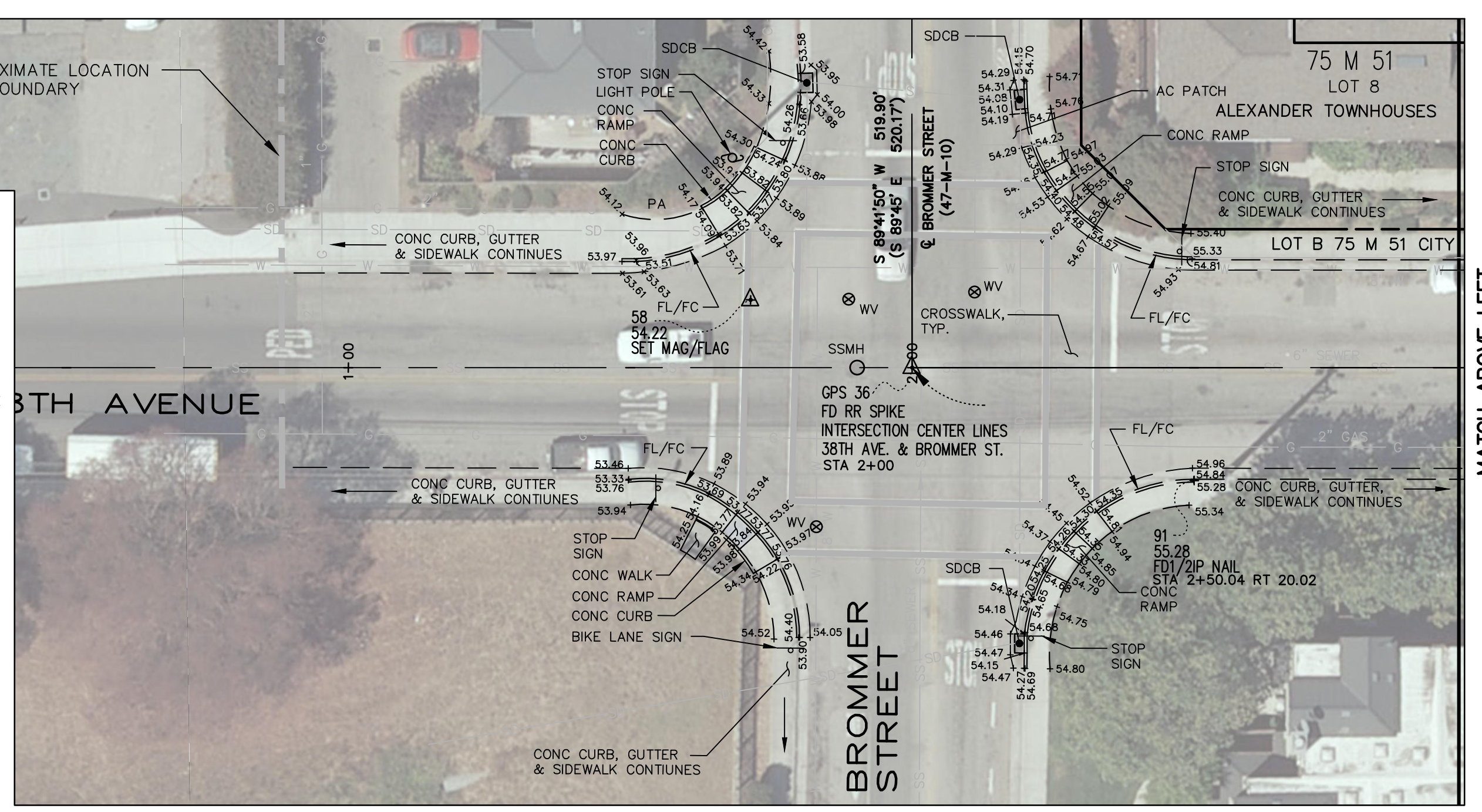


BASIS OF ELEVATIONS
 ELEVATIONS SHOWN HEREON ARE BASED ON THE COUNTY OF SANTA CRUZ BENCHMARK #13. A BRASS CAP IN A 12-INCH COUNTY MONUMENT BOX MARKED "OH1" LOCATED 45' WEST OF THE CENTERLINE OF 41ST AVENUE & 12- FEET SOUTH OF THE CENTERLINE OF THE RAILROAD TRACKS, ALSO 12.5- FEET EAST OF THE CENTERLINE OF THE SIGNAL CROSSING CONTROL BOX.
 ELEVATION BM#13=62.003 FEET NGVD29 (ADJUSTED)

BASIS OF BEARINGS
 BEARINGS SHOWN HEREON ARE BASED ON A SURVEY COMPLETED BY DUNBAR & CRAIG LAND SURVEYS, JOB# 94072 AND RECORDED IN VOLUME 88 OF MAPS AT PAGE 32 "MONUMENTS FOUND ON THE 7 FOOT OFFSET LINE TO THE CENTER LINE OF CAPITOLA ROAD AND AS SHOWN ON VOLUME 72 OF MAPS AT PAGE 42" SANTA CRUZ COUNTY RECORDS.
 =NORTH 89° 43' 20" EAST

MONUMENT NOTE
 CONTRACTOR SHALL BE RESPONSIBLE FOR ANY MONUMENTATION AND/OR BENCHMARKS WHICH WILL BE DISTURBED OR DESTROYED BY CONSTRUCTION. SUCH POINTS SHALL BE REFERENCED AND REPLACED WITH APPROPRIATE MONUMENTATION BY A LICENSED LAND SURVEYOR OR A REGISTERED CIVIL ENGINEER AUTHORIZED TO PRACTICE LAND SURVEYING. A CORNER RECORD OR RECORD OF SURVEY, AS APPROPRIATE, SHALL BE FILED BY THE LICENSED LAND SURVEYOR OR THE REGISTERED CIVIL ENGINEER AS REQUIRED BY THE LAND SURVEYOR'S ACT (BUSINESS AND PROFESSIONS CODE 8771)

UTILITY NOTE
 UTILITY LOCATIONS ARE APPROXIMATE. UTILITIES SHOWN ON THIS MAP WERE DETERMINED FROM UTILITY COMPANY RECORDS AND FROM SURFACE EVIDENCE OF UNDERGROUND LOCATIONS, DURING A SURVEY BY BOWMAN AND WILLIAMS MARCH 2010. IT IS THE CONTRACTOR'S RESPONSIBILITY TO VERIFY THE LOCATION AND DEPTH OF THESE UTILITIES PRIOR TO CONSTRUCTION, AND TO NOTIFY THE PROJECT ENGINEER IN CASE OF CONFLICT.
 CALL U.S.A. (UNDERGROUND SERVICE ALERT) (800) 642-2444 BEFORE ANY EXCAVATION.
 SANITARY SEWER AND WATER LATERALS NOT SHOWN.



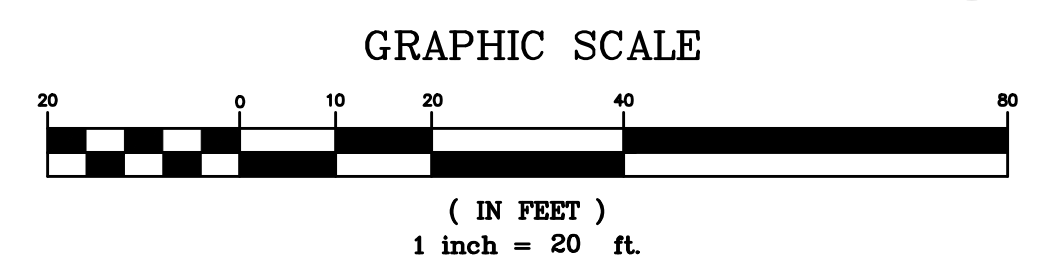
LEGEND

[Symbol]	AREA DRAIN OR CATCH BASIN
[Symbol]	BENCHMARK
[Symbol]	FENCE LINE
[Symbol]	FIRE HYDRANT
[Symbol]	FOUND MONUMENT AS NOTED
[Symbol]	GAS LINE
[Symbol]	PROPERTY LINE
[Symbol]	PROPOSED 5' WIDE ACQUISITION
[Symbol]	PROPOSED ACQUISITION
[Symbol]	SANITARY SEWER LINE
[Symbol]	SET RANDOM NAIL
[Symbol]	SIGN
[Symbol]	SPOT ELEVATION
[Symbol]	STORM DRAIN LINE
[Symbol]	TREE
[Symbol]	VALVE AS NOTED
[Symbol]	WATER LINE

ABBREVIATIONS

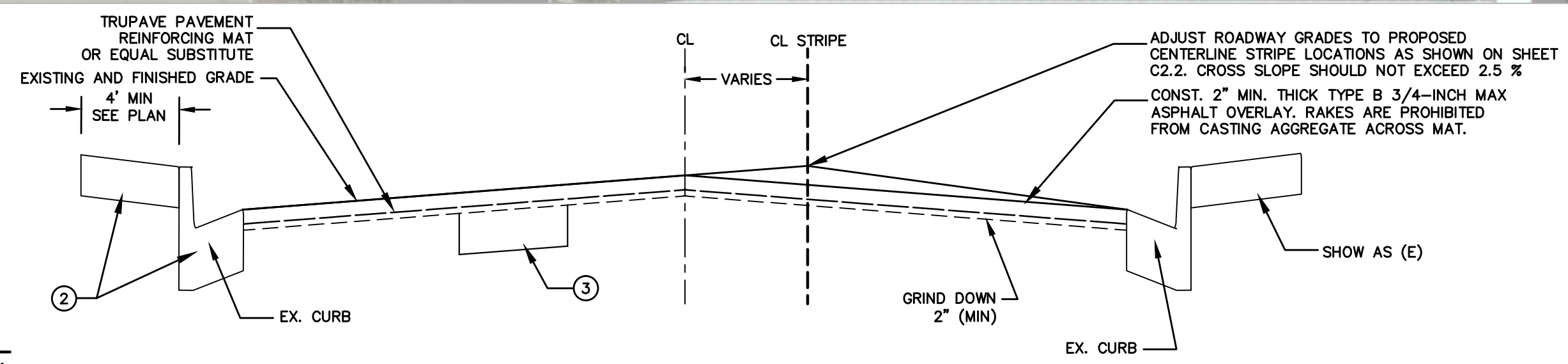
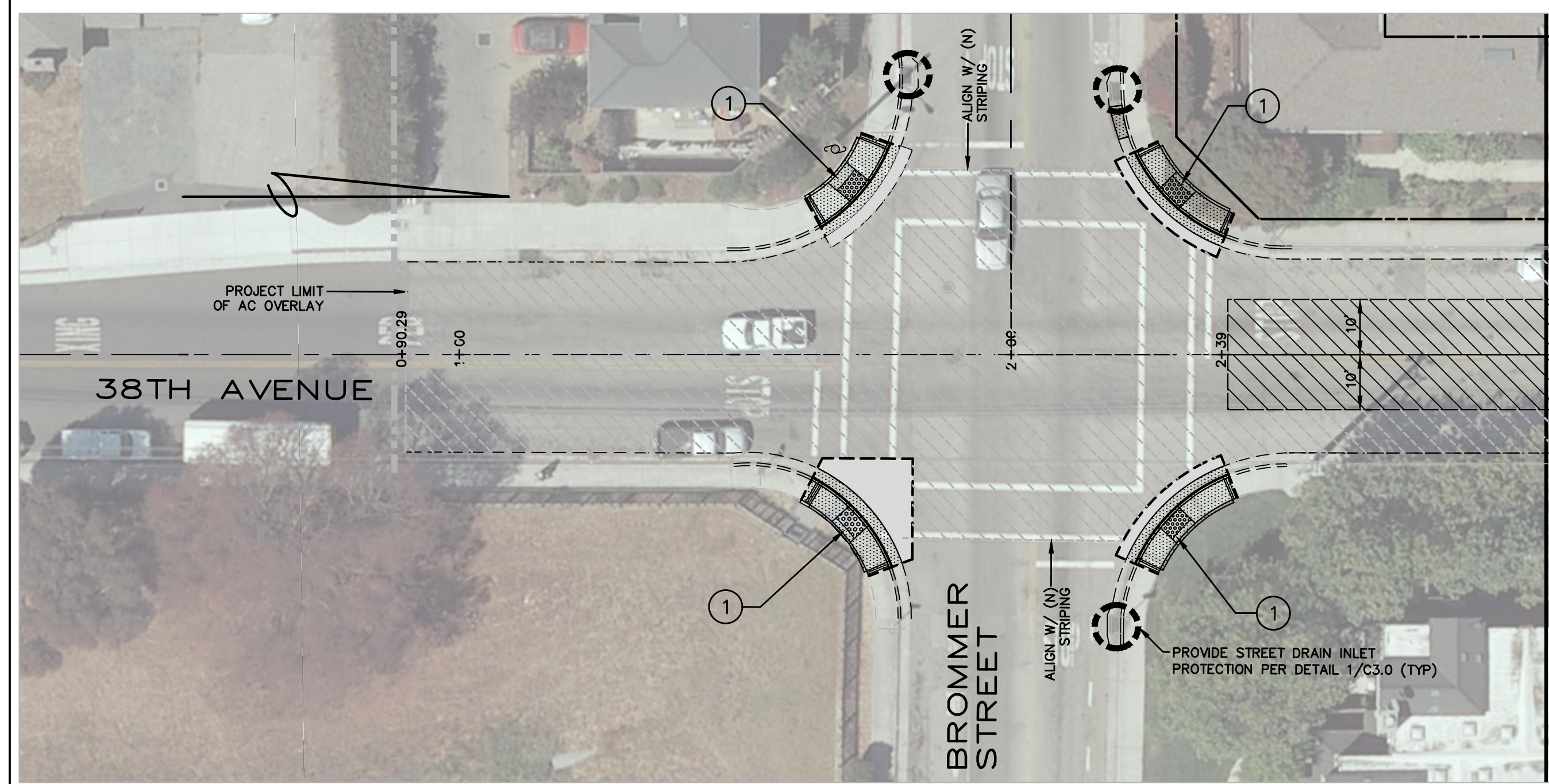
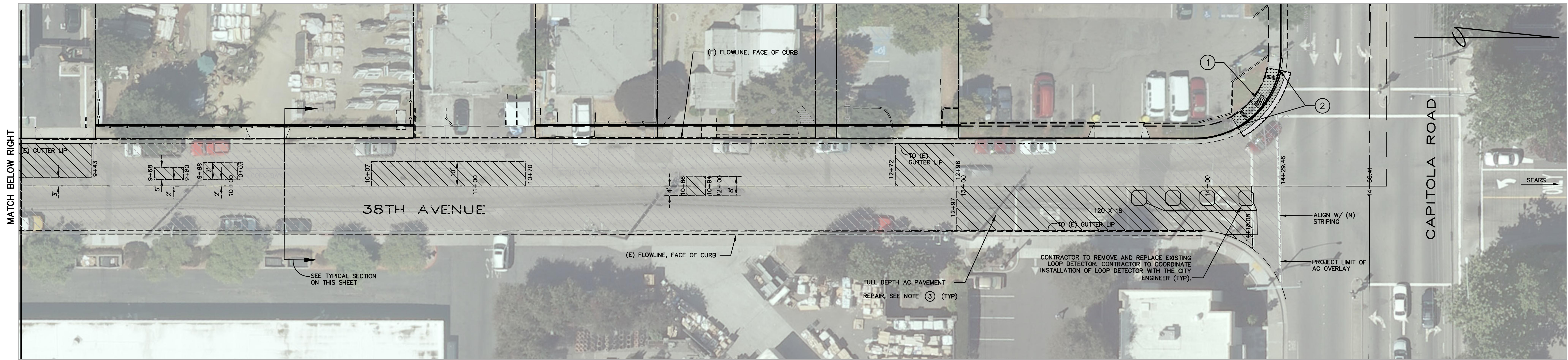
AC	ASPHALT CONCRETE	MAG	MAGNETIC PLUS OR MINUS
APN	ASSESSORS PARCEL NUMBER	PA	PLANTING AREA
CB	CATCH BASIN	PG&E	PACIFIC GAS & ELECTRIC
CONC	CONCRETE	PVMT	PAVEMENT
DWY	DRIVEWAY	RCE	REGISTERED CIVIL ENGINEER
ELEC	ELECTRIC	RW	REDWOOD
FC	FACE OF CURB	SDCB	STORM DRAIN CATCH BASIN
FD	FOUND	SSMH	SANITARY SEWER MANHOLE
FL	FLOWLINE	TC	TOP OF CURB
FH	FIRE HYDRANT	TELE	TELEPHONE
FS	FIRE SERVICE VALVE	WM	WATER METER
GR	GRATE	WV	WATER VALVE
HB	HOSEBIB		
INV	INVERT		
IP	IRON PIPE		

DISCLAIMER
 THE DATA SET FORTH ON THIS SHEET IS THE PROPERTY OF BOWMAN & WILLIAMS CONSULTING CIVIL ENGINEERS. IT IS AN INSTRUMENT OF SERVICE AND MAY NOT BE REPRODUCED, ALTERED, OR USED WITHOUT THE CONSENT OF THE ENGINEER. THE PROPER ELECTRONIC TRANSFER OF DATA SHALL BE THE USER'S RESPONSIBILITY WITHOUT LIABILITY TO THE ENGINEER. UNAUTHORIZED USE IS PROHIBITED.



BOWMAN & WILLIAMS CONSULTING CIVIL ENGINEERS 1011 CEDAR STREET SANTA CRUZ, CA 95060 (831) 426-3560		TOPOGRAPHIC MAP 38TH AVENUE ROAD RECONSTRUCTION PROJECT CAPITOLA, CALIFORNIA	
REGISTERED CIVIL ENGINEER No. 53588	SCALE 1" = 20'	DRAWN DLN/TPC	JOB NO. 26270
DATE MAY 26, 2010	CHECKED JFR	INDEX RODEO 2D	SHEET TP-1
DESIGN	DWG NAME 26270_TPO	FILE NO. 26270	

A:\38th\26270\26270-1-18th_Ave_Capitola\img\26270_TPO.dwg, 1/25/2010 9:53:40 AM, DWG To PDF.pc3



TYPICAL SECTION
SCALE: 1"=5'-0" H / 1"=1'-0" V

NOTES

- ① RECONSTRUCT CURB RAMPS TO NEW STANDARD (CASE C), SEE CALTRANS STANDARD PLAN RSP AB8A ON SHEET C3.0
- ② CONSTRUCT NEW SIDEWALK, CURB AND GUTTER WHERE OCCURS, SEE SHEET C2.1. SEE CITY OF CAPITOLA CURB, GUTTER, AND SIDEWALK DETAIL AND SPECIFICATIONS S-1 & SP-1.
- ③ FULL DEPTH AC PAVEMENT REPAIR
 - AFTER INITIAL 2" DEEP COLD MILL, COLD MILL AN ADDITIONAL 4" DEEP.
 - PROVIDE LEVELING COURSE WHERE NEEDED TO KEEP GRADE.
 - PLACE A SINGLE 4" THICK AC LIFT.
 - INSTALL TRUPAVE REINFORCING MAT OVER ENTIRE MILLED PAVEMENT SURFACE
 - OVERLAY 2" THICK AC

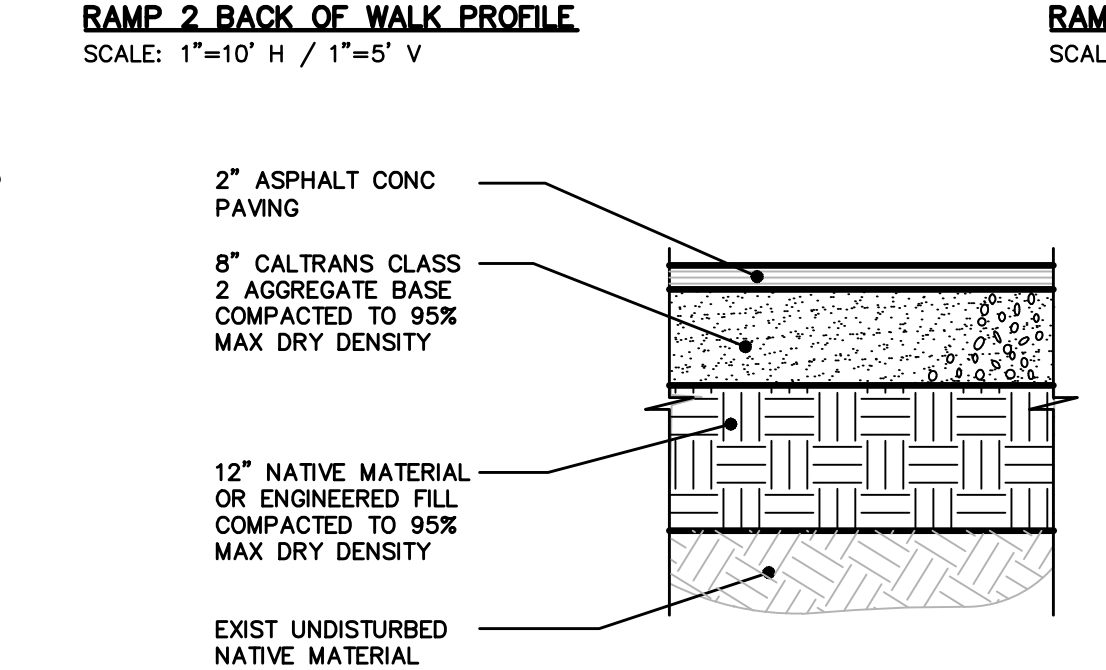
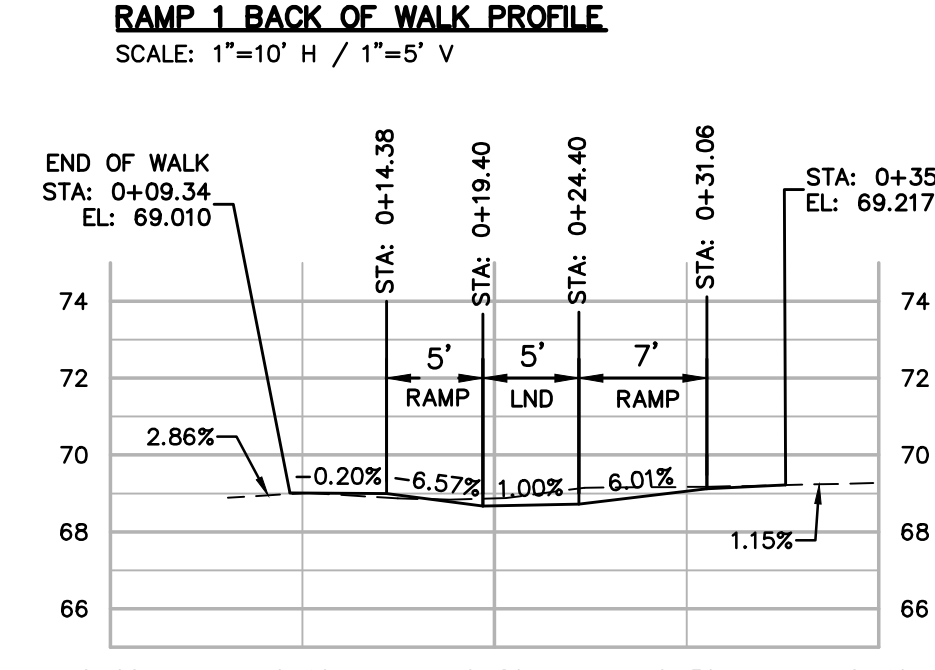
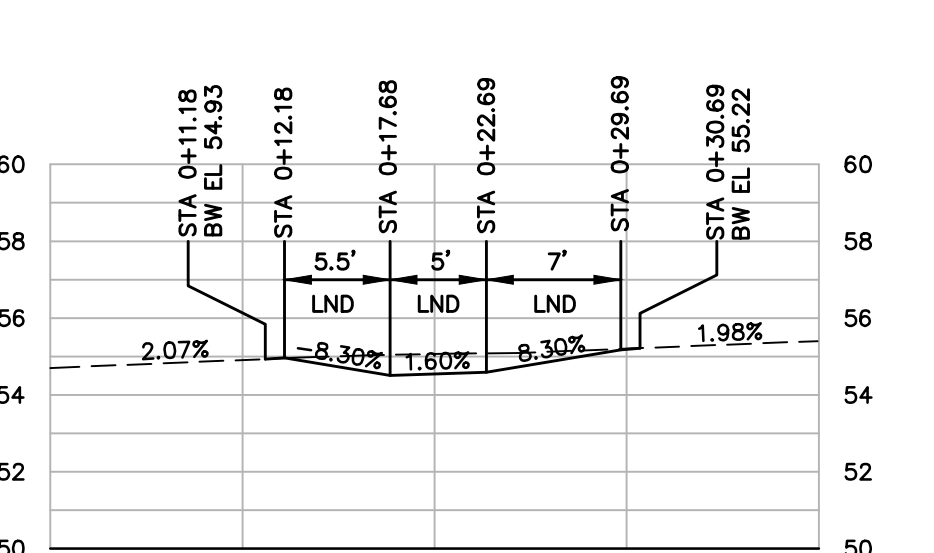
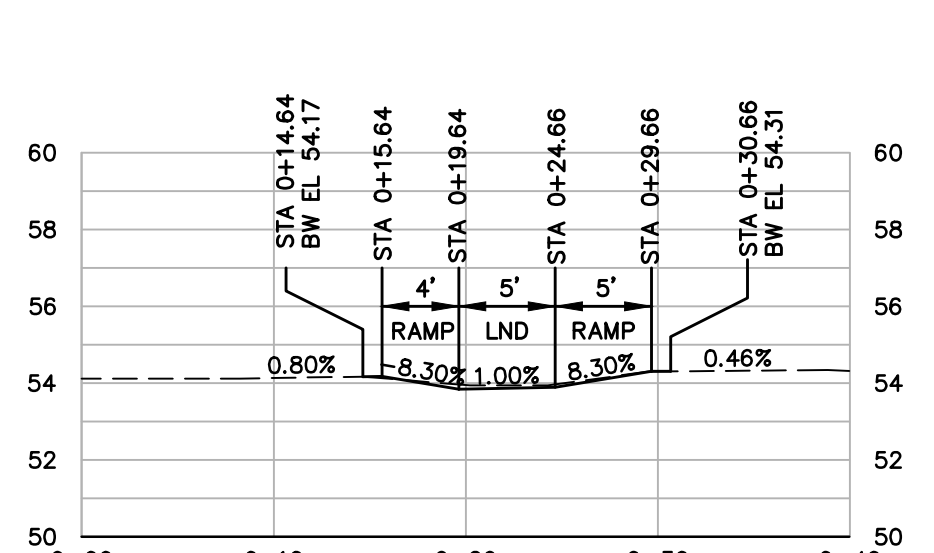
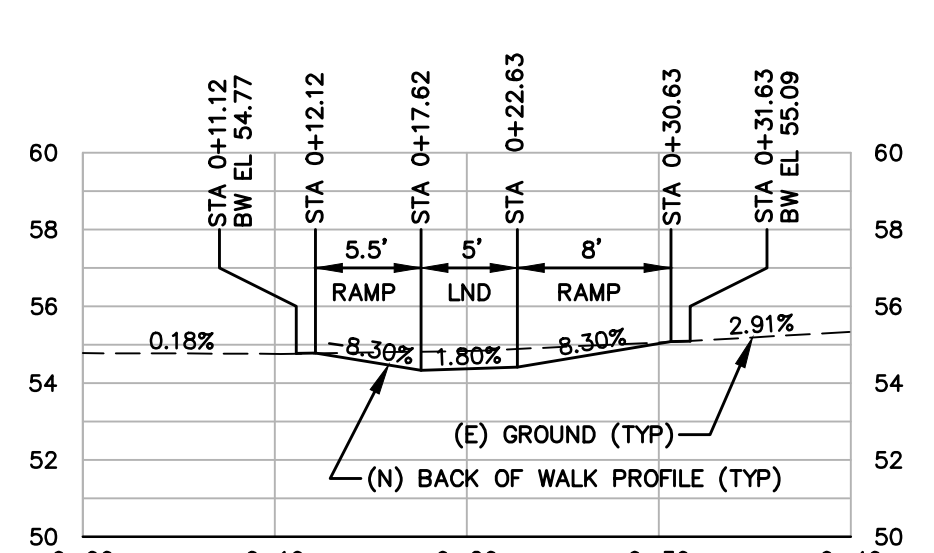
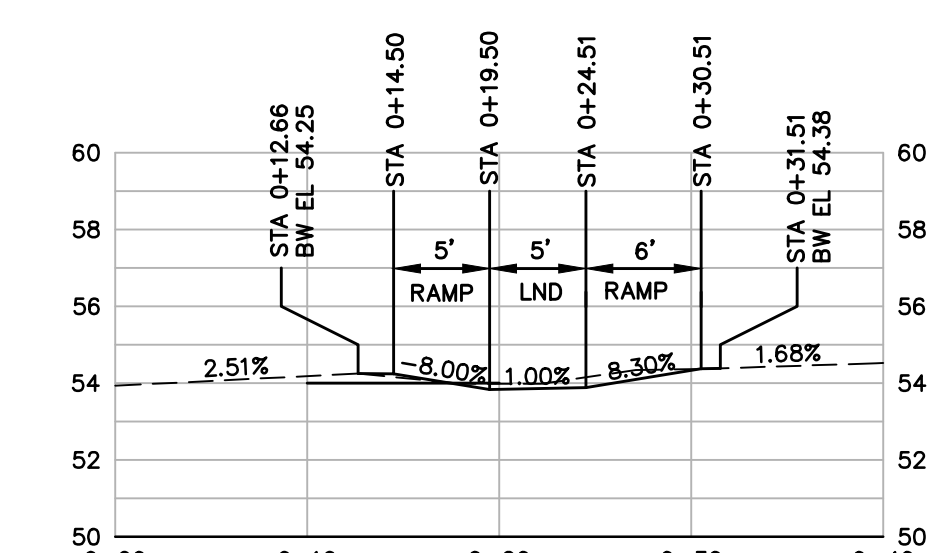
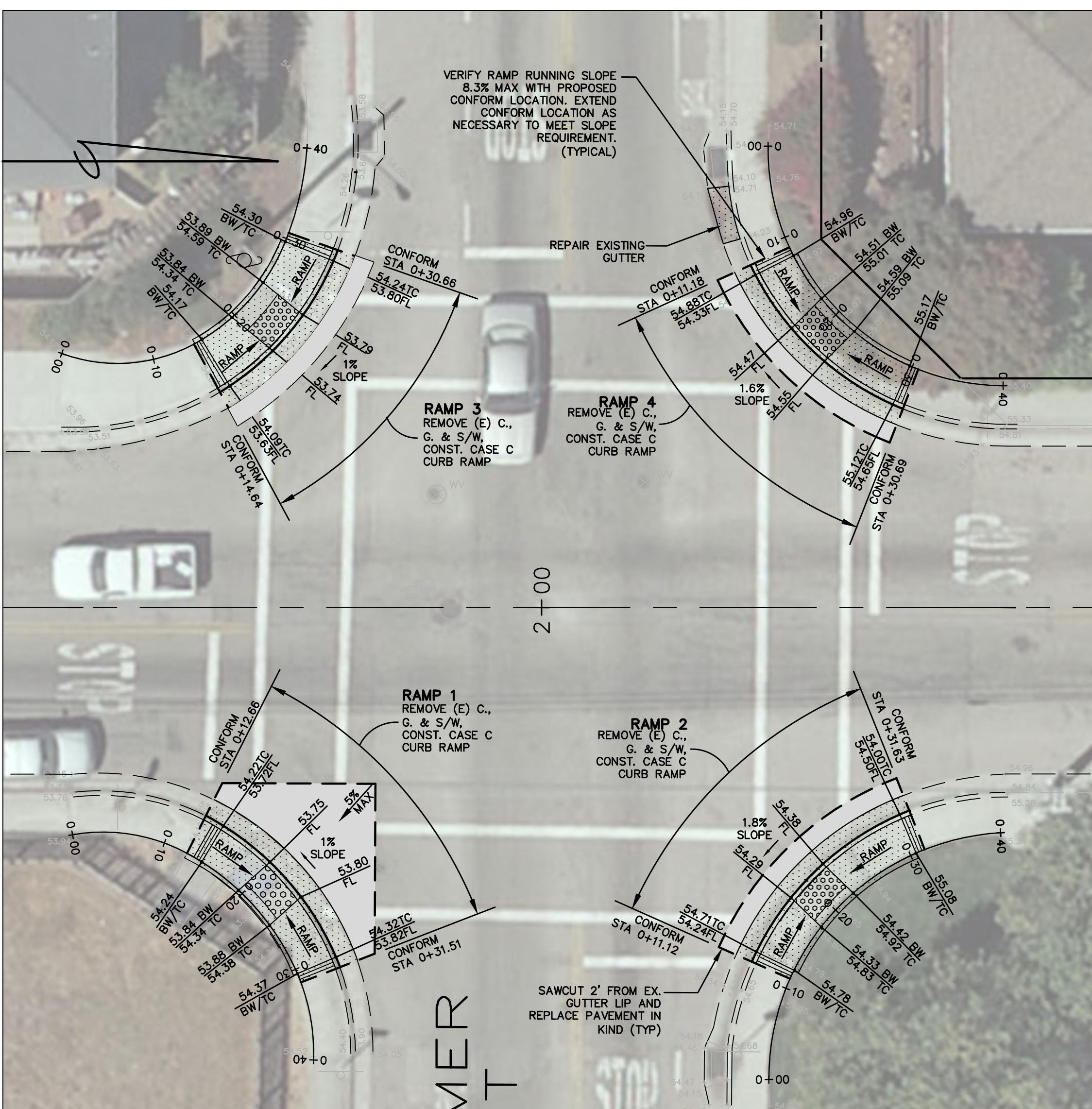
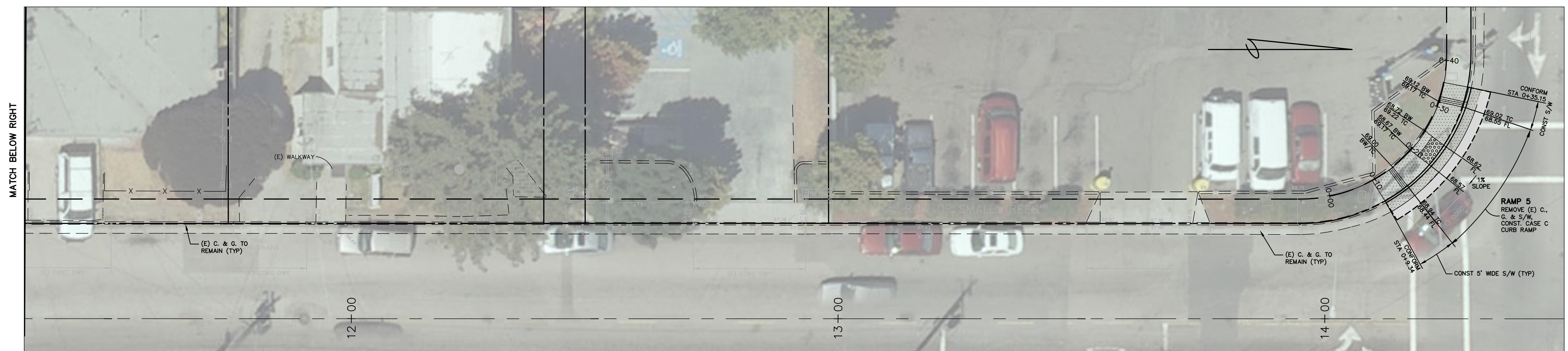
PAVEMENT LEGEND

	NEW AC PAVEMENT SECTION PER DETAIL 1/C2.1
	FULL DEPTH AC PAVEMENT REPAIR, SEE NOTE 3.
	NEW CONCRETE SIDEWALK, CURB, GUTTER, & DRIVEWAY.
	2" DEEP COLD MILL AREA

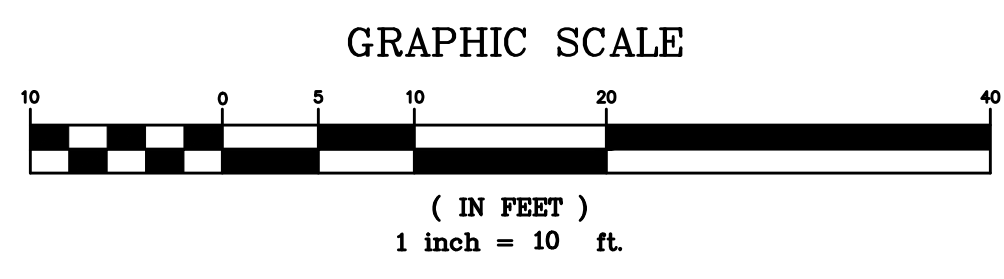


DISCLAIMER
THE DATA SET FORTH ON THIS SHEET IS THE PROPERTY OF BOWMAN & WILLIAMS CONSULTING CIVIL ENGINEERS. IT IS AN INSTRUMENT OF SERVICE AND MAY NOT BE REPRODUCED, ALTERED, OR USED WITHOUT THE CONSENT OF THE ENGINEER. THE PROPER ELECTRONIC TRANSFER OF DATA SHALL BE THE USER'S RESPONSIBILITY WITHOUT LIABILITY TO THE ENGINEER. UNAUTHORIZED USE IS PROHIBITED.

BOWMAN & WILLIAMS CONSULTING CIVIL ENGINEERS 1011 CEDAR STREET SANTA CRUZ, CA 95060 (831) 426-3560		ROAD RECONSTRUCTION PLAN 38TH AVENUE ROAD RECONSTRUCTION PROJECT CAPITOLA, CALIFORNIA	
REGISTERED CIVIL ENGINEER NO. 53588		JOB NO. 26270	
SCALE 1" = 20'	DRAWN KAB	INDEX RODEO 2D	SHEET C2.0
DATE JANUARY 5, 2016	CHECKED JFR	FILE NO. 26270	
DESIGN TPC/JFR	DWG NAME 26270_C2.0		



1
C2.1 AC PAVEMENT SECTION
SCALE: 3/4"=1'-0"



NOTES
1. FOR CASE C CURB RAMP, SEE SHEET C3.0

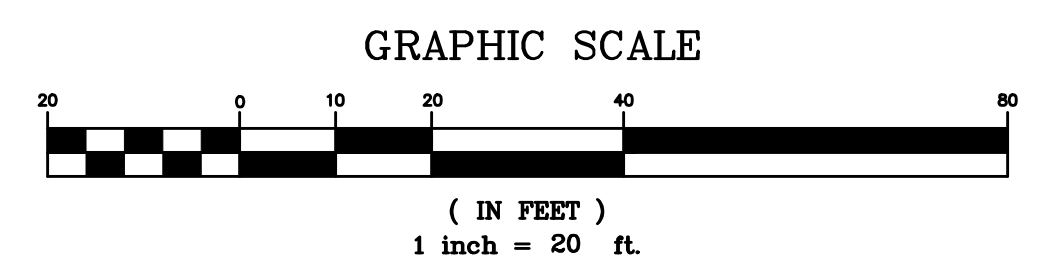
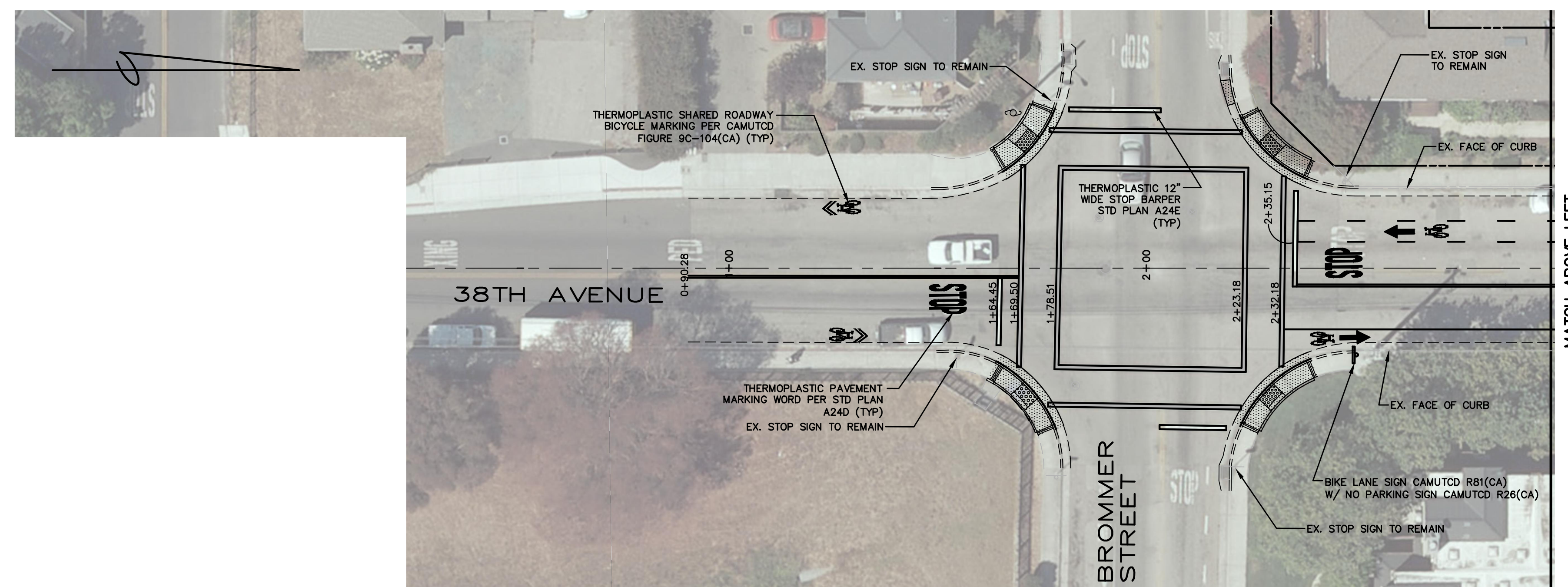
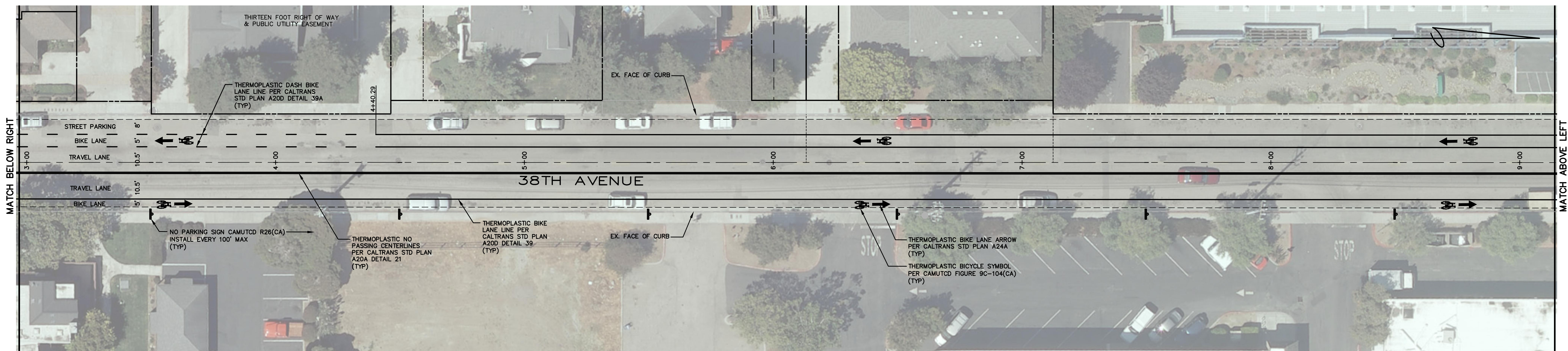
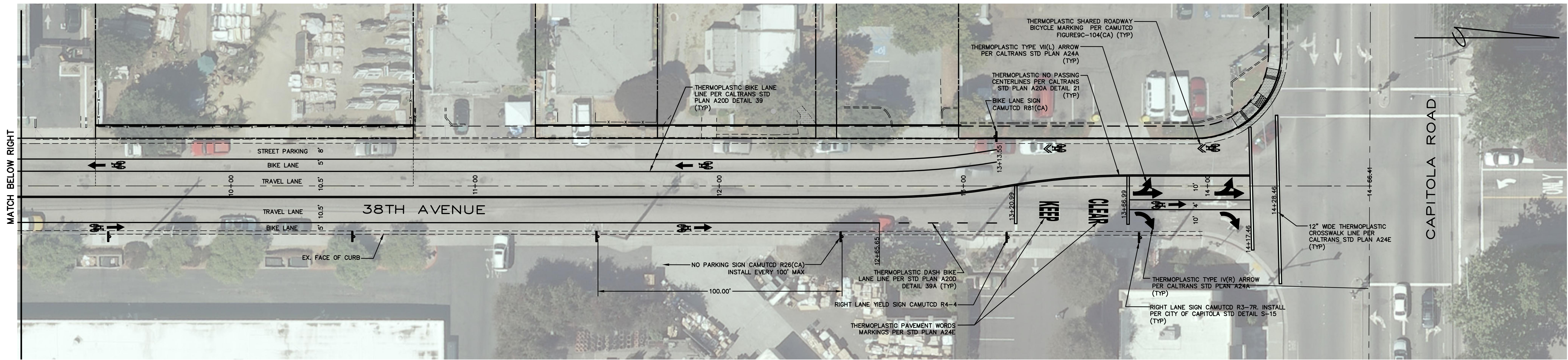


DISCLAIMER
THE DATA SET FORTH ON THIS SHEET IS THE PROPERTY OF BOWMAN & WILLIAMS CONSULTING CIVIL ENGINEERS. IT IS AN INSTRUMENT OF SERVICE AND MAY NOT BE REPRODUCED, ALTERED, OR USED WITHOUT THE CONSENT OF THE ENGINEER. THE PROPER ELECTRONIC TRANSFER OF DATA SHALL BE THE USER'S RESPONSIBILITY WITHOUT LIABILITY TO THE ENGINEER. UNAUTHORIZED USE IS PROHIBITED.

BOWMAN & WILLIAMS CONSULTING CIVIL ENGINEERS 1011 CEDAR STREET SANTA CRUZ, CA 95060 (831) 426-3560		SIDEWALK IMPROVEMENT PLAN 38TH AVENUE ROAD RECONSTRUCTION PROJECT CAPITOLA, CALIFORNIA	
REGISTERED CIVIL ENGINEER No. 53588 SCALE 1" = 10' DATE JANUARY 5, 2016 DESIGN TPC/JFR		JOB NO. 26270 INDEX RODEO 2D FILE NO. 26270	
DRAWN KAB CHECKED JFR		SHEET C2.1	

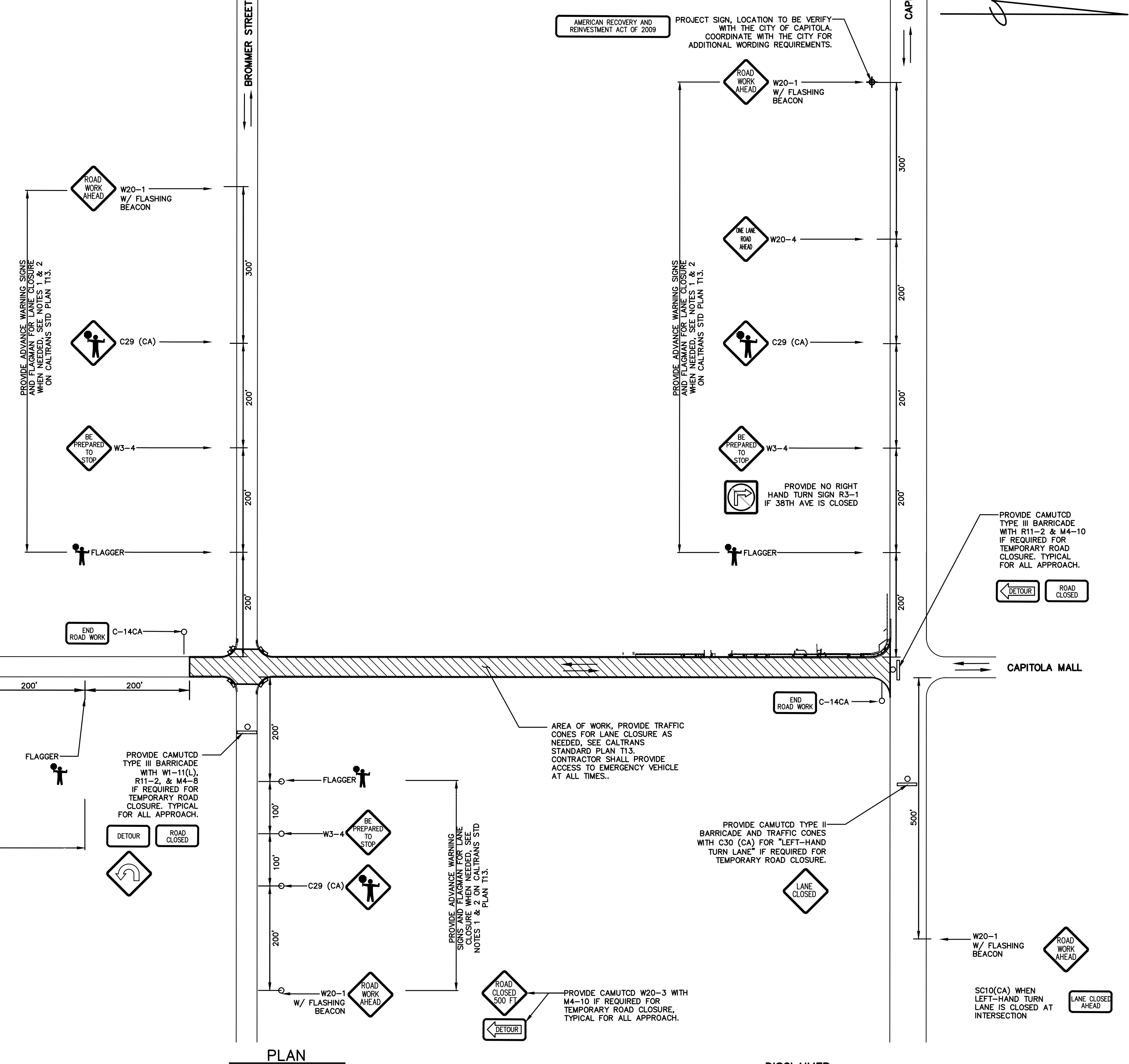
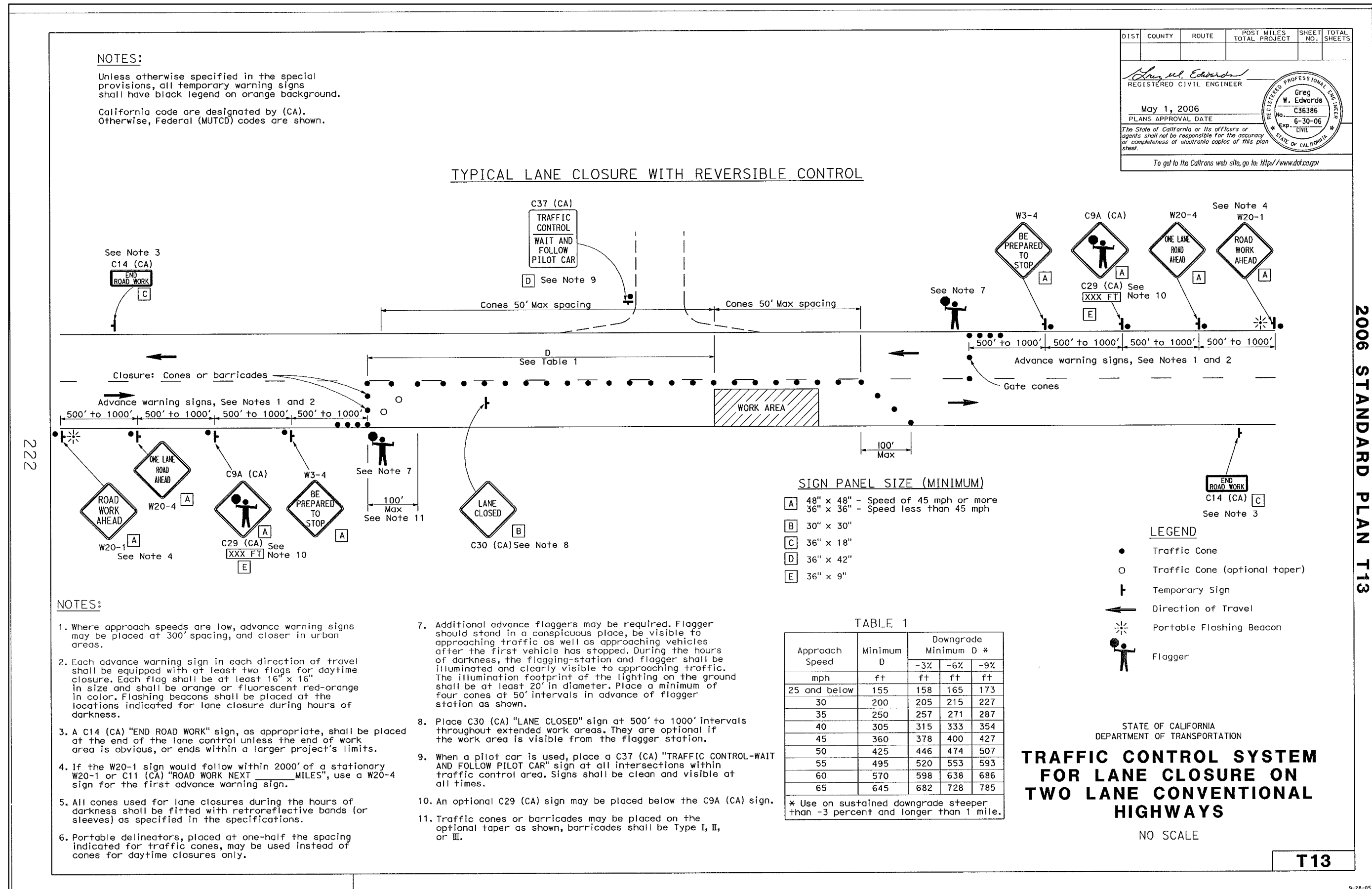
J:\B&W\26270\26270-1-18b.dwg, 1/5/2016 8:16:20 AM, DWG To PDF.pc3

J:\38th\26270\26270-1-18th Ave CapitolA.dwg 1/5/2016 8:17:23 AM DWG To PDF.pc3



DISCLAIMER
 THE DATA SET FORTH ON THIS SHEET IS THE PROPERTY OF BOWMAN & WILLIAMS CONSULTING CIVIL ENGINEERS. IT IS AN INSTRUMENT OF SERVICE AND MAY NOT BE REPRODUCED, ALTERED, OR USED WITHOUT THE CONSENT OF THE ENGINEER. THE PROPER ELECTRONIC TRANSFER OF DATA SHALL BE THE USER'S RESPONSIBILITY WITHOUT LIABILITY TO THE ENGINEER. UNAUTHORIZED USE IS PROHIBITED.

BOWMAN & WILLIAMS CONSULTING CIVIL ENGINEERS 1011 CEDAR STREET SANTA CRUZ, CA 95060 (831) 426-3560		STRIPING PLAN 38TH AVENUE ROAD RECONSTRUCTION PROJECT CAPITOLA, CALIFORNIA	
REGISTERED CIVIL ENGINEER NO. 53588			
SCALE 1" = 20' DATE JANUARY 5, 2016 DESIGN	DRAWN DLN CHECKED JFR DWG NAME 26270_C2.0	JOB NO. 26270 INDEX RODEO 2D FILE NO. 26270	SHEET C2.2



DISCLAIMER
 THE DATA SET FORTH ON THIS SHEET IS THE PROPERTY OF BOWMAN & WILLIAMS CONSULTING CIVIL ENGINEERS. IT IS AN INSTRUMENT OF SERVICE AND MAY NOT BE REPRODUCED, ALTERED, OR USED WITHOUT THE CONSENT OF THE ENGINEER. THE PROPER ELECTRONIC TRANSFER OF DATA SHALL BE THE USER'S RESPONSIBILITY WITHOUT LIABILITY TO THE ENGINEER. UNAUTHORIZED USE IS PROHIBITED.

APN: [REDACTED]

BOWMAN & WILLIAMS
 CONSULTING CIVIL ENGINEERS
 1011 CEDAR STREET
 SANTA CRUZ, CA 95060
 (831) 428-3560

TRAFFIC CONTROL PLAN

38TH AVENUE
 ROAD RECONSTRUCTION PROJECT
 CAPITOLA, CALIFORNIA

REGISTERED CIVIL ENGINEER No. 53588

SCALE AS SHOWN	DRAWN TPC	JOB NO. 26270	SHEET
DATE JANUARY 5, 2016	CHECKED JFR	INDEX RODEO 2D	C2.3
DESIGN JFR/TPC	DWG NAME 26270_C2.3	FILE NO. 26270	

A:\B&W\26270\26270-1-38th_Ave_Capitolola\DWG\C2.3.dwg, 1/5/2016 8:16:57 AM, DWG, 16 PLOT, PLOT

113

2006 REVISED STANDARD PLAN RSP A87A

CURB QUANTITIES

TYPE	CUBIC YARDS PER LINEAR FOOT
A1-6	0.02585
A1-8	0.03084
A2-6	0.05903
A2-8	0.06379
A3-6	0.10136
A3-8	0.14335
B1-4	0.02185
B1-6	0.02930
B2-4	0.05515
B2-6	0.05171
B3-4	0.00641
B3-6	0.01074
B4	0.05709
D-4	0.04083
D-6	0.06804
E	0.06661

TABLE A

CURB TYPE	"H1"	"H2"	"W1"	"W2"
A1-6	1'-2"	6"	7 1/2"	1 1/2"
A1-8	1'-4"	8"	8"	2"
A2-6	1'-0"	6"	2'-7 1/4"	1 1/2"
A2-8	1'-2"	8"	2'-8"	2"
A3-6	6"	5"	7 1/4"	1 1/4"
A3-8	8"	7"	7 3/4"	1 3/4"
B1-4	1'-0"	4"	7 1/2"	2 1/2"
B1-6	1'-2"	6"	9"	4"
B2-4	1'-0"	4"	2'-7 1/4"	2 1/2"
B2-6	1'-2"	6"	2'-9"	4"
B3-4	4"	3"	7"	2"
B3-6	6"	5"	8 1/4"	3 1/2"
D-4	1'-0"	4"	1'-6"	1'-1"
D-6	1'-0"	6"	2'-2"	1'-8"

NOTES:

- Case A driveway section typically applies.
- Use Case B driveway section when ramp slopes would exceed 10% in Case A.
- Use Case B driveway section when sidewalk cross slope would exceed 2% in Case A.
- X=3'-0" except for curb heights over 10" where 4:1 slopes shall be used on curb slope.
- X is a variable when sidewalk is located where wheelchairs may traverse the surface. Slopes shall not exceed 8.33%.
- Sidewalk and ramp thickness "T" at driveway shall be 4" for residential and 6" for commercial.
- Difference in slope of the driveway ramp and the slope of a line between the gutter and a point on the roadway 5'-0" from gutter line shall not exceed 15%. Reduce driveway ramp slope, not gutter slope, where required.
- Minimum width of clear passageway for sidewalk shall be 4'-0".
- Retaining curbs and acquisition of construction easement may be necessary for narrow sidewalks or curb heights in excess of 6".
- Across the pedestrian route at curb ramp locations, the gutter pan slope shall not exceed 1" of depth for each 2'-0" of width.

STATE OF CALIFORNIA
DEPARTMENT OF TRANSPORTATION
CURBS AND DRIVEWAYS
NO SCALE

RSP A87A DATED NOVEMBER 17, 2006 SUPERSEDES STANDARD PLAN A87A DATED MAY 11, 2006 - PAGE 113 OF THE STANDARD PLANS BOOK DATED MAY 2006.
REVISED STANDARD PLAN RSP A87A

115

2006 REVISED STANDARD PLAN RSP A88A

RAISED TRUNCATED DOME

NOTES:

- As site conditions dictate, Case A through Case G curb ramps may be used for corner installations similar to those shown in Detail A and Detail B. The case of curb ramps used in Detail A do not have to be the same. Case A through Case G curb ramps also may be used at mid block locations, as site conditions dictate.
- If distance from curb to back of sidewalk is too short to accommodate ramp and 4'-0" platform (landing) as shown in Case A, the sidewalk may be depressed longitudinally as in Case B, or C or may be widened as in Case D.
- When ramp is located in center of curb return, crosswalk configuration must be similar to that shown for Detail B.
- As site conditions dictate, the retaining curb side and the flared side of the Case G ramp shall be constructed in reversed position.
- If located on a curve, the sides of the ramp need not be parallel, but the minimum width of the ramp shall be 4'-0".
- Side slope of ramp flares vary uniformly from a maximum of 10% at curb to conform with longitudinal sidewalk slope adjacent to top of the ramp, except in Case C and Case F.
- The curb ramp shall be outlined, as shown, with a 1'-0" wide border with 1/2" grooves approximately 3/4" on center. See grooving detail.
- Transitions from ramps and landings to walks, gutters or streets shall be flush and free of abrupt changes.
- Maximum slopes of adjoining gutters, the road surface immediately adjacent to the curb ramp or accessible route shall not exceed 5 percent within 4'-0" of the top and bottom of the curb ramp.
- Curb ramps shall have a detectable warning surface that extends the full width and 4'-0" depth of the ramp. Detectable Warning Surfaces shall conform to the details on this plan and the requirements in the Special Provisions.
- The edge of the detectable warning surface nearest the street shall be between 6" and 8" from the gutter flowline.
- Sidewalk and ramp thickness, "T", shall be 3/2" minimum.
- Utility pull boxes, manholes, vaults and all other utility facilities within the boundaries of the curb ramp will be relocated or adjusted to grade by the owner prior to, or in conjunction with, curb ramp construction.
- For retrofit conditions, removal and replacement of curb apron will be at the contractor's option, unless otherwise shown on project plans.

STATE OF CALIFORNIA
DEPARTMENT OF TRANSPORTATION
CURB RAMP DETAILS
NO SCALE

RSP A88A DATED SEPTEMBER 1, 2006 SUPERSEDES STANDARD PLAN A88A DATED MAY 11, 2006 - PAGE 115 OF THE STANDARD PLANS BOOK DATED MAY 2006.
REVISED STANDARD PLAN RSP A88A

2006 REVISED STANDARD PLAN RSP A87A

2006 REVISED STANDARD PLAN RSP A88A

2006 REVISED STANDARD PLAN RSP A87A

STORM DRAIN PROTECTION

NOTES:

- ALL WORK AND MATERIAL SHALL CONFORM TO THE CITY OF CAPITOLA STANDARD SPECIFICATIONS FOR PUBLIC IMPROVEMENTS.
- CONCRETE SHALL BE SIX SACK MIX, CLASS A WITH 2,500 PSI IN 28-DAY (MINIMUM).
- COMPACT SUBBASE SOIL AND CLASS II AGGREGATE BASE TO 95% RELATIVE COMPACTION.
- SEE SCORELINE AND EXPANSION JOINTS PER CAP-006.
- ALL CONCRETE CURBS, GUTTERS SIDEWALKS, AND DRIVEWAY APPROACH REMOVALS SHALL BE SAWCUT ON EXISTING SCORELINES. LIMITS OR REMOVAL TO BE DETERMINED BY CITY.
- ALL CONCRETE SURFACES WHICH HAVE BEEN MARKED OR DEFACED WILL NOT BE ACCEPTED.
- IF SIDEWALK IS NOT INSTALLED MONOLITHICALLY, PLACE #4 DOWELS 18" LONG AT 4' O.C. IN BACK OF CURB, 3" DOWN FROM TOP OF CURB AND 4" INTO THE CONCRETE.

STATE OF CALIFORNIA
DEPARTMENT OF TRANSPORTATION
CURB, GUTTER, AND SIDEWALK
NO SCALE

RSP A87A DATED NOVEMBER 17, 2006 SUPERSEDES STANDARD PLAN A87A DATED MAY 11, 2006 - PAGE 113 OF THE STANDARD PLANS BOOK DATED MAY 2006.
REVISED STANDARD PLAN RSP A87A

2006 REVISED STANDARD PLAN RSP A88A

STREET SIGN EMBEDDED ON SIDEWALK

NOTES:

- THE LOCATION OF STREET SIGNS SHALL BE AS SHOWN ON THE PLANS OR AS DIRECTED BY THE ENGINEER.
- ALL STREET SIGNS SHALL BE HIGH INTENSITY, PRISMATIC REFLECTIVE SHEETING WITH 1160A ANTI-GRAFFITI OVERLAY.

STATE OF CALIFORNIA
DEPARTMENT OF TRANSPORTATION
STREET SIGN EMBEDDED ON SIDEWALK
NO SCALE

RSP A88A DATED SEPTEMBER 1, 2006 SUPERSEDES STANDARD PLAN A88A DATED MAY 11, 2006 - PAGE 115 OF THE STANDARD PLANS BOOK DATED MAY 2006.
REVISED STANDARD PLAN RSP A88A

2006 REVISED STANDARD PLAN RSP A87A

STORM DRAIN PROTECTION

NOTES:

- ALL WORK AND MATERIAL SHALL CONFORM TO THE CITY OF CAPITOLA STANDARD SPECIFICATIONS FOR PUBLIC IMPROVEMENTS.
- CONCRETE SHALL BE SIX SACK MIX, CLASS A WITH 2,500 PSI IN 28-DAY (MINIMUM).
- COMPACT SUBBASE SOIL AND CLASS II AGGREGATE BASE TO 95% RELATIVE COMPACTION.
- SEE SCORELINE AND EXPANSION JOINTS PER CAP-006.
- ALL CONCRETE CURBS, GUTTERS SIDEWALKS, AND DRIVEWAY APPROACH REMOVALS SHALL BE SAWCUT ON EXISTING SCORELINES. LIMITS OR REMOVAL TO BE DETERMINED BY CITY.
- ALL CONCRETE SURFACES WHICH HAVE BEEN MARKED OR DEFACED WILL NOT BE ACCEPTED.
- IF SIDEWALK IS NOT INSTALLED MONOLITHICALLY, PLACE #4 DOWELS 18" LONG AT 4' O.C. IN BACK OF CURB, 3" DOWN FROM TOP OF CURB AND 4" INTO THE CONCRETE.

STATE OF CALIFORNIA
DEPARTMENT OF TRANSPORTATION
CURBS AND DRIVEWAYS
NO SCALE

RSP A87A DATED NOVEMBER 17, 2006 SUPERSEDES STANDARD PLAN A87A DATED MAY 11, 2006 - PAGE 113 OF THE STANDARD PLANS BOOK DATED MAY 2006.
REVISED STANDARD PLAN RSP A87A

2006 REVISED STANDARD PLAN RSP A88A

STREET SIGN EMBEDDED ON SIDEWALK

NOTES:

- THE LOCATION OF STREET SIGNS SHALL BE AS SHOWN ON THE PLANS OR AS DIRECTED BY THE ENGINEER.
- ALL STREET SIGNS SHALL BE HIGH INTENSITY, PRISMATIC REFLECTIVE SHEETING WITH 1160A ANTI-GRAFFITI OVERLAY.

STATE OF CALIFORNIA
DEPARTMENT OF TRANSPORTATION
STREET SIGN EMBEDDED ON SIDEWALK
NO SCALE

RSP A88A DATED SEPTEMBER 1, 2006 SUPERSEDES STANDARD PLAN A88A DATED MAY 11, 2006 - PAGE 115 OF THE STANDARD PLANS BOOK DATED MAY 2006.
REVISED STANDARD PLAN RSP A88A

1/5/2016 9:20:13 AM, DWG, T5, P015, P013