



NOLL & TAM ARCHITECTS

Chris Noll
Principal in Charge

Phan Dung
Project Architect

Trina Goodwin
Library Planner & Interiors Architect

Mati Teiblum
Project Manager

MAIN ENTRY



KEY COMMENTS FROM COMMUNITY MEETING #1

SITE:

- CONCERN ABOUT ADEQUATE PARKING
- PEDESTRIAN CONNECTION TO RISPIN & CREEK
- ENTHUSIASTIC ABOUT THE PORCH, DESIRE FOR QUIET OUTDOOR SPACE

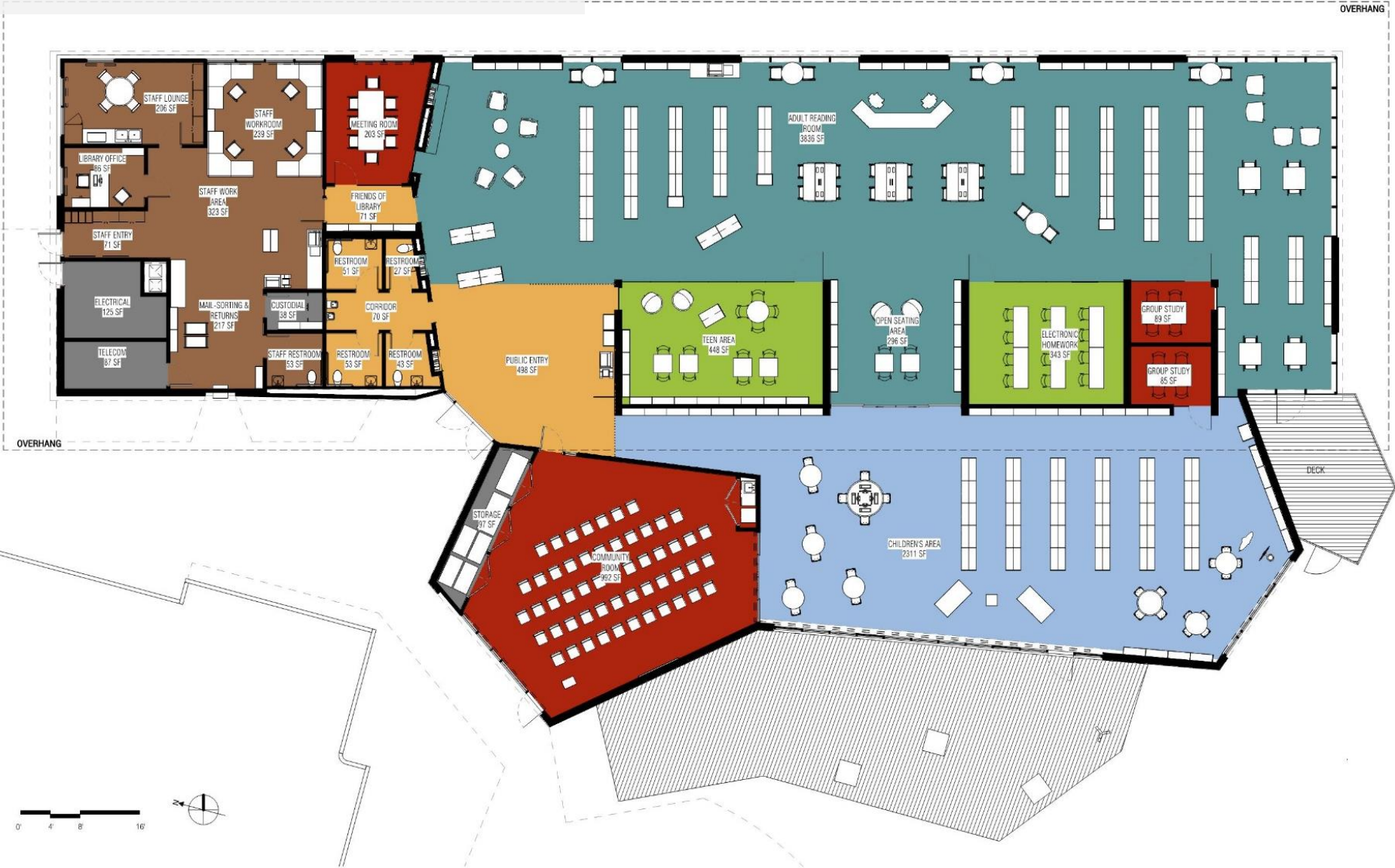
INTERIOR:

- PROVIDE FLEXIBLE SPACES
- PROVIDE DIGITAL ACCESS FOR ALL AGES
- BE MINDFUL OF ACOUSTICS

EXTERIOR:

- PRIMARILY POSITIVE RESPONSE TO ALL DESIGNS
- MAKE SURE TO DESIGN A BUILDING UNIQUE TO CAPITOLA
- CONSIDER REFERENCES TO LOCAL FOSSILS
- SPECIFY DURABLE MATERIALS
- CONSIDER SUSTAINABILITY AND NET ZERO DESIGN

FLOOR PLAN



LANDSCAPE DESIGN



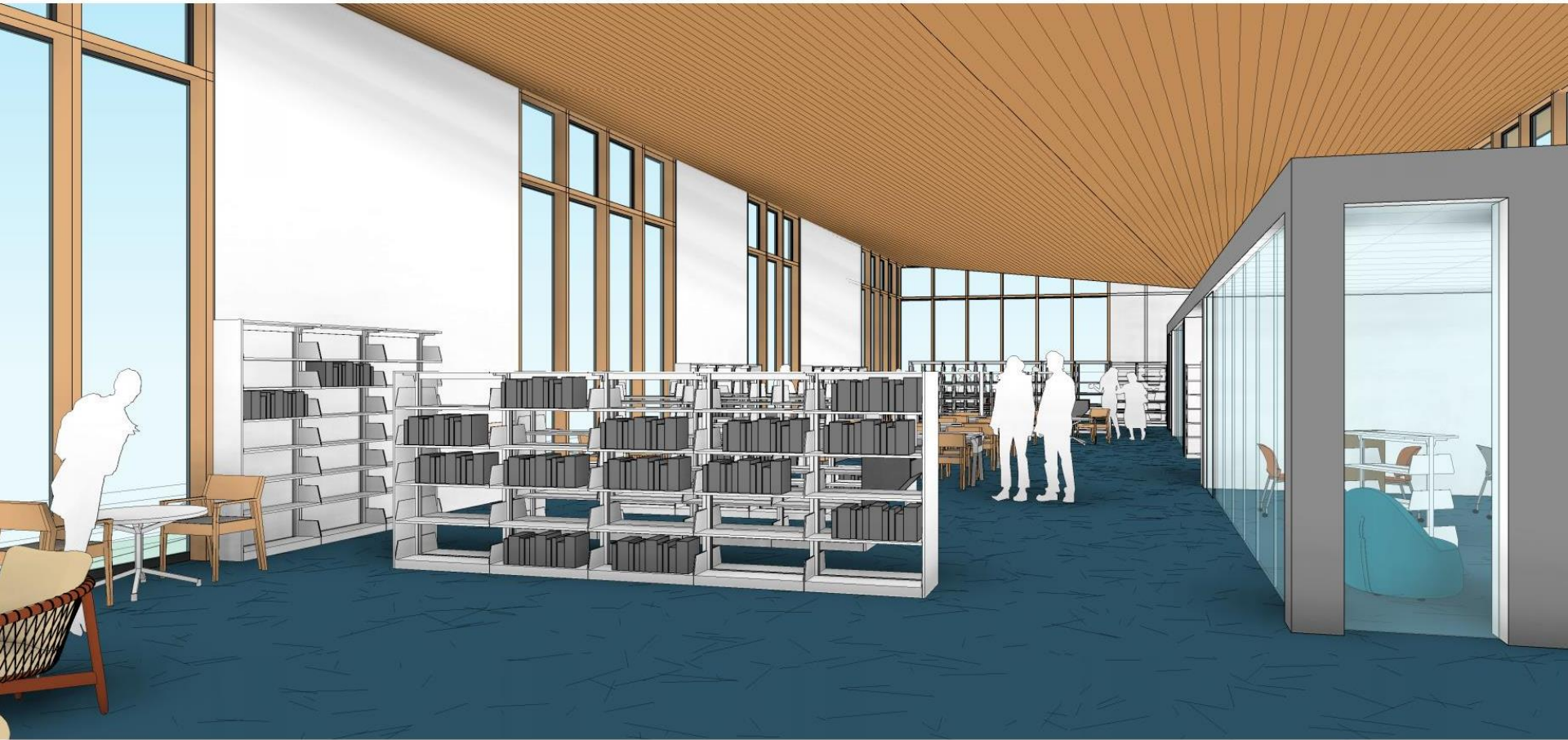
ENTRY AND ENTRANCE TO COMMUNITY ROOM



ENTRY AND FIREPLACE



FROM ENTRY TO READING ROOM



FIREPLACE AND SEATING AREA



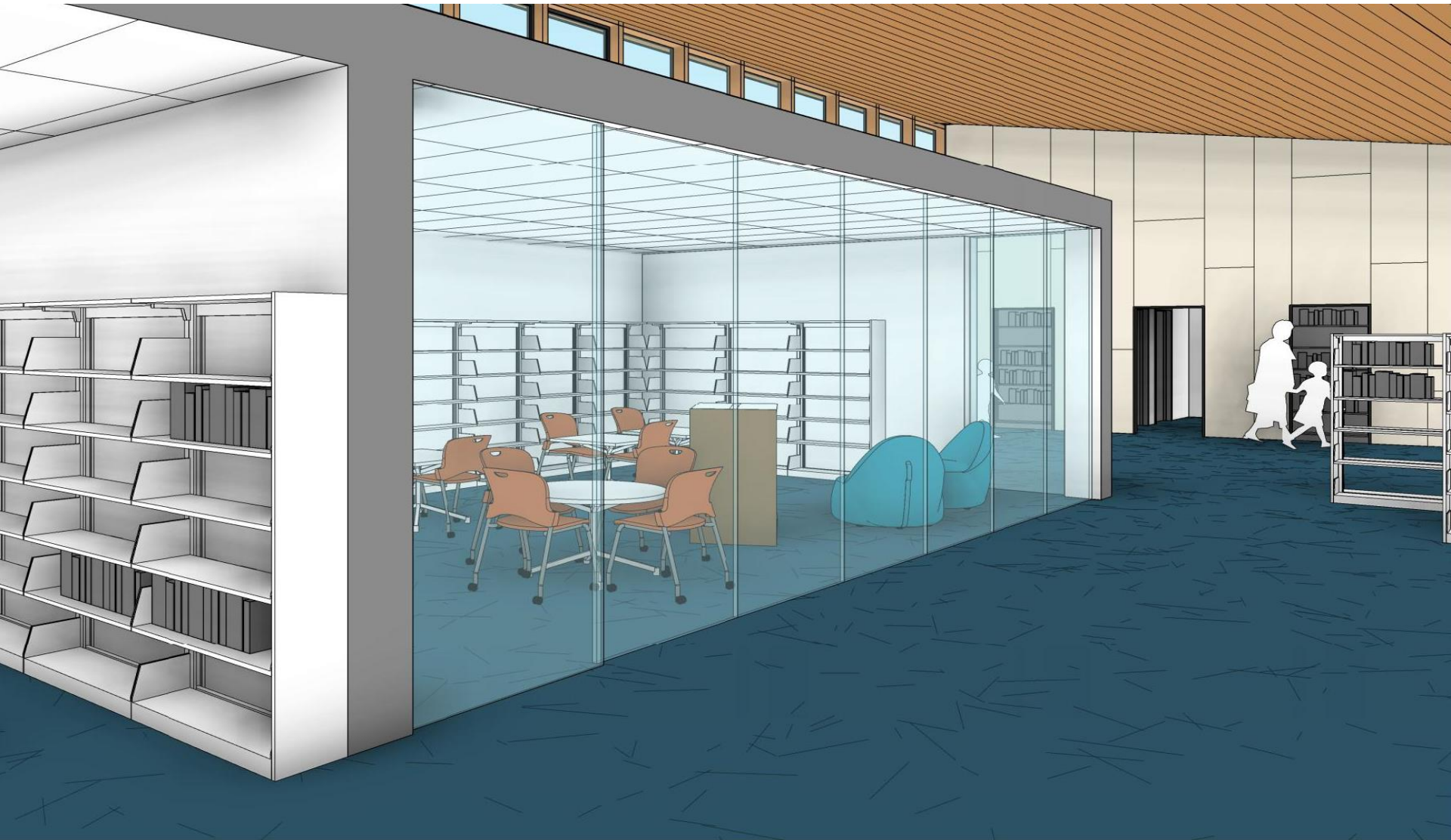
PUBLIC ENTRY FROM SERVICE DESK



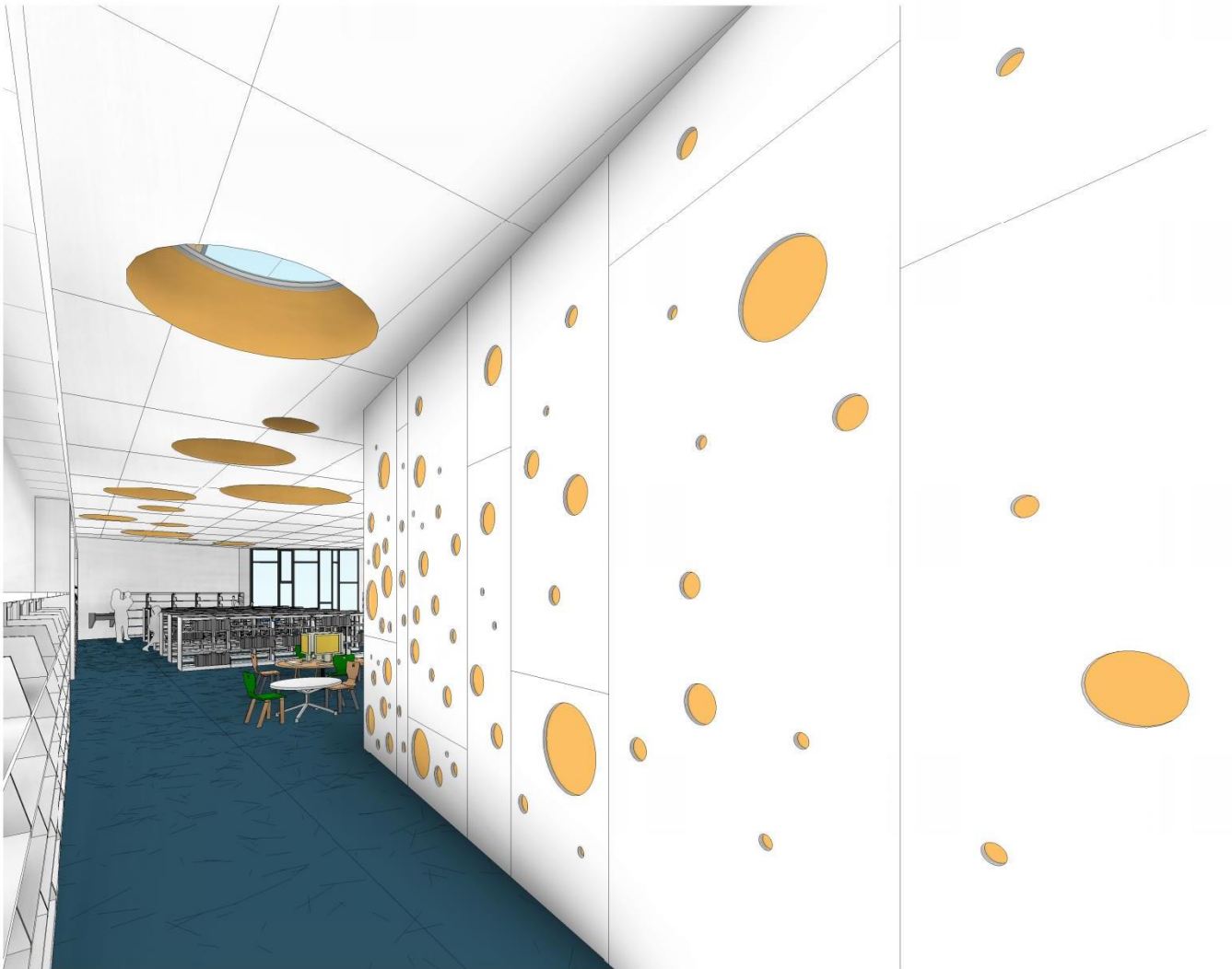
SERVICE DESK TO TEEN AREA



TEEN ROOM



ENTRY TO CHILDREN'S AREA



CHILDREN'S AREA



CHILDREN'S AREA – SHIP'S PROW



COMMUNITY ROOM AND PORCH



VIEW FROM CLARES STREET



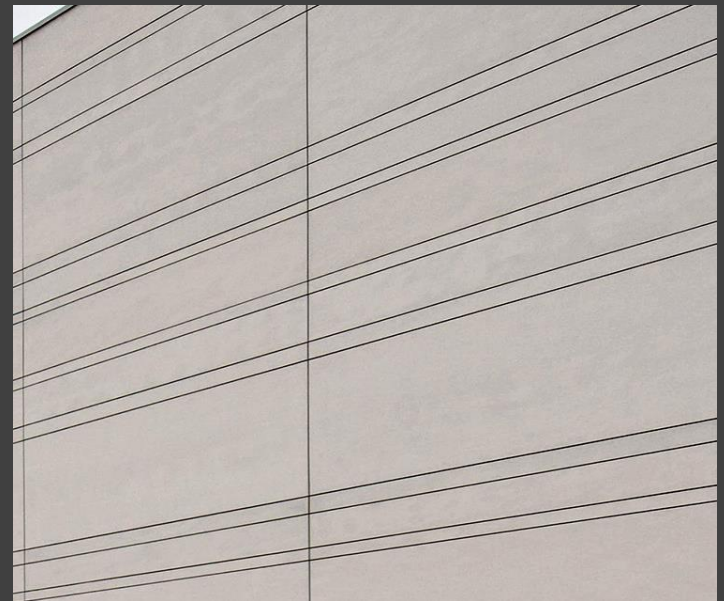
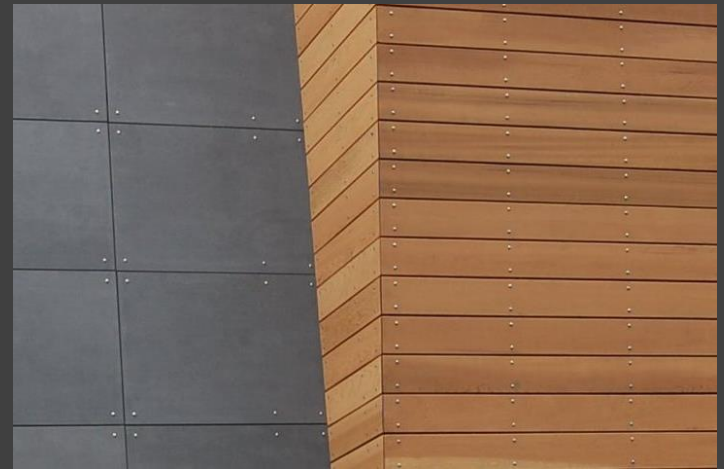
FROM CLARES & WHARF ROAD/DAY



FROM CLARES & WHARF ROAD/NIGHT



EXTERIOR MATERIALS: MASONRY, WOOD, METAL



EXTERIOR MATERIALS: MASONRY, WOOD, METAL

